



**GENESEE
COMMERCIAL
GROUP, LLC**

FOR LEASE

OFFICE

3064 WHITMAN DRIVE Evergreen, Colorado 80439

PROPERTY FEATURES

- Newer building/modern architecture
- Great north Evergreen location
- Sitting on a hillside with trees
- Local Property Management



PROPERTY SPECIFICATIONS

Available:	Suite 150	1,320 RSF
Lease Rate:		\$21.00/RSF FSG
Availability:		Immediate
Building Size:		6,922 SF
Built:		2001

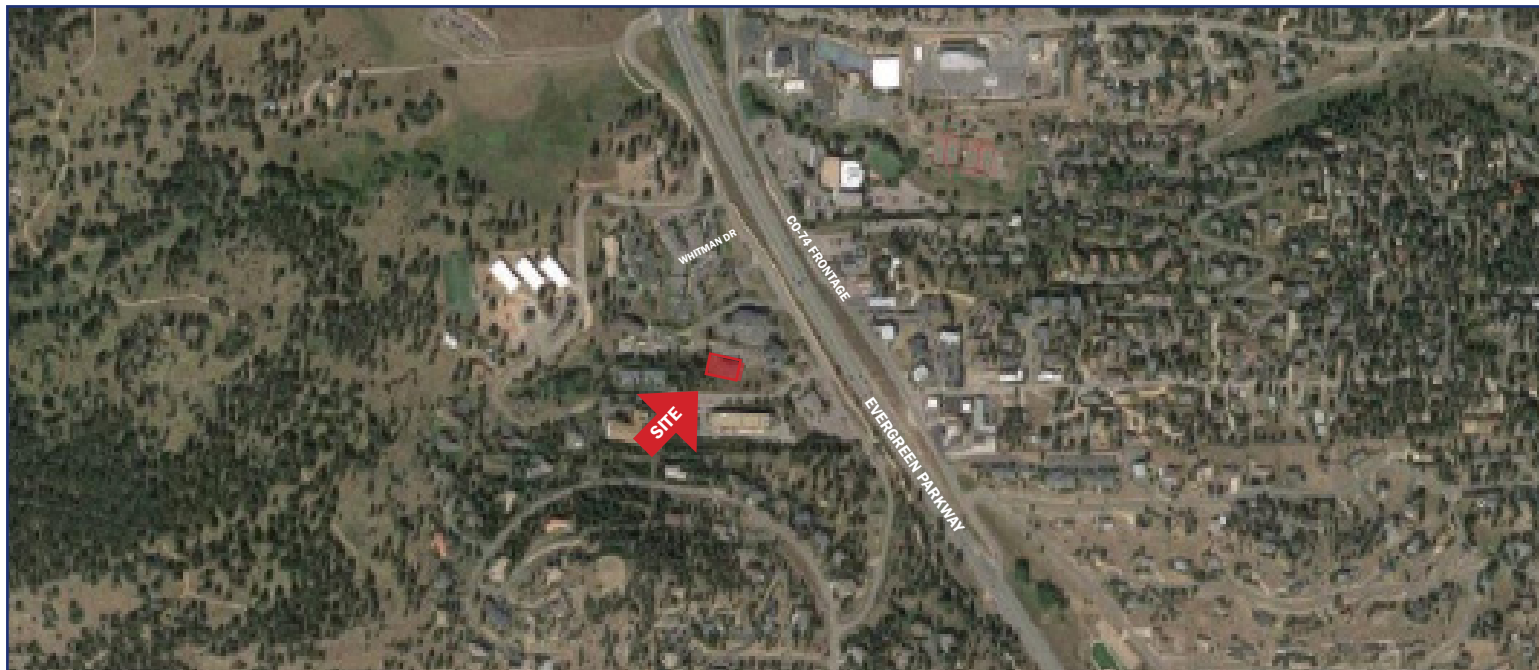
FOR MORE INFORMATION CONTACT:

RENÉE SPICER

rspicer@gcgcre.com | 720.476.5226

JAMIE MACBETH

jmacbeth@gcgcre.com | 720.476.5229



FOR MORE INFORMATION CONTACT:

RENÉE SPICER

rspicer@gcgcre.com | 720.476.5226

JAMIE MACBETH

jmacbeth@gcgcre.com | 720.476.5229

GENESEE COMMERCIAL GROUP, LLC | 710 KIPLING STREET, SUITE 403 | LAKEWOOD, COLORADO 80215 | WWW.GCGCRE.COM