



Keegan & Coppin
COMPANY, INC.

FOR LEASE

4255 SANTA ROSA AVE.
SANTA ROSA, CA

OFFICE WITH
LARGE YARD



Go beyond broker.

PRESENTED BY

JAMES NOBLES, AGENT
LIC # 01988349 (707) 528-1400 EXT. 247
JNOBLES@KEEGANCOPPIN.COM

SANTA ROSA AVENUE



PROPERTY INFORMATION



4255 SANTA ROSA AVE.
SANTA ROSA, CA

**OFFICE WITH
LARGE YARD**

HIGHLIGHTS

- 2,400+/- sq ft Office + 600+/- SF Shop Space
- 52,000+/- SF Yard
- M-1 Zoning
- Easy Access to Hwy 101
- Office area recently remodeled
- Highway 101 & Santa Rosa Ave. Frontage
- Rocked yard area

DETAILS

OFFICE SPACE

2,400+/- sq ft Office
600+/- Shop
52,000+/- sq ft Excess Yard

PARKING

Ample On-Site

DESCRIPTION OF PREMISES

Hard to find office, shop and yard located off Santa Rosa Avenue in southern Santa Rosa. Easy Access to Highway 101 North & South. Near commercial truck gas station.

LEASE TERMS

RATE

\$10,000/Month

TERMS

3 - 5 Years



PRESENTED BY:

JAMES NOBLES, AGENT
KEEGAN & COPPIN CO., INC.
 LIC # 01988349 (707) 528-1400 EXT. 247
 JNOBLES@KEEGANCOPPIN.COM

Keegan & Coppin Company, Inc.

The above information, while not guaranteed, has been secured from sources we believe to be reliable. Submitted subject to error, change or withdrawal. An interested party should verify the status of the property and the information herein.



PROPERTY PHOTOS



4255 SANTA ROSA AVE.
SANTA ROSA, CA

**OFFICE WITH
LARGE YARD**



PRESENTED BY:

**JAMES NOBLES, AGENT
KEEGAN & COPPIN CO., INC.
LIC # 01988349 (707) 528-1400 EXT. 247
JNOBLES@KEEGANCOPPIN.COM**

Keegan & Coppin Company, Inc.

The above information, while not guaranteed, has been secured from sources we believe to be reliable. Submitted subject to error, change or withdrawal. An interested party should verify the status of the property and the information herein.



PROPERTY PHOTOS



4255 SANTA ROSA AVE.
SANTA ROSA, CA

**OFFICE WITH
LARGE YARD**



PRESENTED BY:

**JAMES NOBLES, AGENT
KEEGAN & COPPIN CO., INC.
LIC # 01988349 (707) 528-1400 EXT. 247
JNOBLES@KEEGANCOPPIN.COM**

Keegan & Coppin Company, Inc.

The above information, while not guaranteed, has been secured from sources we believe to be reliable. Submitted subject to error, change or withdrawal. An interested party should verify the status of the property and the information herein.



PROPERTY PHOTOS



4255 SANTA ROSA AVE.
SANTA ROSA, CA

**OFFICE WITH
LARGE YARD**



PRESENTED BY: **JAMES NOBLES, AGENT**
KEEGAN & COPPIN CO., INC.
LIC # 01988349 (707) 528-1400 EXT. 247
JNOBLES@KEEGANCOPPIN.COM

Keegan & Coppin Company, Inc.

The above information, while not guaranteed, has been secured from sources we believe to be reliable. Submitted subject to error, change or withdrawal. An interested party should verify the status of the property and the information herein.

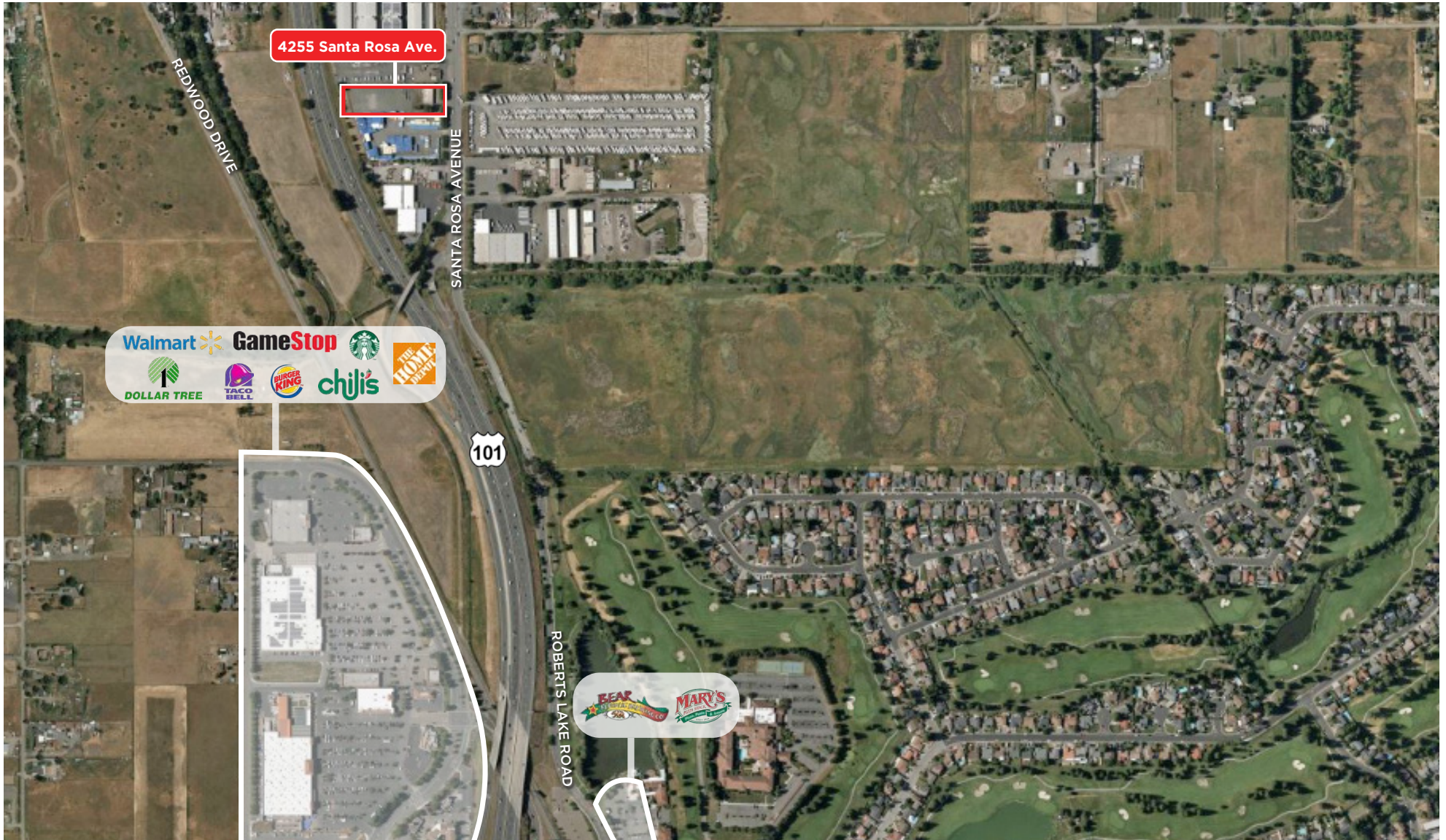


AERIAL MAP



4255 SANTA ROSA AVE.
SANTA ROSA, CA

**OFFICE WITH
LARGE YARD**



Keegan & Coppin Company, Inc.

The above information, while not guaranteed, has been secured from sources we believe to be reliable. Submitted subject to error, change or withdrawal. An interested party should verify the status of the property and the information herein.