

SALE



OFFICE

1915 BROAD RIPPLE AVE



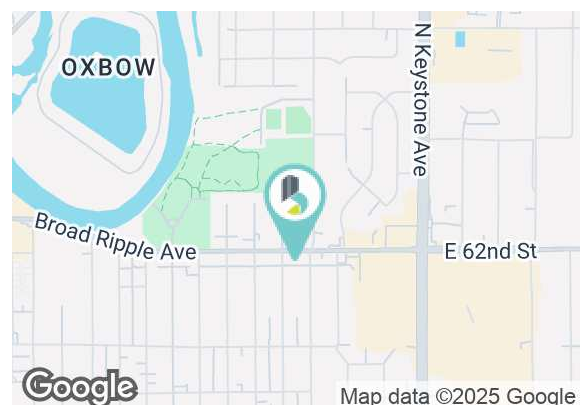
PROPERTY HIGHLIGHTS

- Prime owner/user opportunity in Broad Ripple.
- Excellent visibility along Broad Ripple Avenue with 27,661 vehicles per day.
- Convenient on-site parking.
- Flexible floor plan – can be reconfigured for multiple tenants.

SALE PRICE

\$625,000

Lot Size:	0.20 AC
Building Size:	4,896 SF
Zoning:	D-5



BRADLEY COMPANY NICHOLAS R. MILLER

310 E. 96th St., Suite 100
Indianapolis, IN 46240
317.663.6000

Vice President
317.517.2310
nmiller@bradleyco.com



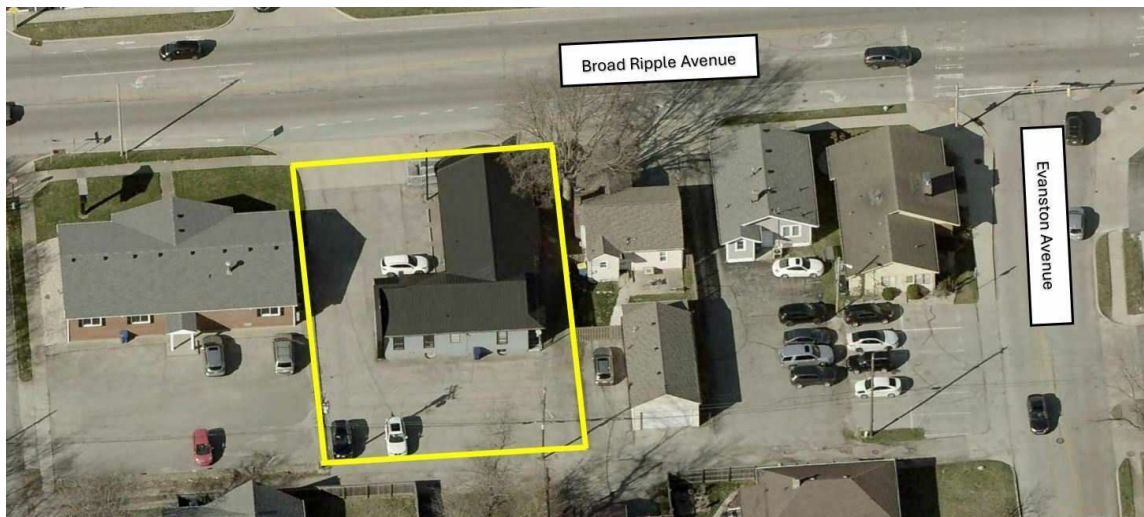
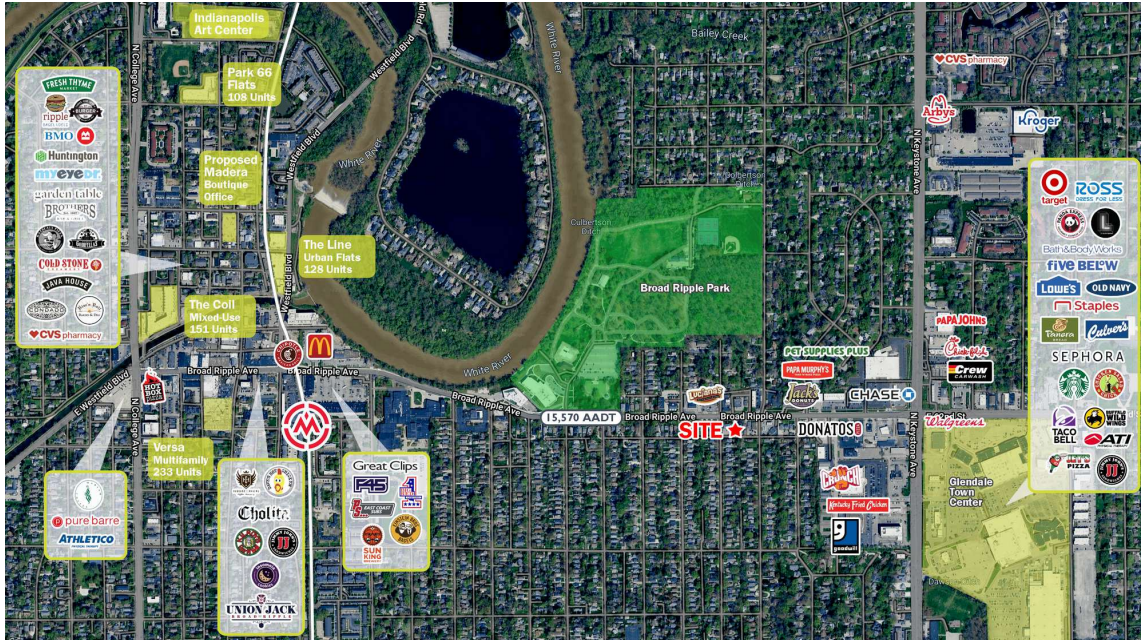
BRADLEYCO.COM



1915 BROAD RIPPLE AVE, INDIANAPOLIS, IN 46220

SALE

OFFICE



NICHOLAS R. MILLER

Vice President

317.517.2310

nmiller@bradleyco.com



INTERIOR PICTURES

1915 BROAD RIPPLE AVE, INDIANAPOLIS, IN 46220

SALE

OFFICE



NICHOLAS R. MILLER

Vice President

317.517.2310

nmiller@bradleyco.com

©2025 Bradley Company, LLC and affiliates. Use of any third party name or mark is for informational purposes only and does not indicate sponsorship or endorsement by such party. Not all information has been independently verified, and the presenting broker makes no guarantee about its accuracy. Any projections, opinions, or estimates are for example only. Before completing a real estate transaction, you and your advisors should conduct an independent investigation of the property to determine its suitability for your needs.



FLOOR PLAN FOR MAIN LEVEL

1915 BROAD RIPPLE AVE, INDIANAPOLIS, IN 46220

SALE

OFFICE



NICHOLAS R. MILLER

Vice President

317.517.2310

nmiller@bradleyco.com

©2025 Bradley Company, LLC and affiliates. Use of any third party name or mark is for informational purposes only and does not indicate sponsorship or endorsement by such party. Not all information has been independently verified, and the presenting broker makes no guarantee about its accuracy. Any projections, opinions, or estimates are for example only. Before completing a real estate transaction, you and your advisors should conduct an independent investigation of the property to determine its suitability for your needs.

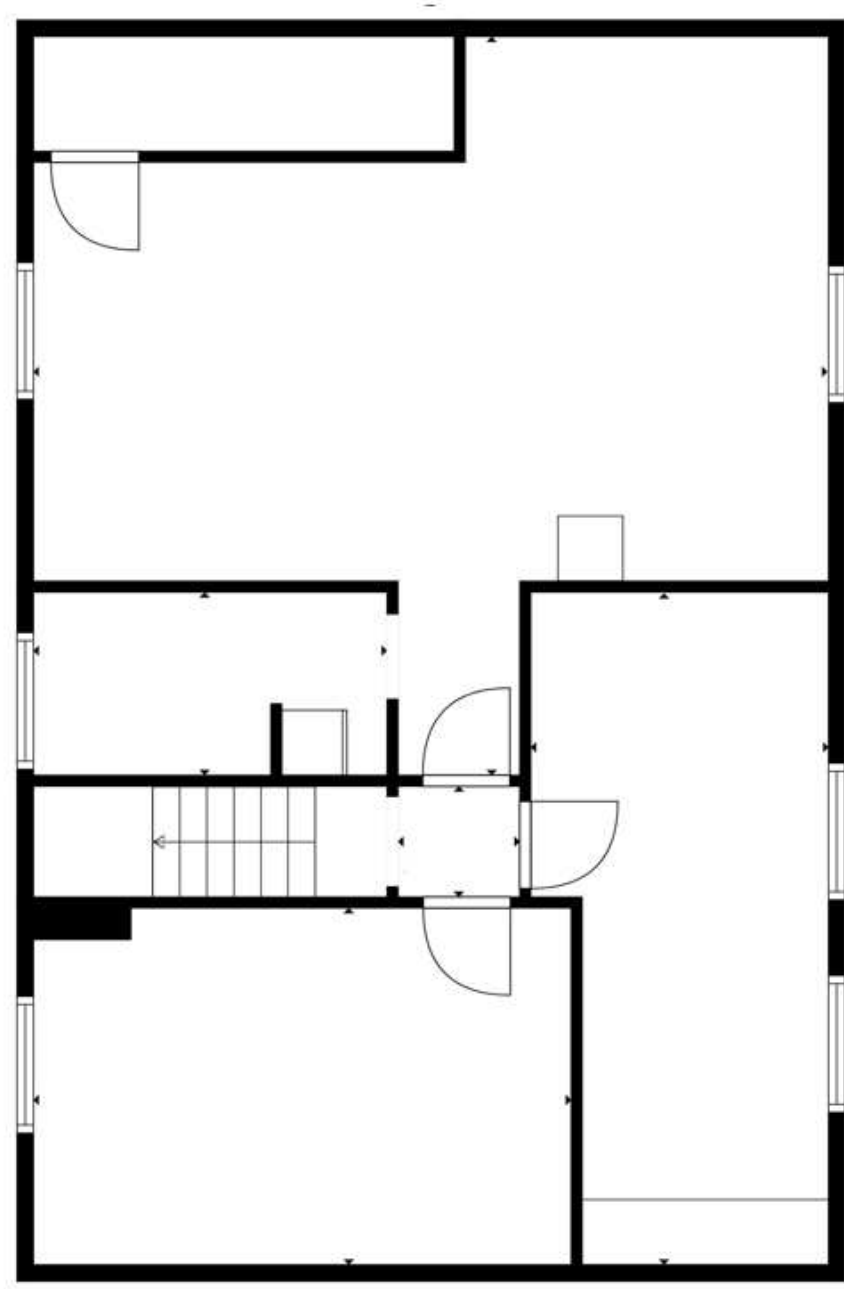


FLOOR PLAN FOR BASEMENT

1915 BROAD RIPPLE AVE, INDIANAPOLIS, IN 46220

SALE

OFFICE



NICHOLAS R. MILLER

Vice President

317.517.2310

nmiller@bradleyco.com

©2025 Bradley Company, LLC and affiliates. Use of any third party name or mark is for informational purposes only and does not indicate sponsorship or endorsement by such party. Not all information has been independently verified, and the presenting broker makes no guarantee about its accuracy. Any projections, opinions, or estimates are for example only. Before completing a real estate transaction, you and your advisors should conduct an independent investigation of the property to determine its suitability for your needs.