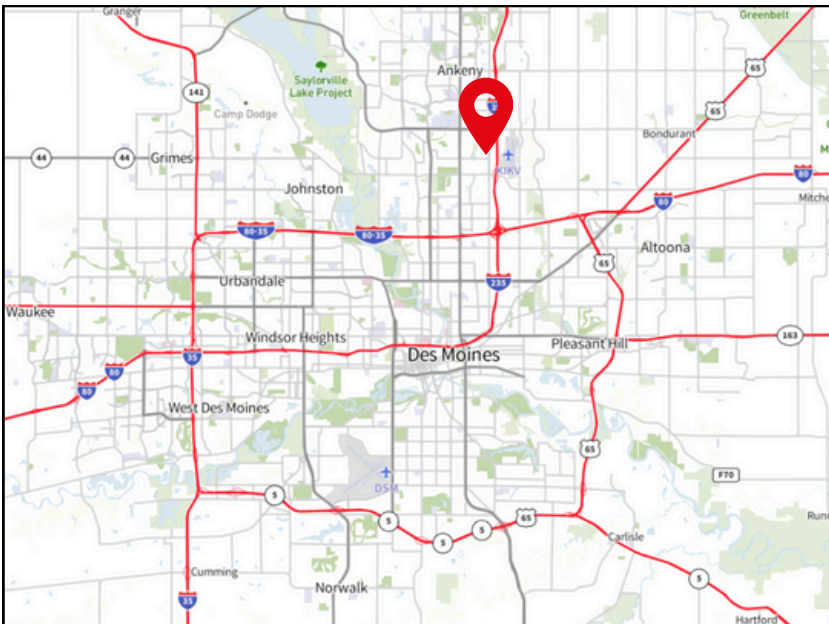




111,125 SF
Industrial facility

For sublease

4602 SE Delaware Avenue | Ankeny, Iowa 50021



Availability overview

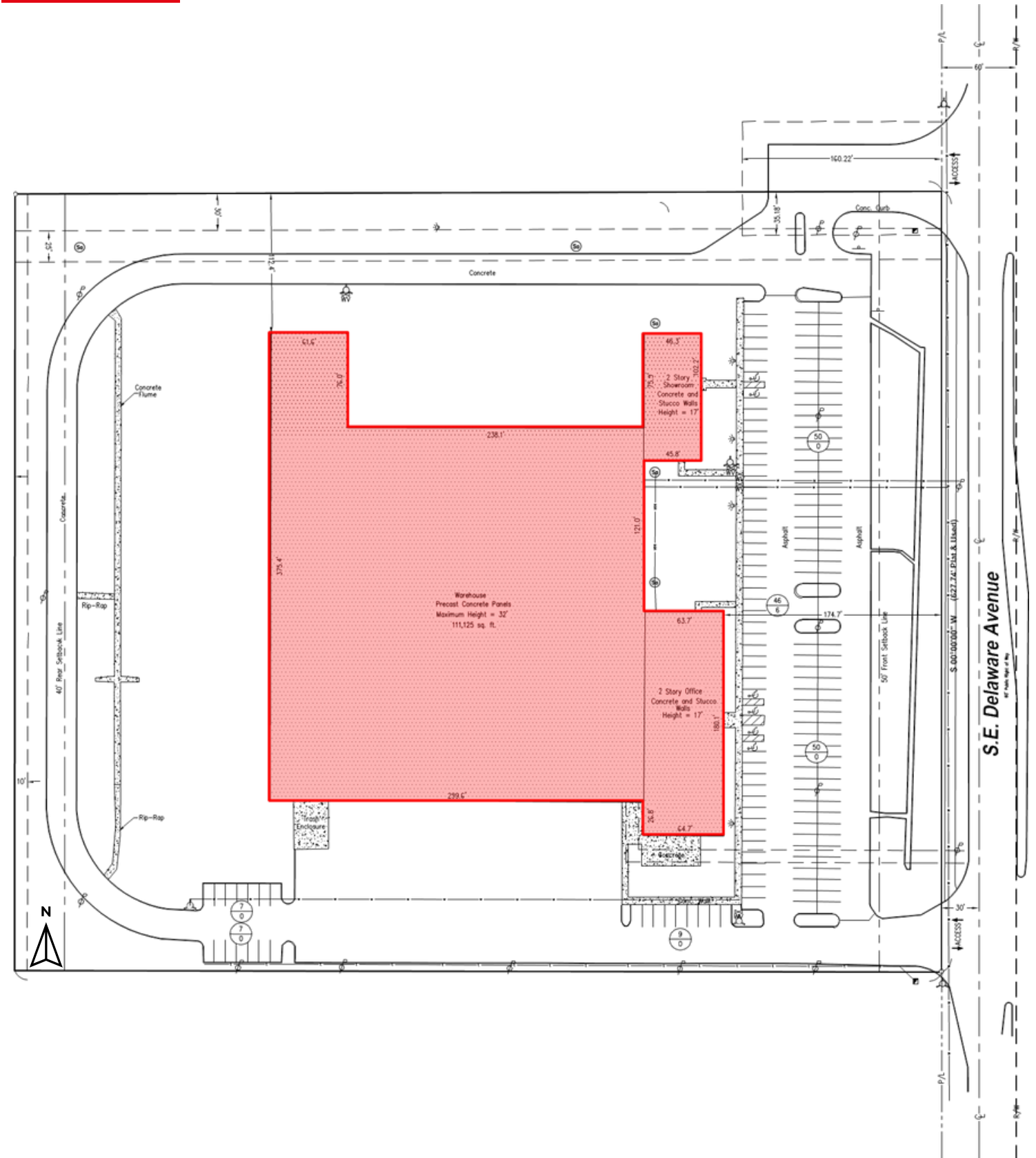
Available: 111,125 SF
Sublease rate: Contact broker for pricing
Est. OPEX: Available upon request
Sublease expiration: 12/31/2032

- Available for occupancy on 6/1/2026
- Flexible lease terms
- Office SF: +/- 11,590 SF
- Retail/showroom: +/- 4,734 SF
- Dock doors: 19
- Drive-in doors: 1 (12' x 14')
- Clear height: 22'
- Power: 3-phase 480V
- Trailer parking: 10 spots
- ESFR sprinkler system
- Existing chemical room

4602 SE Delaware Ave



Floor plan



4602 SE Delaware Ave



Images



4602 SE Delaware Ave

Ankeny, Iowa 50021



Contact

Austin Hedstrom, SIOR

Executive Vice President
+1 515 414 1767
austin.hedstrom@jll.com

Tanner Hedstrom

Vice President
+1 515 745 2734
tanner.hedstrom@jll.com

Marcus R. Pitts, CCIM, SIOR

Senior Managing Director
+1 515 556 4727
marcus.pitts@jll.com

jll.com/des-moines

Jones Lang LaSalle Americas, Inc., a licensed real estate broker in 48 states | DISCLAIMER Although information has been obtained from sources deemed reliable, neither Owner nor JLL makes any guarantees, warranties or representations, express or implied, as to the completeness or accuracy as to the information contained herein. Any projections, opinions, assumptions or estimates used are for example only. There may be differences between projected and actual results, and those differences may be material. The Property may be withdrawn without notice. Neither Owner nor JLL accepts any liability for any loss or damage suffered by any party resulting from reliance on this information. If the recipient of this information has signed a confidentiality agreement regarding this matter, this information is subject to the terms of that agreement. ©2026. Jones Lang LaSalle IP, Inc. All rights reserved.