

John LeFevres  
214-697-8623



**MACKEY CONSTRUCTION**  
COMMERCIAL REMODEL & REPAIR  
NEW CONSTRUCTION

402 S. Walker  
Mesquite, Texas 75149  
Cecil E. Mackey  
972-742-4516  
mackeycecil@yahoo.com

GLENSHIRE DRIVE

NORTH

L: 113.12' C.B. N 08° 38' 35" E

235.90'

0.2742 ACRE  
OR  
11,943.3096

S 17° 17' 00" W

ONE STORY BRICK

INTERSTATE

HIGHWAY  
VARIABLE WIDTH W.

635

POINT OF BEGINNING

S 89° 56' 45" E 10.00'

20.00'  
S 00° 03' 15" W

S 89° 56' 45" E 74.90'

QUAIL DRIVE

QUAIL DRIVE

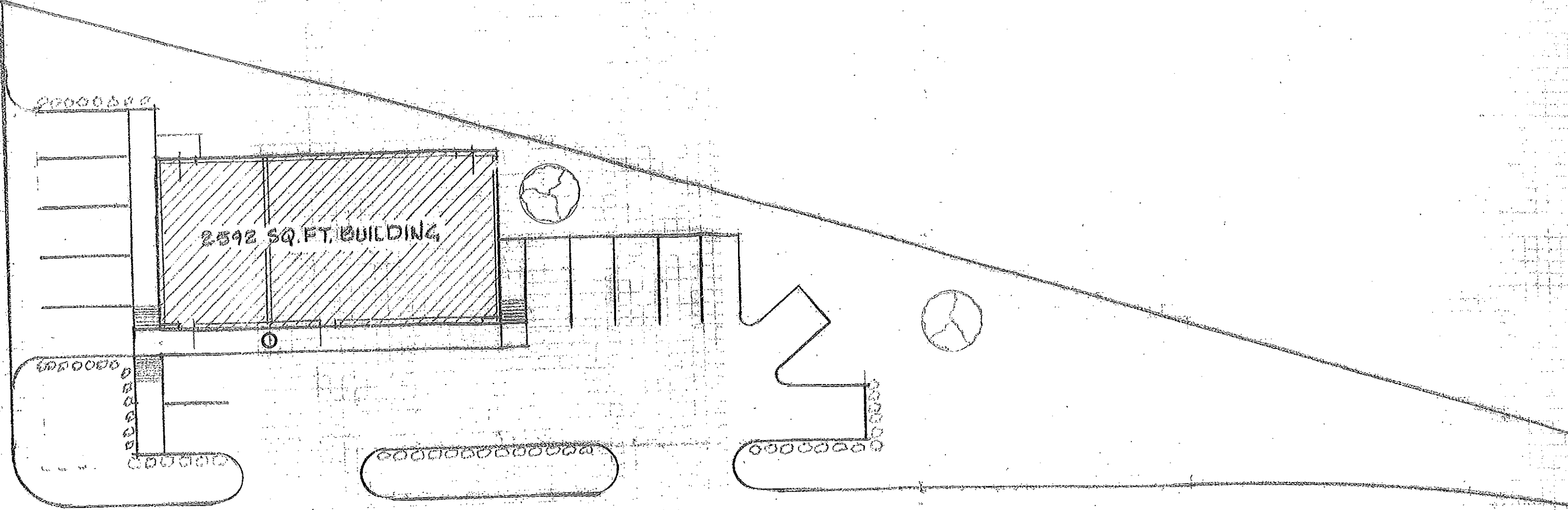
TO BEING...  
SOUTH...  
MAY 1915, P. 164

EASTMAN

SCALE

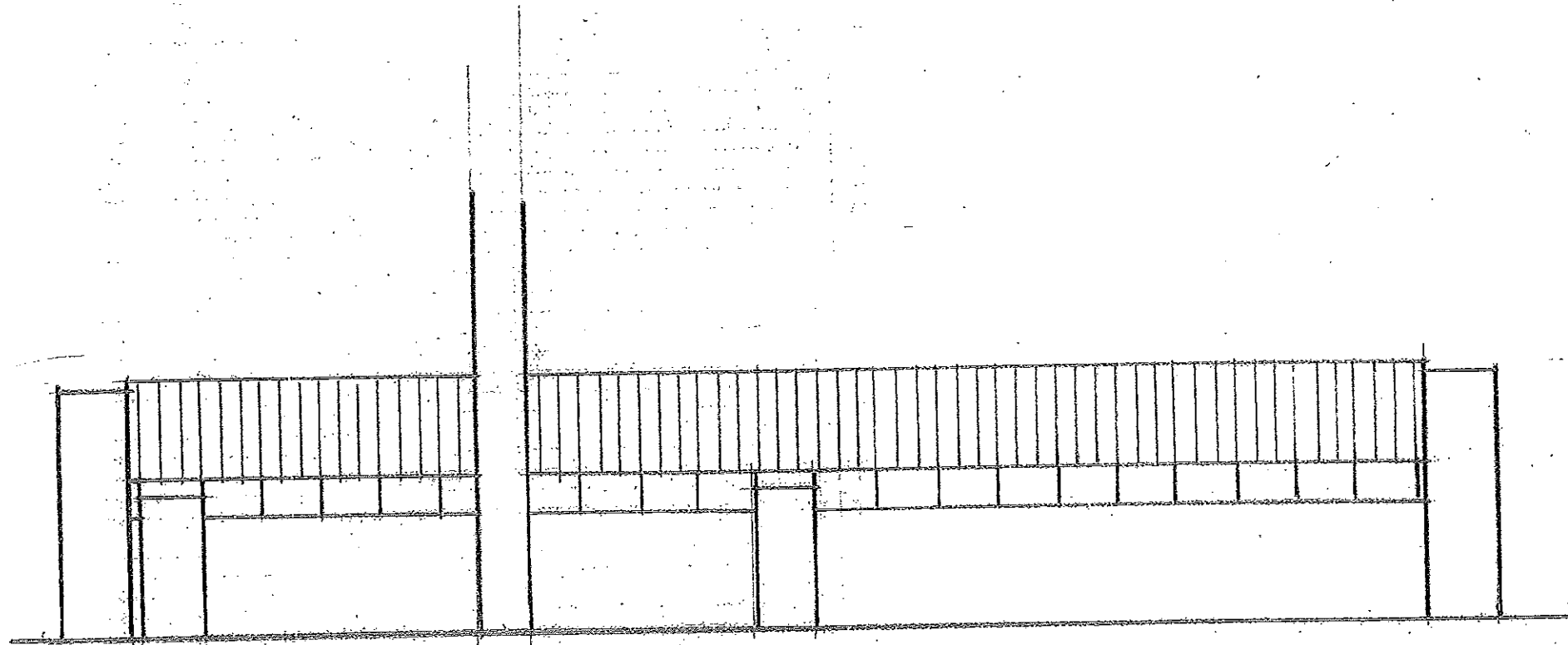
3 Phase and AVAILABLE  
GAS AVAILABLE

437' frontage



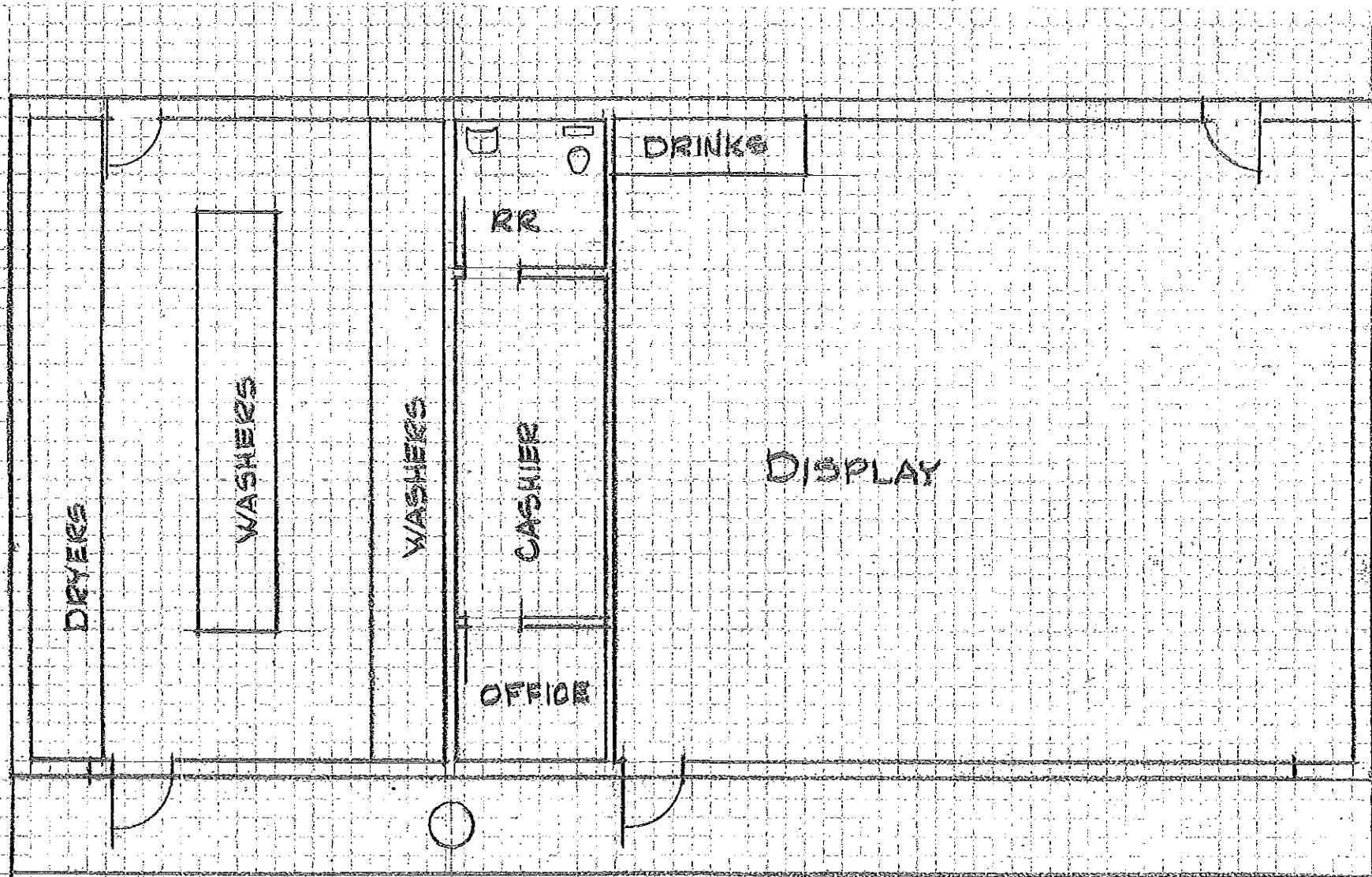
GLENSHIRE DRIVE

SITE PLAN  
SCALE 1"=20'-0"



FRONT ELEVATION

SCALE 1/8" = 1'-0"



SCALE 1/8" = 1'-0"

BY  
RN  
TV  
1/12  
1/12  
Washatee 12