



CUSHMAN &
WAKEFIELD

ChaneyBrooks

FULLY-LEASED WAREHOUSE FOR SALE

Halawa Business Park

99-1410 Koaha Place | Aiea, HI 96701



**BIG Price Reduction! Owner Retiring -
Will Cooperate with 1031 Exchange**

FOR SALE

Halawa Business Park

99-1410 Koaha Place | Aiea, HI 96701



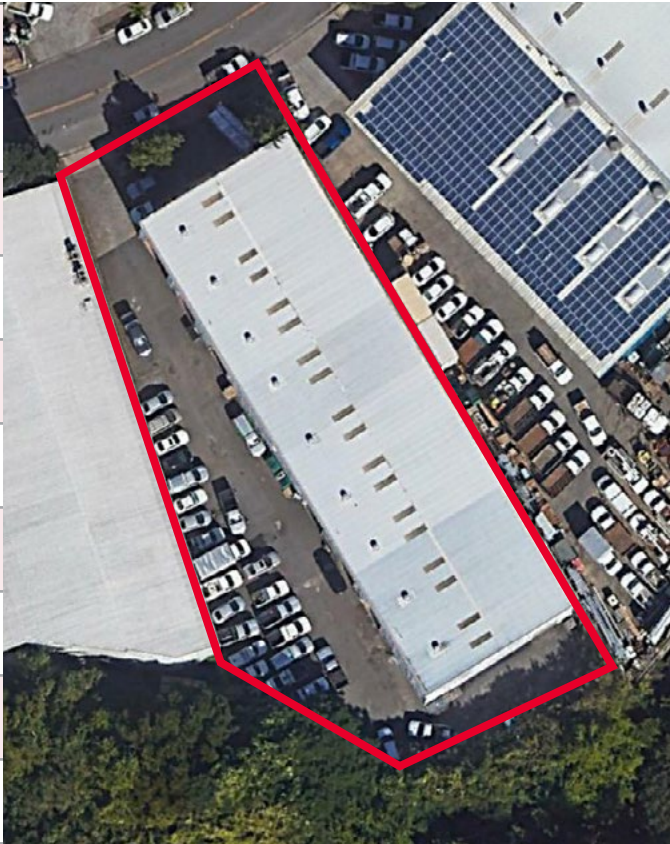
Property Summary

ASKING PRICE	\$790,000	ZONING	I-2 - Intensive Industrial District
2025 BUDGETED NOI	\$133,800	TENURE	Leasehold
ADDRESS	99-1410 Koaha Place Aiea, HI 96701	GROUND LESSOR	The Queen Emma Foundation
TAX MAP KEY	(1) 9-9-77: 15	CURRENT GROUND RENT (1/1/22-12/31/31)	\$260,075.00 (plus GET) per annum
BUILDING SIZE	15,820 SF	GROUND LEASE EXPIRATION	12/31/2046
LAND AREA	35,643 SF		
OCCUPANCY	100%		
# OF UNITS	6		
ROLL UP DOORS	7 Grade Level (12'-14' High)		
PARKING	Approx. 22 Stalls		
YEAR BUILT	1989		
HEIGHT LIMIT	60 Feet		

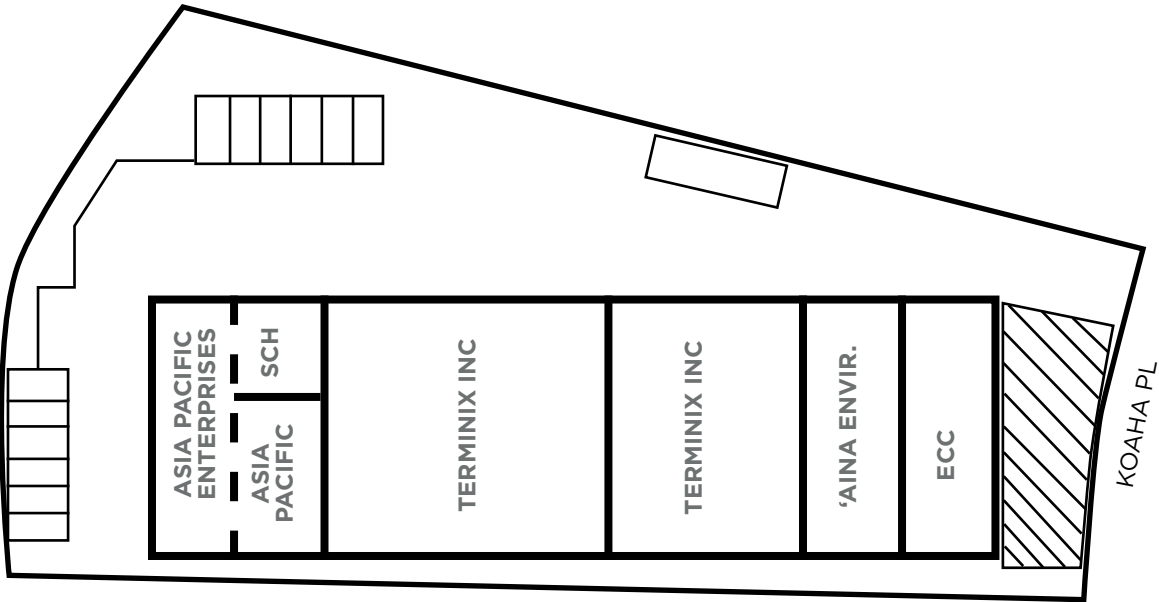


Investment Highlights

Fully-Leased Investment Property
22+ Foot High Cube Ceiling Heights
Stable Cash Flow from Quality Tenants
Restrooms included in all units
Air-Conditioned Office Mezzanines in majority of units
Gated Parking with approximately 22 stalls
Recently Completed Roof & Structural Repairs
Prime Location in Halawa Valley
Easy Access to H-1, H-3 and H201 Freeways
Close Proximity to the Daniel K. Inouye International Airport and Honolulu Harbor



Site Plan



Drawing not to scale

FOR SALE

Halawa Business Park

99-1410 Koaha Place | Aiea, HI 96701



CUSHMAN &
WAKEFIELD

ChaneyBrooks

Aerial / Location Map



Demographics

	1 Mile	3 Mile	5 Mile
Population	8,738	101,441	228,023
Median HH Income	\$88,141	\$82,358	\$79,430
Median Home Value	\$795,751	\$663,810	\$694,456



Rick Manayan (S)

Senior Real Estate Advisor

+1 808 348 6113

rmanayan@chaneybrooks.com

RS-39208

1440 Kapiolani Blvd., Suite 1010
Honolulu, HI

Main +1 808 544 1600

Fax +1 808 544 9574

cushmanwakefield.com

chaneybrooks.com

RB-17805

©2025 Cushman & Wakefield ChaneyBrooks. All rights reserved. The information contained in this communication is strictly confidential. This information has been obtained from sources believed to be reliable but has not been verified. NO WARRANTY OR REPRESENTATION, EXPRESS OR IMPLIED, IS MADE AS TO THE CONDITION OF THE PROPERTY (OR PROPERTIES) REFERENCED HEREIN OR AS TO THE ACCURACY OR COMPLETENESS OF THE INFORMATION CONTAINED HEREIN, AND SAME IS SUBMITTED SUBJECT TO ERRORS, OMISSIONS, CHANGE OF PRICE, RENTAL OR OTHER CONDITIONS, WITHDRAWAL WITHOUT NOTICE, AND TO ANY SPECIAL LISTING CONDITIONS IMPOSED BY THE PROPERTY OWNER(S). ANY PROJECTIONS, OPINIONS OR ESTIMATES ARE SUBJECT TO UNCERTAINTY AND DO NOT SIGNIFY CURRENT OR FUTURE PROPERTY PERFORMANCE.