

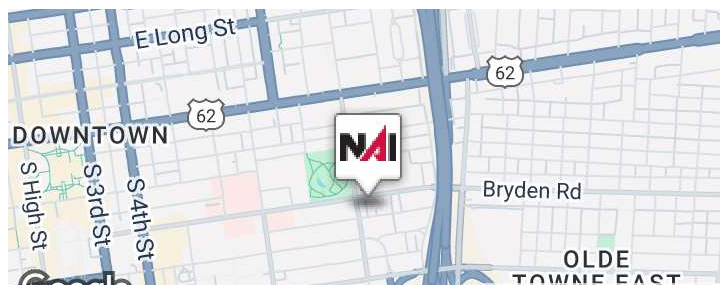


530 E. Town Street

530 E. Town Street
 Columbus, Ohio 43215

Property Highlights

- National Register of Historic Places
- 17,377 SF Multi-Use Building | 3,000 SF Outdoor Patio on 2nd Floor
- Uses can include Office, Retail, Entertainment, Hospitality, etc.
- Recent Extensive Renovation | High-End Finishes Throughout
- Large Multi-Purpose Rooms, Dance Hall, Full-Service Bar & Catering Kitchen
- 40 On-Site Parking Spaces | Two Parcels Totaling 0.51 Acres
- Apartment Unit Over Garage
- Convenient Access to I-71, I-670 & I-70
- Located Near the Topiary Park, Grant Medical Center, Columbus Metro Library, Franklin University & Columbus Museum of Art



Offering Summary

Sale Price:	\$2,100,000
Lease Rate:	\$11.50 SF/yr (MG)
Building Size:	17,377 SF
Lot Size:	0.51 Acres
Property Website:	www.530Town.com

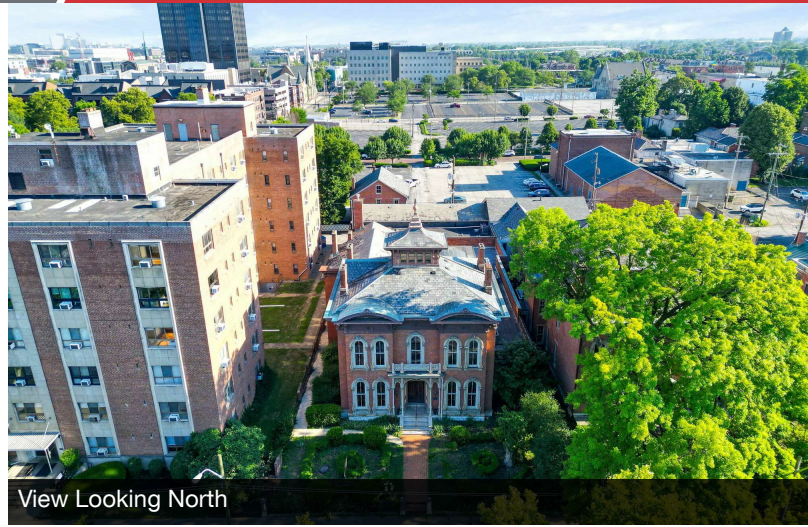
For More Information

Matt Gregory, SIOR, CCIM
 O: 614 629 5234
mgregory@ohioequities.com

We obtained the information above from sources we believe to be reliable. However, we have not verified its accuracy and make no guarantee, warranty or representation about it. It is submitted subject to the possibility of errors, omissions, change of price, rental or other conditions, prior sale, lease or financing, or withdrawal without notice. We include projections, opinions, assumptions or estimates for example only, and they may not represent current or future performance of the property. You and your tax and legal advisors should conduct your own investigation of the property and transaction.



Front View



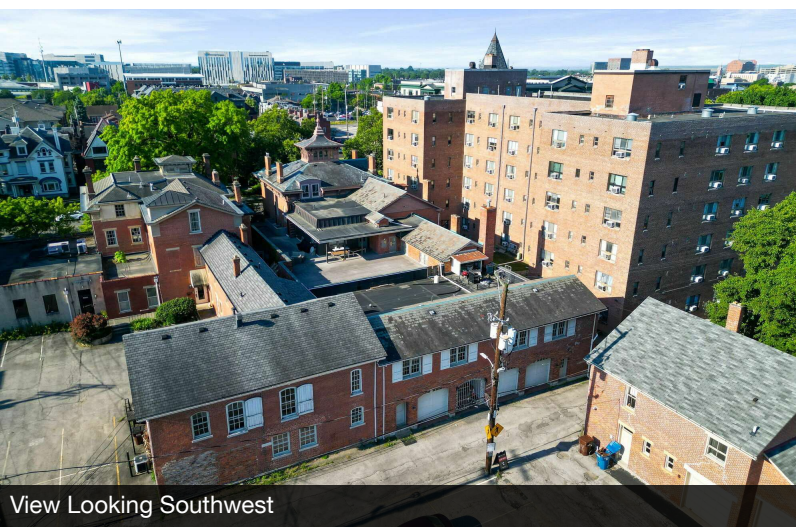
View Looking North



View Looking Northeast



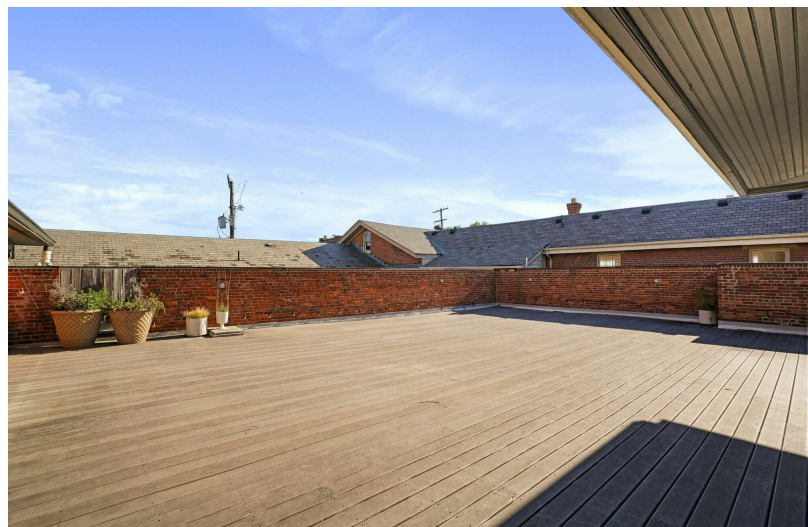
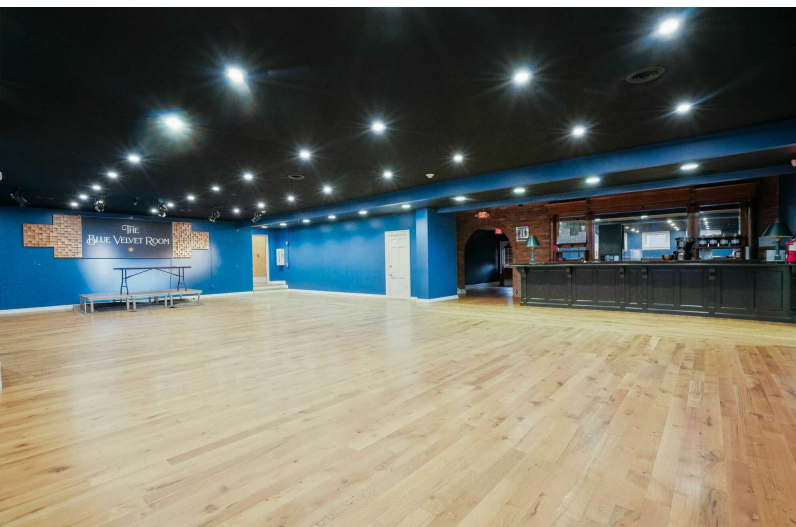
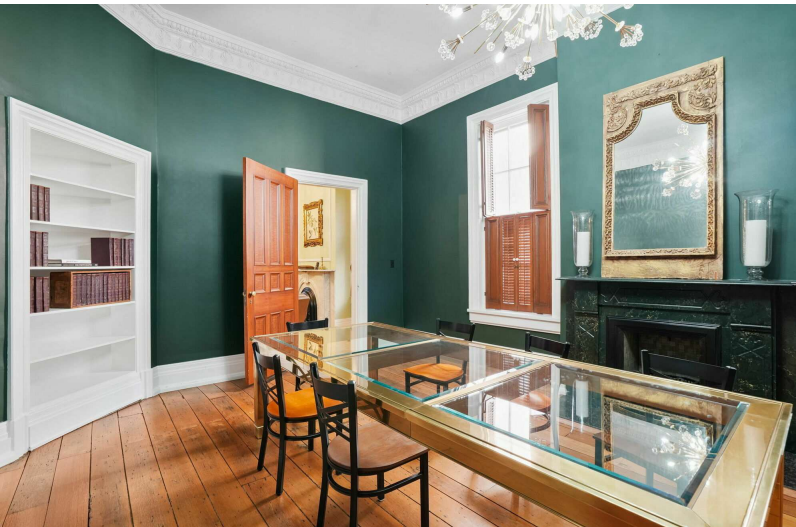
View Looking Northwest



View Looking Southwest

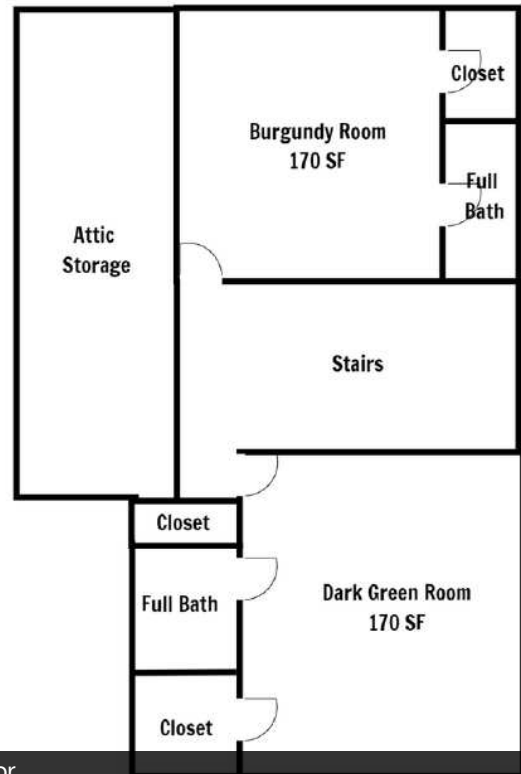


View Looking South





Second Floor



Third Floor

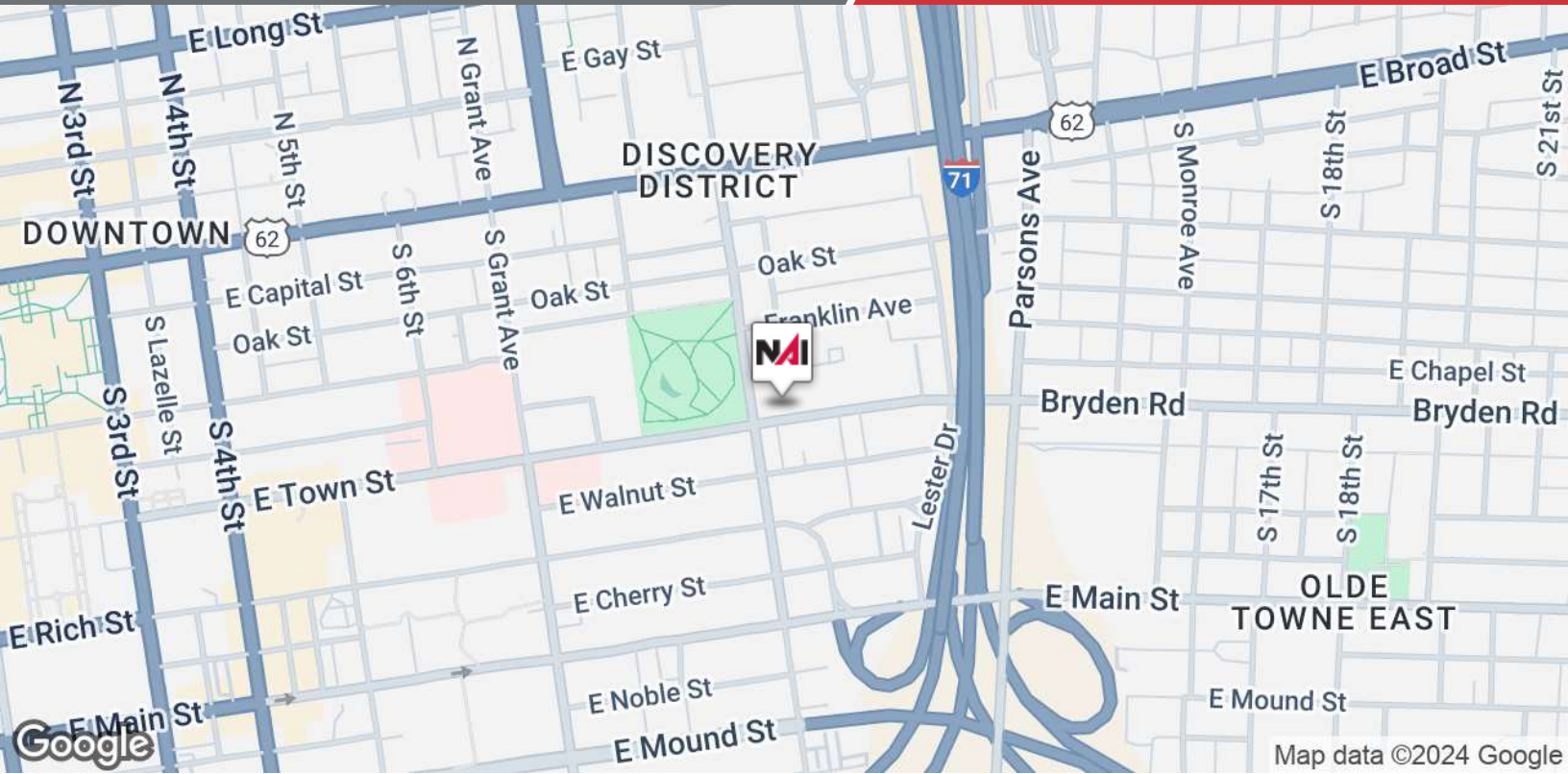
First Floor

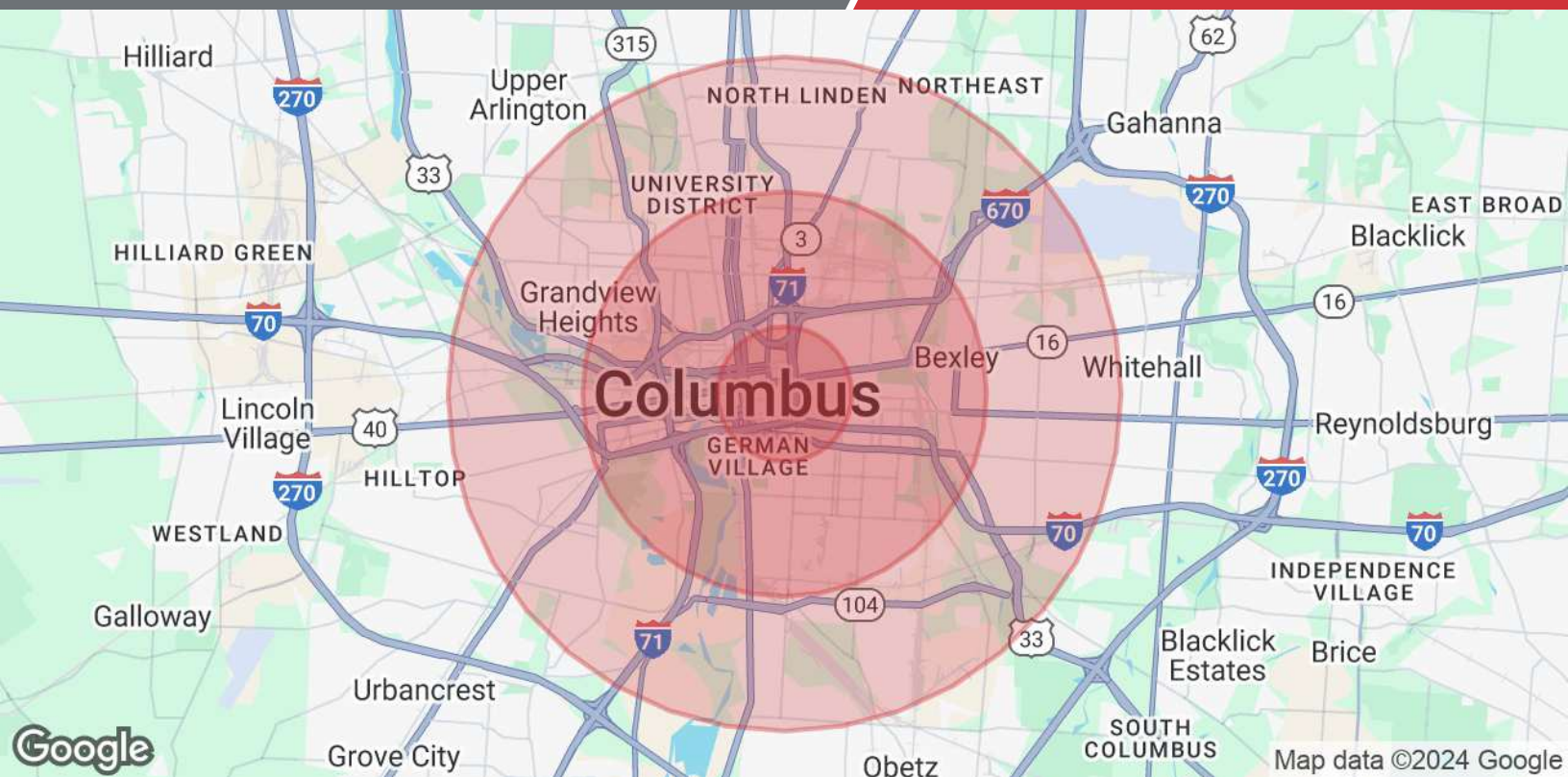
We obtained the information above from sources we believe to be reliable. However, we have not verified its accuracy and make no guarantee, warranty or representation about it. It is submitted subject to the possibility of errors, omissions, change of price, rental or other conditions, prior sale, lease or financing, or withdrawal without notice. We include projections, opinions, assumptions or estimates for example only, and they may not represent current or future performance of the property. You and your tax and legal advisors should conduct your own investigation of the property and transaction.



Map data ©2024 Google Imagery ©2024 Airbus, CNES / Airbus, Maxar Technologies

We obtained the information above from sources we believe to be reliable. However, we have not verified its accuracy and make no guarantee, warranty or representation about it. It is submitted subject to the possibility of errors, omissions, change of price, rental or other conditions, prior sale, lease or financing, or withdrawal without notice. We include projections, opinions, assumptions or estimates for example only, and they may not represent current or future performance of the property. You and your tax and legal advisors should conduct your own investigation of the property and transaction.





Population	1 Mile	3 Miles	5 Miles
Total Population	20,131	138,758	319,024
Average Age	39	35	35
Average Age (Male)	39	35	35
Average Age (Female)	38	35	36
Households & Income	1 Mile	3 Miles	5 Miles
Total Households	11,717	66,185	136,709
# of Persons per HH	1.7	2.1	2.3
Average HH Income	\$85,715	\$80,489	\$75,665
Average House Value	\$573,933	\$397,410	\$304,925

Demographics data derived from AlphaMap