

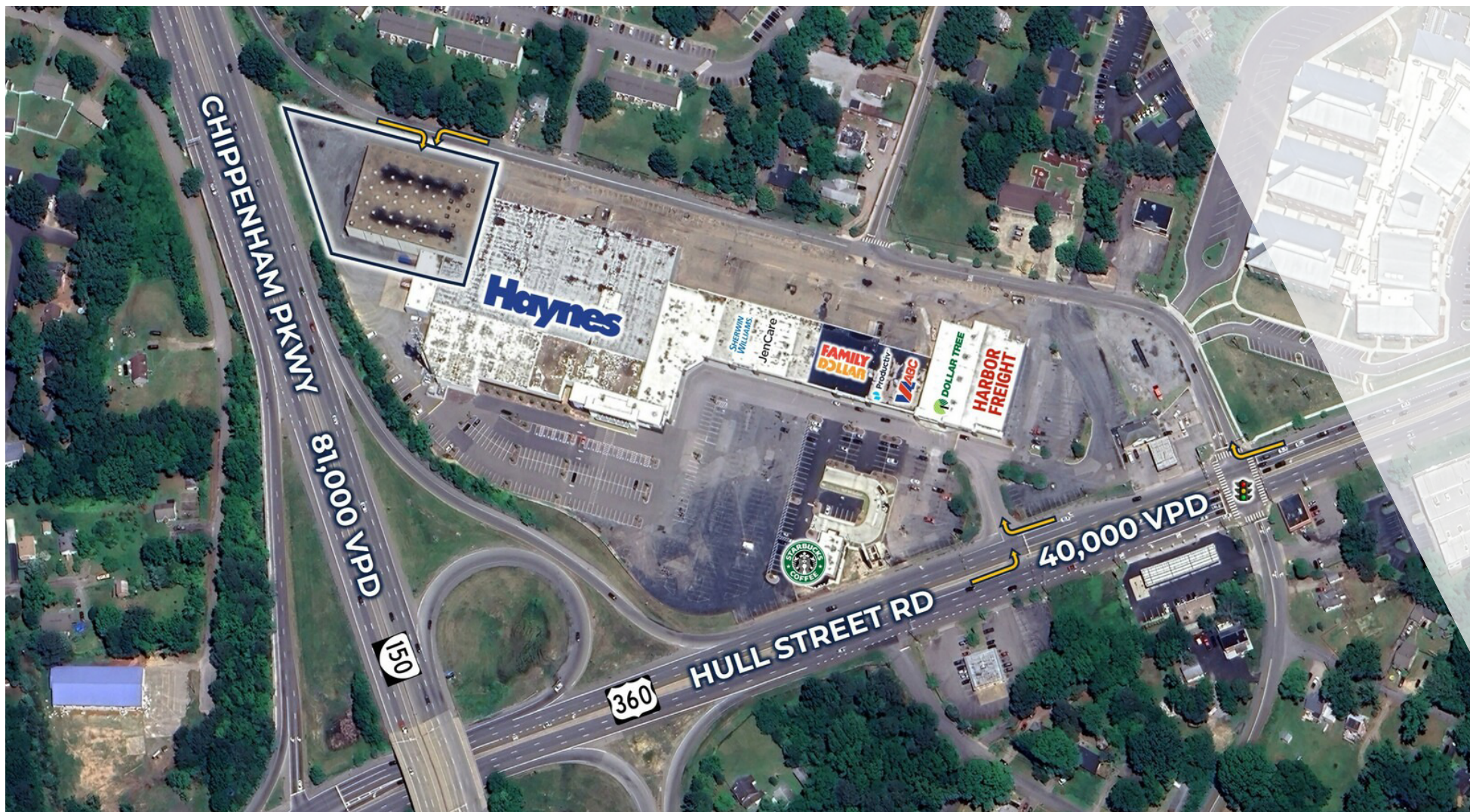
FOR LEASE

WAREHOUSE SPACE

6550 Hull Street Rd | Richmond, VA 23224



S.L. NUSBAUM
REALTY CO.



NATHAN SHOR

Senior Vice President | Partner

O. 804.944.2399

C. 804.539.7404

nshor@slnusbaum.com

ADAM SHOR

Senior Associate

O. 804.944.2437

C. 804.332.3323

ashor@slnusbaum.com

PROUD PARTNER

XTEAM
RETAIL ADVISORS

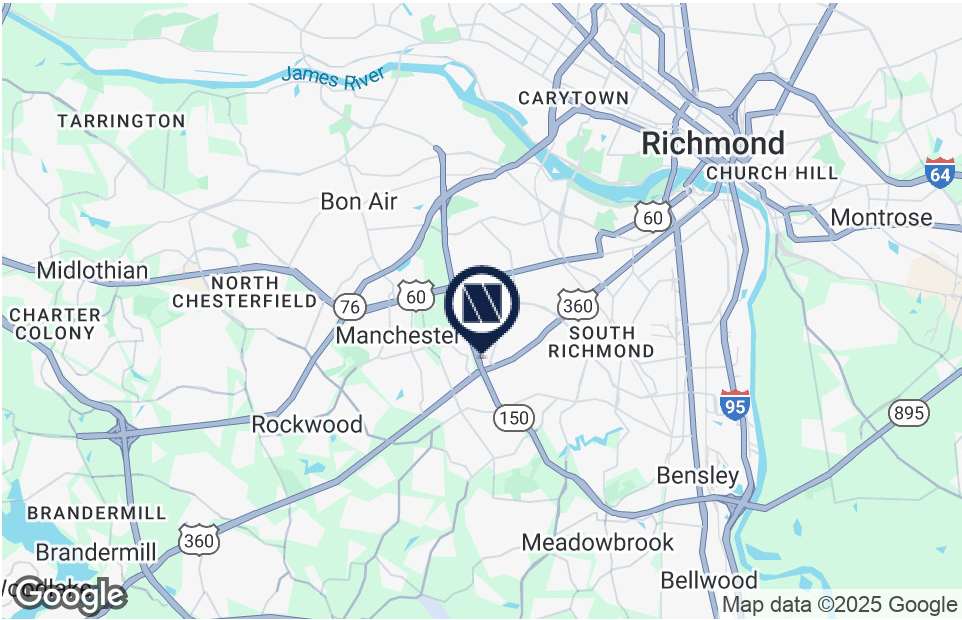
PROPERTY SUMMARY

WAREHOUSE SPACE

6550 Hull Street Rd | Richmond, VA 23224



S.L. NUSBAUM
REALTY CO.



OFFERING SUMMARY

Lease Rate:	\$7.00 SF/yr (NNN)
Building Size:	33,000 SF
Zoning:	B-3

DEMOGRAPHICS	1 MILE	3 MILES	5 MILES
Total Population	10,205	83,726	191,645
Total Households	3,894	33,513	76,161
Average HH Income	\$67,780	\$71,193	\$83,140

PROPERTY OVERVIEW

Regional Location with Chippenham Parkway access

PROPERTY HIGHLIGHTS

- City of Richmond
- 1/3 of an acre fenced yard
- Racking system in place - 10 dual racks + 2 single racks
- 150' width x 220' length

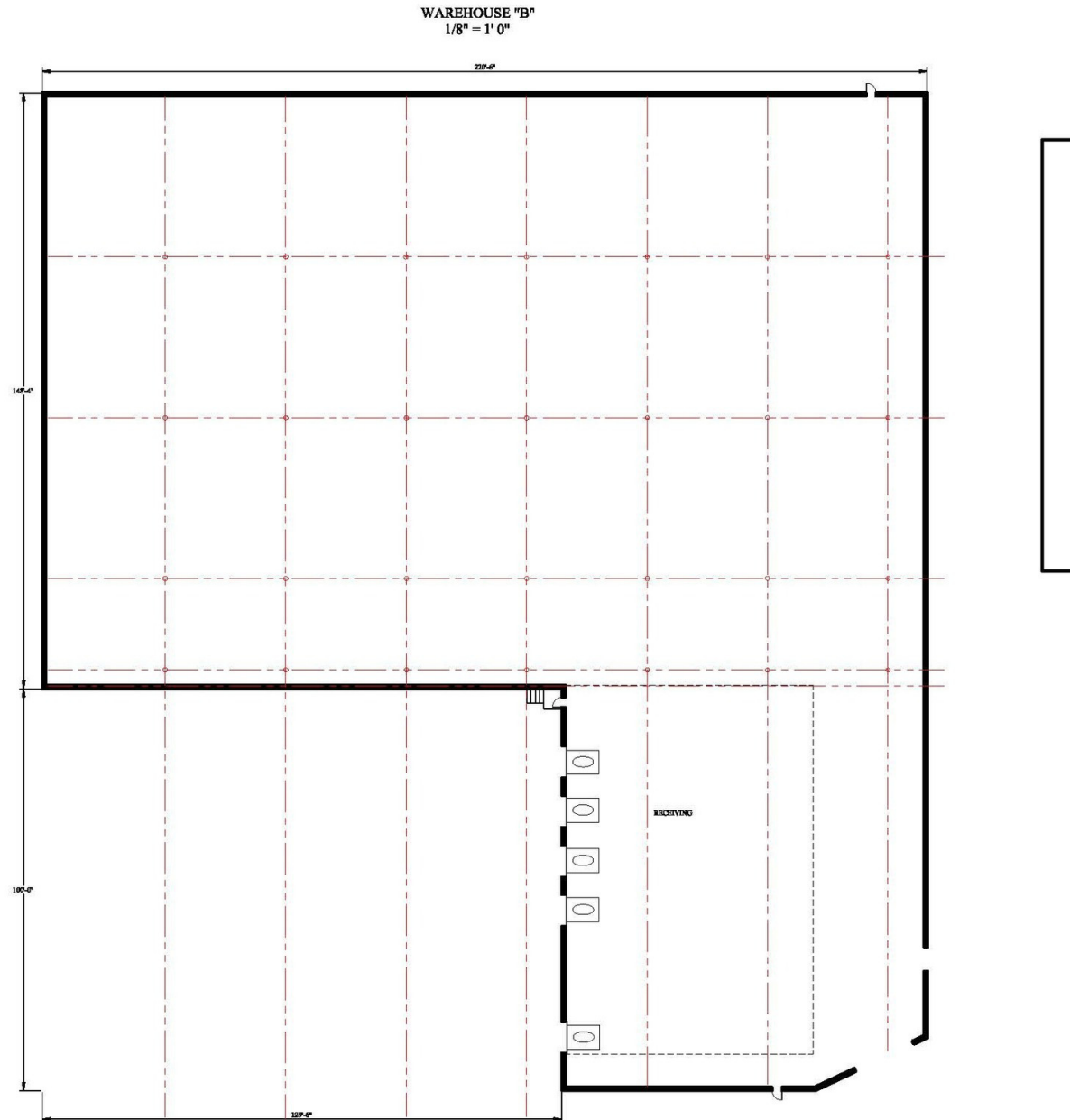
FLOOR PLAN

WAREHOUSE SPACE

6550 Hull Street Rd | Richmond, VA 23224



S.L. NUSBAUM
REALTY CO.



INTERIOR PHOTOS

WAREHOUSE SPACE

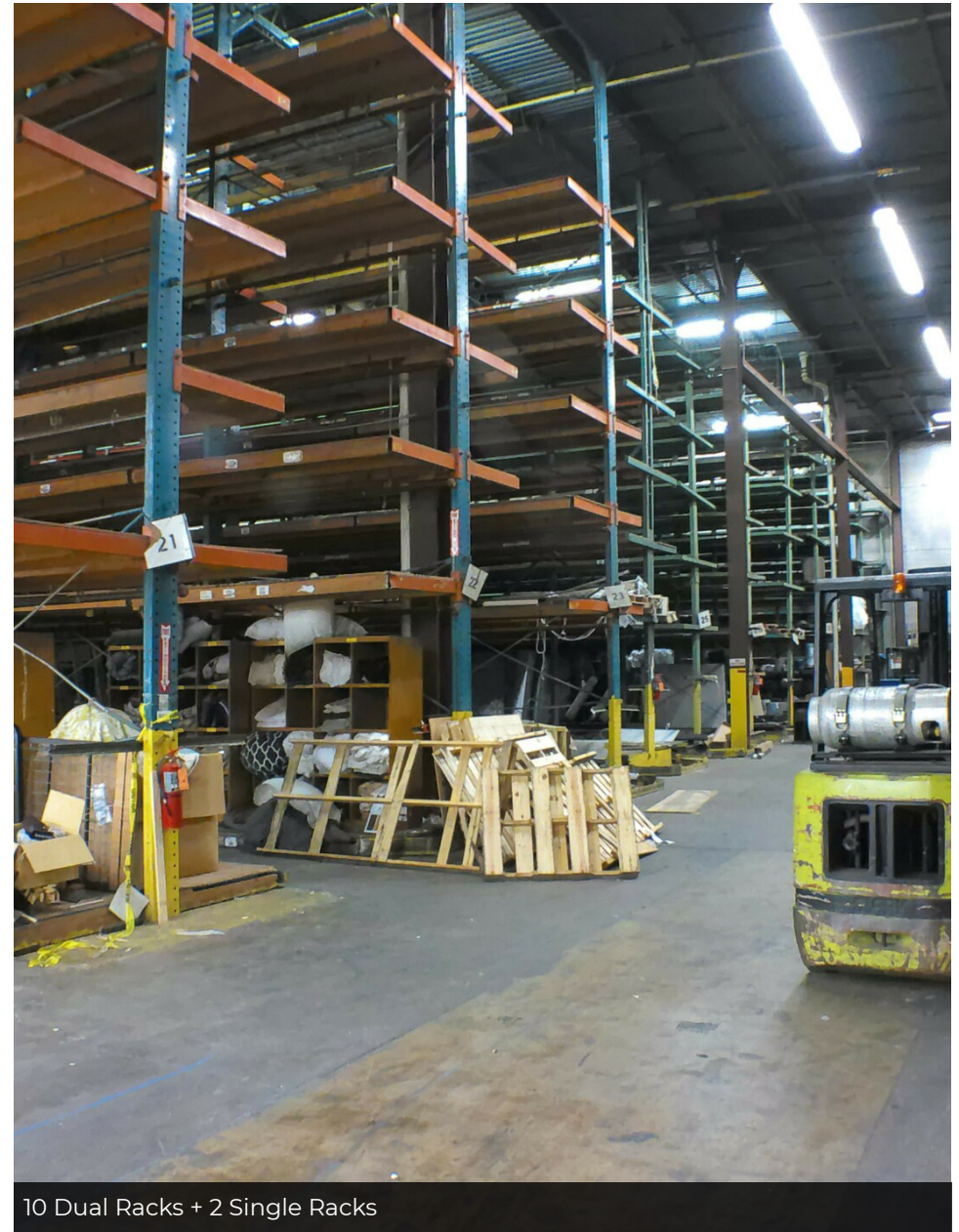
6550 Hull Street Rd | Richmond, VA 23224



S.L. NUSBAUM
REALTY CO.



2 Dock-Height Doors



10 Dual Racks + 2 Single Racks

EXTERIOR PHOTOS

WAREHOUSE SPACE

6550 Hull Street Rd | Richmond, VA 23224



S.L. NUSBAUM
REALTY CO.



Third of an Acre Fenced Yard



2 Dock-Height Doors

TRADE AREA

WAREHOUSE SPACE

6550 Hull Street Rd | Richmond, VA 23224



S.L. NUSBAUM

REALTY CO.



CONTACT INFORMATION

WAREHOUSE SPACE

6550 Hull Street Rd | Richmond, VA 23224



S.L. NUSBAUM

REALTY CO.

NATHAN SHOR

Senior Vice President | Partner

C. 804.539.7404

O. 804.944.2399

nshor@slnusbaum.com

ADAM SHOR

Senior Associate

C. 804.332.3323

O. 804.944.2437

ashor@slnusbaum.com

COMMITMENT. INTEGRITY. EXCELLENCE. SINCE 1906.

Serving the Southeast and Mid-Atlantic region for well over a century, S.L. Nusbaum Realty Co. continues to provide a comprehensive experience for our clients and customers in all aspects of the multifamily and commercial real estate industry.

CLICK HERE TO LEARN MORE

PROUD PARTNER

XTEAM

RETAIL ADVISORS

CLICK HERE TO LEARN MORE

DISCLAIMER:

No warranty or representation, expressed or implied, is made to the accuracy or completeness of the information contained herein, and same is submitted subject to errors, omissions, change of price, rental or other conditions, withdrawal without notice, and to any special listing conditions imposed by the property owner(s). As applicable, we make no representation as to the condition of the property (or properties) in question or the property's (or properties') compliance with applicable laws, regulations, and codes.