

OFFICE



FOR SUBLEASE



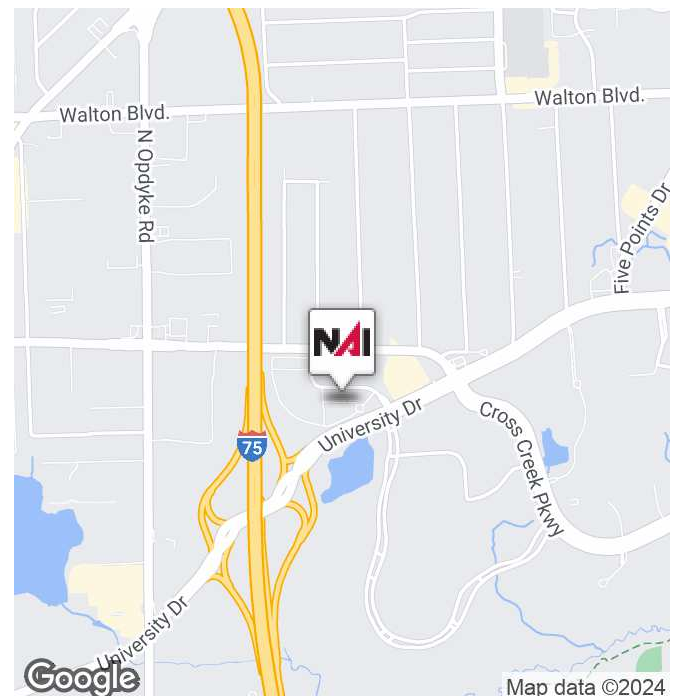
Suite 350: 3,194-8,340 RSF

2701 Cambridge Court

Auburn Hills, Michigan 48326

Property Highlights

- Two Suites Available For Sublease - 5,146 SF & 3,194 SF
- \$16.95/SF Sublease Rate
- Furniture Available
- Plug and Play Ready
- Immediate Occupancy
- Recently Renovated Property with Class A Finishes
- Sublease Term Expires 12/31/27
- Located at I-75/University Drive in Auburn Hills
- Direct Access to I-75
- Adjacent to New Dunkin Doughnuts, Feshii, Ziggy's Cheesesteaks, Subway, Spargo, Taste of Thailand, Domino's and Jersey Mikes
- Less than One Minute Away from Starbucks, Blaze Pizza, Mediterranean Street Food, Red Olive, DiBella's, Banks, Credit Unions and New Extended Stay America



NAI Farbman

Commercial Real Estate Services, Worldwide.

www.naifarbman.com

Lesley Gutman

Senior Vice President | 248.860.6800

lgutman@farbman.com

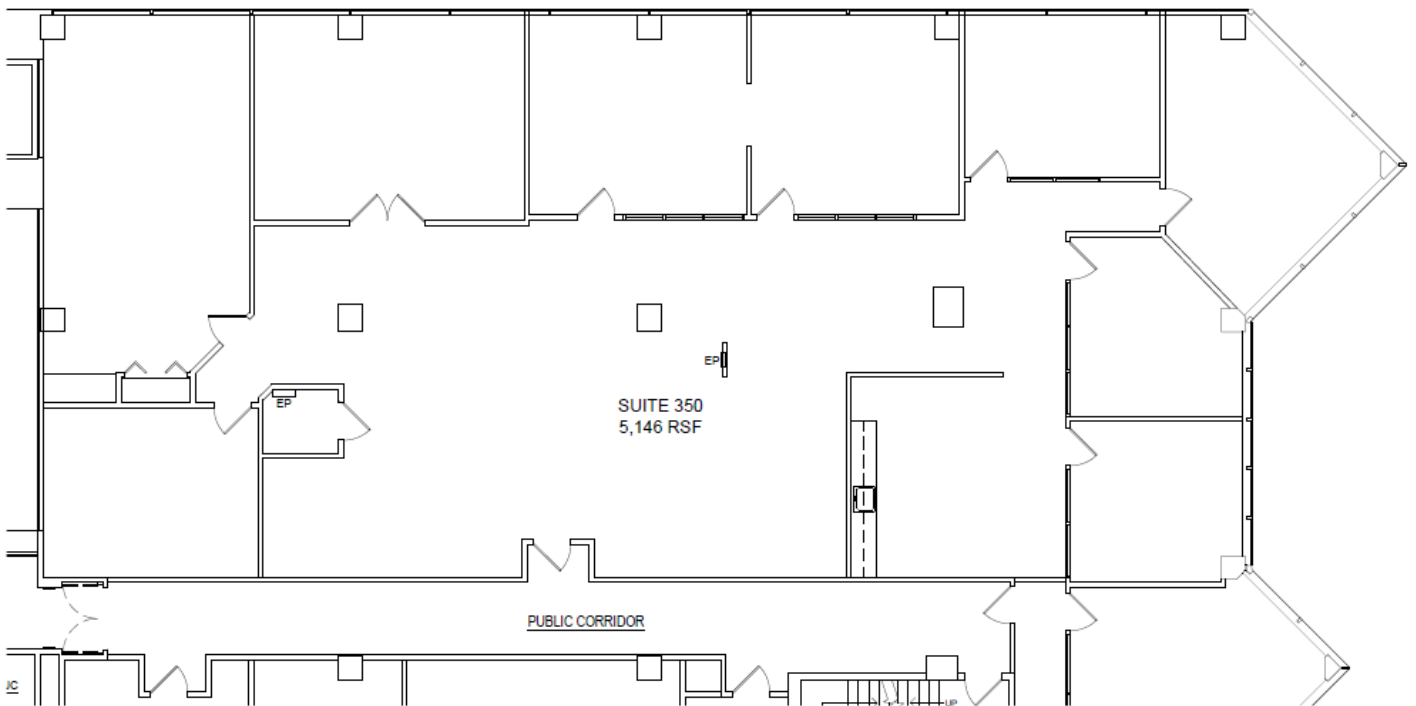
NO WARRANTY, EXPRESS OR IMPLIED, IS MADE AS TO THE ACCURACY OF THE INFORMATION CONTAINED HEREIN. THIS INFORMATION IS SUBMITTED SUBJECT TO ERRORS, OMISSIONS, CHANGE OF PRICE, RENTAL OR OTHER CONDITIONS, WITHDRAWAL WITHOUT NOTICE, AND IS SUBJECT TO ANY SPECIAL LISTING CONDITIONS IMPOSED BY OUR PRINCIPALS. COOPERATING BROKERS, BUYERS, TENANTS AND OTHER PARTIES WHO RECEIVE THIS DOCUMENT SHOULD NOT RELY ON IT, BUT SHOULD USE IT AS A STARTING POINT OF ANALYSIS, AND SHOULD INDEPENDENTLY CONFIRM THE ACCURACY OF THE INFORMATION CONTAINED HEREIN THROUGH A DUE DILIGENCE REVIEW OF THE BOOKS, RECORDS, FILES AND DOCUMENTS THAT CONSTITUTE RELIABLE SOURCES OF THE INFORMATION DESCRIBED HEREIN. LOGOS ARE FOR IDENTIFICATION PURPOSES ONLY AND MAY BE TRADEMARKS OF THEIR RESPECTIVE COMPANIES. NAI Farbman, INC. CA BRE LIC. #01990696.

OFFICE



FOR SUBLEASE

Suite 350A - 5,146 RSF



2701 CAMBRIDGE COURT
SUITE 350 FLOOR PLAN

SCALE: 1/8" = 1'-0"

PREPARED BY METRO CAD GROUP

NAI Farbman

Commercial Real Estate Services, Worldwide.

www.naifarbman.com

Lesley Gutman
Senior Vice President | 248.860.6800
lgutman@farbman.com

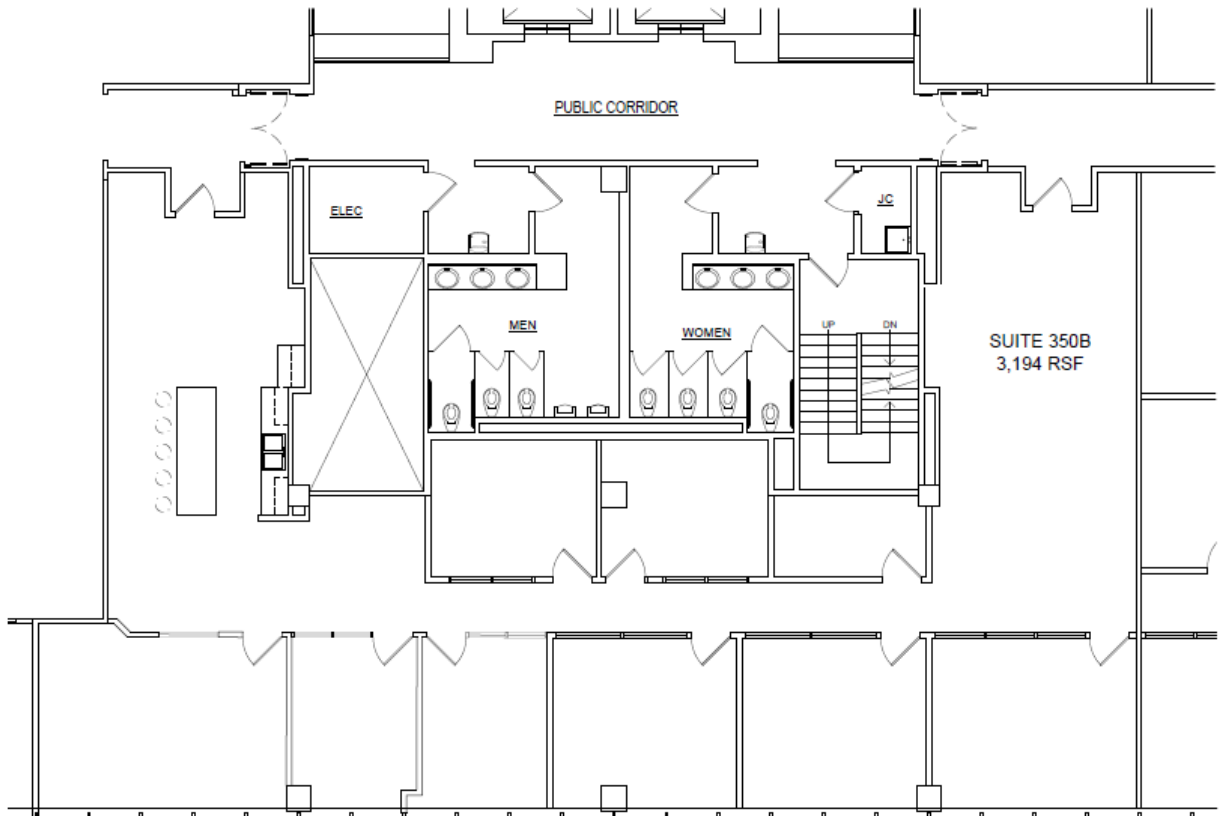
NO WARRANTY, EXPRESS OR IMPLIED, IS MADE AS TO THE ACCURACY OF THE INFORMATION CONTAINED HEREIN. THIS INFORMATION IS SUBMITTED SUBJECT TO ERRORS, OMISSIONS, CHANGE OF PRICE, RENTAL OR OTHER CONDITIONS, WITHDRAWAL WITHOUT NOTICE, AND IS SUBJECT TO ANY SPECIAL LISTING CONDITIONS IMPOSED BY OUR PRINCIPALS, COOPERATING BROKERS, BUYERS, TENANTS AND OTHER PARTIES WHO RECEIVE THIS DOCUMENT SHOULD NOT RELY ON IT, BUT SHOULD USE IT AS A STARTING POINT OF ANALYSIS, AND SHOULD INDEPENDENTLY CONFIRM THE ACCURACY OF THE INFORMATION CONTAINED HEREIN THROUGH A DUE DILIGENCE REVIEW OF THE BOOKS, RECORDS, FILES AND DOCUMENTS THAT CONSTITUTE RELIABLE SOURCES OF THE INFORMATION DESCRIBED HEREIN. LOGOS ARE FOR IDENTIFICATION PURPOSES ONLY AND MAY BE TRADEMARKS OF THEIR RESPECTIVE COMPANIES. NAI Farbman, INC. CA BRE LIC. #01990696.

OFFICE



FOR SUBLEASE

Suite 350B - 3,194 RSF



2701 CAMBRIDGE COURT
SUITE 350B FLOOR PLAN

SCALE: 1/8" = 1'-0"

PREPARED BY METRO CAD GROUP

NAI Farbman

Commercial Real Estate Services. Worldwide.
www.naifarbman.com

Lesley Gutman
Senior Vice President | 248.860.6800
lgutman@farbman.com

NO WARRANTY, EXPRESS OR IMPLIED, IS MADE AS TO THE ACCURACY OF THE INFORMATION CONTAINED HEREIN. THIS INFORMATION IS SUBMITTED SUBJECT TO ERRORS, OMISSIONS, CHANGE OF PRICE, RENTAL OR OTHER CONDITIONS, WITHDRAWAL WITHOUT NOTICE, AND IS SUBJECT TO ANY SPECIAL LISTING CONDITIONS IMPOSED BY OUR PRINCIPALS, COOPERATING BROKERS, BUYERS, TENANTS AND OTHER PARTIES WHO RECEIVE THIS DOCUMENT SHOULD NOT RELY ON IT, BUT SHOULD USE IT AS A STARTING POINT OF ANALYSIS, AND SHOULD INDEPENDENTLY CONFIRM THE ACCURACY OF THE INFORMATION CONTAINED HEREIN THROUGH A DUE DILIGENCE REVIEW OF THE BOOKS, RECORDS, FILES AND DOCUMENTS THAT CONSTITUTE RELIABLE SOURCES OF THE INFORMATION DESCRIBED HEREIN. LOGOS ARE FOR IDENTIFICATION PURPOSES ONLY AND MAY BE TRADEMARKS OF THEIR RESPECTIVE COMPANIES. NAI Farbman, INC. CA BRE LIC. #01990696.