

# 7919

## FOLSOM BOULEVARD

SACRAMENTO, CA

**EXCLUSIVELY LISTED BY:**

**TONY WHITTAKER**

Senior Vice President  
+1 916.492.6914  
tony.whittaker@cbre.com  
Lic. 01780828

**NELLIE CRUZ**

Vice President  
+1 916.492.6915  
nellie.cruz@cbre.com  
Lic. 02086140

7919

**CBRE**

# PROPERTY HIGHLIGHTS



LUSH LANDSCAING AND  
PLANNED NEW OUTDOOR  
PATIO FURNITURE



MODERN FINISHES,  
EXPANSIVE WINDOWLINES



EV CHARGING STATIONS  
ON SITE



PARKING RATIO:  
4/1,000 SF, 285 PARKING  
STALLS ON SITE



CLOSE TO THE AMERICAN  
RIVER BIKE TRAIL



CLOSE TO A VARIETY OF  
AMENITIES INCLUDING THE  
UV, PAVILIONS, AND  
LOEHMAN'S PLAZA

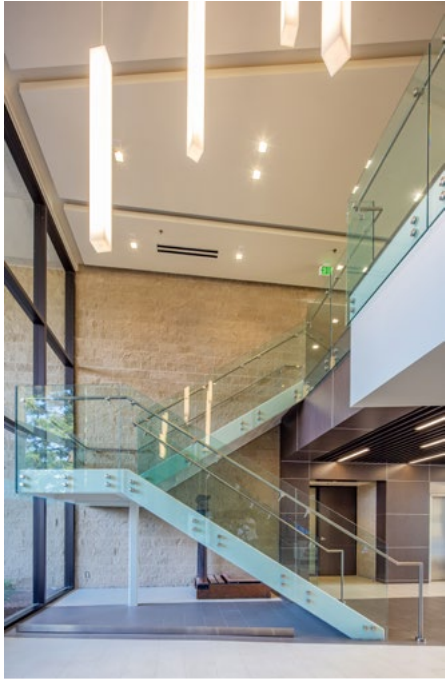


SUITES IN SHELL CONDITION  
FOR OWNERHSIP TO WORK  
WITH TENANTS ON THEIR  
EXACT BUILD OUT



7 MINUTES TO DOWNTOWN  
SACRAMENTO

# PROPERTY PHOTOS



# AVAILABILITY

## SUITE

SUITE 150

SUITES 200/201

SUITE 320

SUITE 350

## SQUARE FOOTAGE

±2,632 RSF

±5,000-24,503 RSF

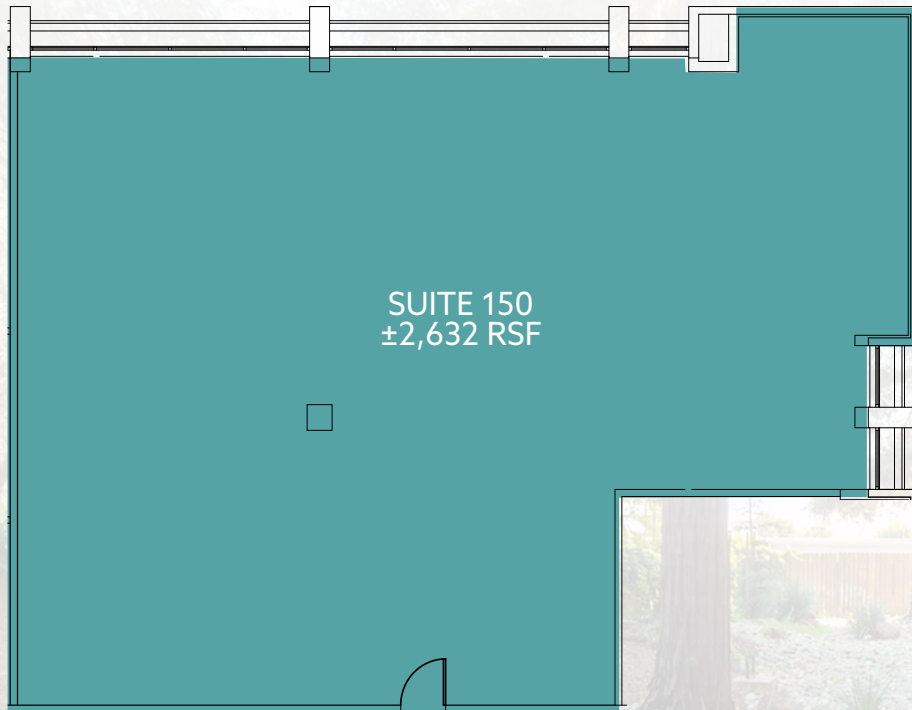
±3,927 RSF

±1,261 RSF

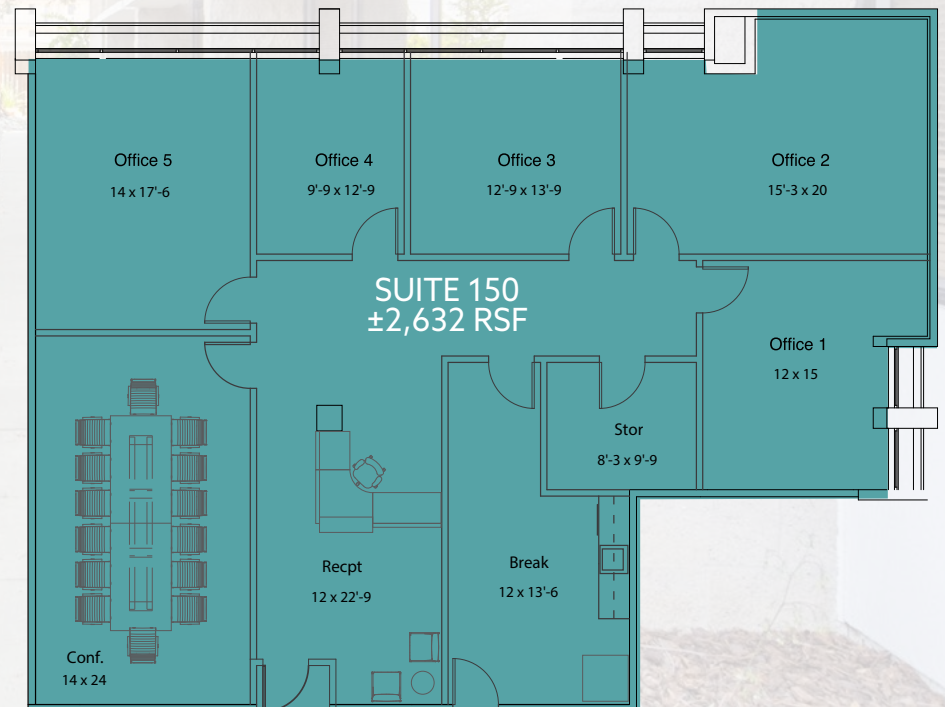
# FIRST FLOOR

SUITE 150 - ±2,632 RSF

AS-BUILT FLOOR PLAN

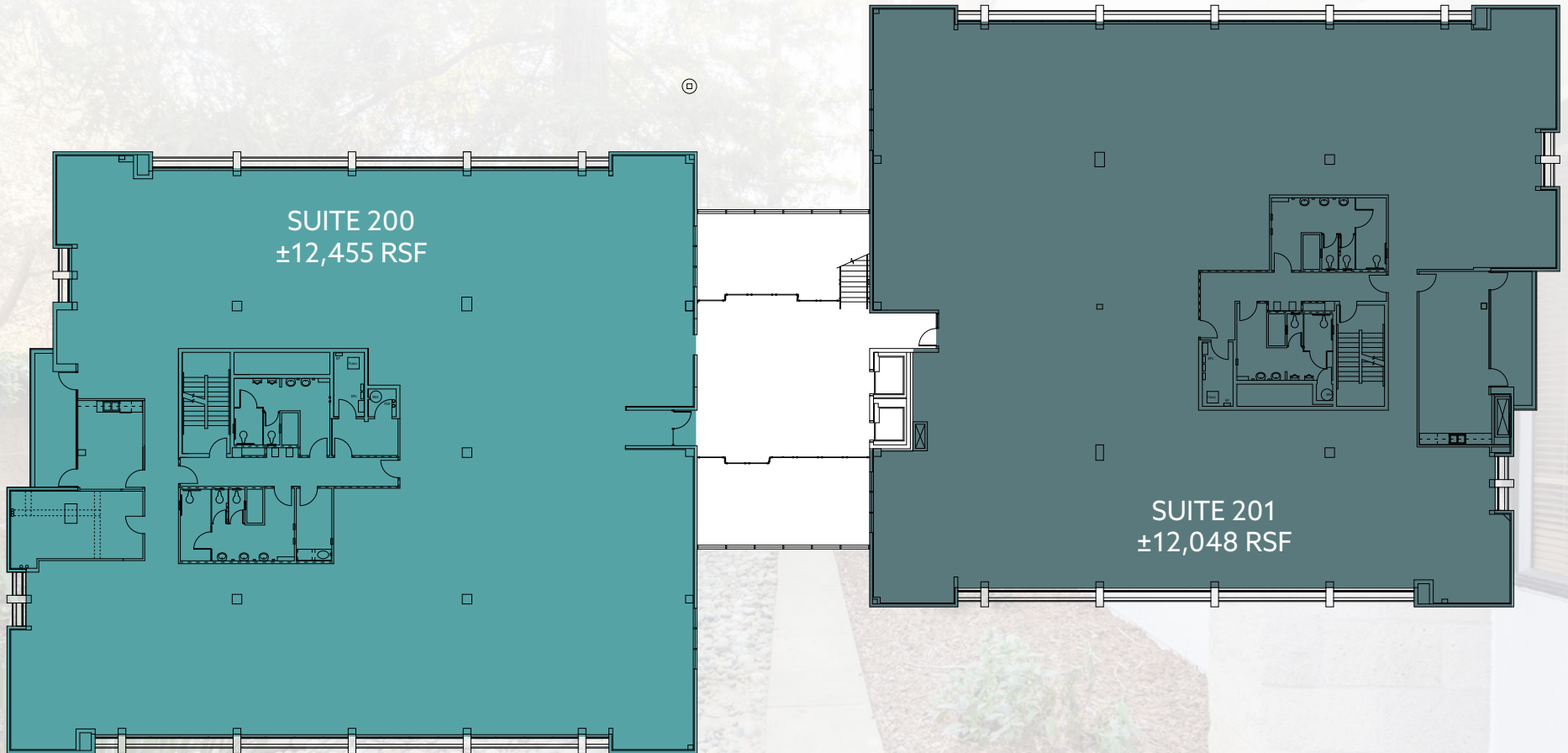


HYPOTHETICAL SPACE PLAN



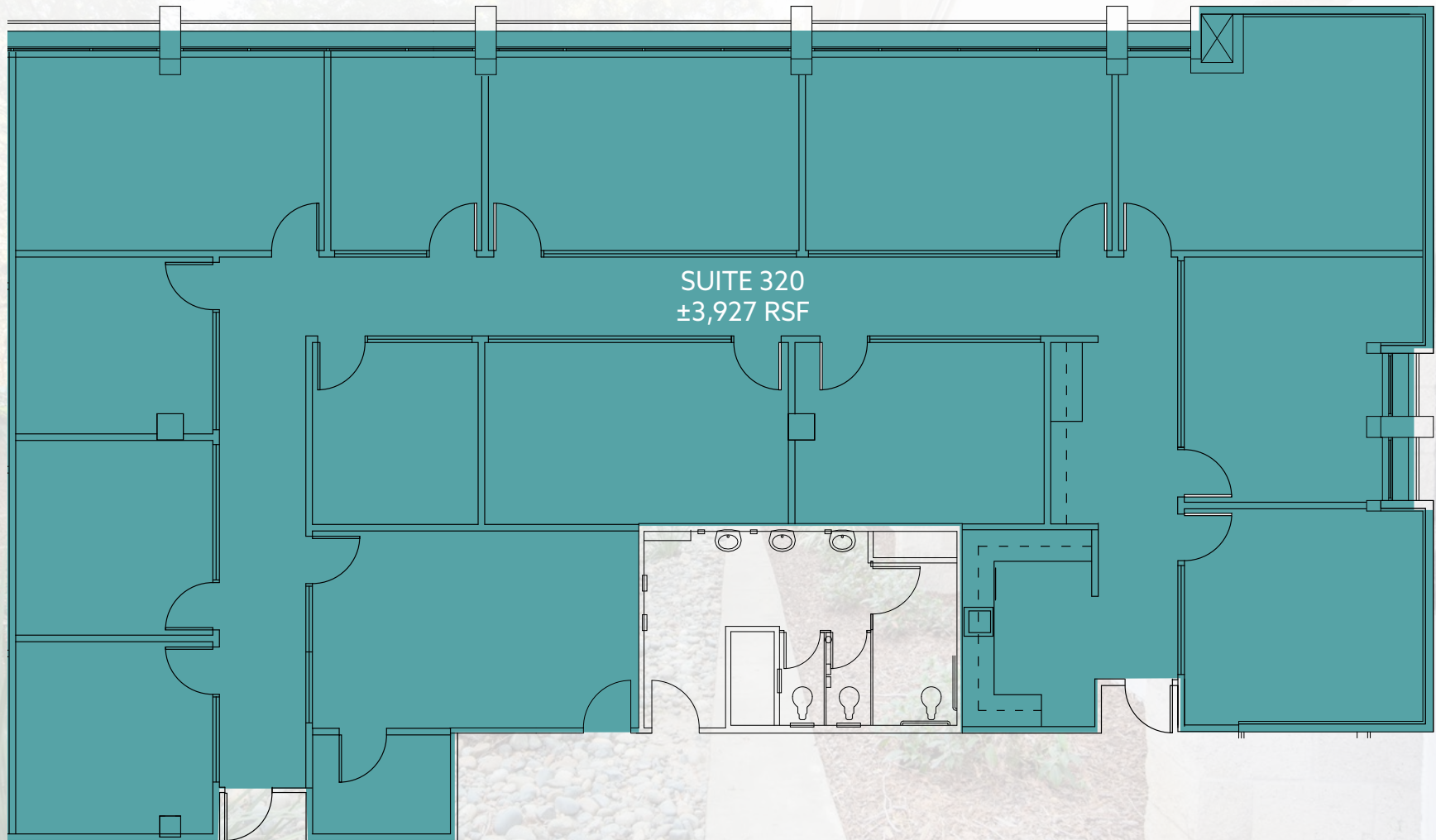
# SECOND FLOOR

SUITES 200/201 - ±5,000-24,503 RSF



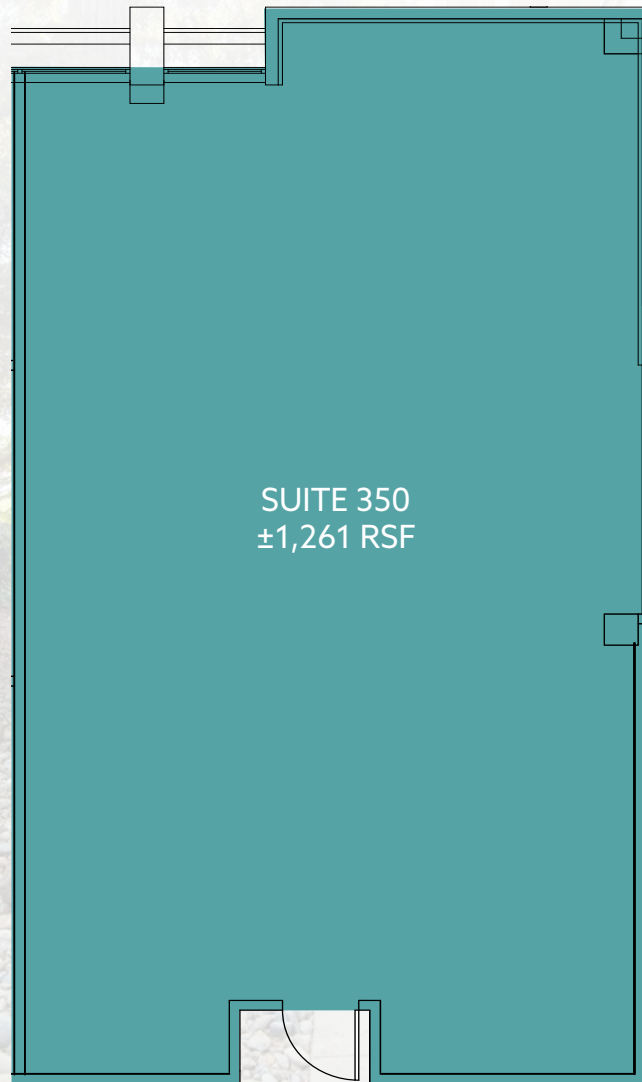
# THIRD FLOOR

SUITE 320 - ±3,927 RSF

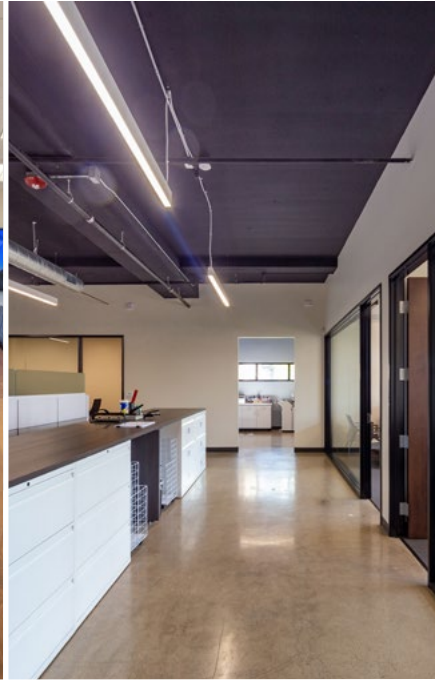


# THIRD FLOOR

SUITE 350 - ±1,261 RSF



# SUITE PHOTOS



# NEARBY AMENITIES



# 7919

## FOLSOM BOULEVARD

SACRAMENTO, CA

EXCLUSIVELY LISTED BY:

**TONY WHITTAKER**  
Senior Vice President  
+1 916.492.6914  
tony.whittaker@cbre.com  
Lic. 01780828

**NELLIE CRUZ**  
Vice President  
+1 916.492.6915  
nellie.cruz@cbre.com  
Lic. 02086140

**CBRE**

© 2025 CBRE, Inc. All rights reserved. This information has been obtained from sources believed reliable, but has not been verified for accuracy or completeness. You should conduct a careful, independent investigation of the property and verify all information. Any reliance on this information is solely at your own risk. CBRE and the CBRE logo are service marks of CBRE, Inc. All other marks displayed on this document are the property of their respective owners, and the use of such logos does not imply any affiliation with or endorsement of CBRE. Photos herein are the property of their respective owners. Use of these images without the express written consent of the owner is prohibited.