

24,310 SF FOR LEASE OR SALE

15502

MIDWAY ROAD

ADDISON, TEXAS 75001



DJ DRAPER

Vice President

Office: 214.307.4541

Cell: 731.819.1008

ddraper@stoicrep.com

CHAD ALBERT, SIOR

Founder & Managing Partner

Office: 214.307.4541

Cell: 214.287.4251

calbert@stoicrep.com



PROPERTY FEATURES



24,310 SF ON 1.08 ACRES



PROMINENT MIDWAY
ROAD FRONTAGE IN
ADDISON



3,750 SF OFFICE



FENCED PARKING



CLASS A FINISH



SPRINKLERED



THREE DOCK HIGH
DOORS (ONE RAMP)



ZONING PERMITS AUTO
RELATED USES



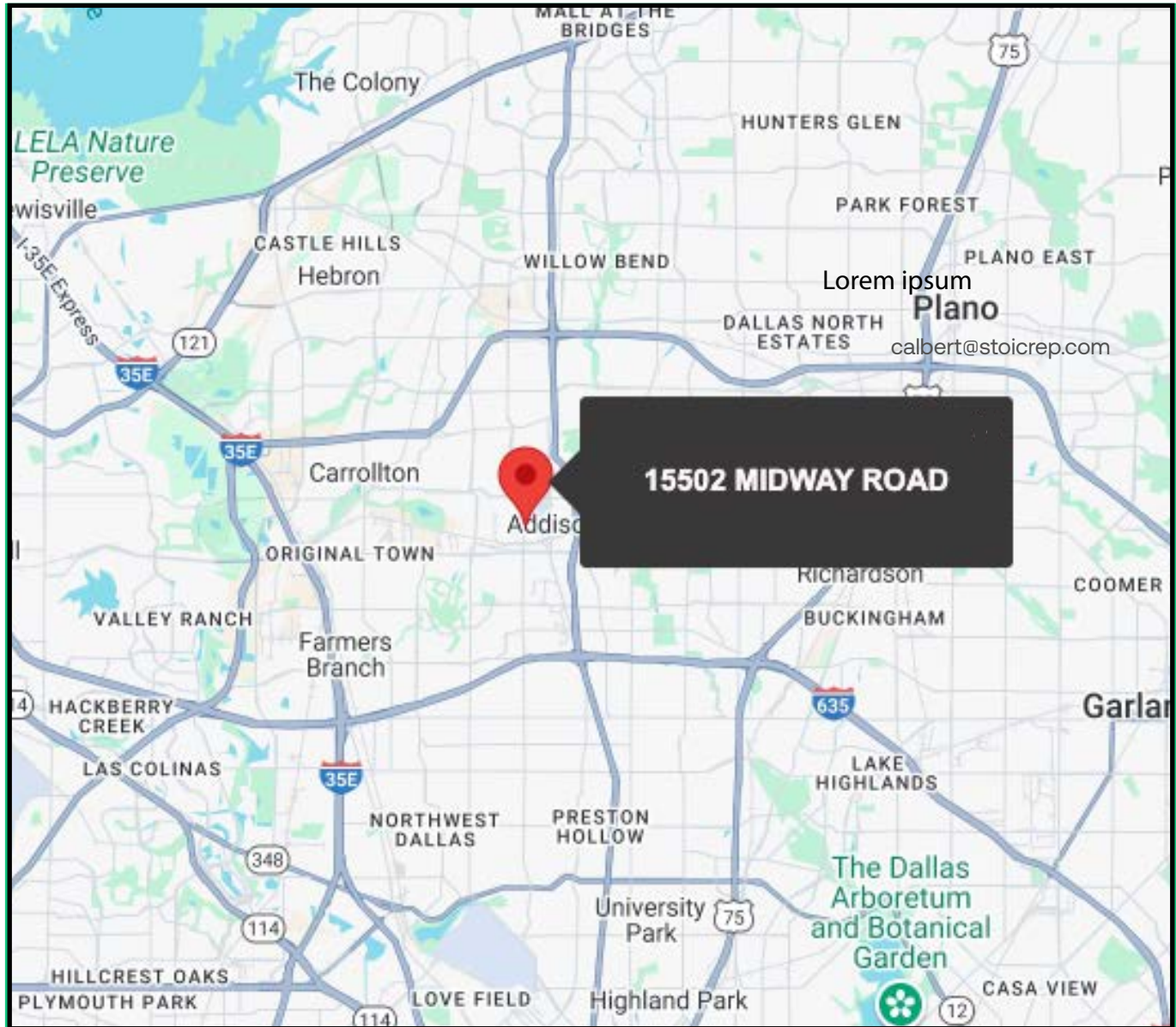
ONE GRADE LEVEL DOOR



18' - 22' CLEAR HEIGHT

PROPERTY + SURROUNDINGS

15502 MIDWAY ROAD, ADDISON, TEXAS 75001



DJ DRAPER

Vice President

Office: 214.307.4541

Cell: 731.819.1008

ddraper@stoicrep.com

CHAD ALBERT, SIOR

Founder & Managing Partner

Office: 214.307.4541

Cell: 214.287.4251

calbert@stoicrep.com

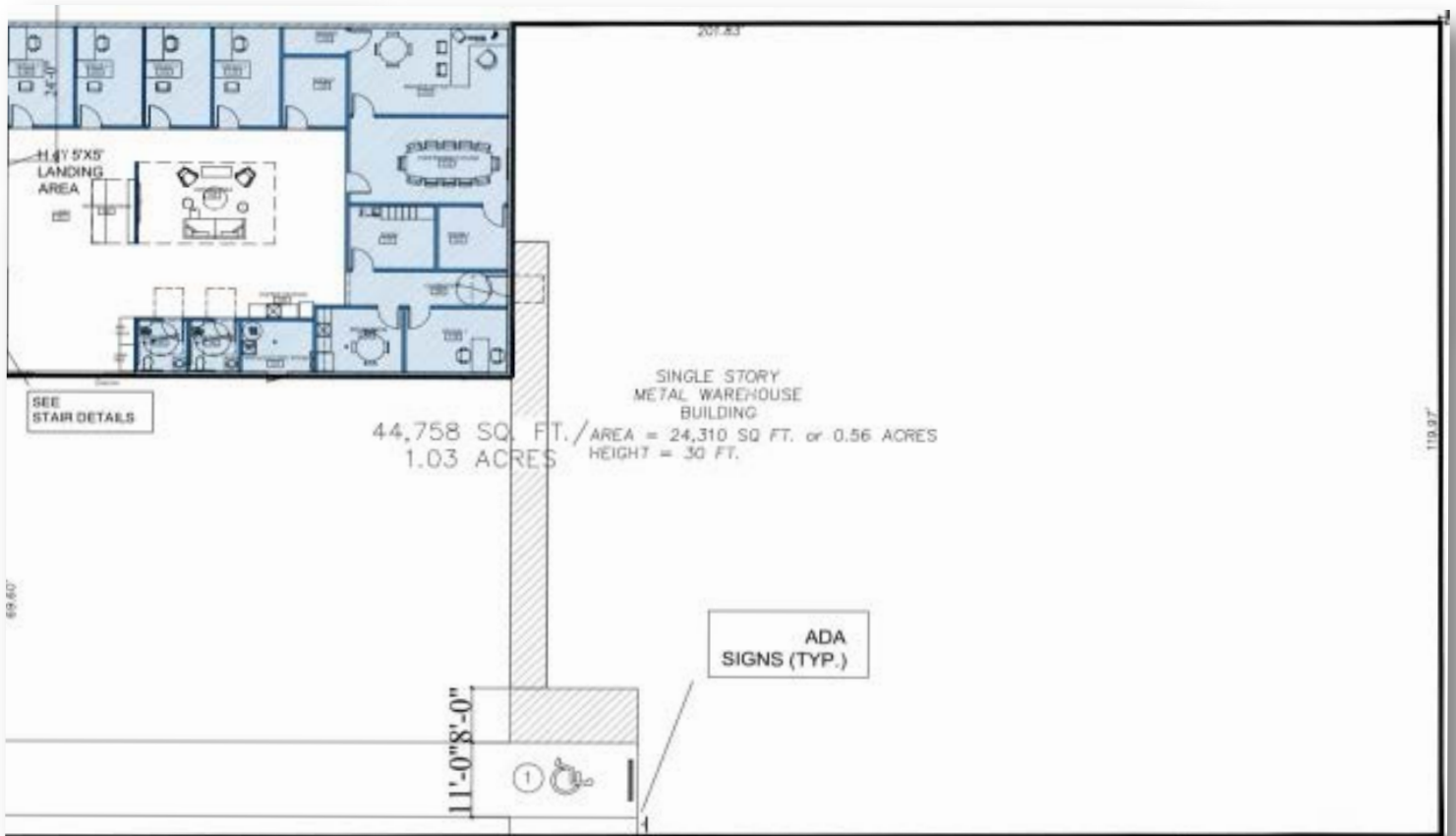


24,310 SF FOR LEASE OR SALE

15502

MIDWAY ROAD

ADDISON, TEXAS 75001



DJ DRAPER

Vice President

Office: 214.307.4541

Cell: 731.819.1008

ddraper@stoicrep.com

CHAD ALBERT, SIOR

Founder & Managing Partner

Office: 214.307.4541

Cell: 214.287.4251

calbert@stoicrep.com

STOIC
REAL ESTATE PARTNERS

24,310 SF FOR LEASE OR SALE

15502

MIDWAY ROAD

ADDISON, TEXAS 75001



DJ DRAPER

Vice President

Office: 214.307.4541

Cell: 731.819.1008

ddraper@stoicrep.com

CHAD ALBERT, SIOR

Founder & Managing Partner

Office: 214.307.4541

Cell: 214.287.4251

calbert@stoicrep.com

STOIC
REAL ESTATE PARTNERS