

# SOUTHWEST MEDICAL PLAZA I

7100 Oakmont Blvd.  
Fort Worth, TX 76132

Healthpeak® | **DOC**  
LISTED  
NYSE



Leasing Information:  
214.461.2383

**Peter Shaw**  
214.461.2302  
PShaw@lpc.com

**Douglas Maclay**  
214.461.2371  
dmaclay@lpc.com

**Elizabeth Madden**  
214.461.2366  
emadden@lpc.com

**Banks Newton**  
214.461.2388  
bnewton@lpc.com

# Lincoln

Lincoln Property Company  
8140 Walnut Hill Lane Suite 700  
Dallas, TX 75231

[www.lpc.com](http://www.lpc.com)

# SOUTHWEST MEDICAL PLAZA I

# Outpatient Medical For Lease

7100 Oakmont Blvd. | Fort Worth, TX 76132



## Property Overview

This off-campus Outpatient Medical Building is ideally positioned along the Chisholm Trail growth corridor. Residing minutes away from Texas Health Harris Methodist Southwest Hospital, TCU, and the Fort Worth Medical District, Southwest Medical Plaza I offers convenience for patients and staff.

## Property Highlights

- Immediate access to the Chisholm Trail tollway and southwest Fort Worth growth corridor
- Convenient access to Texas Health Harris Methodist Southwest Hospital, Fort Worth Medical District, and TCU
- No Use Restrictions
- Free Parking for Patients & Staff
- Adjacent to Baylor Scott & White Surgicare

Availabilities	SF
102	1,916 SF
104	2,566 SF
204	1,752 SF
207	2,948 SF

**Peter Shaw**

214.461.2302  
PShaw@lpc.com

**Douglas Maclay**

214.461.2371  
dmaclay@lpc.com

**Elizabeth Madden**

214.461.2366  
emadden@lpc.com

**Banks Newton**

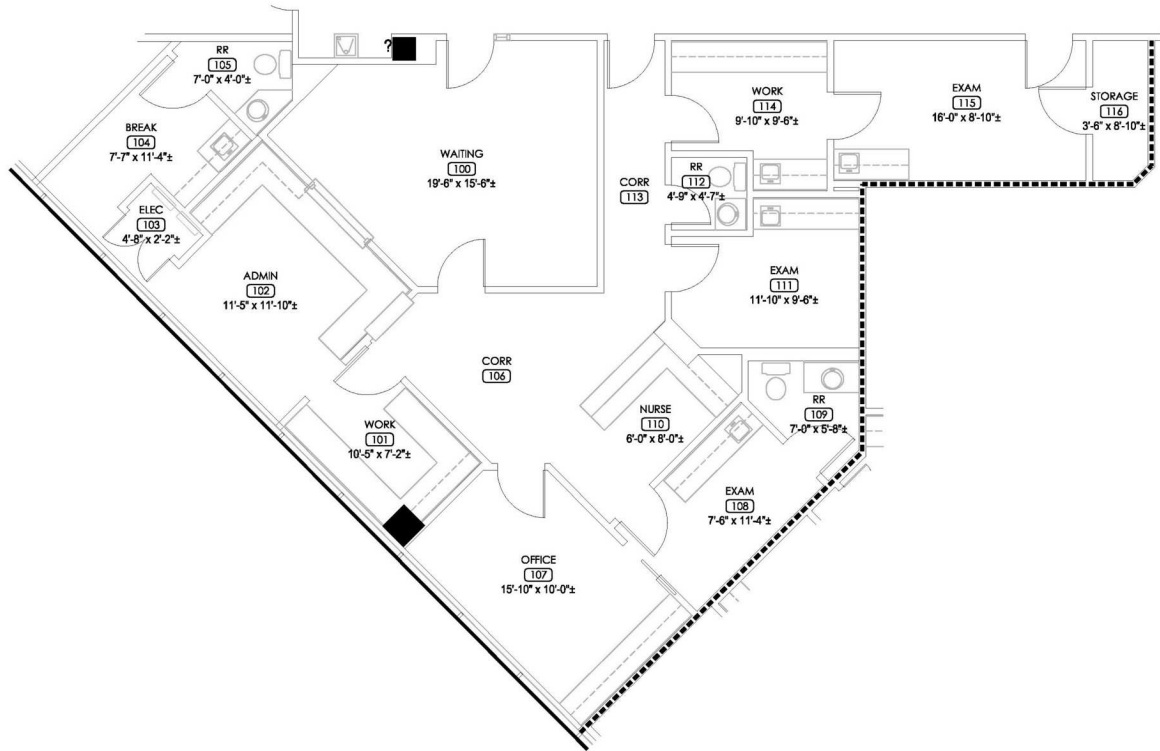
214.461.2388  
bnewton@lpc.com

**Lincoln**

# SOUTHWEST MEDICAL PLAZA I

Suite 102

7100 Oakmont Blvd. | Fort Worth, TX 76132



**Suite**

**Size**

102

1,916 SF

**Peter Shaw**

214.461.2302  
Pshaw@lpc.com

**Douglas Maclay**

214.461.2371  
dmaclay@lpc.com

**Elizabeth Madden**

214.461.2366  
emadden@lpc.com

**Banks Newton**

214.461.2388  
bnewton@lpc.com

**Lincoln**

# SOUTHWEST MEDICAL PLAZA I

Suite 104

7100 Oakmont Blvd. | Fort Worth, TX 76132



Suite	Size
104	2,566 SF

**Peter Shaw**

214.461.2302  
Pshaw@lpc.com

**Douglas Maclay**

214.461.2371  
dmaclay@lpc.com

**Elizabeth Madden**

214.461.2366  
emadden@lpc.com

**Banks Newton**

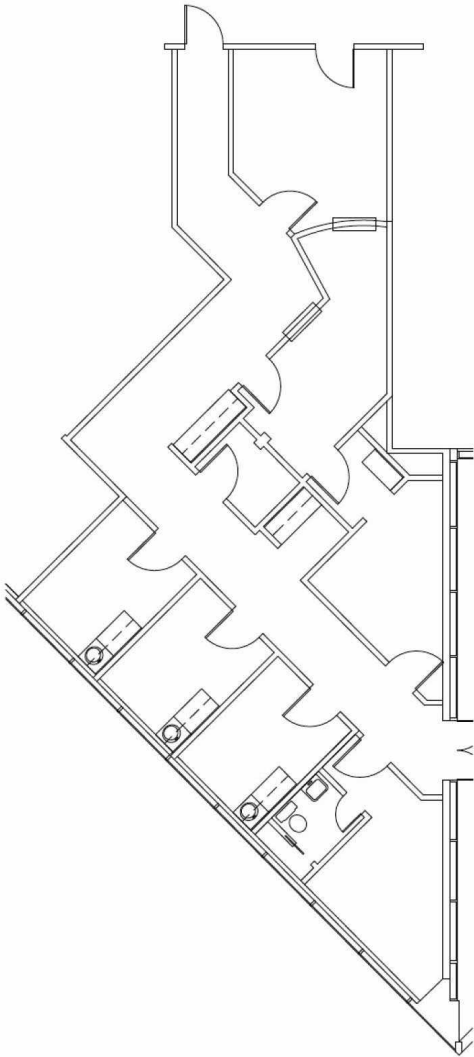
214.461.2388  
bnewton@lpc.com

**Lincoln**

# SOUTHWEST MEDICAL PLAZA I

Suite 204

7100 Oakmont Blvd. | Fort Worth, TX 76132



Suite	Size
204	1,752 SF

**Peter Shaw**

214.461.2302  
PShaw@lpc.com

**Douglas Maclay**

214.461.2371  
dmaclay@lpc.com

**Elizabeth Madden**

214.461.2366  
emadden@lpc.com

**Banks Newton**

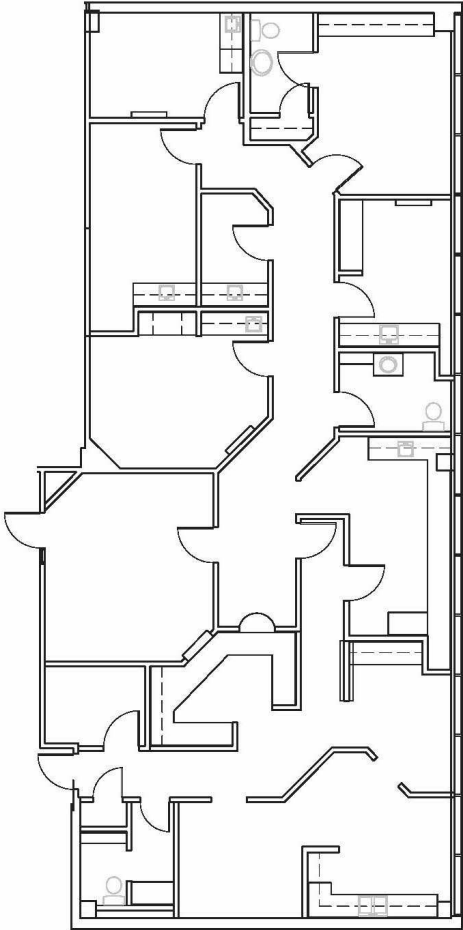
214.461.2388  
bnewton@lpc.com

**Lincoln**

# SOUTHWEST MEDICAL PLAZA I

Suite 207

7100 Oakmont Blvd. | Fort Worth, TX 76132



Suite	Size
207	2,948 SF

**Peter Shaw**

214.461.2302  
PShaw@lpc.com

**Douglas Maclay**

214.461.2371  
dmaclay@lpc.com

**Elizabeth Madden**

214.461.2366  
emadden@lpc.com

**Banks Newton**

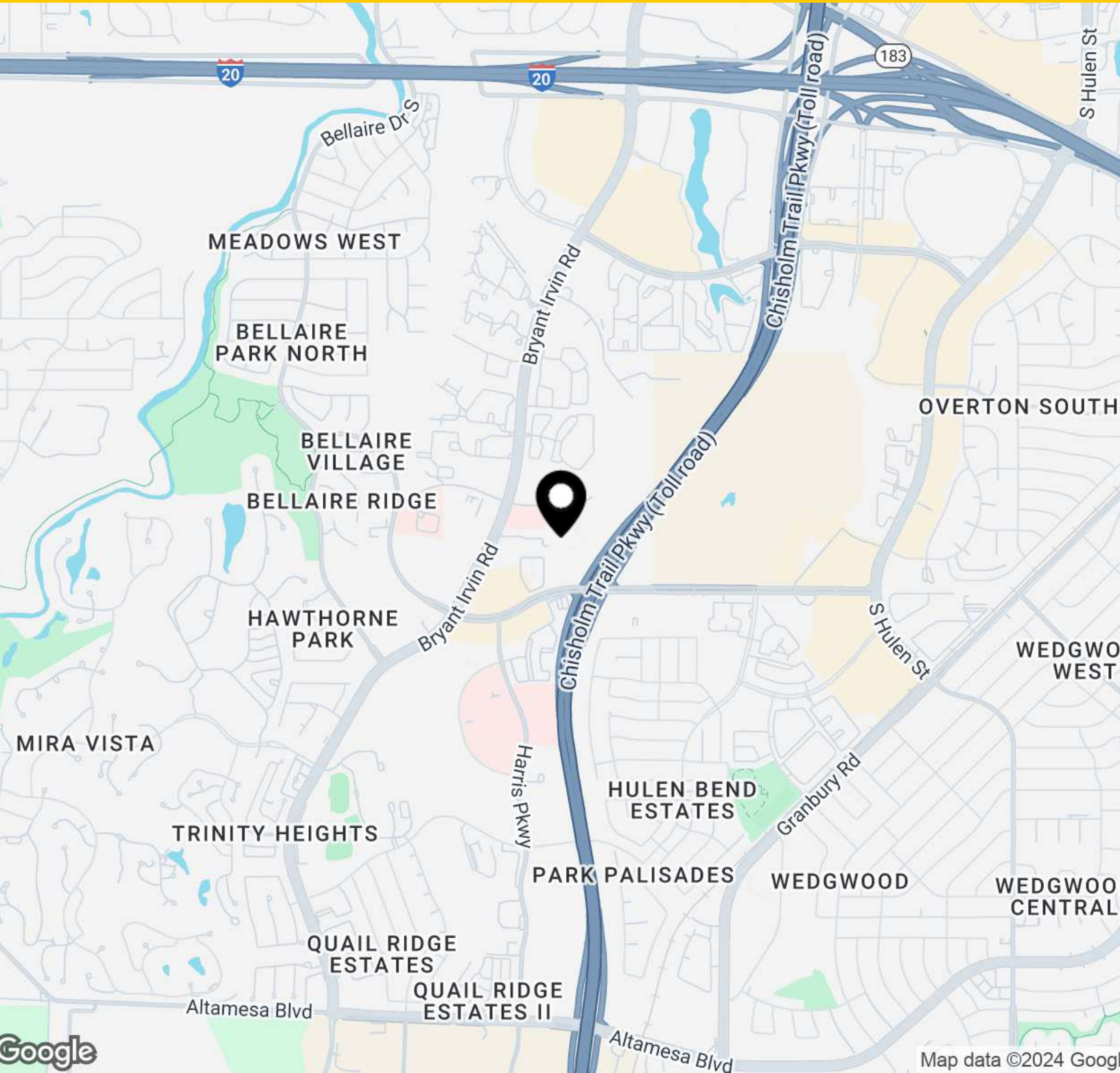
214.461.2388  
bnewton@lpc.com

**Lincoln**

# SOUTHWEST MEDICAL PLAZA I

## Location Map

7100 Oakmont Blvd. | Fort Worth, TX 76132



**Peter Shaw**

214.461.2302  
Pshaw@lpc.com

**Douglas Maclay**

214.461.2371  
dmaclay@lpc.com

**Elizabeth Madden**

214.461.2366  
emadden@lpc.com

**Banks Newton**

214.461.2388  
bnewton@lpc.com

# Lincoln



# SOUTHWEST MEDICAL PLAZA I

Healthpeak® | **DOC**  
**LISTE**  
**NYSE**

7100 Oakmont Blvd.  
Fort Worth, TX 76132

Leasing Information:  
214.461.2383

**Peter Shaw**  
214.461.2302  
PShaw@lpc.com

**Douglas Maclay**  
214.461.2371  
dmaclay@lpc.com

**Elizabeth Madden**  
214.461.2366  
emadden@lpc.com

**Banks Newton**  
214.461.2388  
bnewton@lpc.com

# Lincoln

Lincoln Property Company  
8140 Walnut Hill Lane Suite 700  
Dallas, TX 75231

[www.lpc.com](http://www.lpc.com)