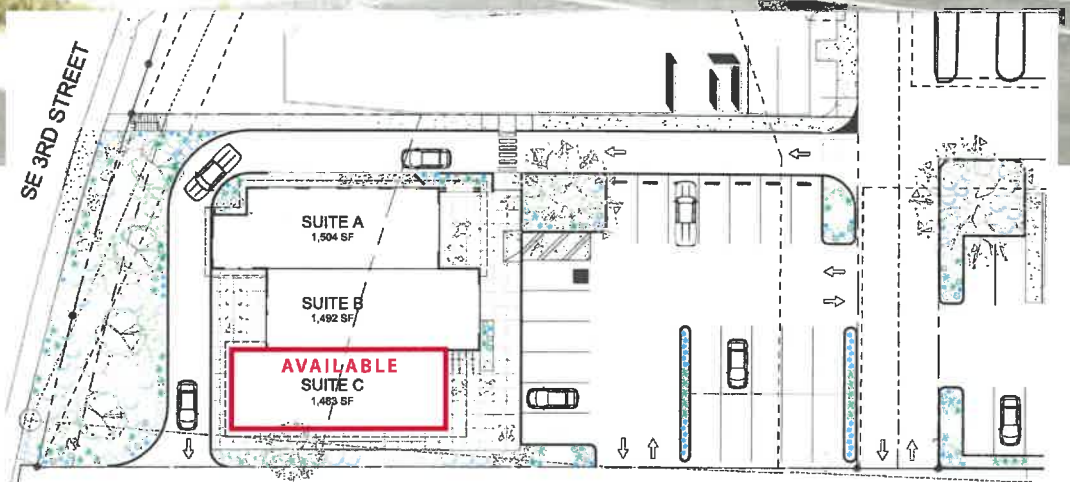


# LEASE SPACE AVAILABLE

1025 SE Cleveland Square Loop, Bend, Oregon



**COMING**  
SUMMER OR  
FALL 2025



**Three Retail Spaces with One Drive-Thru.**

**Located just north of Reed Market with frontage on 3rd Street.**

Act fast, only one Suite left! Suites A & B have leases in place with The Human Bean Coffee Store and Avis Budget Rental Cars

*Contact Broker for more information*



**COLDWELL BANKER**  
**COMMERCIAL**

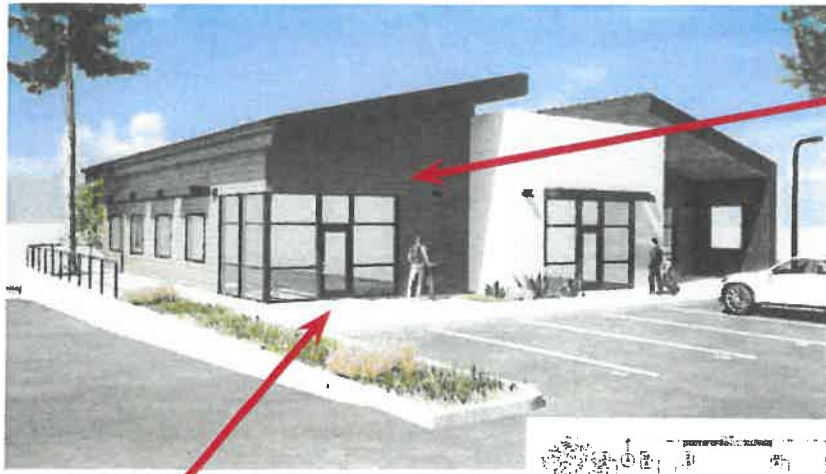
486 Southwest Bluff Drive, Bend, OR 97702 | (541) 382-4123

**Call Paula Van Vleck, Broker**

**541-382-4123 | 541-280-7774**

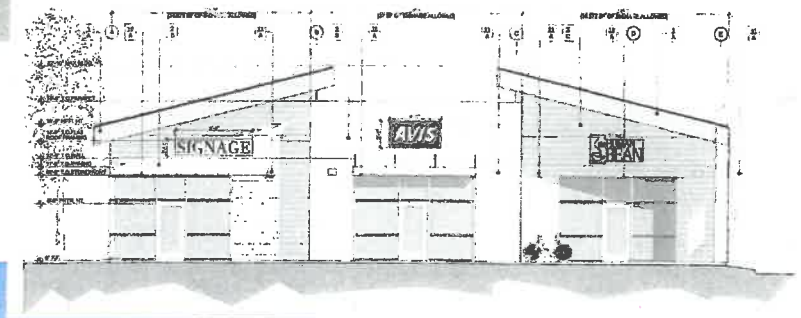
**paulavanvleck@cbbain.com**

*Licensed in the State of Oregon*



*Suite C*

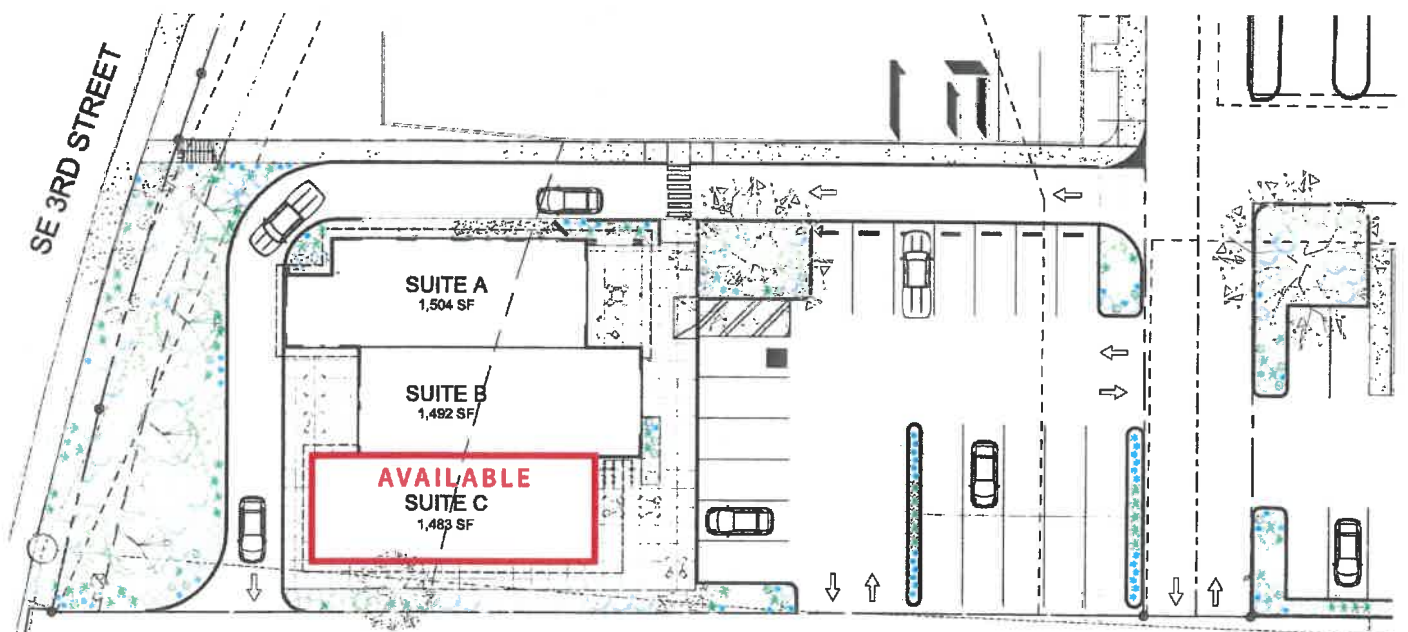
*Parking Lot side*



*Suite C*



*3rd Street side*



**Coldwell Banker - Commercial**

"Broker is licensed in the State of Oregon. The information provided herein has been furnished by sources we deem to be reliable and for which we assume no liability. This is an exclusive listing. The information contained herein is provided in confidence with the understanding that all negotiations pertaining to this property will be handled through Coldwell Banker - Commercial. All measurements are approximate"