

2436 W COAST HWY

NEWPORT BEACH, CA

2436
WEST COAS OFFICE

101	TIMELESS SKIN CARE
102	STANDARD AEROSPACE CORPORATION
103	NEWPORT BEACH HEALTHY LIVING
104	THE VINTAGE HAIR SALON
105	CHRISTIAN SCIENCE READING ROOM
106	LITHOLOGIE CO. (ARTS & CRAFTS)
107	DR. LINDA HOPKINS
201	SIGNATURE INS. & ESCP CORP. RESOURCES
202	TRAKER DEVELOPMENT, LLC
203	ROM IMPORTS, LLC
204	DIAZ-ARIAS GROUP / GAOF S.L
205	MICAMP MERCHANT SERVICES
207	PETTINGILL YACHTS

NOW LEASING

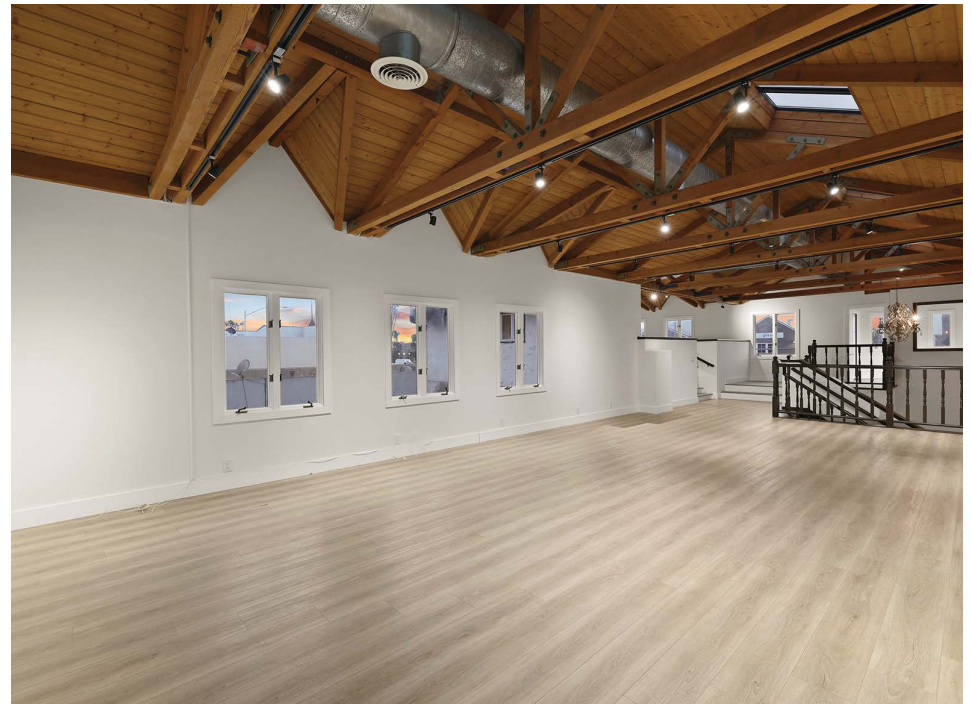
Retail / Office Space

RW REDWOOD
WEST

WELCOME TO

2436 W COAST HIGHWAY

- Located in the heart of Newport Beach's Mariner's Mile
- Newly renovated office space with exposed ceilings, skylights and wood floors
- Exclusive outdoor balconies with Newport Bay views
- Free surface parking available
- Responsive local ownership and property management
- Abundant food and retail options within walking distance





FASHION ISLAND

BACK BAY

BALBOA ISLAND

LIDO ISLAND

2436 W COAST HWY

BILLY'S AT THE BEACH

LIDO MARINA VILLAGE

LIDO VILLAS

LIDO HOUSE HOTEL



BILLY'S AT THE BEACH



TAVERN HOUSE KITCHEN + BAR

NEIGHBORHOOD HOT SPOTS



C'EST SI BON BAKERY



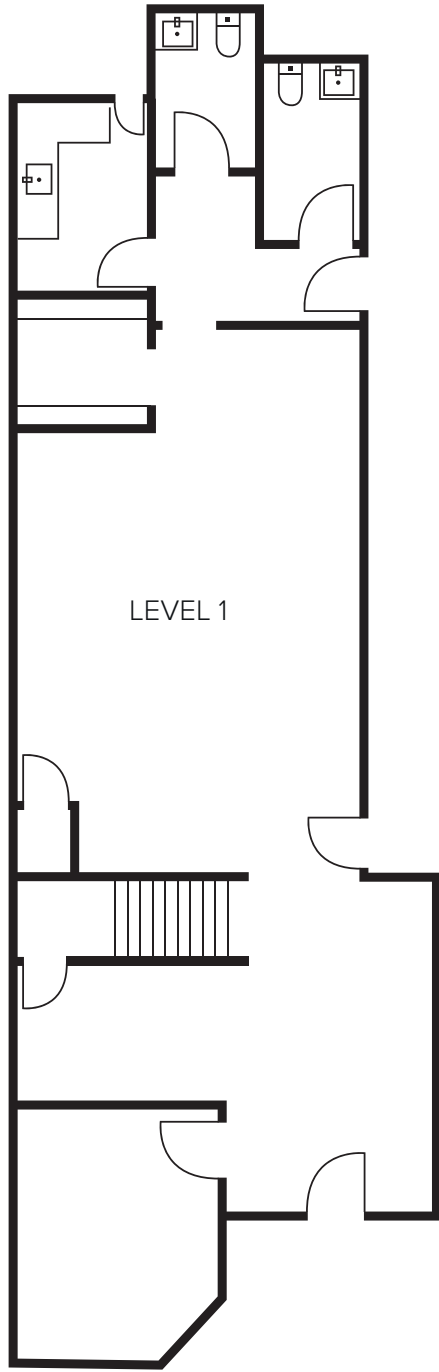
LIDO MARINA VILLAGE



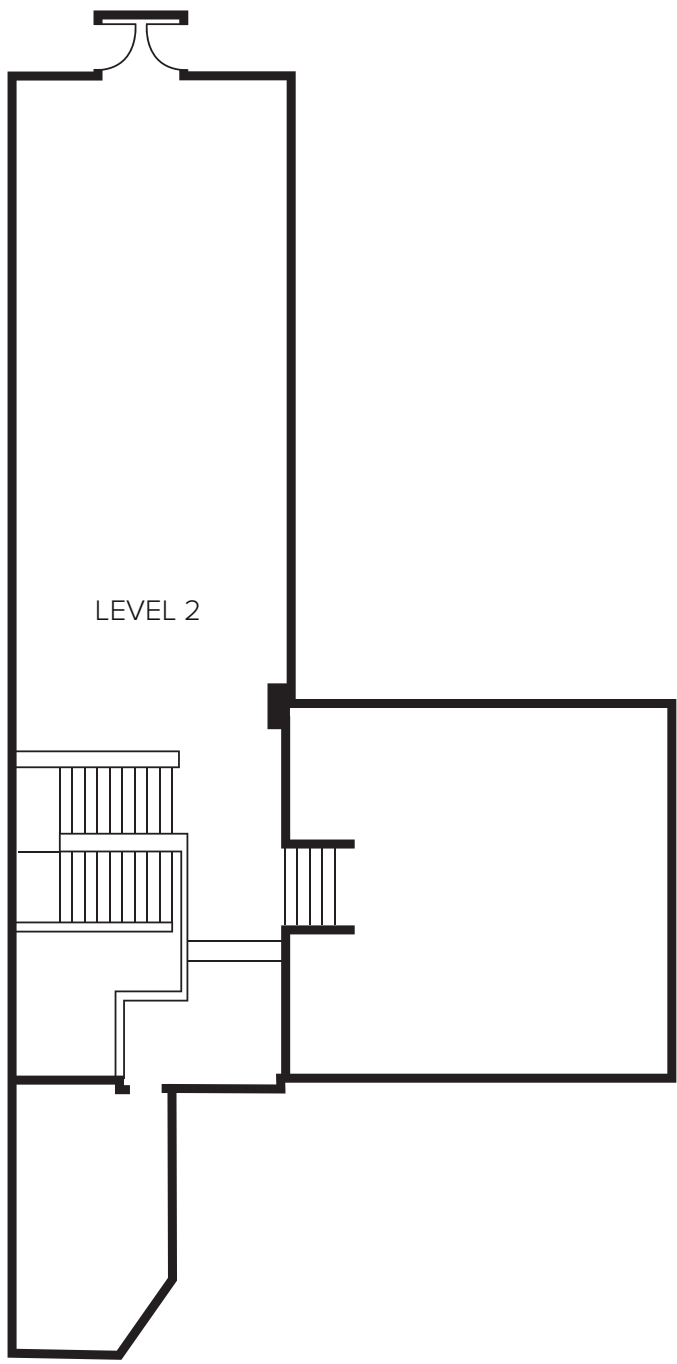
LOUIE'S BY THE BAY

Suite 101

+/- 3,304 SF



LEVEL 1



LEVEL 2



2436 W COAST HWY

NEWPORT BEACH, CA

For more information, please contact:

John Pomer

949.945.2649

john@redwoodwest.com

Lic. #01440689

Ben Gott

949.945.2648

ben@redwoodwest.com

Lic. #01724507

Christian Heffelman

949.945.2645

christian@redwoodwest.com

Lic. #02101426

Julie Johnson

949.945.2644

julie@redwoodwest.com

Lic. #02156626



LEASED BY:

RW | REDWOOD
WEST

The information contained in this document has been obtained from sources believed reliable. While Redwood West does not doubt its accuracy, Redwood West has not verified it and makes no guarantee, warranty or representation about it. It is your responsibility to independently confirm its accuracy and completeness. You and your advisors should conduct a careful, independent investigation of the property to determine your satisfaction to the suitability of the property for your needs.