

37,812 SF AVAILABLE FOR SALE

1905 W FIELD COURT

LAKE FOREST, IL 60045



Sean Kropke
+1 847 361 9720
sean.kropke@cushwake.com



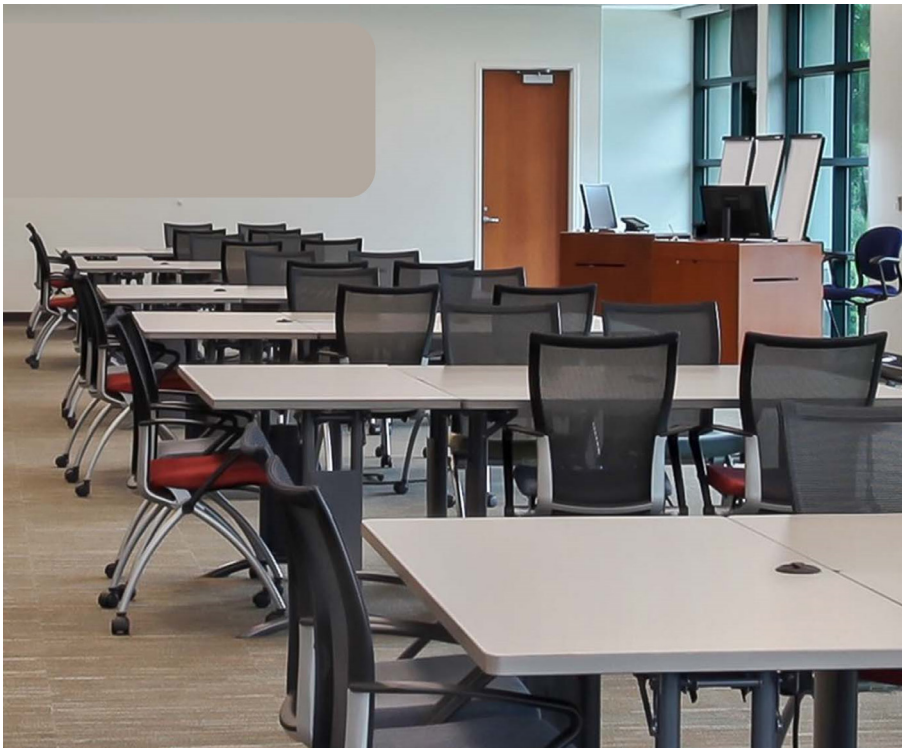
BUILDING HIGHLIGHTS

37,812 SF
AVAILABLE

3.04 / 1,000
PARKING
RATIO

121,462 SF
LOT SIZE

155
SURFACE PARKING
SPACES



BUILDING PHOTOS



BUILDING PHOTOS

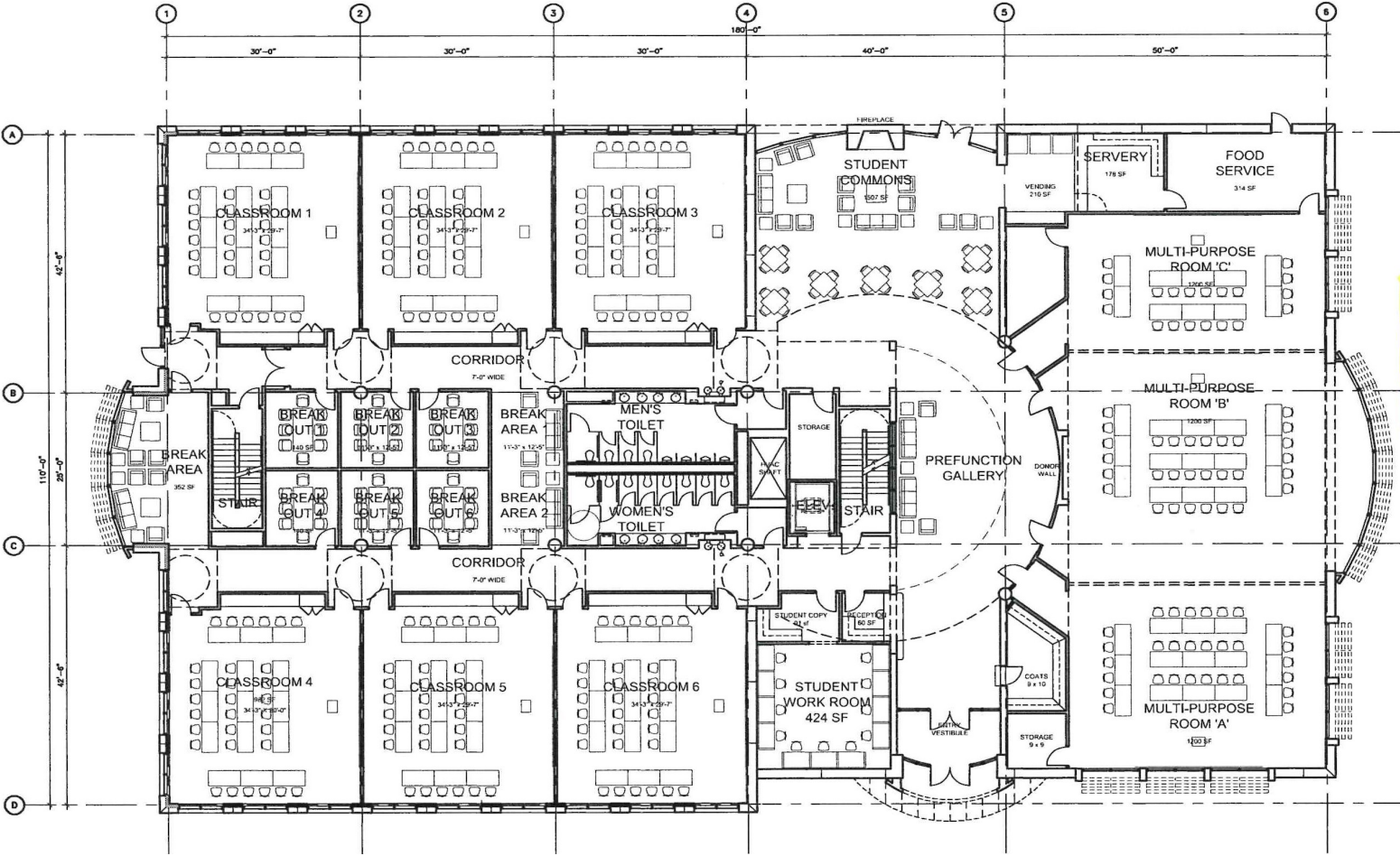


AERIAL MAP

1. Abbott
2. ICU Medical
3. Trustmark
4. Pfizer
5. AbbVie
6. Consumers Credit Union HQ
7. Pfizer
8. The Forester (Hyatt Place)
9. One & Two Conway Park
10. 1955 W Field Court
11. 1925 W Field Ct
12. Reynolds/Pactiv
13. Hilton Garden Inn
14. Brunswick Corporation

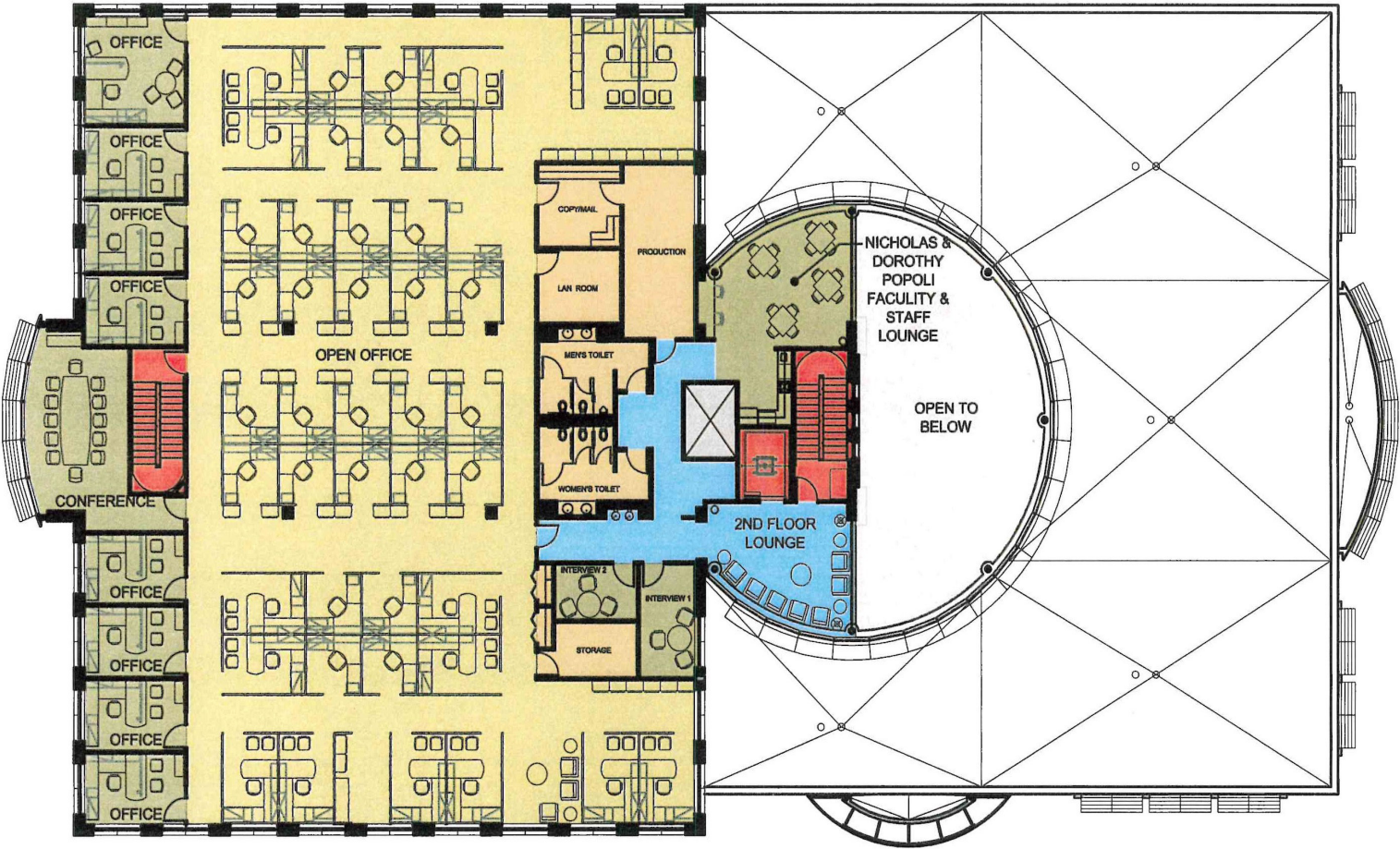


FLOOR PLANS



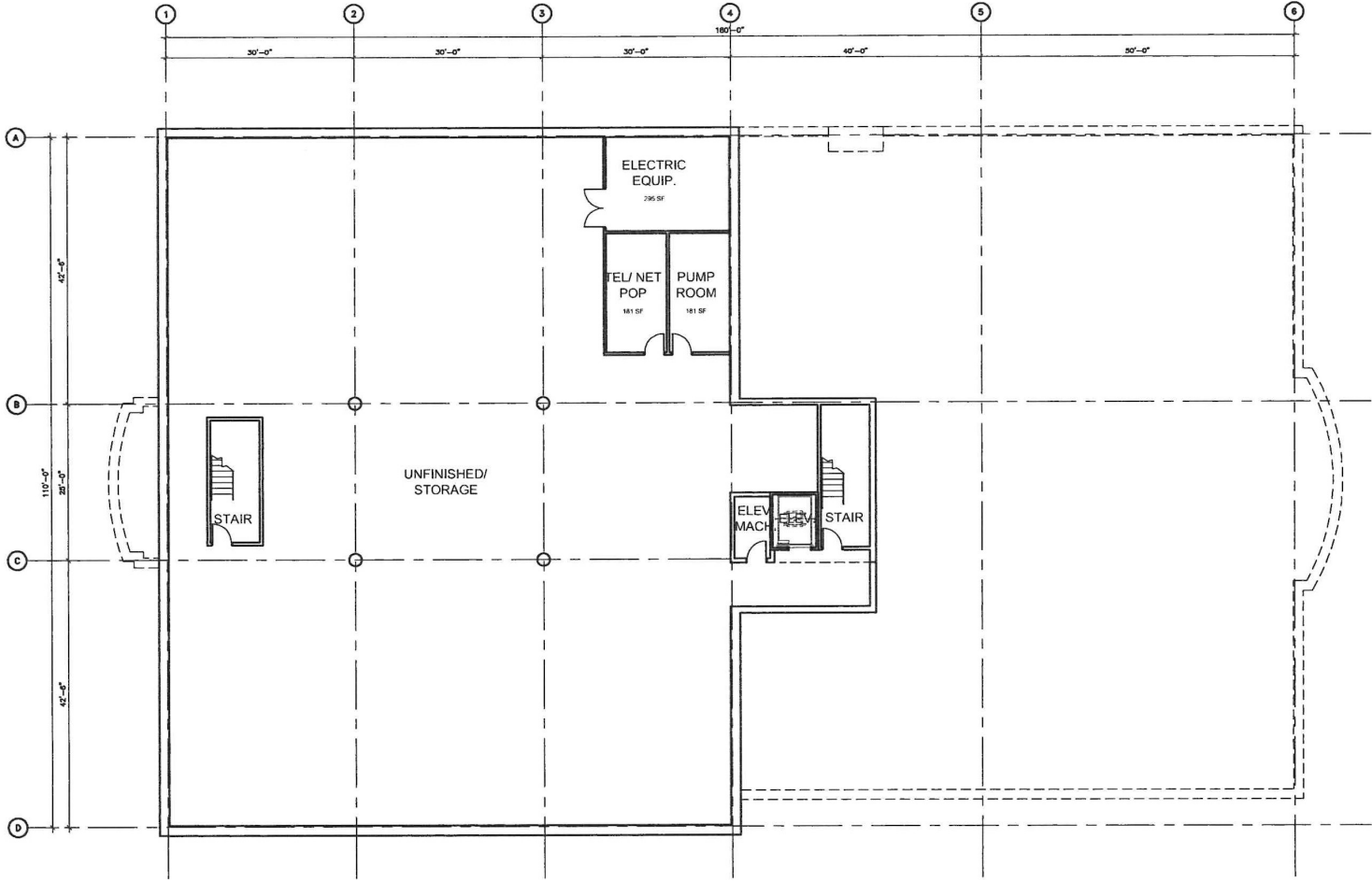
FIRST FLOOR

FLOOR PLANS



SECOND FLOOR

FLOOR PLANS



LOWER LEVEL

FOR MORE INFORMATION, PLEASE CONTACT:

Sean Kropke
+1 847 361 9720
sean.kropke@cushwake.com



©2023 Cushman & Wakefield. All rights reserved. The information contained in this communication is strictly confidential. This information has been obtained from sources believed to be reliable but has not been verified. NO WARRANTY OR REPRESENTATION, EXPRESS OR IMPLIED, IS MADE AS TO THE CONDITION OF THE PROPERTY (OR PROPERTIES) REFERENCED HEREIN OR AS TO THE ACCURACY OR COMPLETENESS OF THE INFORMATION CONTAINED HEREIN, AND SAME IS SUBMITTED SUBJECT TO ERRORS, OMISSIONS, CHANGE OF PRICE, RENTAL OR OTHER CONDITIONS, WITHDRAWAL WITHOUT NOTICE, AND TO ANY SPECIAL LISTING CONDITIONS IMPOSED BY THE PROPERTY OWNER(S). ANY PROJECTIONS, OPINIONS OR ESTIMATES ARE SUBJECT TO UNCERTAINTY AND DO NOT SIGNIFY CURRENT OR FUTURE PROPERTY PERFORMANCE.

