

1099

Finch Drive | Sarnia

FOR SALE +/- 0.93 Acres



Commercial Land for Sale in Sarnia

CBRE

The Offering

Approximately 1 acre plot of commercial land available for sale - 1099 Finch Drive, Sarnia.

Located in Sarnia, in a prime retail market, the land is shadowed by Metro, The Brick, Staples, Dollar Tree, and may more national tenants. The land is strategically located across the street from Lambton Mall.

Suitable for medical, dental, retail, restaurants, and other services.

Property Details



+/- 0.93 Developable Acres
LAND SIZE



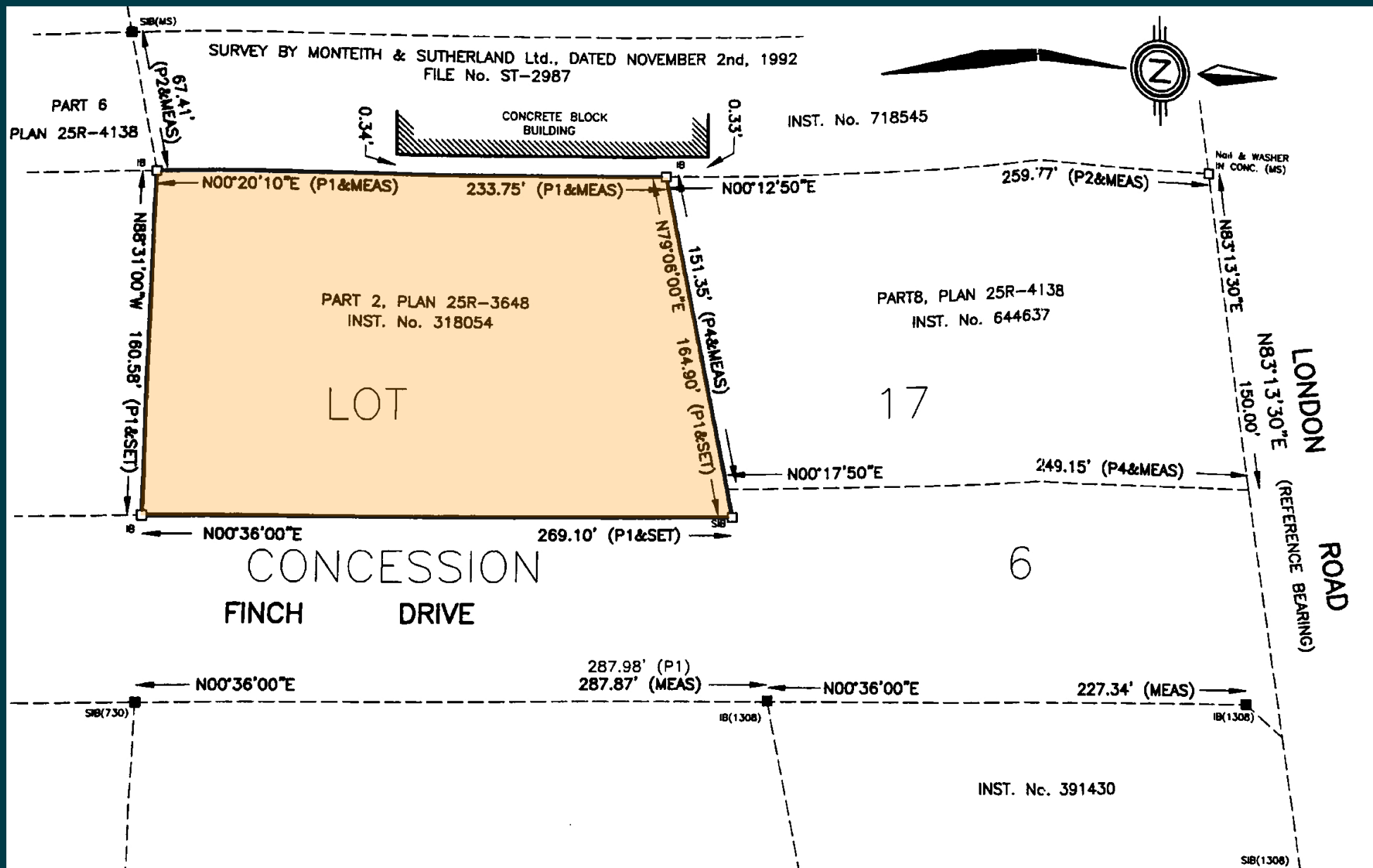
Contact Listing Agent
ASKING PRICE



Contact Listing Agent
ANNUAL TAXES



Site Survey



Zoning and Permitted Uses

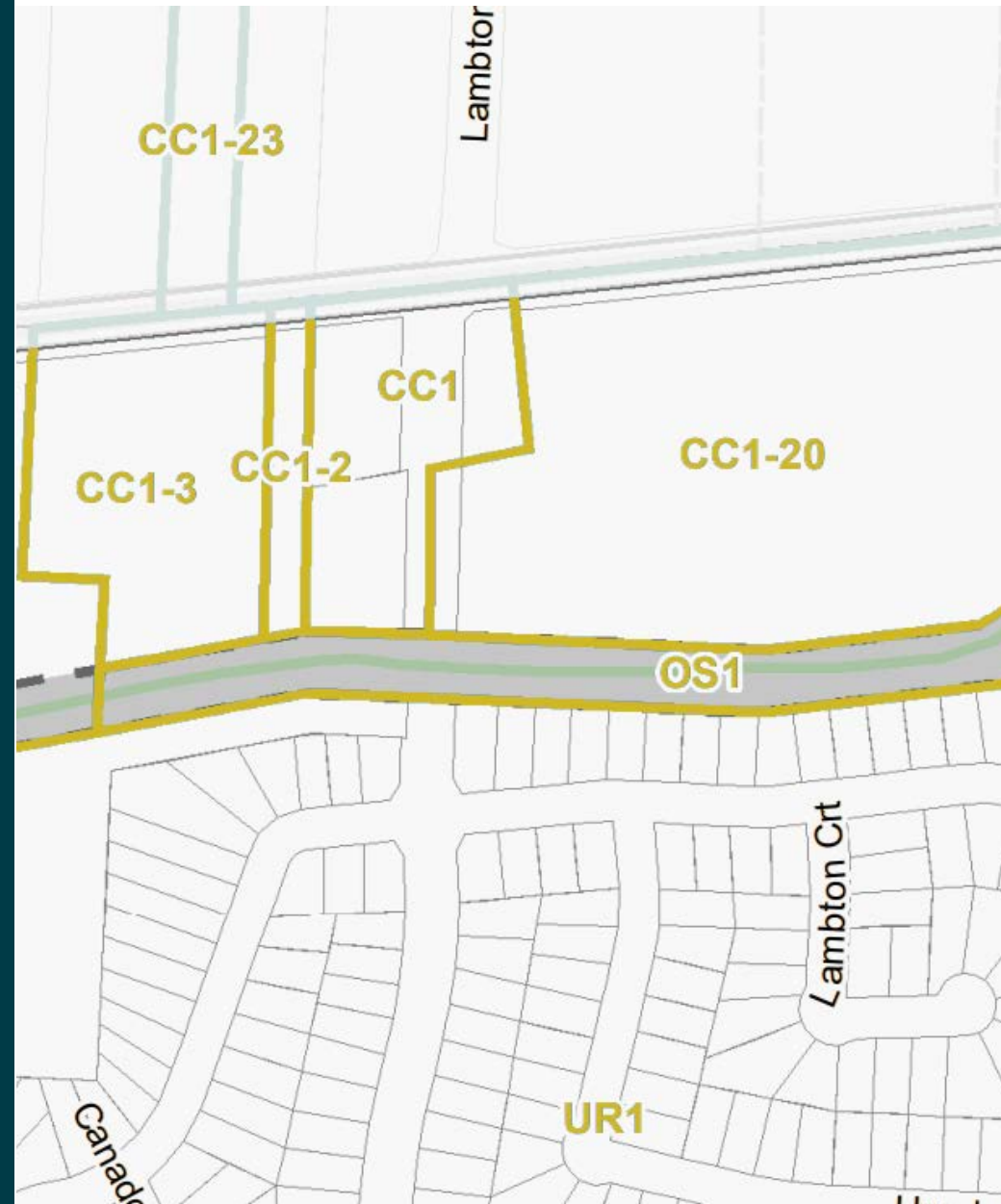
SARNIA ZONING BY LAW - CC1 (COMMERCIAL CENTER 1 ZONE)

The following uses are included but not limited to by Zoning By-Law UR1 :

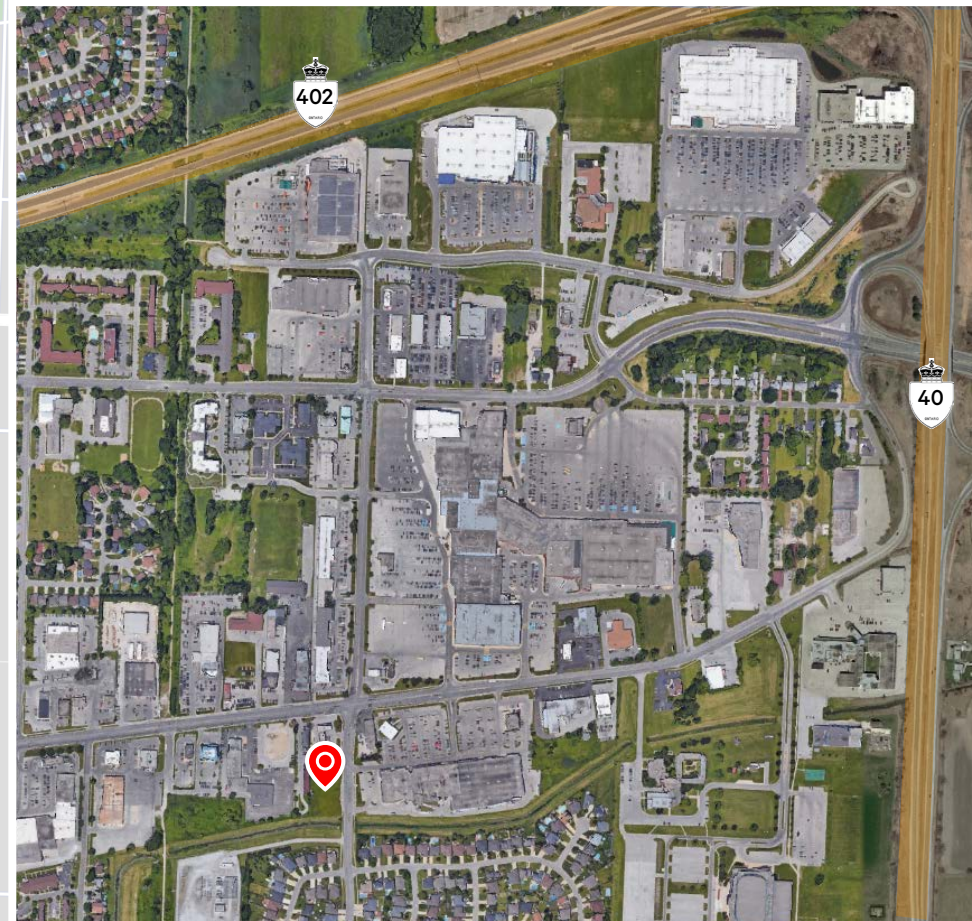
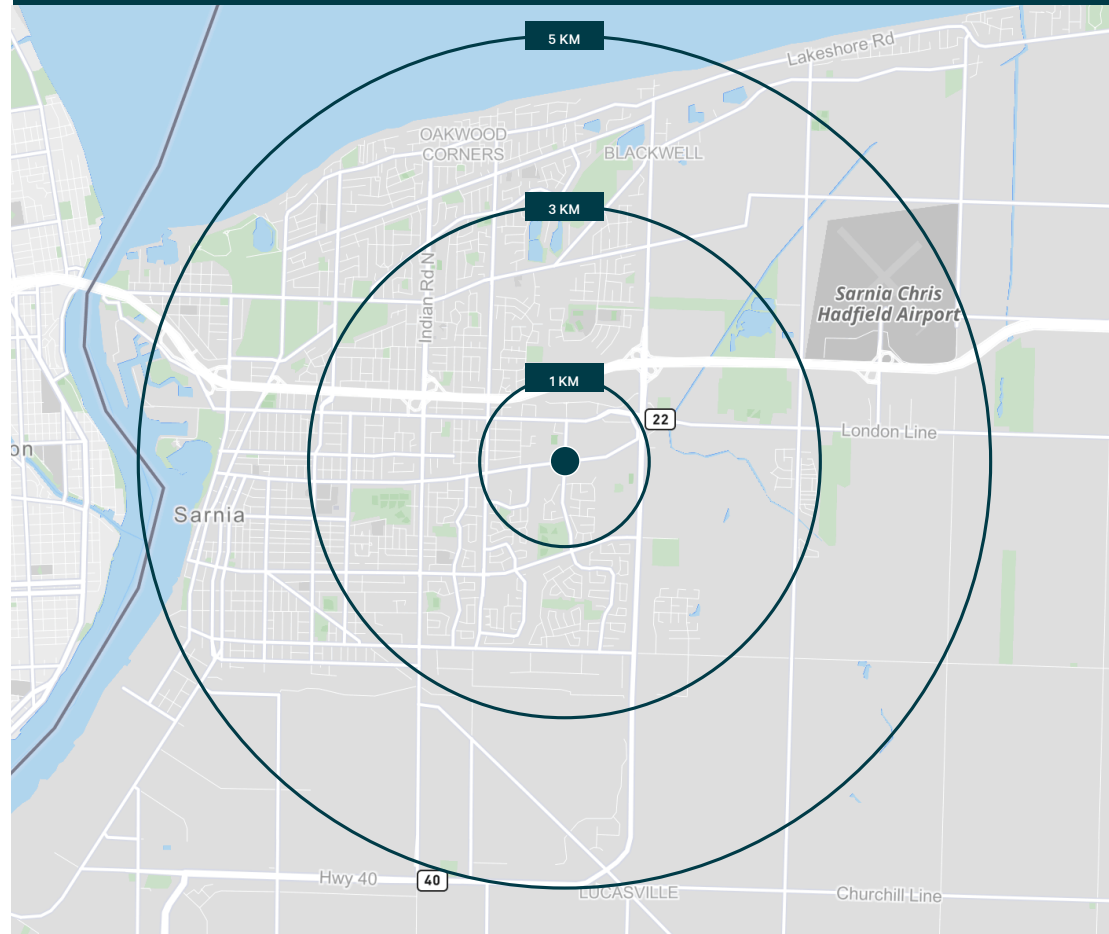
- Accessory uses and buildings
- Ambulance dispatch facilities
- Animal hospitals
- Auditoriums
- Automobile service stations
- Automobile washing establishments
- Automobile sales establishments
- Automobile repair establishments
- Bakeries
- Bake shops
- Bingo halls
- Building supply establishments
- Bulk retail sales establishments
- Bulk sales establishments
- Bus depots
- Call centres
- Colleges and universities
- Commercial schools
- Commercial recreation establishments
- Community centres
- Convenience stores
- Convention facilities
- Day nurseries
- Day care centres
- Dry cleaning establishments
- Financial institutions
- Flea markets
- Gas bars
- Hotels and motels
- Laboratories
- Labour union halls
- Laundromats
- Libraries
- Medical clinics / centres
- Minor institutions
- Museums
- Night clubs
- Nursery and garden centres
- Offices
- Payday loan establishments
- Personal service establishments
- Pharmacies
- Place of Worship
- Public halls
- Repair and rental establishments
- Restaurants
- Retail establishments, including shopping centres and department stores
- Service establishments
- Social and service clubs
- Studios
- Theatres
- Wholesale establishments

CLICK TO VIEW
CC1
(ZONING BY-LAW)

CLICK TO VIEW
SARNIA
ZONING DEFINITIONS



Demographics



Total Population 2024



Population Growth
2019-2024



Daytime Population 2024



Household Income 2024

1 KM

3,746

0.9%

5,539

\$ 110,918

3 KM

38,274

4.7%

40,021

\$ 110,402

5 KM

68,929

3.9%

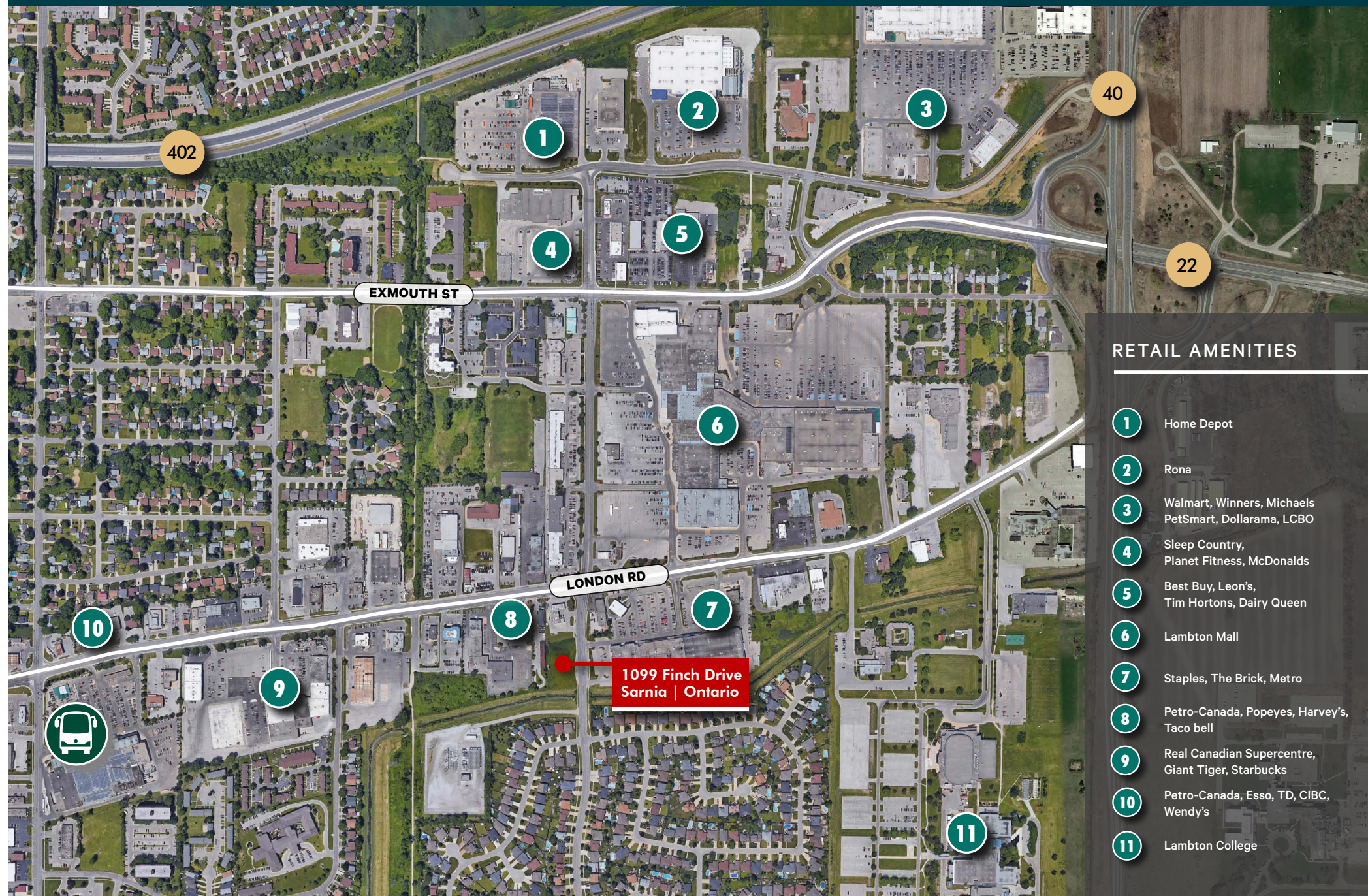
72,150

\$ 107,968



5 minutes away
from HWY 402
and HWY 40

Location and Amenities



RETAIL AMENITIES

- 1 Home Depot
- 2 Rona
- 3 Walmart, Winners, Michaels, PetSmart, Dollarama, LCBO
- 4 Sleep Country, Planet Fitness, McDonalds
- 5 Best Buy, Leon's, Tim Hortons, Dairy Queen
- 6 Lambton Mall
- 7 Staples, The Brick, Metro
- 8 Petro-Canada, Popeyes, Harvey's, Taco bell
- 9 Real Canadian Supercentre, Giant Tiger, Starbucks
- 10 Petro-Canada, Esso, TD, CIBC, Wendy's
- 11 Lambton College

1099

Finch Drive | Sarnia

FOR SALE +/- 0.93 Acres

FOR MORE INFORMATION, PLEASE CONTACT:

Adam Occhipinti*

Vice President

416 798 6265

adam.occhipinti@cbre.com

Matthew Pieszchala*

Vice President

905 234 0376

matthew.pieszchala@cbre.com

Karlyn Knafo*

Associate Vice President

905 234 0381

karlyn.knafo@cbre.com

Nicholas Regan*

Senior Sales Associate

416 801 1658

nicholas.regan@cbre.com

CBRE Limited, Real Estate Brokerage | 5935 Airport Road | Suite 700 | Mississauga, ON | L4V 1W5 *Sales Representative

This disclaimer shall apply to CBRE Limited, Real Estate Brokerage, and to all other divisions of the Corporation ("CBRE"). The information set out herein, including, without limitation, any projections, images, opinions, assumptions and estimates obtained from third parties (the "Information") has not been verified by CBRE, and CBRE does not represent, warrant or guarantee the accuracy, correctness and completeness of the Information. CBRE does not accept or assume any responsibility or liability, direct or consequential, for the Information or the recipient's reliance upon the Information. The recipient of the Information should take such steps as the recipient may deem necessary to verify the Information prior to placing any reliance upon the Information. The Information may change and any property described in the Information may be withdrawn from the market at any time without notice or obligation to the recipient from CBRE. CBRE and the CBRE logo are the service marks of CBRE Limited and/or its affiliated or related companies in other countries. All other marks displayed on this document are the property of their respective owners. All Rights Reserved. Mapping Sources: Canadian Mapping Services canadamapping@cbre.com; DMTI Spatial, EnviroNics Analytics, Microsoft Bing, Google Earth. All rates, measurements, plans and specifications subject to change E. & O. E.

CBRE