

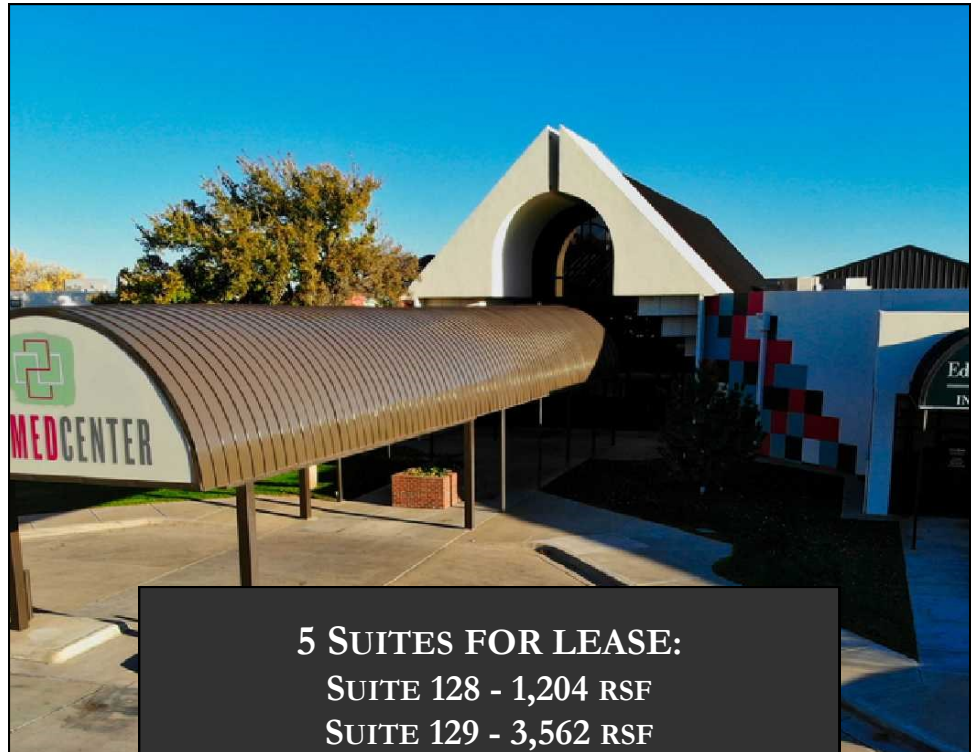
# 3501 MEDCENTER

3501 SONCY  
AMARILLO, TEXAS



#### AMENITIES:

- 150,000 SF MULTI-TENANT MEDICAL OFFICE COMPLEX
- AMPLE FREE PARKING
- AFTER HOURS SECURITY
- COMPETITIVE LEASE RATES
- CLOSE PROXIMITY TO HARRINGTON REGIONAL MEDICAL CENTER
- EASY ACCESS TO I-40
- NORTHWEST TEXAS SURGICAL CENTER
- BSA FAMILY MEDICAL CLINIC



#### 5 SUITES FOR LEASE:

- SUITE 128 - 1,204 RSF
- SUITE 129 - 3,562 RSF
- SUITE 135 - 1,152 RSF
- SUITE 140 - 11,782 RSF
- SUITE 148 - 4,342 RSF



#### PAT DAVIS, BROKER

806.355.7200 x203  
806.679.7907  
pat@patdavisproperties.com



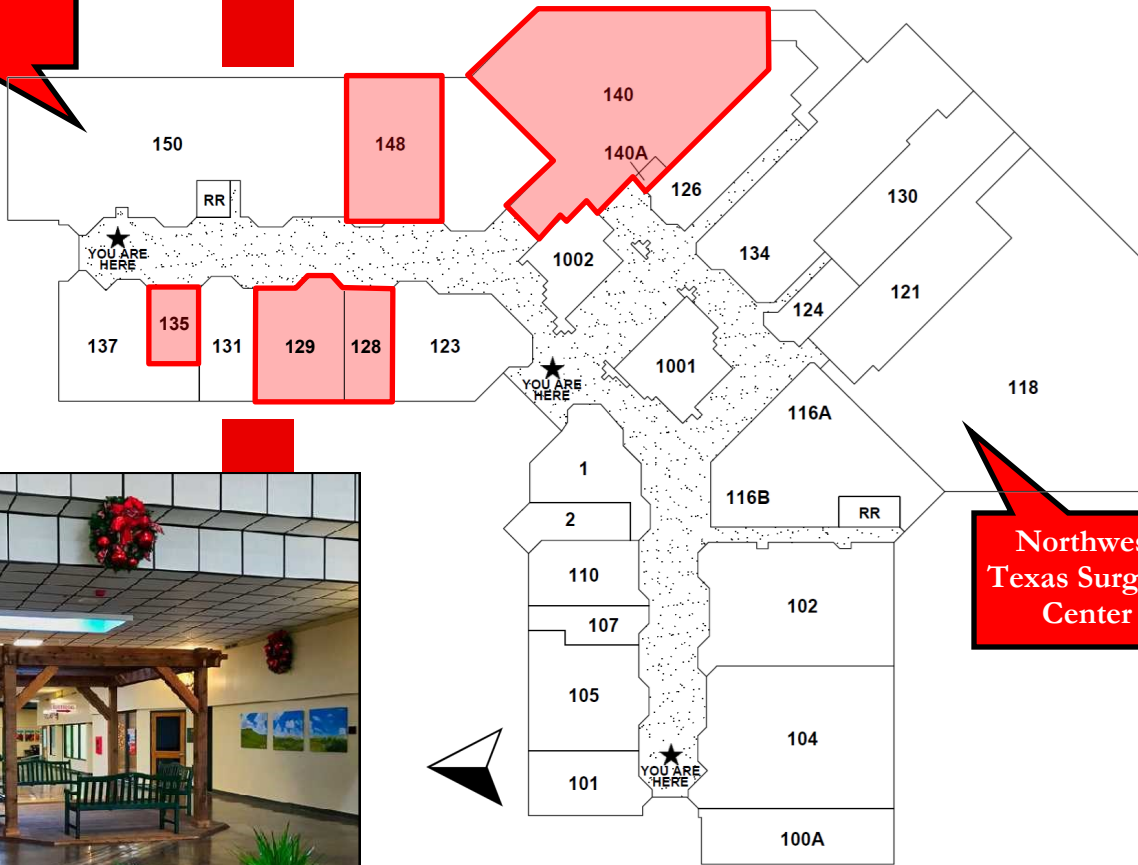
#### LEW BRADSHAW

MARKETING & BUSINESS DEVELOPMENT  
806.355.7200 x208  
806.674.7716  
lew@patdavisproperties.com

# 3501 MEDCENTER

## SITE PLAN WITH VACANCIES HIGHLIGHTED

**BSA  
Family**



**Northwest  
Texas Surgical  
Center**



**PAT DAVIS, BROKER**  
806.355.7200 x203  
806.679.7907  
pat@patdavisproperties.com

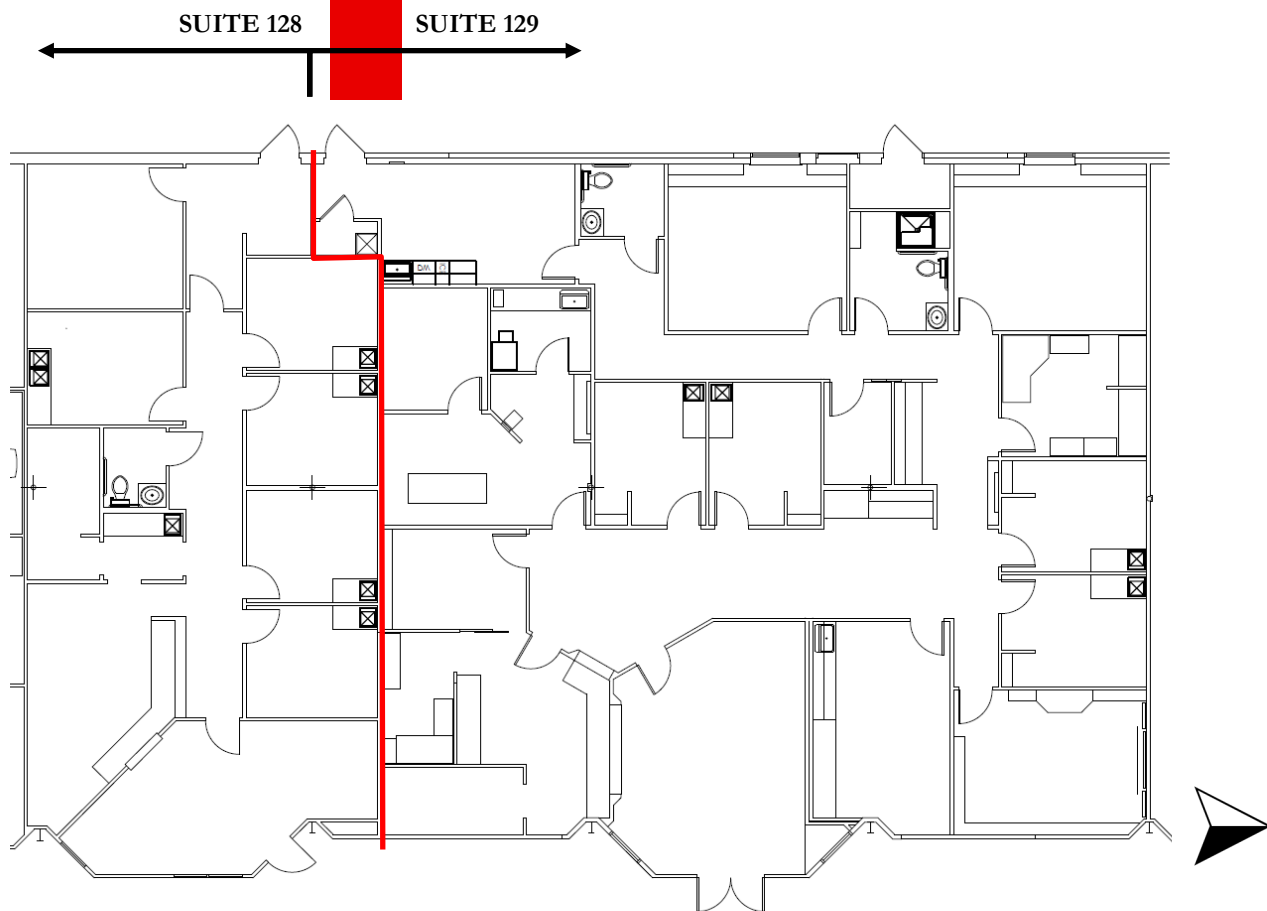


**LEW BRADSHAW**  
MARKETING & BUSINESS DEVELOPMENT  
806.355.7200 x208  
806.674.7716  
lew@patdavisproperties.com

# 3501 MEDCENTER

SUITE 128 - 3,562 RSF

SUITE 129 - 1,204 RSF



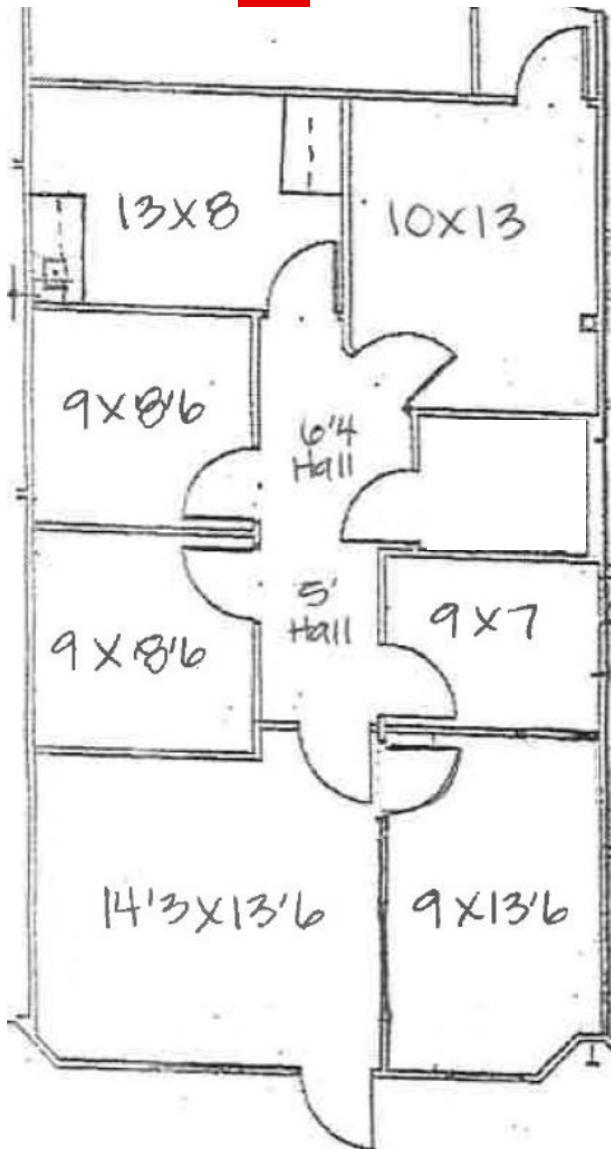
**PAT DAVIS, BROKER**  
806.355.7200 x203  
806.679.7907  
pat@patdavisproperties.com



**LEW BRADSHAW**  
MARKETING & BUSINESS DEVELOPMENT  
806.355.7200 x208  
806.674.7716  
lew@patdavisproperties.com

# 3501 MEDCENTER

SUITE 135 - 1,152 RSF



**PAT DAVIS, BROKER**

806.355.7200 x203  
806.679.7907  
pat@patdavisproperties.com



**LEW BRADSHAW**

MARKETING & BUSINESS DEVELOPMENT  
806.355.7200 x208  
806.674.7716  
lew@patdavisproperties.com

# 3501 MEDCENTER

SUITE 140 - 11,782 RSF



**PAT DAVIS, BROKER**

806.355.7200 x203  
806.679.7907  
pat@patdavisproperties.com

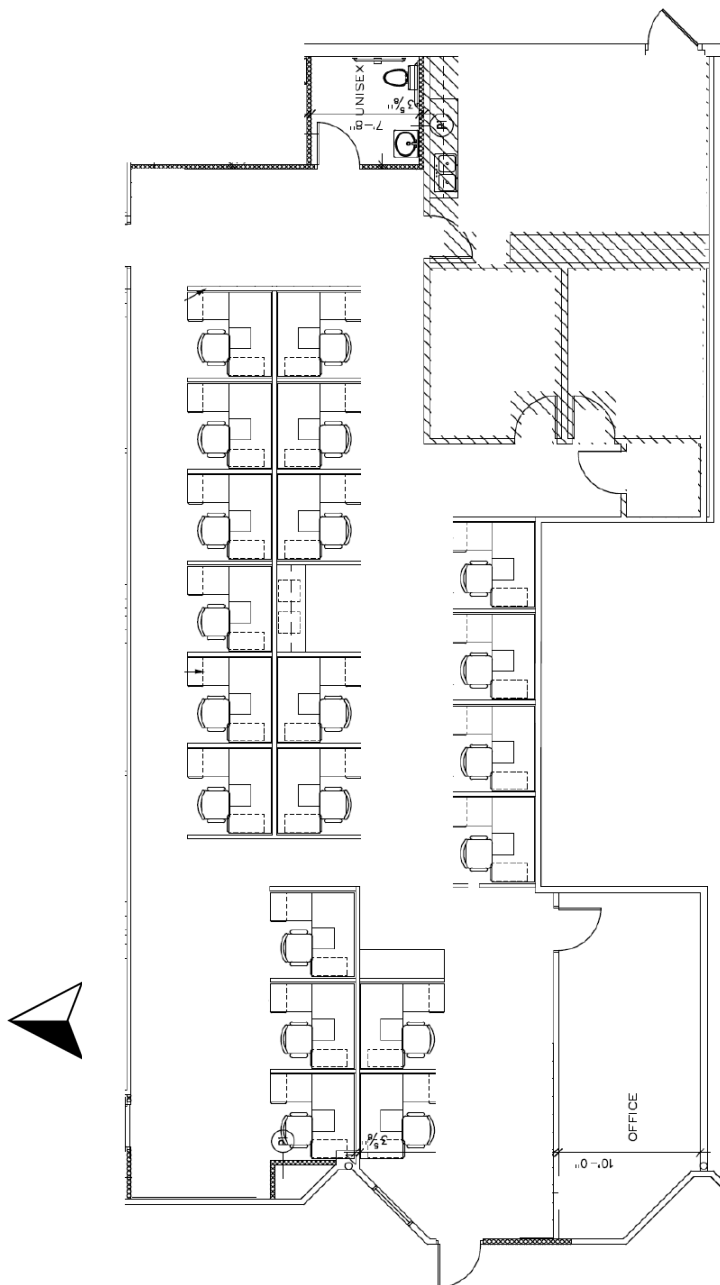


**LEW BRADSHAW**

MARKETING & BUSINESS DEVELOPMENT  
806.355.7200 x208  
806.674.7716  
lew@patdavisproperties.com

# 3501 MEDCENTER

SUITE 148 - 4,342 RSF



**PAT DAVIS, BROKER**

806.355.7200 x203  
806.679.7907  
pat@patdavisproperties.com



**LEW BRADSHAW**

MARKETING & BUSINESS DEVELOPMENT  
806.355.7200 x208  
806.674.7716  
lew@patdavisproperties.com

# 3501 MEDCENTER

## MAP LOCATION



**PAT DAVIS, BROKER**

806.355.7200 x203

806.679.7907

pat@patdavisproperties.com



**LEW BRADSHAW**

MARKETING & BUSINESS DEVELOPMENT

806.355.7200 x208

806.674.7716

lew@patdavisproperties.com