

1210 US HWY 27 | Moore Haven, Florida 33471

MLS #: 225052292

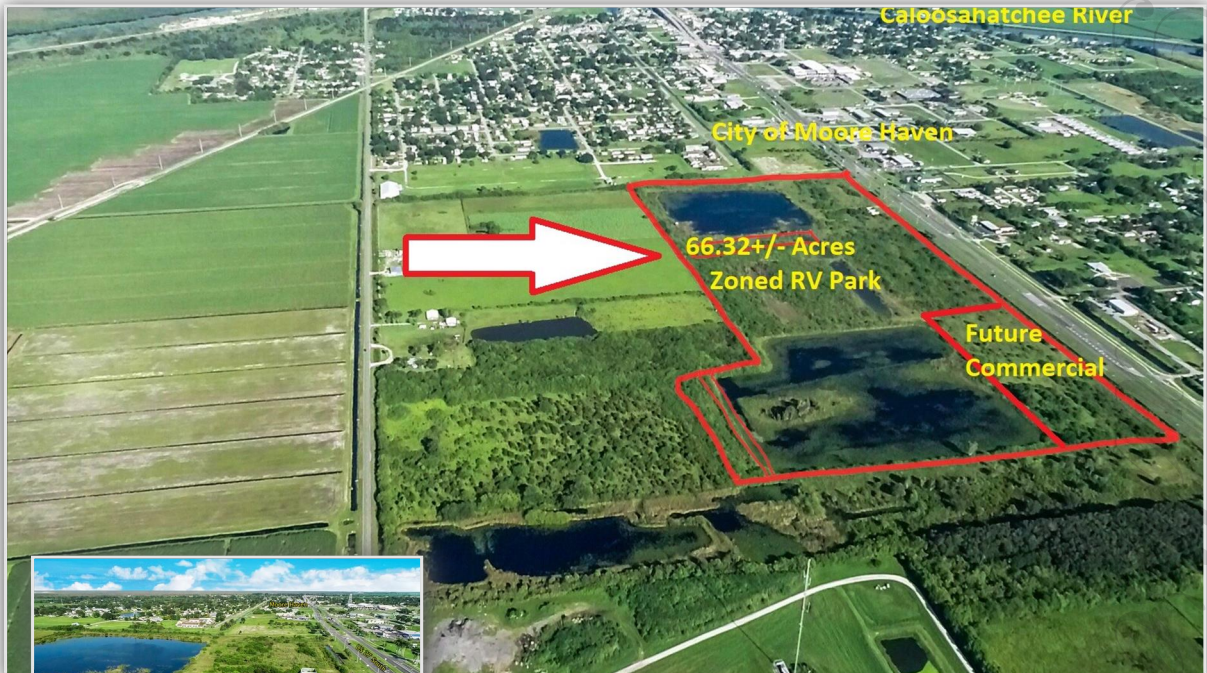
SOUTHERN HERITAGE REAL ESTATE AND INVESTMENTS
863-675-4500
realestate@soland.com



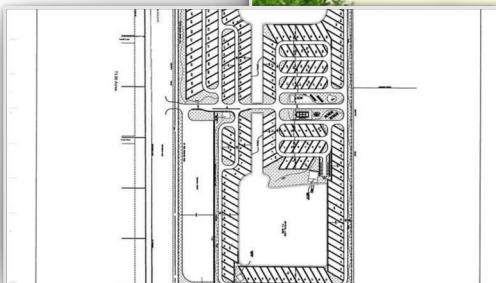
Located on busy US HWY 27, this 66.31+/- acre property zoned and entitled for up to 250 RV / Motorcoach lots! This includes 2 lakes, for lakefront sites. Access to city of Moore Haven utilities including central water & sewer is available. With easy access to the Caloosahatchee River, and Lake Okeechobee, in a central location on State Hwy 27 with direct access to Central & South Florida, this location is ripe for development!
Greg Bone 863-835-0191



\$3,900,000



- Waterfront Property
- Zoned RV Park
- City Utilities



See the Virtual Tour! www.tourfactory.com/3210097

Equal Housing Opportunity | All Information Deemed Reliable but not Guaranteed