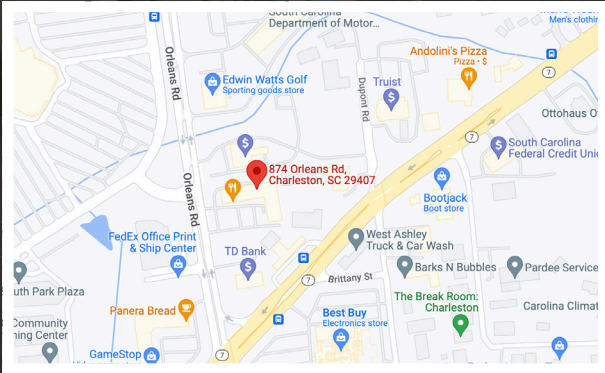


AVAILABLE - FOR LEASE

SUMMERALL SQUARE

CHARLESTON, SC 29407

RETAIL | OFFICE



LOCATION

OFFERED BY



(843) 856-4600
www.belklucy.com

Kevin Shields
 kevin.shields@belklucy.com
 (843) 936-1715 — direct office
 (843) 593-7119 — mobile

AND

Trey Lucy
 trey.lucy@belklucy.com
 (843) 606-5455 — direct office
 (843) 566-2867 — mobile

AND

Blair Belk, CCIM
 blair.belk@belklucy.com
 (843) 606-5449 — direct office
 (843) 709-9292 — mobile

PROPERTY INFORMATION



PROPERTY DESCRIPTION

Belk | Lucy is pleased to present the exclusive listing for Summerall Square at 874 Orleans Road. This retail center consists of 8 units total including Taste of Thai, Grill Masters of Charleston, and State Farm, just to name a few. Centrally positioned off of Sam Rittenberg Boulevard, Summerall Square has easy access to Ashley River Road, Mark Clark Expressway and Highway 17.

AREA DESCRIPTION

West Ashley is located west of the Charleston peninsula, bordered by the Ashley River and the Intracoastal Waterway. West Ashley is the oldest suburb in Charleston, and closest to town. The population in the Charleston, SC, MSA has exceeded 800,000 and is expected to hit over a million people within the next ten years. With that said, much of the future development is expected to happen in West Ashley and the City of Charleston is focused on enhancing this area by supporting commercial redevelopments.

TERMS AND CONDITIONS

Unit 3	3,282 sf	\$18.00/sf NNN
Unit 8	1,350 sf	\$25.00/sf NNN
CTI estimate		\$6.29/sf

DEMOGRAPHICS (3-MILE)

Population	53,858
Households	25,123
Avg. HH Income	\$101,457

OFFERED BY



(843) 856-4600
www.belklucy.com

Kevin Shields
kevin.shields@belklucy.com
(843) 936-1715 — direct office
(843) 593-7119 — mobile

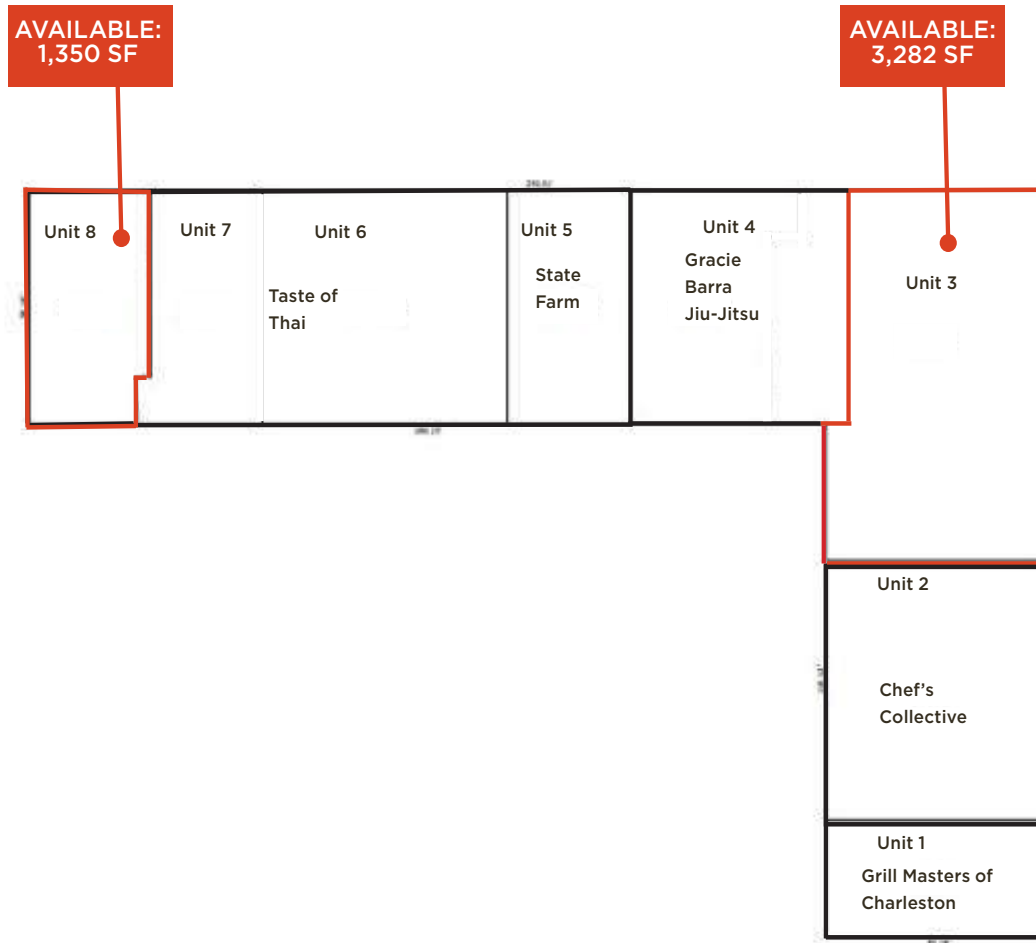
AND

Trey Lucy
trey.lucy@belklucy.com
(843) 606-5455 — direct office
(843) 566-2867 — mobile

AND

Blair Belk, CCIM
blair.belk@belklucy.com
(843) 606-5449 — direct office
(843) 709-9292 — mobile

SITE PLAN



OFFERED BY



(843) 856-4600
www.belklucy.com

Kevin Shields
kevin.shields@belklucy.com
(843) 936-1715 — direct office
(843) 593-7119 — mobile

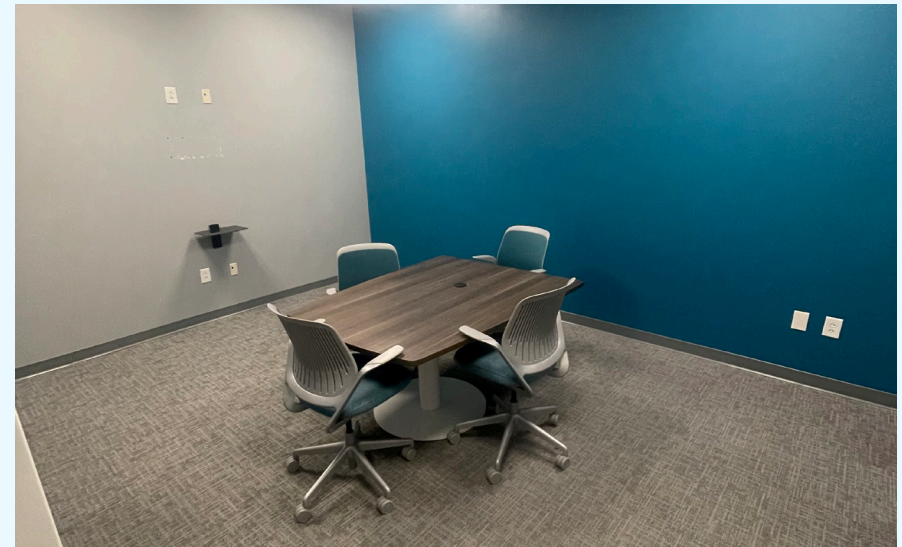
AND

Trey Lucy
trey.lucy@belklucy.com
(843) 606-5455 — direct office
(843) 566-2867 — mobile

AND

Blair Belk, CCIM
blair.belk@belklucy.com
(843) 606-5449 — direct office
(843) 709-9292 — mobile

UNIT 3 PHOTOS



OFFERED BY



(843) 856-4600
www.belklucy.com

Kevin Shields
kevin.shields@belklucy.com
(843) 936-1715 — direct office
(843) 593-7119 — mobile

AND

Trey Lucy
trey.lucy@belklucy.com
(843) 606-5455 — direct office
(843) 566-2867 — mobile

AND

Blair Belk, CCIM
blair.belk@belklucy.com
(843) 606-5449 — direct office
(843) 709-9292 — mobile