

BREA NORTHPOINT

203 N. Brea Blvd., Brea, CA

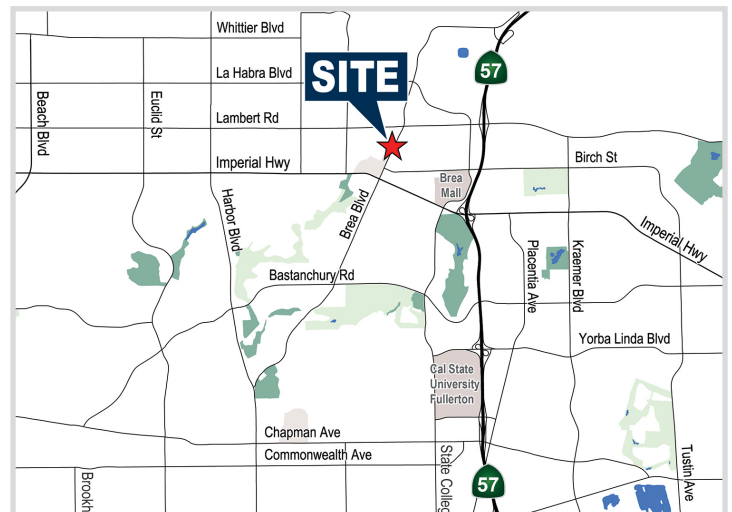
OFFICE FOR LEASE

± 1,500 - ±3,000 SF



PROPERTY FEATURES

- High Image Office Project
- Downtown Brea Location
- Building Signage Available
- Elevator Served
- Ample Parking (No cost)
- Located Near Many Retail Amenities
- Close Proximity to the 57 and 91 Freeways
- Major Street Frontage
- Adjacent to "Brea Tracks" Walking/Bike Path



BARRY WALSHE

Vice President

714.803-8300

Lic. #01213417

bwalshe@voitco.com

Voit

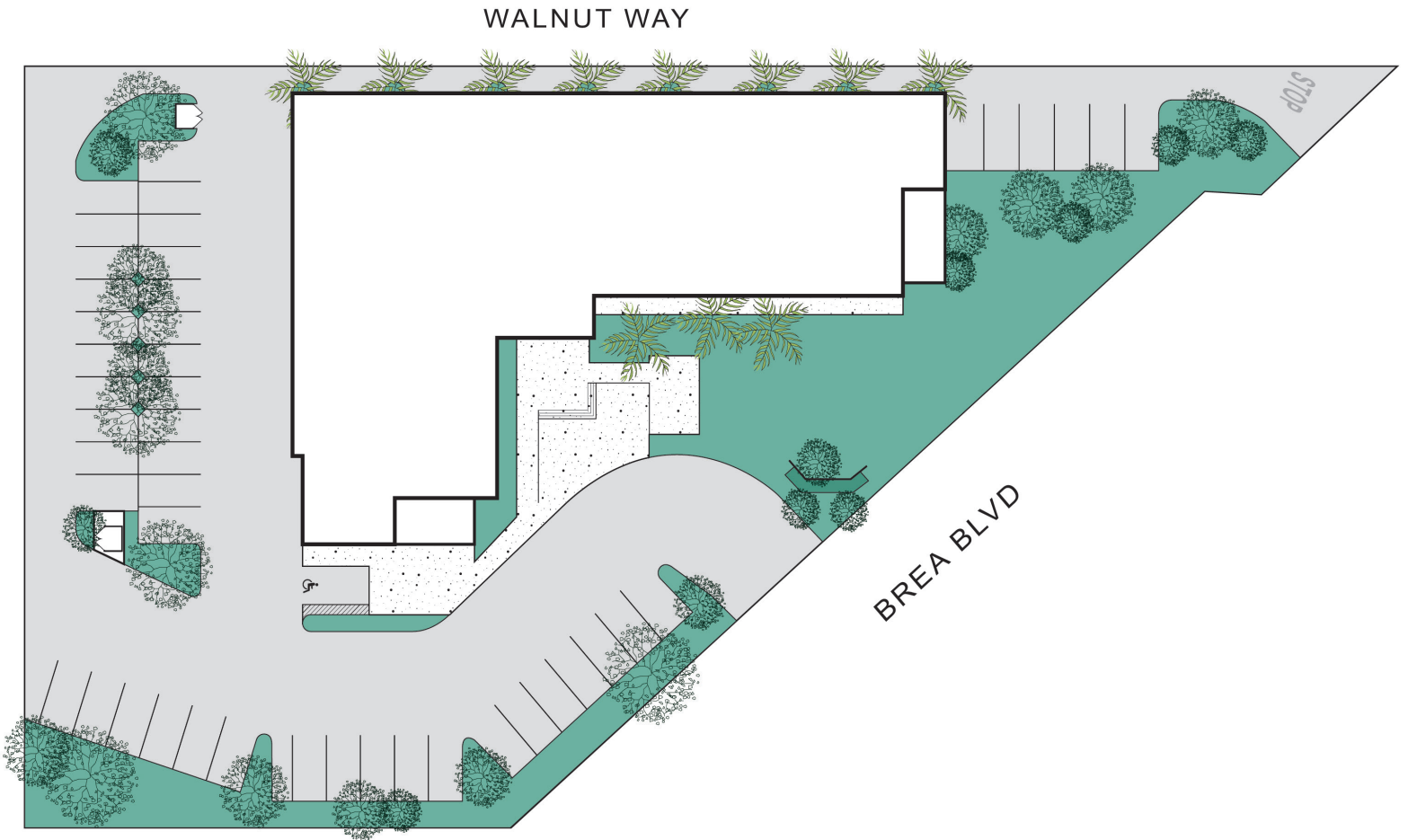
REAL ESTATE SERVICES

BREA NORTHPOINT

203 N. Brea Blvd., Brea, CA

OFFICE FOR LEASE

± 1,500 - ±3,000 SF



BARRY WALSH
Vice President
714.803-8300
Lic. #01213417
bwalsh@voitco.com

Voit
REAL ESTATE SERVICES

2400 E. Katella Avenue, Suite 750, Anaheim, CA 92806 • 714.978.7880 • 714.978.9431 Fax

www.VoitCo.com

Licensed as a Real Estate Salesperson by the DRE. The information contained herein has been obtained from sources we deem reliable. While we have no reason to doubt its accuracy, we do not guarantee it. ©2024 Voit Real Estate Services, Inc. All Rights Reserved. License #01991785.

BREA NORTHPOINT

203 N. Brea Blvd., Brea, CA

OFFICE FOR LEASE

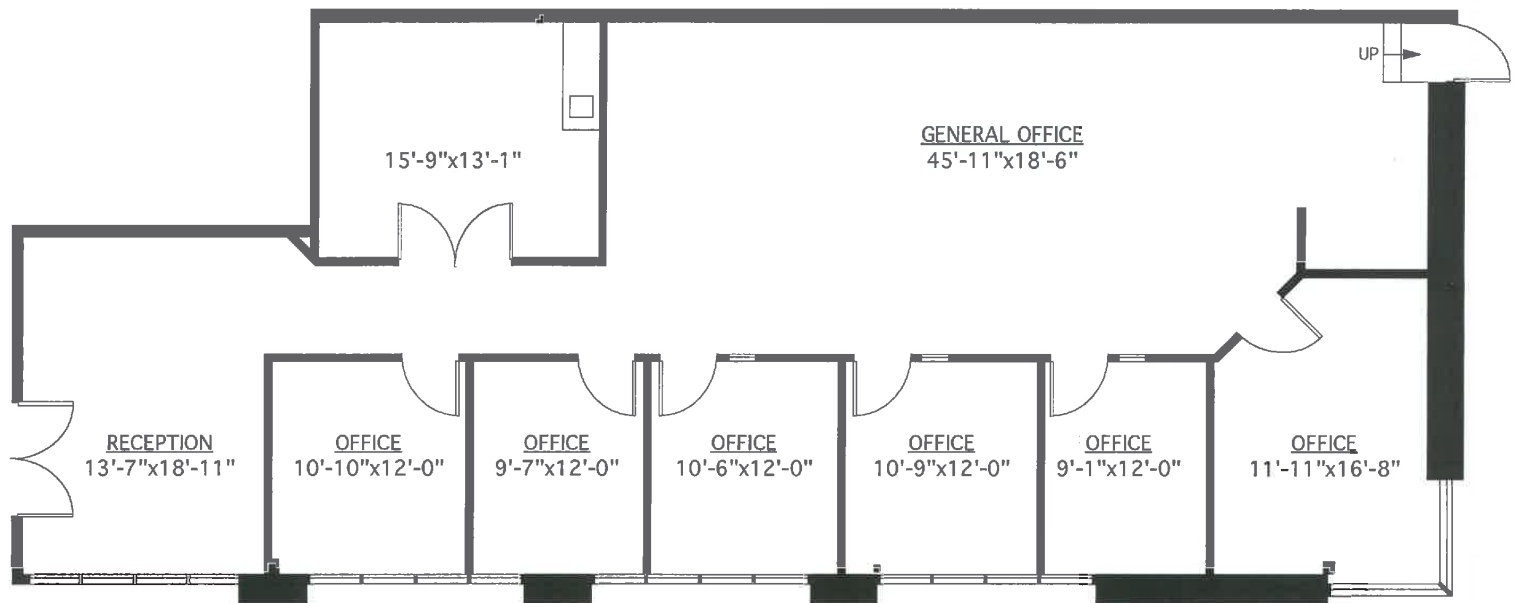
± 1,500 - ±3,000 SF

SUITE 110

AVAILABILITY

Suite(s)	Rentable SF	Property Features
110	± 2,864	<ul style="list-style-type: none">Vacant / Immediate OccupancyHigh Image Office UnitOff-Lobby LocationExtensive Glass LineKitchenette / Break RoomDouble Door EntryPrivate Office with SidelightsOpen Area / LG Training RoomBuilding Signage AvailableTeaser Rate

*Tenant pays electrical.



*Floor Plan Not to Scale

BARRY WALSHE
Vice President
714.803-8300
Lic. #01213417
bwalshe@voitco.com

Voit
REAL ESTATE SERVICES

2400 E. Katella Avenue, Suite 750, Anaheim, CA 92806 • 714.978.7880 • 714.978.9431 Fax

www.VoitCo.com

Licensed as a Real Estate Salesperson by the DRE. The information contained herein has been obtained from sources we deem reliable. While we have no reason to doubt its accuracy, we do not guarantee it. ©2024 Voit Real Estate Services, Inc. All Rights Reserved. License #01991785.