

1086-A AVENUE C

BETWEEN W52ND & W53RD ST | BAYONNE, NJ

ksr
**RETAIL SPACE
FOR LEASE**
Call/Text For More Info
914.400.3765

OPEN

1086-A AVENUE C

BETWEEN W52ND & W53RD ST | BAYONNE, NJ

SIZE: 1,400 SF Ground Floor

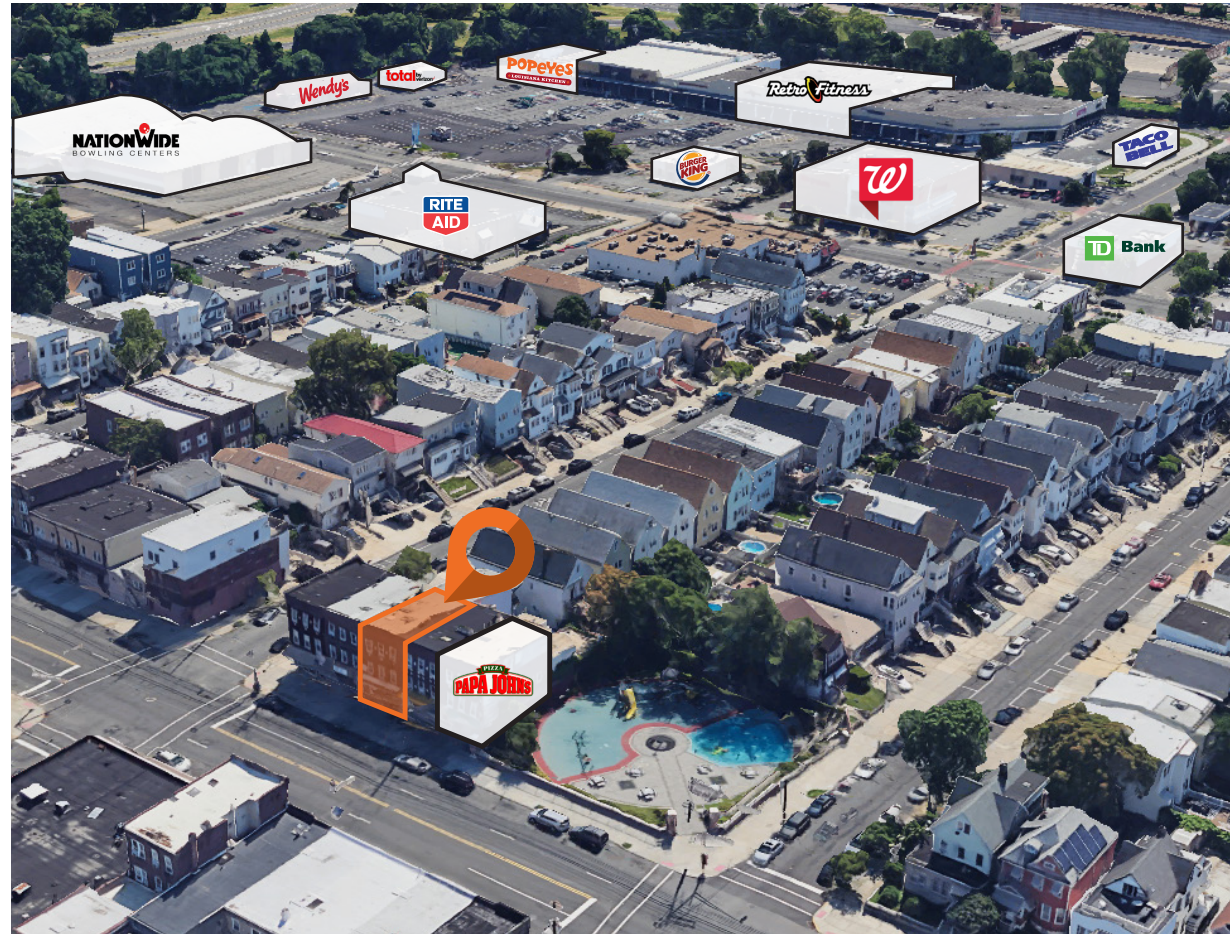
FRONTAGE: 12'

POSSESSION: Immediate

TRANSPORTATION: **81L** **81X** **120**

HIGHLIGHTS:

- Former deli for over 55 years
- All uses accepted
- Venting possible
- Kitchen & bathroom in place
- Close to I78 and Liberty National Golf Course overlooking the Statue of Liberty and Ellis Island Museum
- Neighboring tenants include:
Papa John's, Dragon House, Avenue C hardware, Double Batch Bakery, Rite Aid, Walgreens, Burger King, Taco Bell, Popeye's, Wendy's, Tital by Verizon, TD Bank, retro Fitness, & many more!



CONTACT BELOW FOR MORE INFORMATION:

Barry Fishbach

914.400.3765

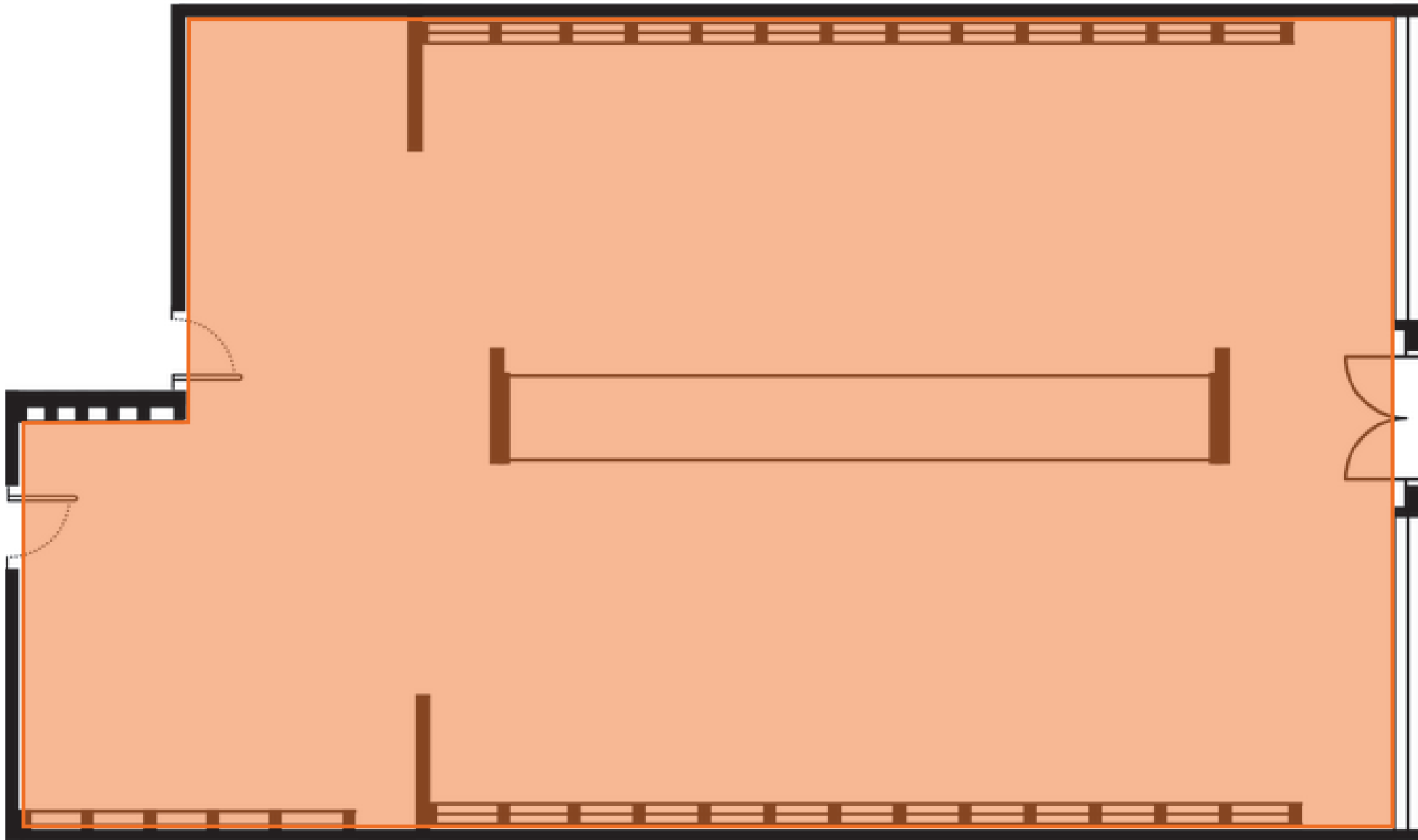


All information supplied in this marketing presentation and/or flyer is from sources deemed reliable and is furnished subject to errors, omissions, modifications, removal of listings from sale/lease and to any listing condition. Any square footage, dimensions, floor plans and/or technical data set forth are approximations and are subject to further elaboration/confirmation.

1086-A AVENUE C

BETWEEN W52ND & W53RD ST | BAYONNE, NJ

FLOOR PLANS:
GROUND FLOOR - 1,400 SF



All information supplied in this marketing presentation and/or flyer is from sources deemed reliable and is furnished subject to errors, omissions, modifications, removal of listings from sale/lease and to any listing condition. Any square footage, dimensions, floor plans and/or technical data set forth are approximations and are subject to further elaboration/confirmation.

1086-A AVENUE C

BETWEEN W52ND & W53RD ST | BAYONNE, NJ

INTERIORS:

