

215 Prairie Lake Road, Unit F, East Dundee, IL

Available: 11,050 SF



Immediate Availability

FOR LEASE: 11,050 SF End Cap Unit in High Image Business Park

AVAILABLE: 11,050 SF

OFFICE: 3,900 SF

YEAR BUILT: 2005

LOADING: 1 Dock; 1 Drive-In Door (12'x14')

CEILING HEIGHT: 24'

ZONING: I-1

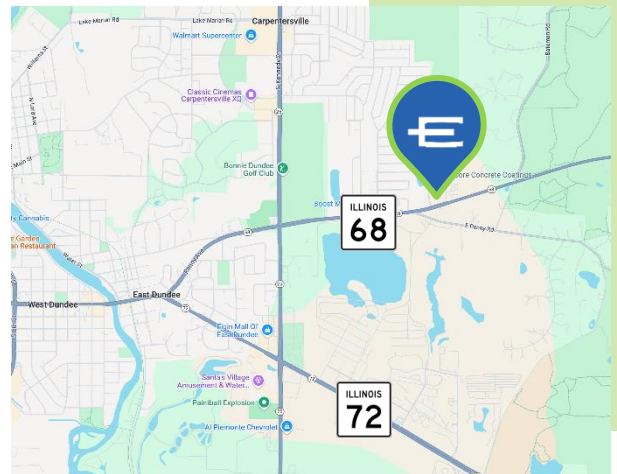
SPRINKLER: Yes

POWER: 400 Amps/480 Volt/3 Phase

TAXES: \$1.96 PSF (Paid 2024)

CAM: \$1.11 PSF

LEASE RATE: Subject to Offer



SCAN FOR LISTING



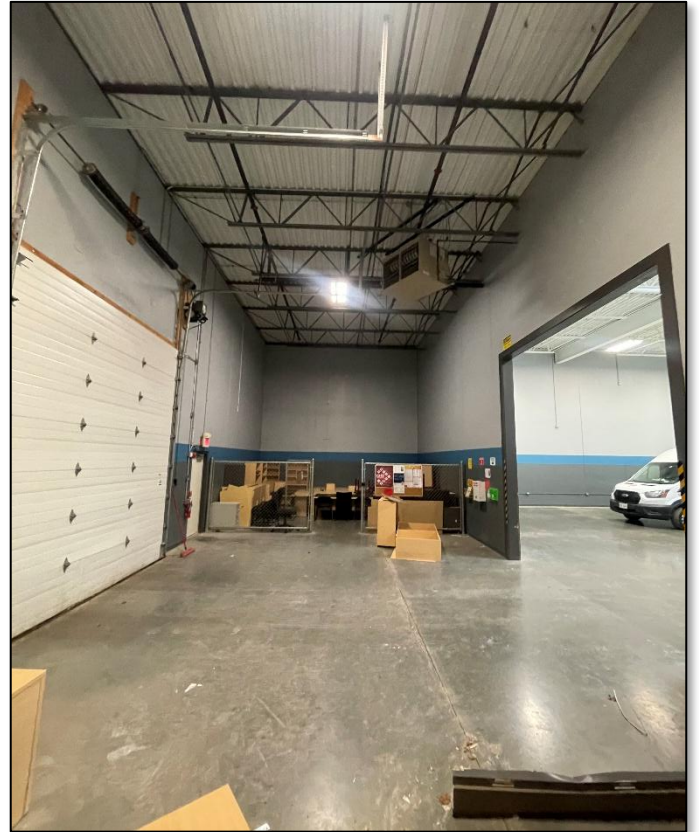
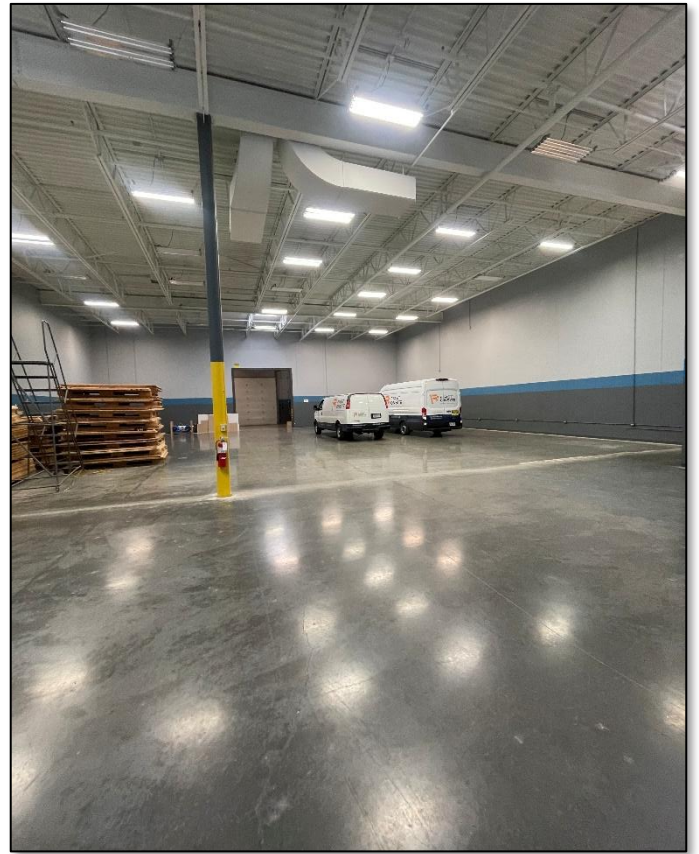
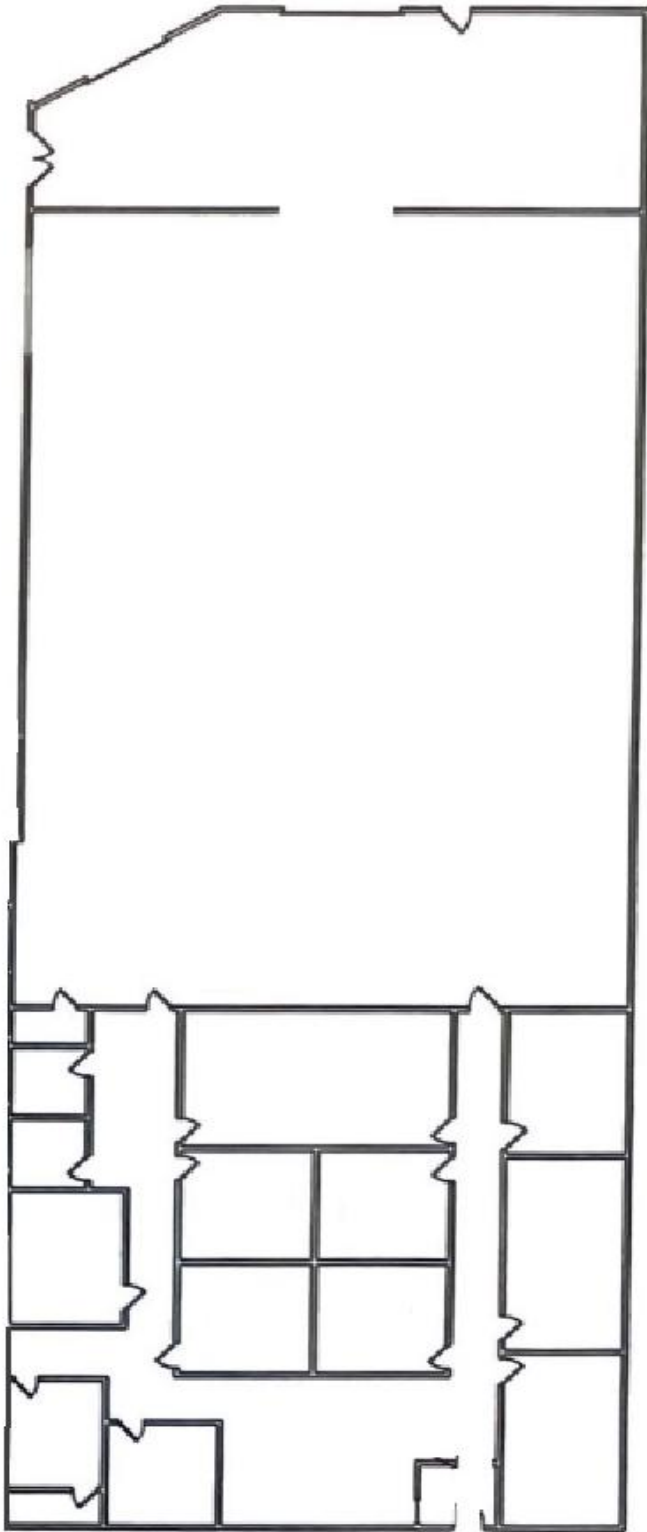
**ENTRE**  
Commercial Realty LLC

Mike Deserto  
224-588-3026  
[mdeserto@entreccommercial.com](mailto:mdeserto@entreccommercial.com)

Cory Kay  
224-532-2497  
[ckay@entreccommercial.com](mailto:ckay@entreccommercial.com)

Elisabeth Lazzara  
847-310-4209  
[elazzara@entreccommercial.com](mailto:elazzara@entreccommercial.com)

# SPACE PLAN



# LOCATION



**CLOSE PROXIMITY  
TO I-90**



**LOCATED WITHIN  
AN OPPORTUNITY  
ZONE**



**25 MILES FROM  
O'HARE INTL  
AIRPORT**



**KANE COUNTY  
TAXES**

**ENTRE**  
Commercial Realty LLC

**Mike Deserto**  
224-588-3026  
[mdeserto@entreccommercial.com](mailto:mdeserto@entreccommercial.com)

**Cory Kay**  
224-532-2497  
[ckay@entreccommercial.com](mailto:ckay@entreccommercial.com)

**Elisabeth Lazzara**  
847-310-4209  
[elazzara@entreccommercial.com](mailto:elazzara@entreccommercial.com)