

OFFICE BUILDING FOR LEASE

1100 Eaglewood Drive
Virginia Beach, VA 23454



Lease Rate - \$20.00 psf, NNN

- 2 Units Available
- Each Unit has approximately 1,600 square foot
- 1 unit is located on the ground floor, other unit is upstairs
- Reception Area
- 6 Offices
- 2 Bathrooms and Kitchenette
- Zoned: B-2
- 24 Parking Spaces
- Located

The information presented in this marketing flyer is obtained from sources believed to be reliable, but is not warranted.
This offer is subject to prior sale or lease, errors, omissions or withdrawal without notice.

EXCLUSIVELY OFFERED BY :

CONTACT:

LINDSEY R. ELLIOTT

lre@riddleassociates.com

SHANNON A. STIDHAM

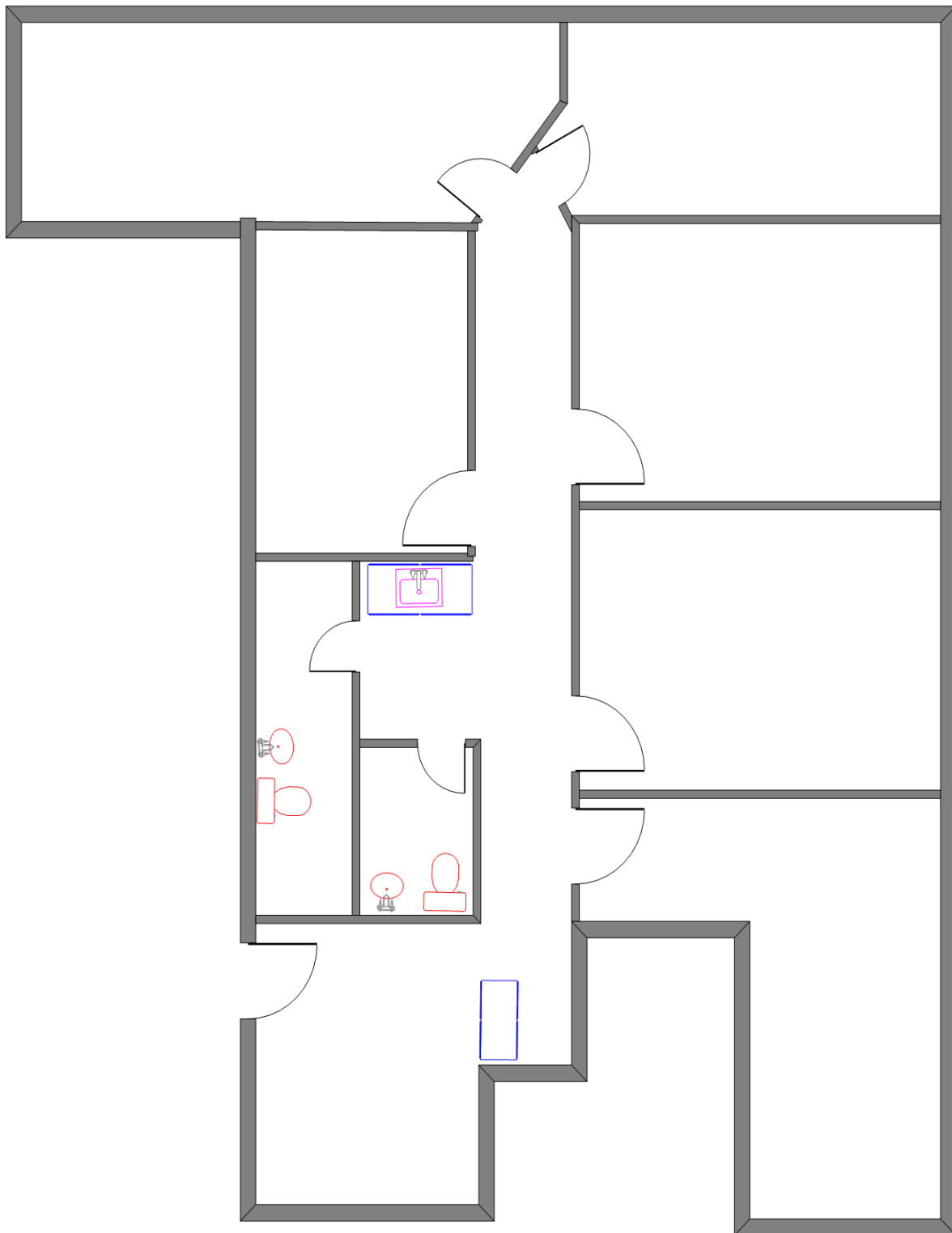
sstidham@riddleassociates.com

(757) 523-1900

RIDDLE ASSOCIATES, INC.

Commercial Real Estate

"Real Estate Services Tailored to Your Needs"



This floorplan is for representation purposes only. Its accuracy is not warranted by Riddle Associates, Inc.

1100 Eaglewood Drive, Virginia Beach, VA 23454

*The information presented in this marketing flyer is obtained from sources believed to be reliable, but is not warranted.
This offer is subject to prior sale or lease, errors, omissions or withdrawal without notice.*



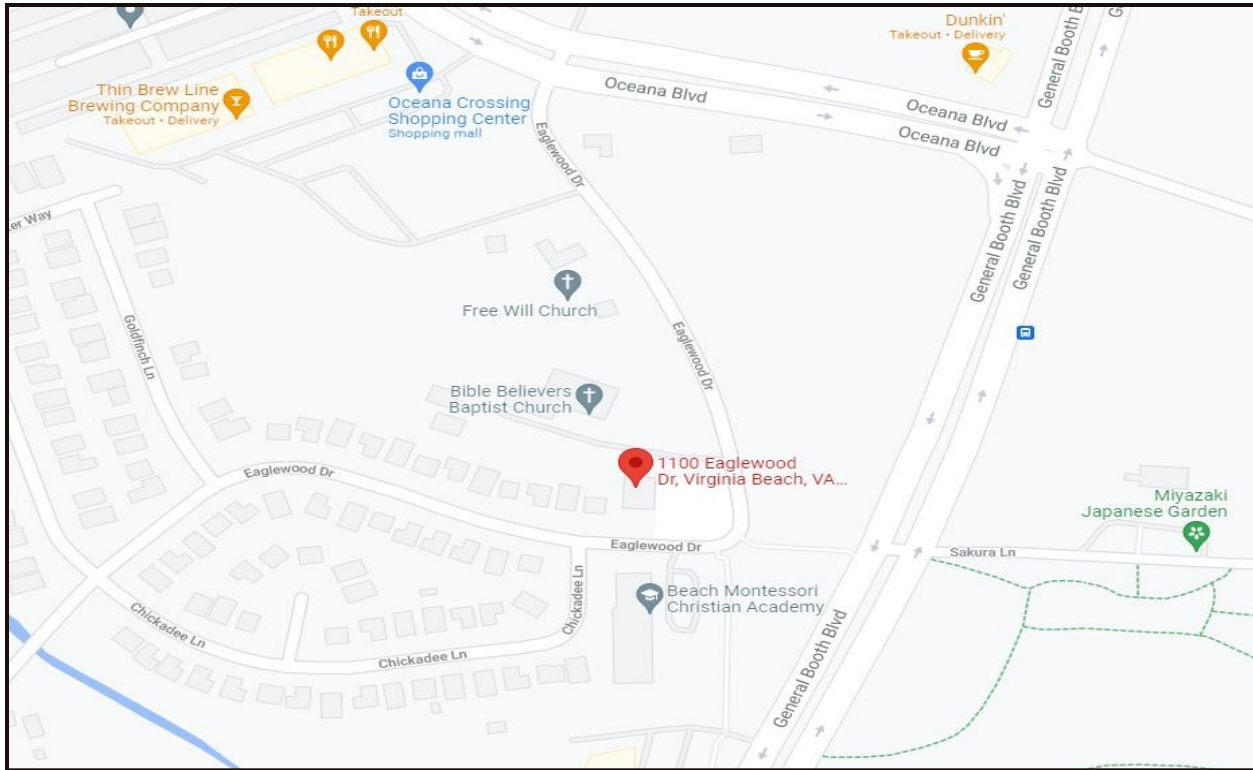
1100 Eaglewood Drive, Virginia Beach, VA 23454

*The information presented in this marketing flyer is obtained from sources believed to be reliable, but is not warranted.
This offer is subject to prior sale or lease, errors, omissions or withdrawal without notice.*



1100 Eaglewood Drive, Virginia Beach, VA 23454

*The information presented in this marketing flyer is obtained from sources believed to be reliable, but is not warranted.
This offer is subject to prior sale or lease, errors, omissions or withdrawal without notice.*



1100 Eaglewood Drive, Virginia Beach, VA 23454

*The information presented in this marketing flyer is obtained from sources believed to be reliable, but is not warranted.
This offer is subject to prior sale or lease, errors, omissions or withdrawal without notice.*