



LEASE

4430 NC HWY 49 S



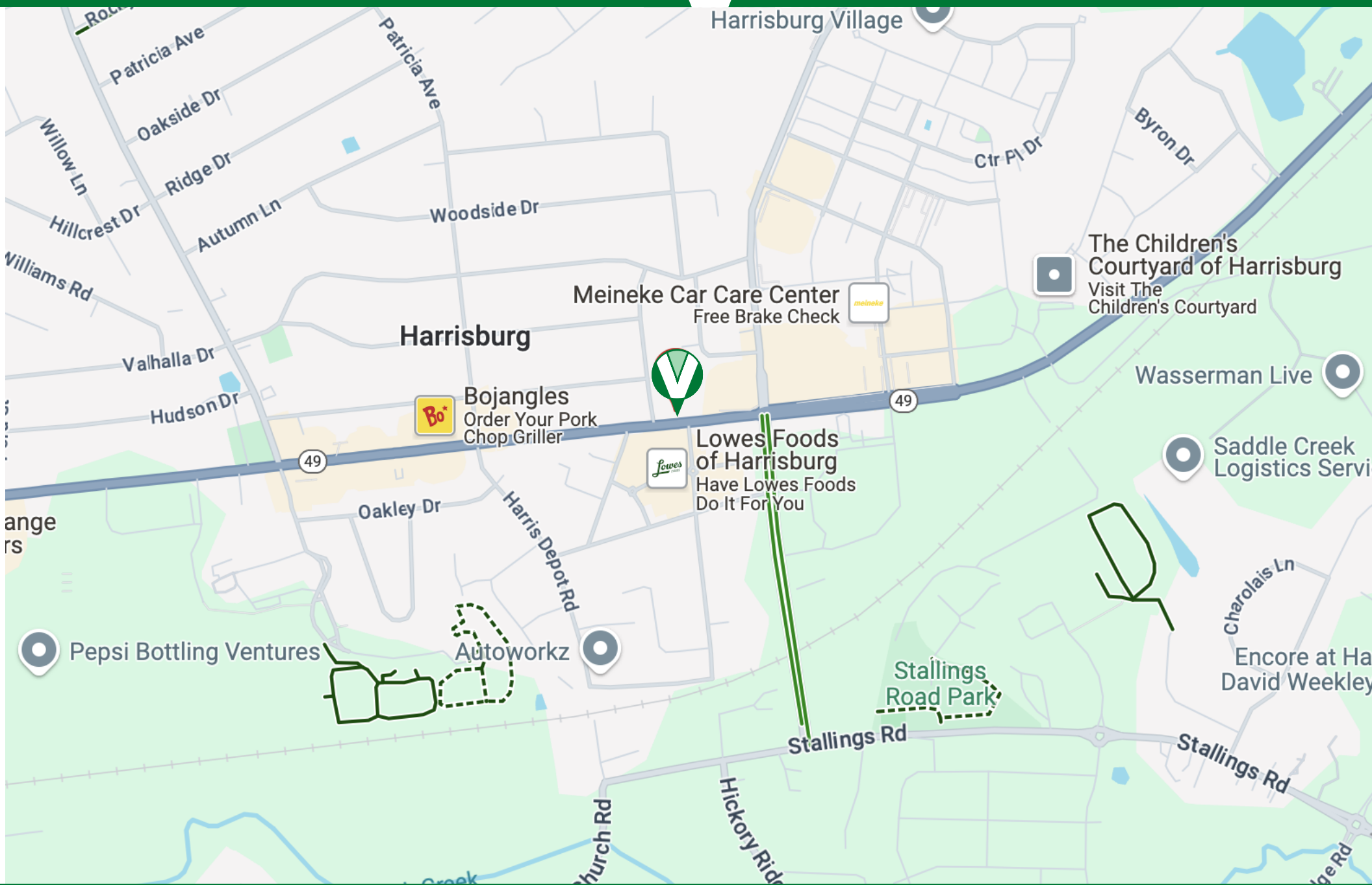
vastcommercial.com

CONTACT

Darrel Williams, Jr.
Ron Cureton

darrel@vastcmre.com
ron@vastcmre.com

704.577.9622
704.277.4534

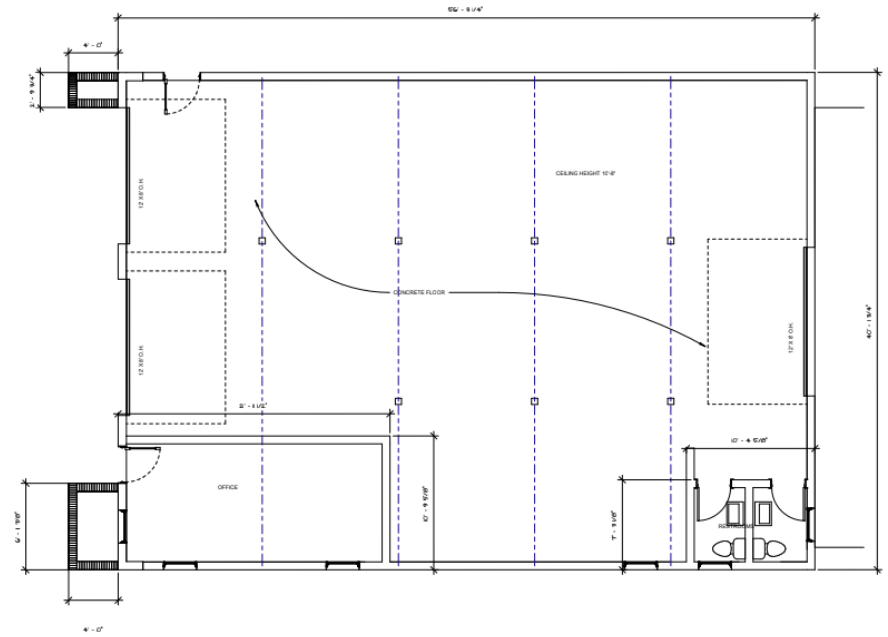
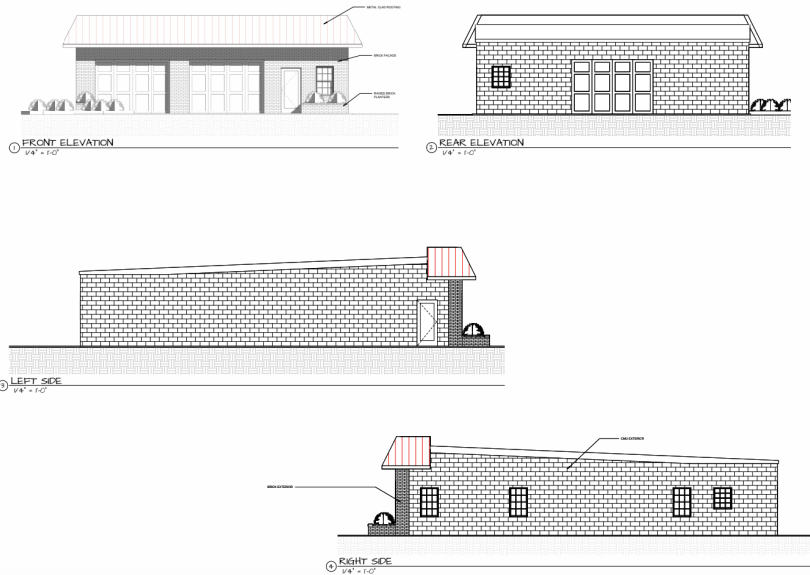


CONTACT

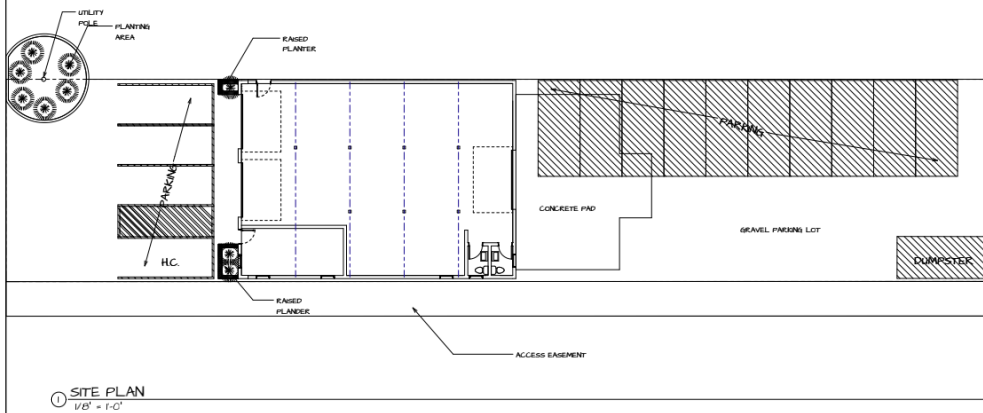
Darrel Williams, Jr.
Ron Cureton

darrel@vastcmre.com
ron@vastcmre.com

704.577.9622
704.277.4534



Various uses permitted including retail, service and office



① FLOOR PLAN PLAN
1/4" = 1'-0"

Radius 1 MILE 3 MILES 5 MILES

Demographics

2024 population	5.4K	39.4K	113.9K
Avg Household Income	\$116.7K	\$114.9K	\$98.2K
Med Household Income	\$107.5K	\$101.2K	\$82K
Households	1.9K	13.6K	41.4K
Daytime Employees	3.3K	10.1K	23.4K

HIGHWAY 49 S.

① SITE PLAN
1/8" = 1'-0"



vastcommercial.com

CONTACT

Darrel Williams, Jr.
Ron Cureton

darrel@vastcmre.com
ron@vastcmre.com

704.577.9622
704.277.4534



4430 NC HWY 49 S

- ▶ 2,337 SF
- ▶ Highly visible on NC Hwy 49 S
- ▶ Less than 1 mile from Town center

DETAILS

PARCEL ID'S	5507-76-6353-0000
ZONING / LAND USE	GC - General Commercial
PRICING	Call for details

ADDRESS: 4430 NC Hwy 49 S
Harrisburg NC 28075

CONTACT

Darrel Williams, Jr. | darrel@vastcmre.com | 704.577.9622
Ron Cureton | ron@vastcmre.com | 704.277.4534



4430 NC HWY 49 S



vastcommercial.com

CONTACT

Darrel Williams, Jr.
Ron Cureton

darrel@vastcmr.com
ron@vastcmr.com

704.577.9622
704.277.4534