



WILLIAM - GREEN
REAL ESTATE

*Specialized in all your Real Estate needs in
Williamsburg and Greenpoint.*

Michal Kuras
Real Estate Broker
williamgreenre@gmail.com
646.284.2026



319 Wythe Avenue Brooklyn, N.Y. 11249

Prime Retail

Location, location, location. Located on Wythe Ave between South 2nd Street and South 3rd Street. One of the most vibrant place in the neighborhood. Retail space consist of 900 sq. ft. on the ground floor plus 400 sq. ft. on the second floor with 500 sq. ft. private terrace.

Rent: \$12,000 per month

Key Money: \$200,000

The neighbors



Rivian Electric adventure vehicle 360 Wythe Avenue



VanMoof Electric Bicycles 326 Wythe Avenue



Unagi Electric Scooters 324 Wythe Avenue



Janes Motorcycle 396 Wythe Avenue

Where to eat



Sundays in Brooklyn 348 Wythe Avenue



Tacocina Domino Park



Freehold 45 South 3rd Street



Aska 47 South 5th Street



12 Chairs Wythe Avenue

Attractions and future projects



Domino Park Kent Avenue Brooklyn, 11249

<https://www.dominopark.com/in-the-park>



Domino Development proposed plans

Transportation



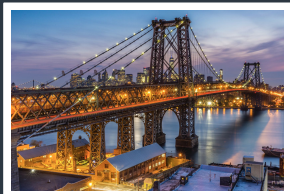
L train Bedford Avenue stop - 10 Blocks - 10 min.



J M Z trains Broadway Street stop - 8 Blocks - 8 min.



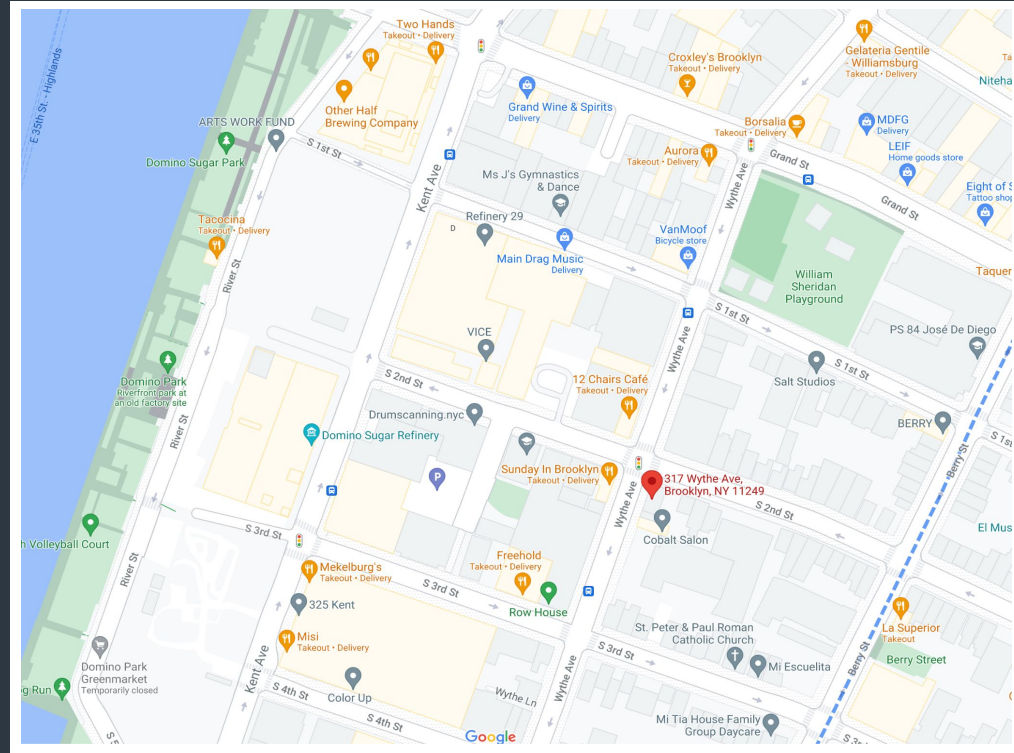
North 7th Street Ferry - 9 Blocks - 9 min.



Williamsburg Bridge - 5 Blocks - 5 min.

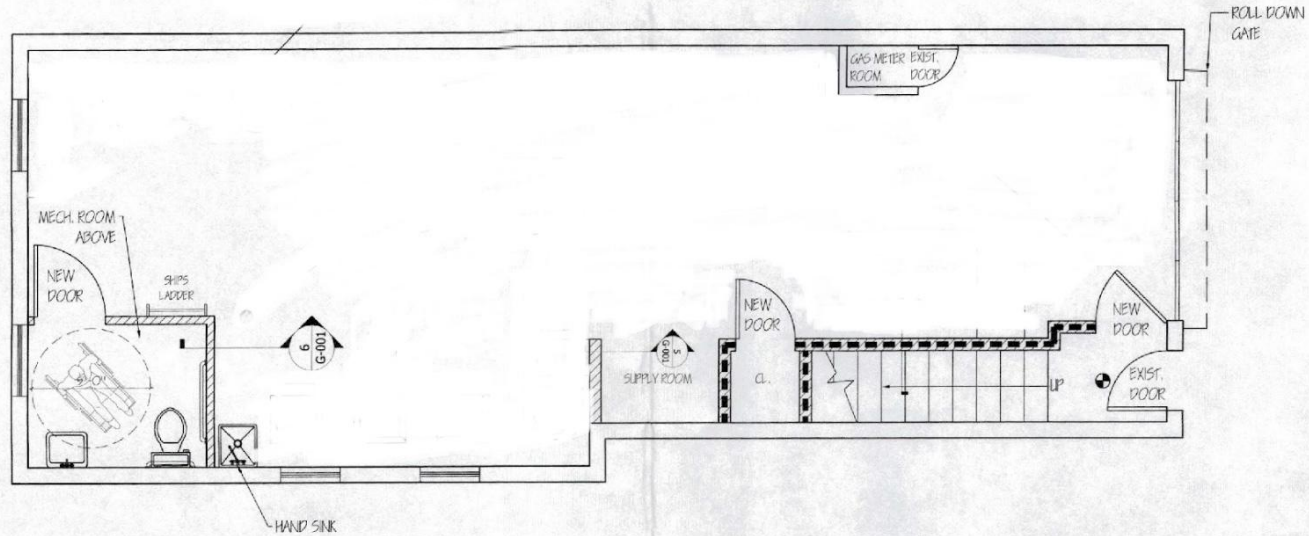
Location

319 Wythe Avenue
Brooklyn, N.Y. 11249



Floor plan 1st Floor

319 Wythe Avenue
Brooklyn N.Y. 11249

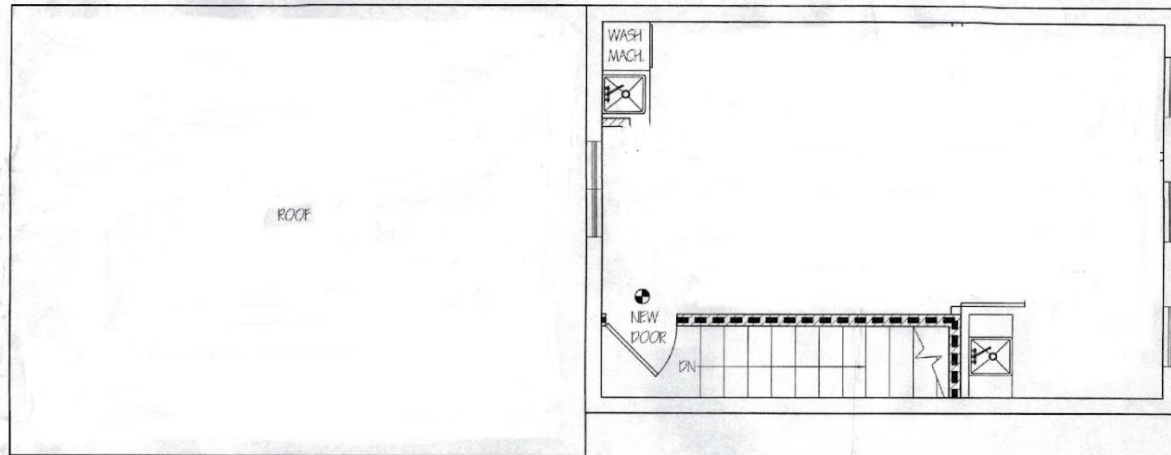


1 FIRST FLOOR PLAN

Scale: 1/4"=1'-0"

Floor plan 2nd

319 Wythe Avenue
Brooklyn N.Y. 11249



2

SECOND FLOOR PLAN

Scale: 1/4" = 1'-0"