



FOR SUBLEASE

PROFESSIONAL OFFICE

IN CENTRALIZED LOCATION

OFF THE I-10

236 AND 242 CAJON STREET | REDLANDS, CA

CBRE

HIGHLIGHTS



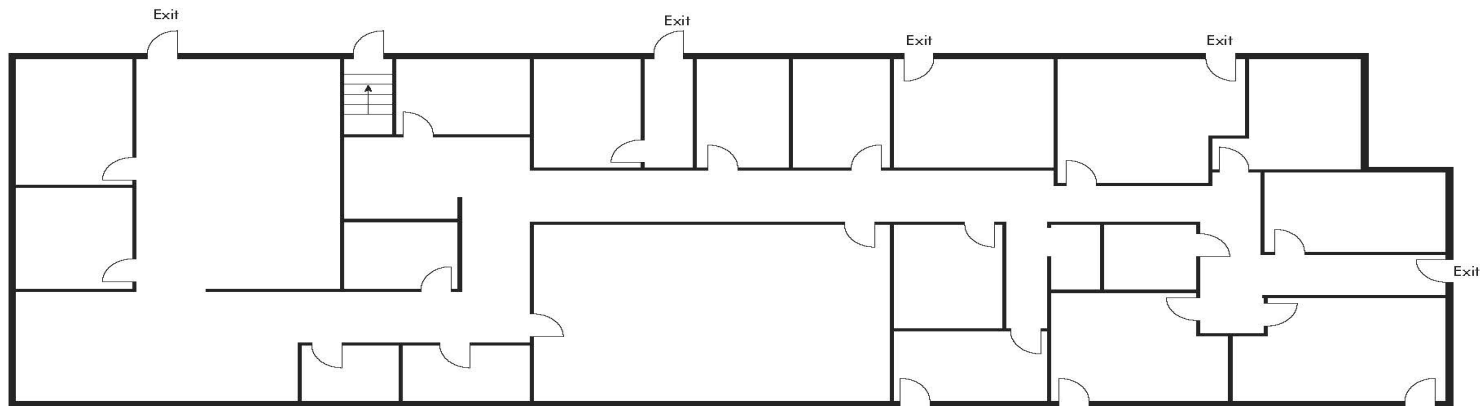
236 and 242 Cajon Street, | Redlands, CA

- One (1) story professional office building
- Located in a high profile, highly visible, heavy commuter corridor in the City of Redlands
- Direct access to the I-10 Freeway
- Within close proximity to medical facilities, housing hotels and retail
- Ideal for attorney's, accountants, medical, and other professional business.

236 Cajon Street

Floor Plan

Total: 5,270 RSF

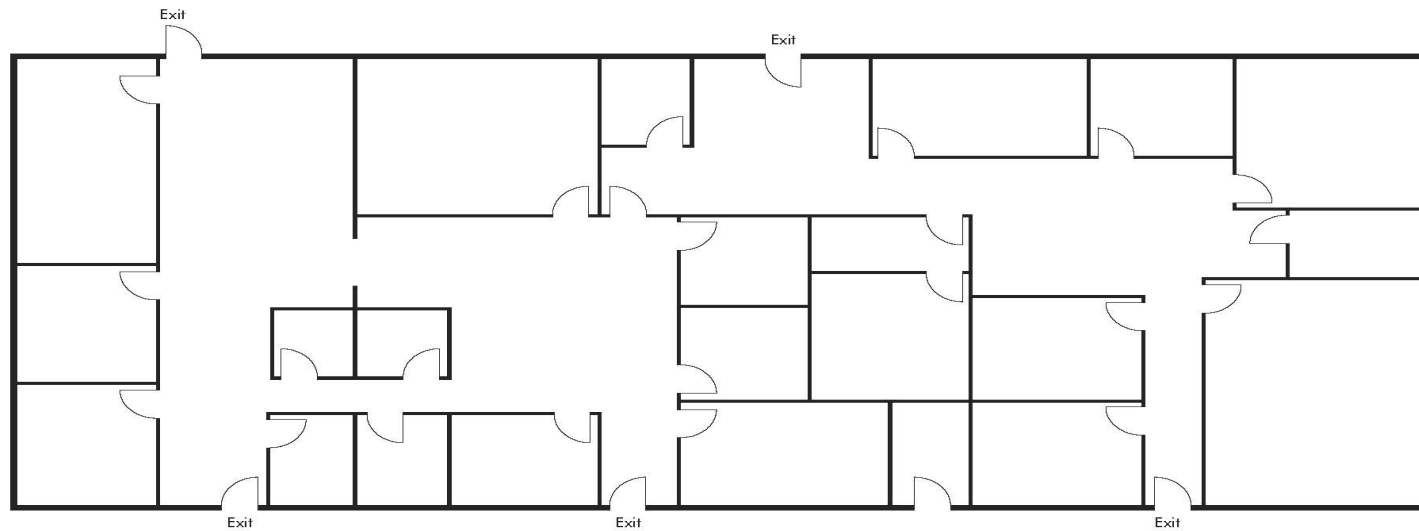


236 CAJON ST - FLOOR PLAN

242 Cajon Street

Floor Plan

Total: 9,787 RSF



242 CAJON ST - FLOOR PLAN

Photos



This is an aerial map of Redlands, California. The map shows a grid of streets, including major thoroughfares like W Colton Ave, W Redlands Blvd, and E Redlands Blvd. A yellow star marks the 'Subject Site' in the central part of the city, near the intersection of W Redlands Blvd and E Redlands Blvd. Other notable features include the Redlands Downtown Metrolink station, several schools (e.g., Franklin Elementary School, McKinley Elementary School), and parks (e.g., Smiley Park, Sylvan Park). The map also shows the Redlands High School and the Redlands University Metrolink station. The city is bordered by Orange to the north and San Gabriel to the south.

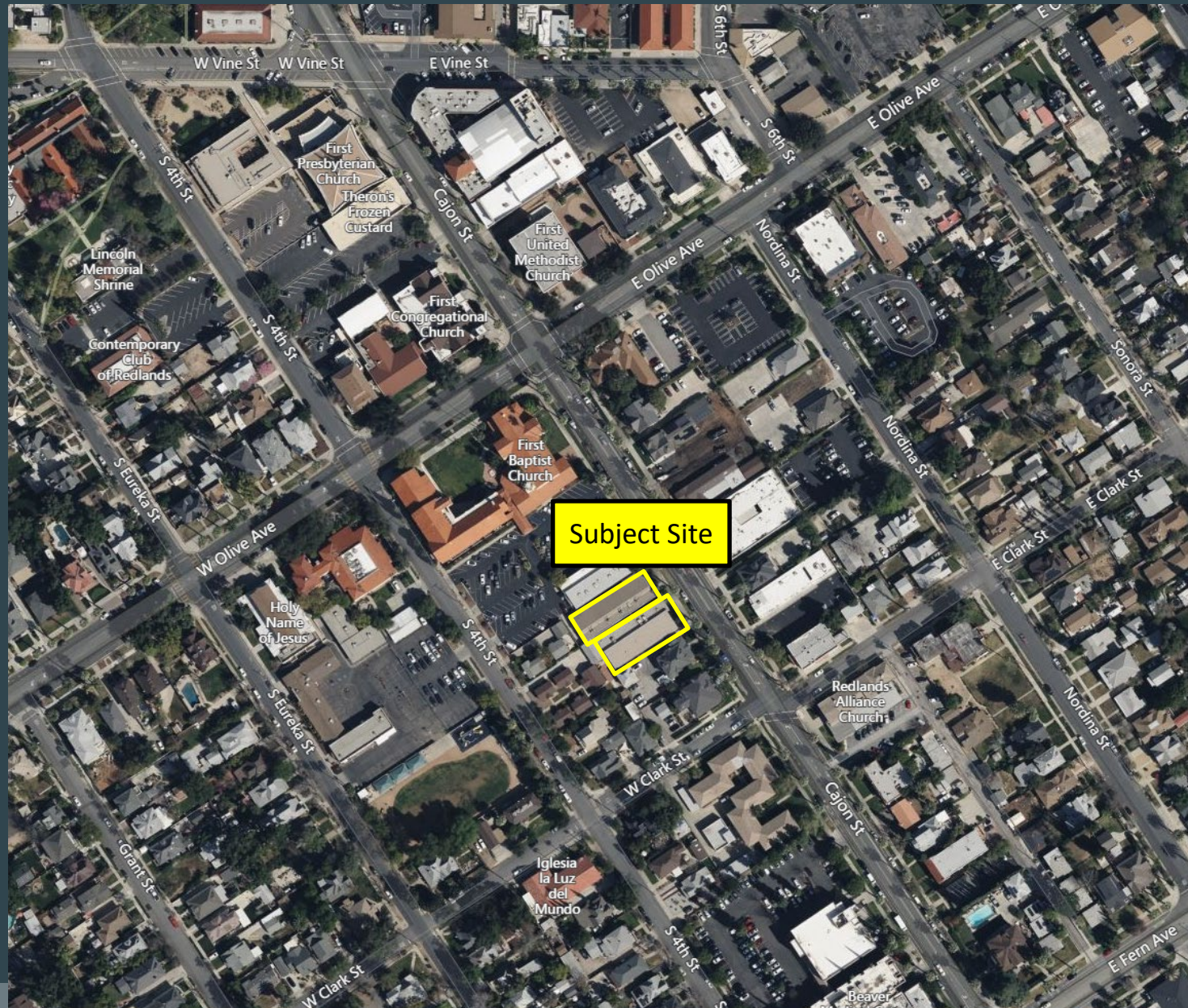
LOCATION

City of Colton

The City of Redlands is proud of its growing role as a center for new business and residential and employment opportunities in the County of San Bernardino. A comprehensive transportation network, a skilled, ready-to-work labor pool, and a viable partnership between business, city, and county government contributes vitality to an already established commerce.

The city is focused on the high quality of living, education, job creation, community health, public safety, housing, retail, recreation, arts and culture, and infrastructure for development that is sustainable over time. Redlands will be a destination for visitors and a home for anyone seeking a sense of community and a high quality of life.

Historically, Redlands has worked hard to make the city one of the best places in Southern California to work, live, and enjoy life and that single goal remains true today. Redlands is a diverse community where tomorrow's contributors pursue their dreams in an attractive and safe environment abundant with opportunities for educational and economic advancement.



FOR SUB-LEASE

For more
information,
please contact:

JOHN OIEN

Senior Vice President

+1 909 418 2135

© 2025 CBRE, Inc. All rights reserved. This information has been obtained from reliable sources but has not been verified for accuracy or completeness. CBRE, Inc. makes no guarantee, representation, or warranty and accepts no responsibility or liability for the accuracy, completeness, or reliability of the information contained herein. You should conduct a careful, independent investigation of the property and verify all information. Any reliance on this information is solely at your own risk. CBRE and the CBRE logo are service marks of CBRE, Inc. All other marks displayed on this document are the property of their respective owners, and the use of such marks does not imply any affiliation with or endorsement of CBRE. Photos herein are the property of their respective owners. Use of these images without the express written consent of the owner is prohibited.

CB