



Prime East Village Corner - Second Avenue & St. Marks Place

## RENT:

Upon Request

## APPROXIMATE SIZE:

**8,980 SF Total**

2,360 SF - Ground Floor  
2,360 SF - Selling Second Floor  
2,360 SF - Selling Basement  
1,900 SF - Finished Landscaped  
Roof Deck

## FRONTAGE:

35' on Second Avenue  
68' on St Mark's Place

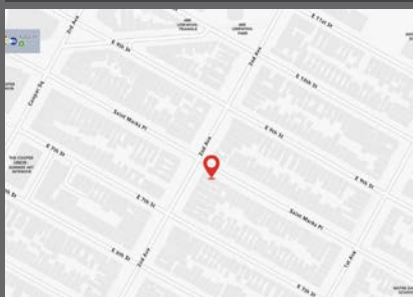
## CEILING HEIGHTS:

17' - Ground Floor  
13' - Second Floor  
11' - Selling Basement

## POSSESSION:

Arranged

ADA Accessibility throughout all  
floors (Including roof access)



## Flagship Corner Retail

All Uses Considered

New Elevator, Selling Basement, Selling 2nd Floor  
and Finished Landscaped Roof Deck



## Major Capital Improvements Completed

For inquiries contact Zach Levine: 646.943.3125 / Zach@iconrealtymgmt.com



## Ground Floor Photos

### Major Capital Improvements Include:

- Complete Gut Renovation
- New structural steel
- New mechanicals
- New floors and ceilings
- New windows
- Two Staircases
- New private landscaped roof deck
- New Elevator servicing Ground Floor, 2nd floor, Roof and Basement
- HVAC on Ground Floor, 2nd floor, and Basement
- ADA Accessibility throughout all floors (Including roof access)
- Bathrooms on every floor (Ground, 2nd floor & Basement)

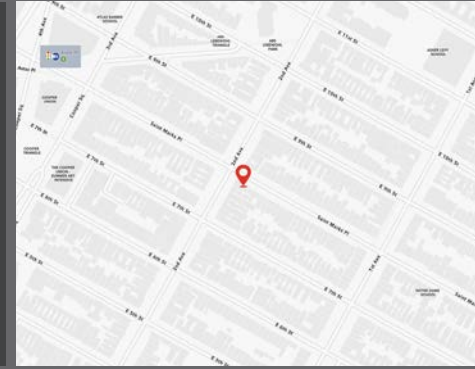




## Second Floor Photos

### Local Retail, Restaurants & Landmarks:

- Tompkins Square Park , Washington Square Park
- NYU, Cooper Union, Parsons, School of Visual Arts
- Union Square
- Astor Place 6 Train, 8th St. R & W, M15 & M8 Buses, CitiBike
- Cafe's & Diners: B&H Dairy, Veselka, Cafe Maud, La Cabra, Kona Coffee, Porto Rico Roasters, Hey Tea and more.
- 100+ Local Bars: McSorley's, Long Pour, Ten Degrees, Superbuono, KGB Bar, Proletariat, Barcade and many more.
- Local Gyms: Crunch, Blink, Life Time, Soul Cycle, Equinox, 14th Street Y and more.
- Movies & Theater: Village East Angelika, The Public Theater, AMC, Regal, Theater for the New City, BATSU!
- Retail: Toy Tokyo, Target, MUJI, Westside Market, Wegmans, Target, Trader Joe's, Buffalo Exchange and more.
- Dining: Superiority Burger, Foul Witch, Nudibranch, Jazba, Szechuan Mountain House, Smithereens, 7th Street Burger, Momofuku Noodle Bar, Gyu Kaku and many more.



Elevator services basement, ground floor, second floor and private roof deck.





# 130 Second Avenue

East Village



Private Roof Deck, Basement and Staircases



Selling Basement



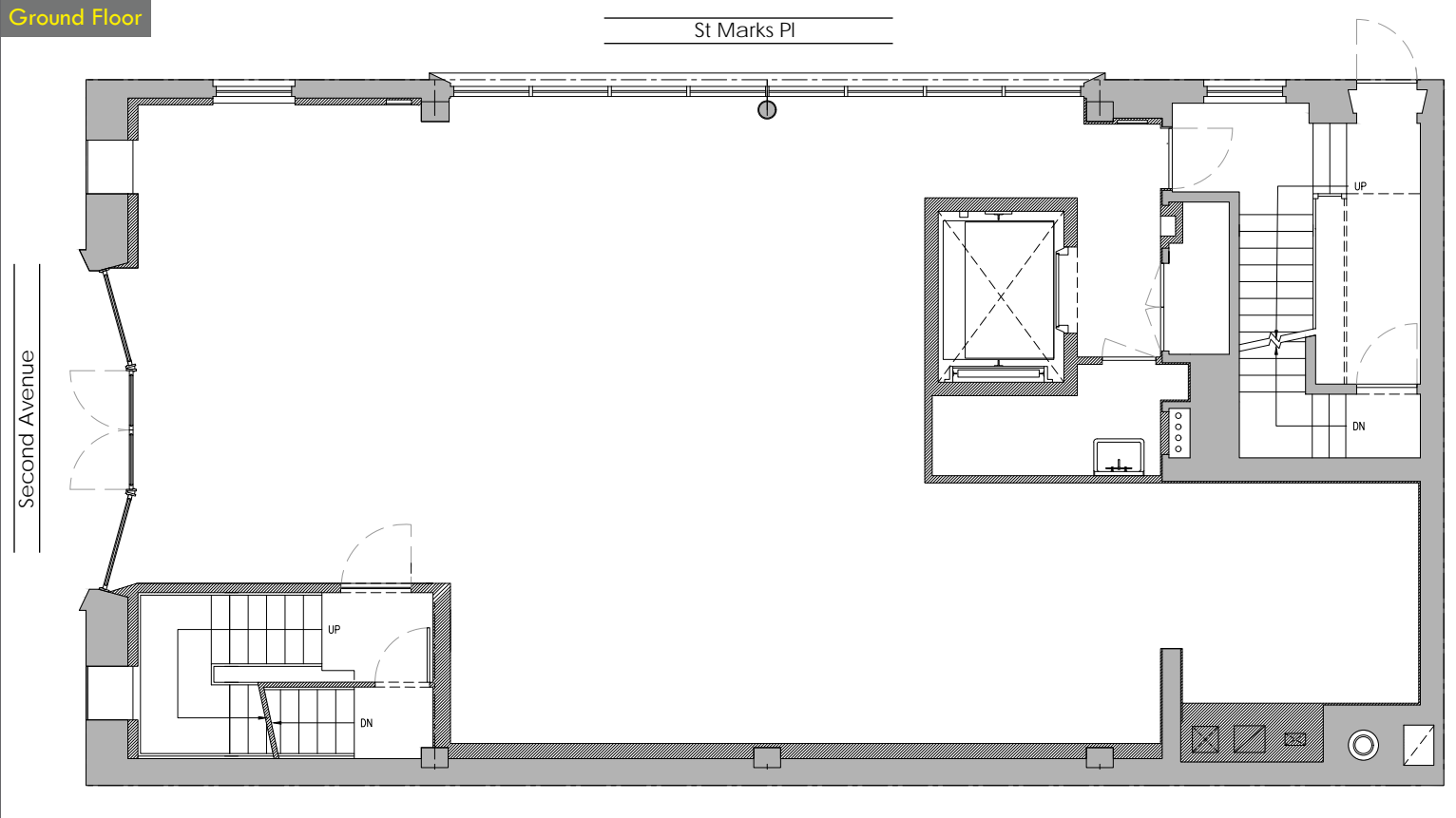
Selling Basement



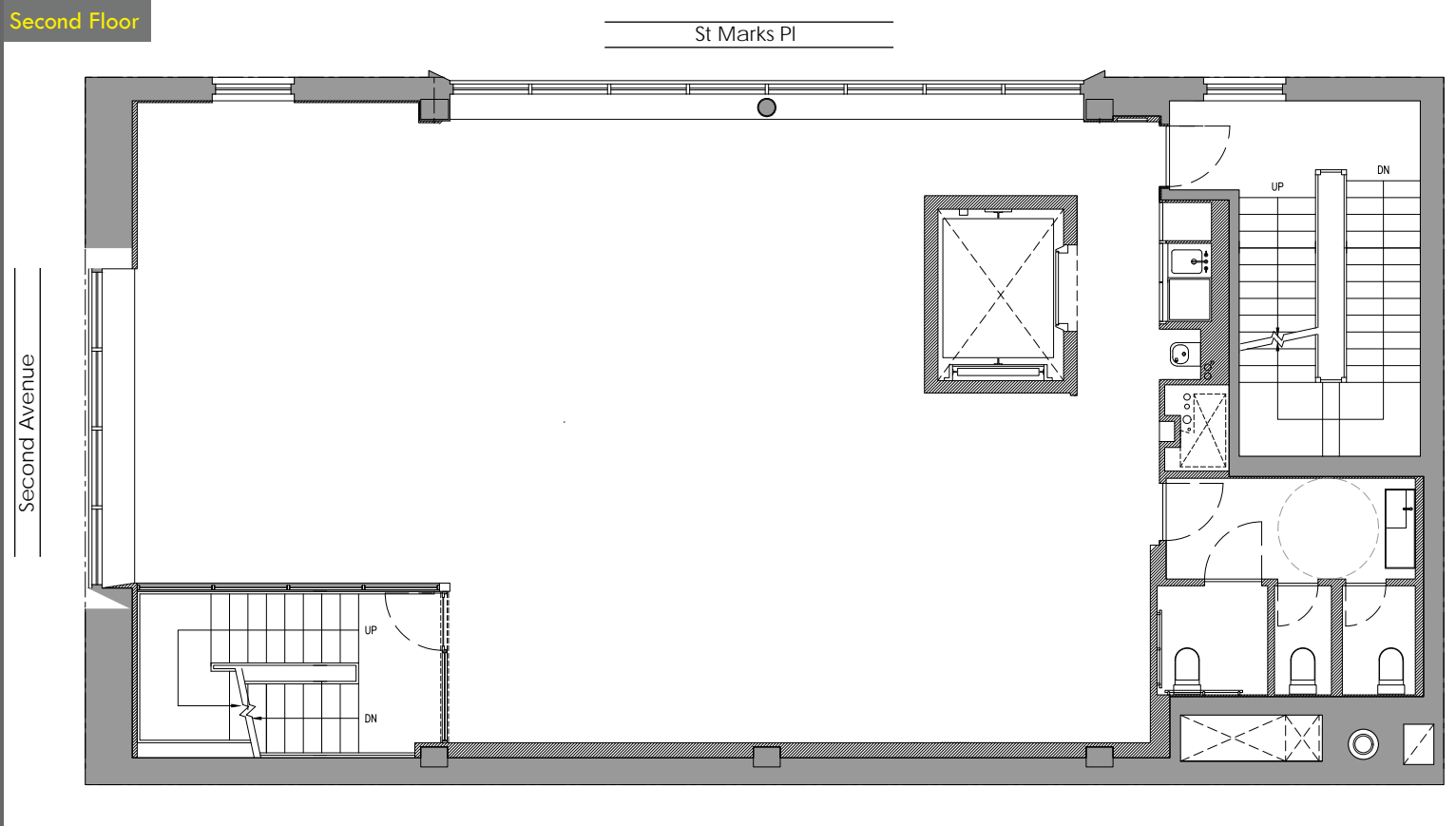
Selling Basement



## Ground Floor



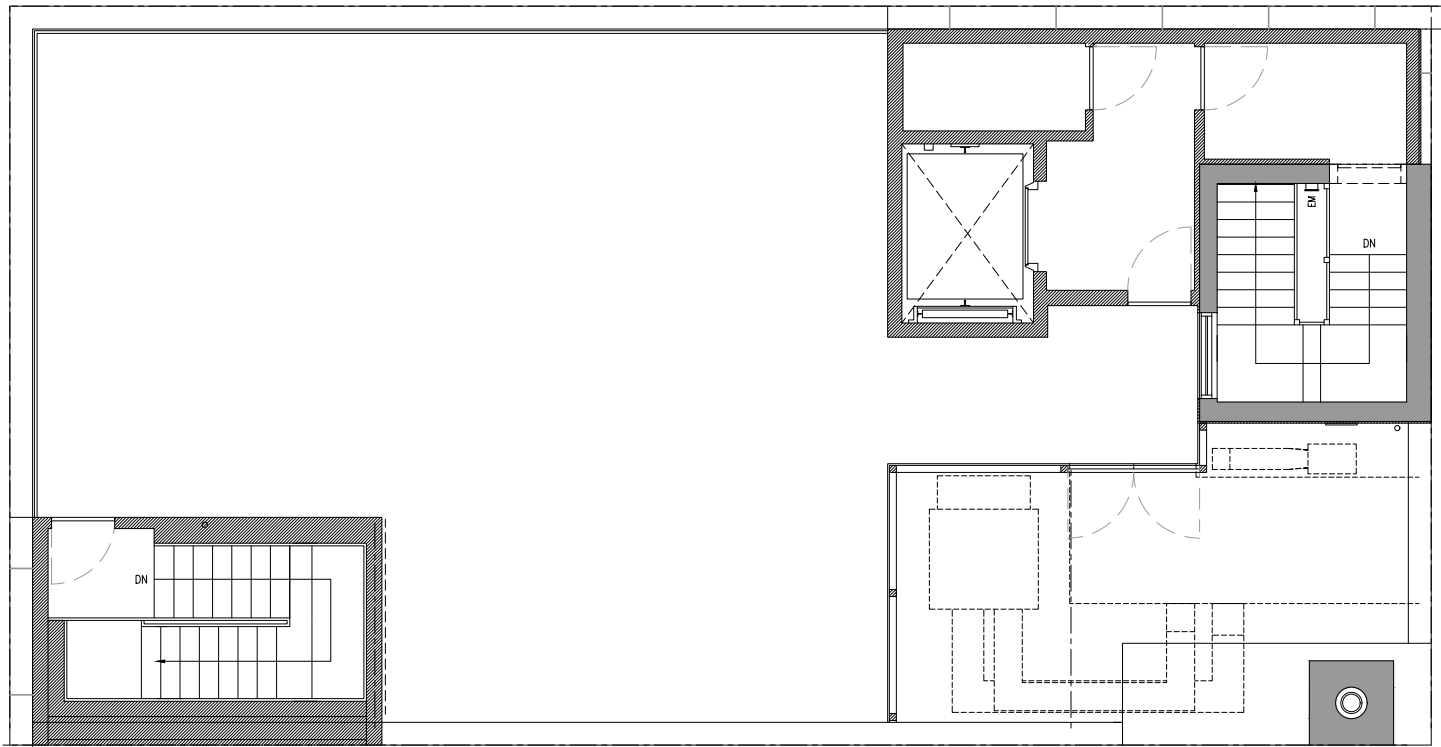
## Second Floor



## Private Roof Deck

St Marks Pl

Second Avenue



## Basement

St Marks Pl

Second Avenue

