

# Office Suites

**07** LEASED

**06** LEASED

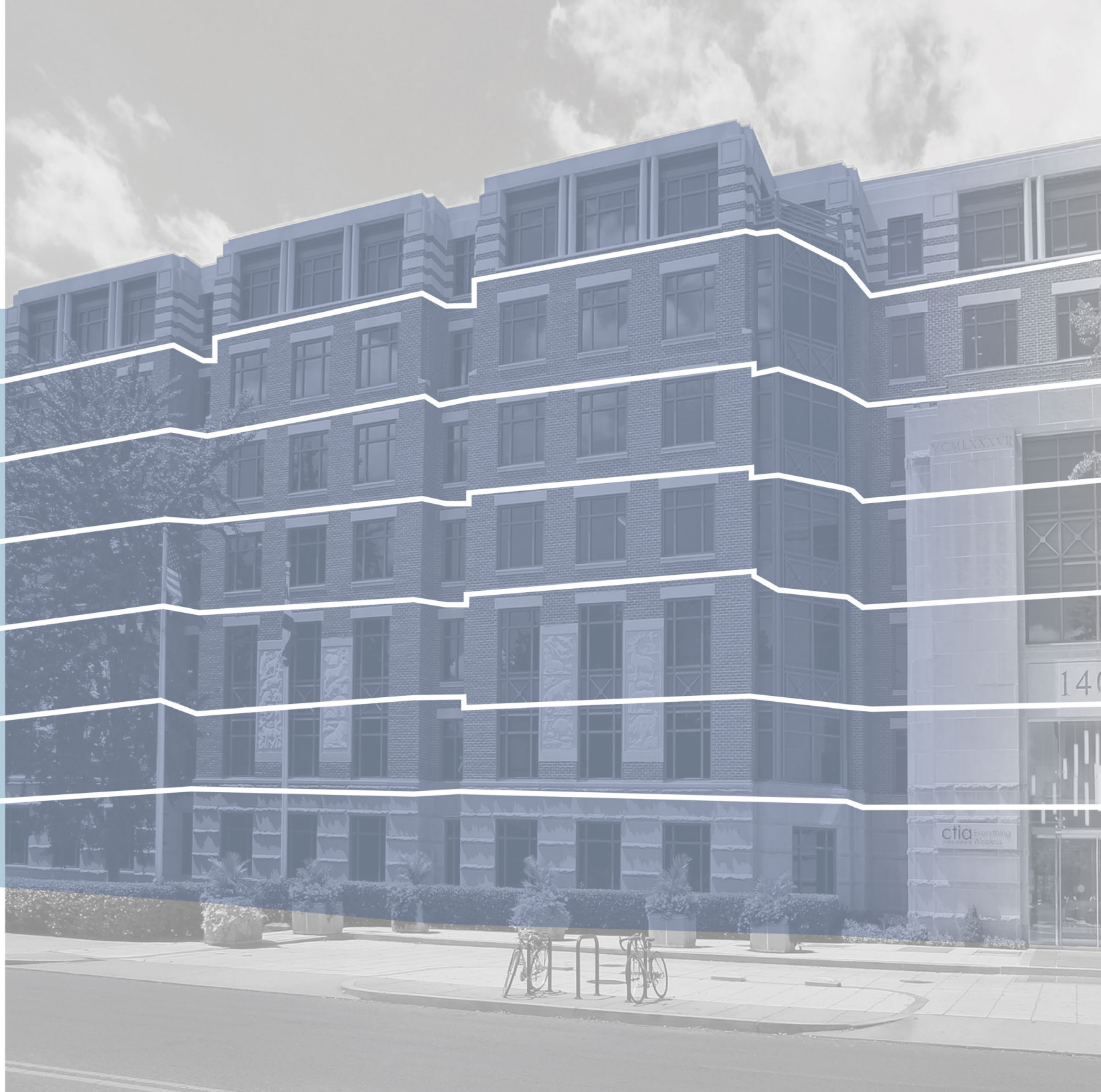
**05** 2,540 - 14,664 RSF  
AVAILABLE

**04** 6,382 RSF  
AVAILABLE

**03** LEASED

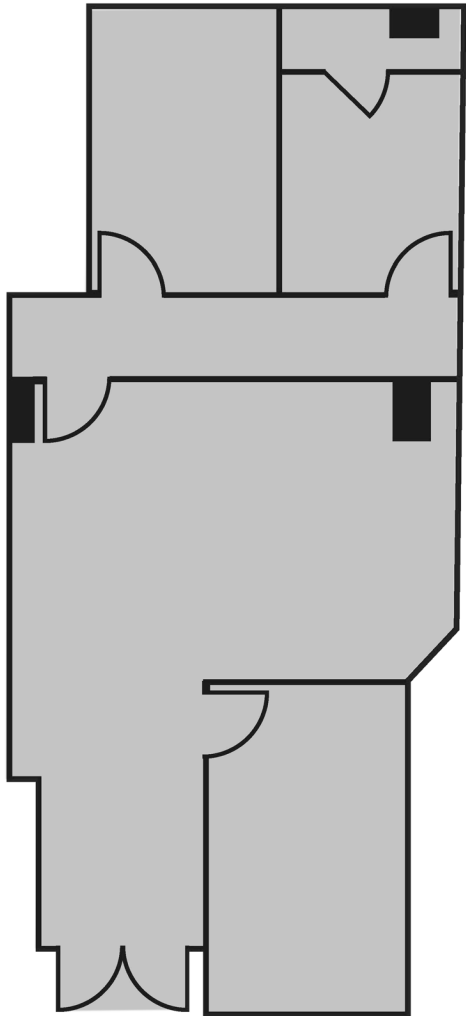
**02** 3,603 - 20,357 RSF  
AVAILABLE

**B1** 1,700 RSF  
AVAILABLE



1,700 RSF

# Suite B-03



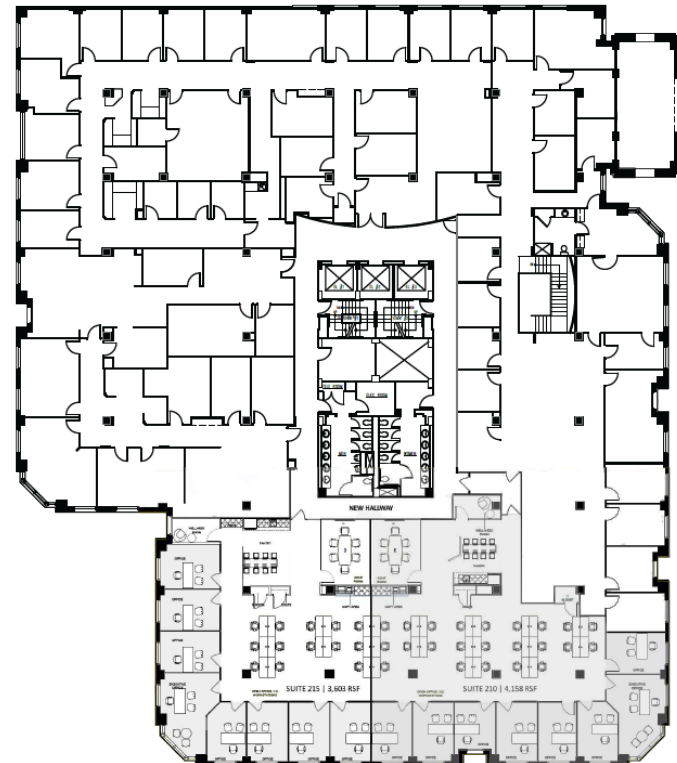
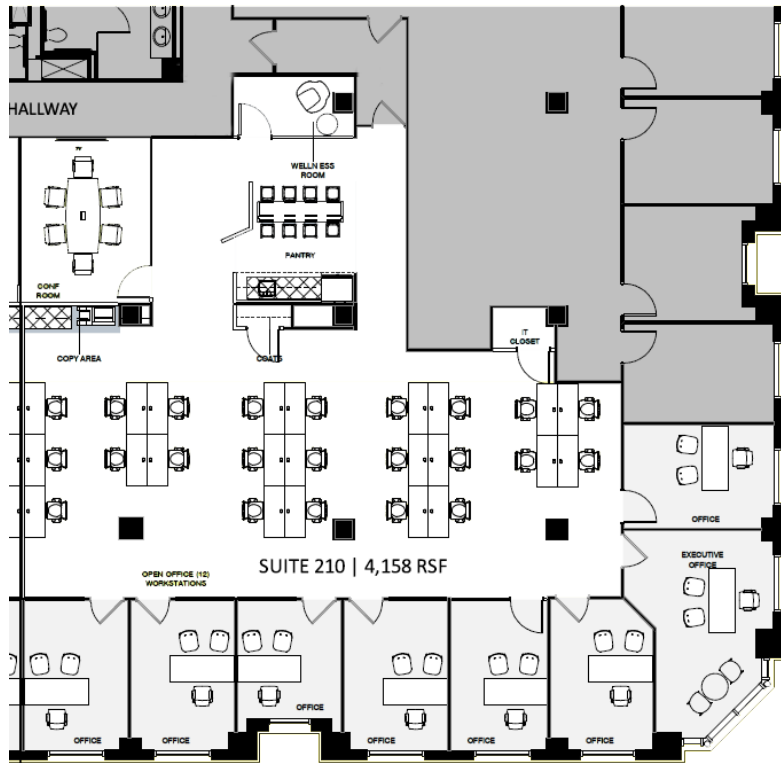
- Basement/Lower-Level space
- Double door suite entry
- 2 private offices with glass sidelights
- Reception area
- Open area
- Steps to new fitness and wellness center and Early Bird Café



4,181 RSF

# Suite 210

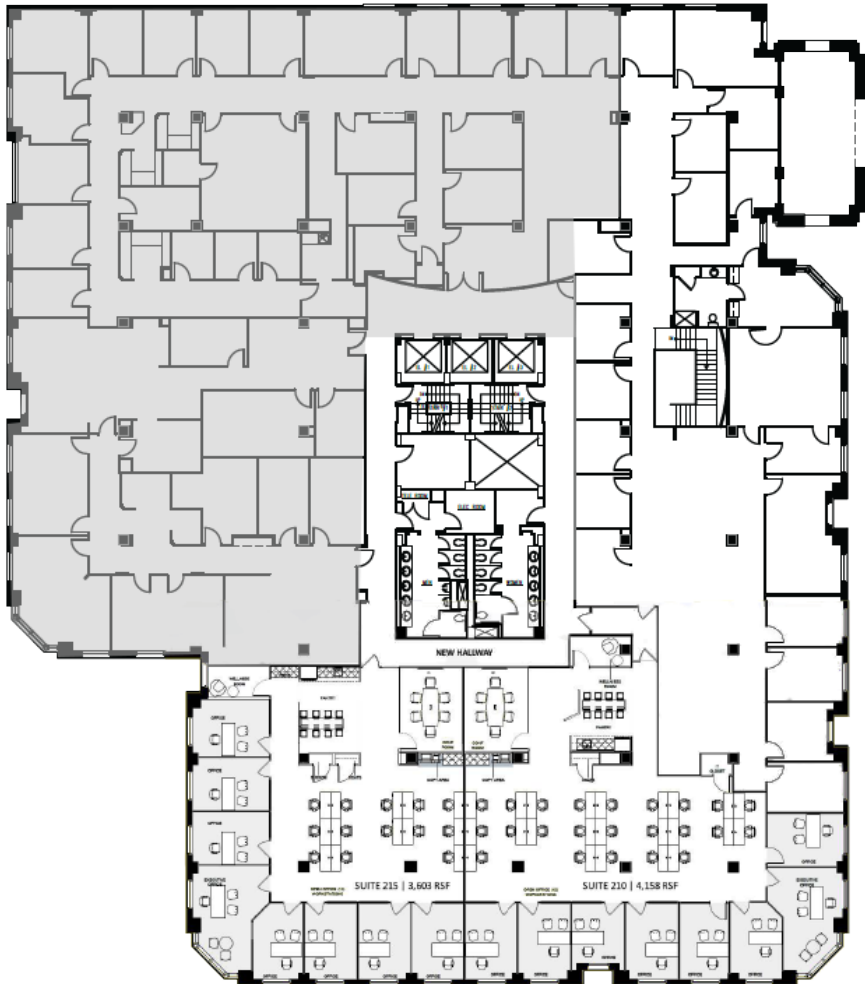
- Conference Room
- Corner Executive Offices
- Private Offices and Open Area Workstations
- Kitchenette
- Wellness Room





12,596 RSF

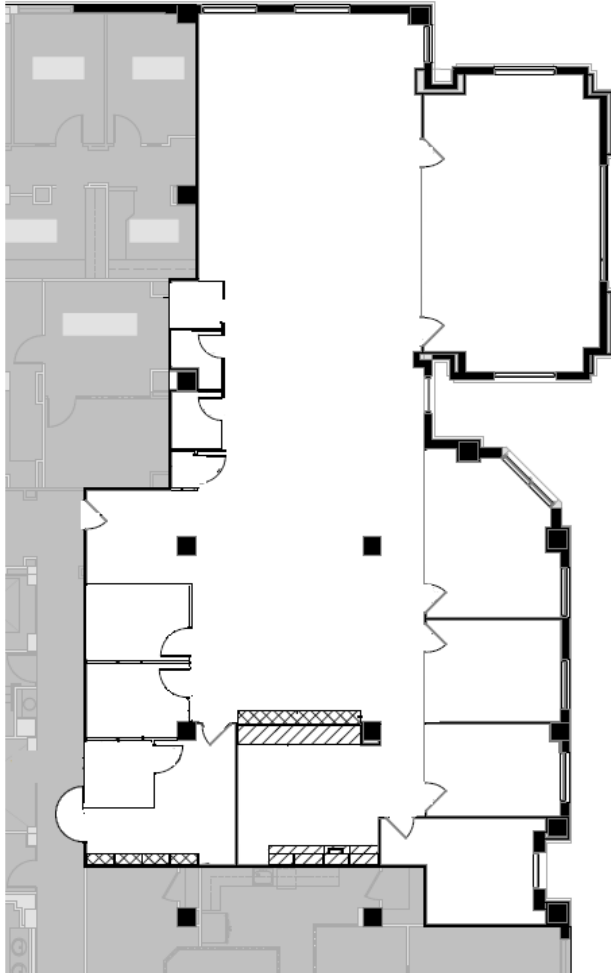
# Suite 225



- Move-in ready 2nd floor space
- Prominent direct elevator exposure
- Ample glass suite entry frontage
- Combination of open and office-intensive layout to accommodate various users
- Expansion options up to approximately 20,357 RSF
- Broker bonus opportunity of \$15,000 for deals executed by year end (2024)
- Office intensive layout
- Conference Rooms
- Central Air and Heating
- High Ceilings
- Natural Light
- Kitchen
- After Hours HVAC Available
- Emergency Lighting
- Bicycle Storage

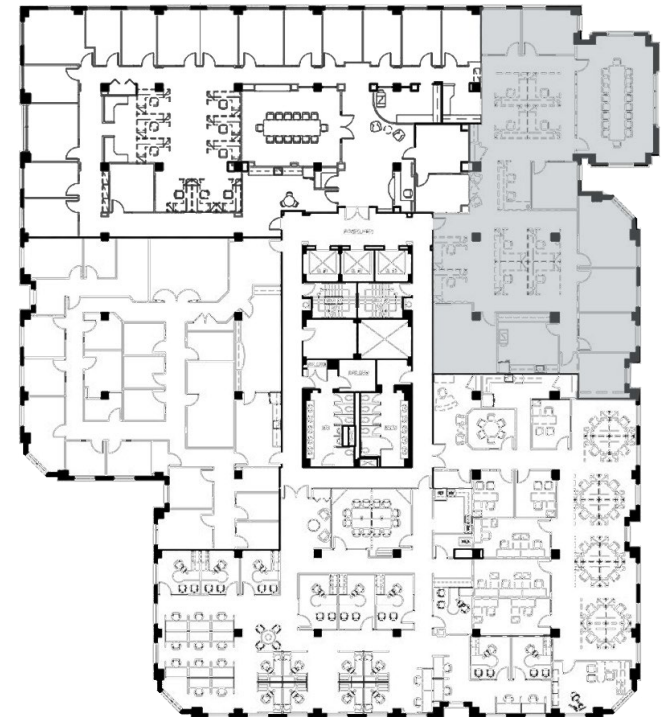
6,382 RSF

# Suite 410



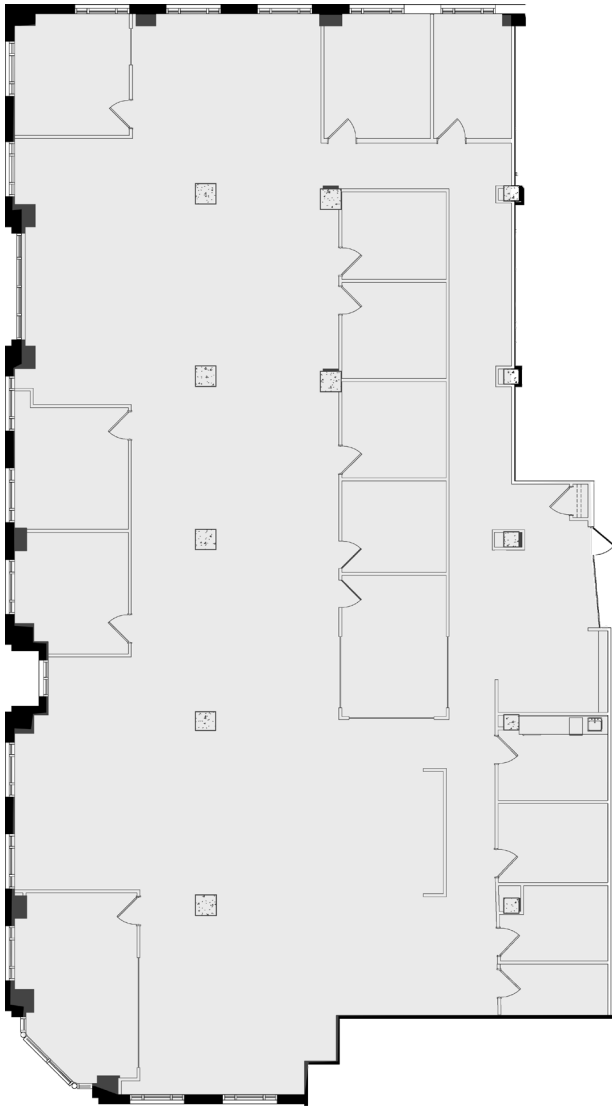
16TH STREET, N.W.

- Direct Elevator Exposure
- Standard and Executive Windowed Offices
- Reception Area
- Conference Room
- Kitchenette
- High Ceilings
- Storage and Coat Closets
- Flexible Lease Terms & Rates
- 16<sup>th</sup> Street views

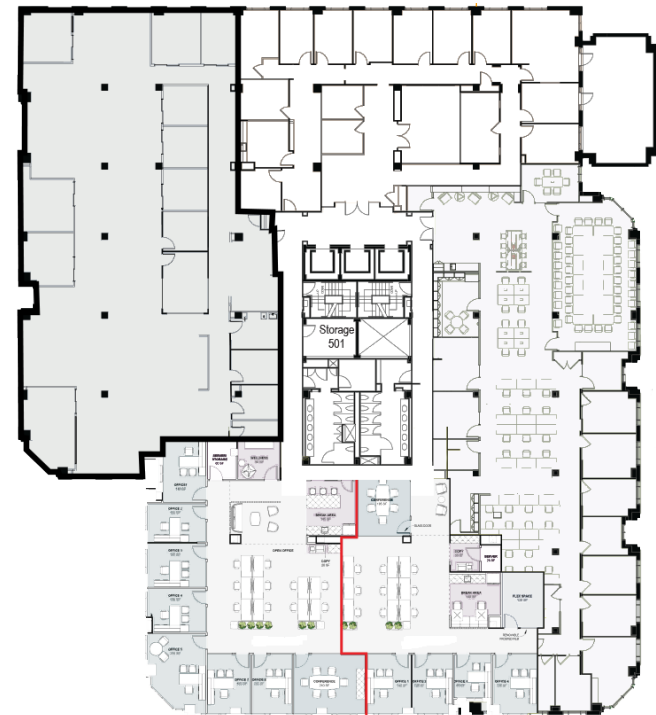


8,593 RSF

# Suite 510



- Expansive windowline with sweeping courtyard and 16th Street views
- Flexible lease terms and rates
- Upper level (5th floor) office suite
- Combination of 2 windowed floor-to-ceiling glass conference room/executive offices
- Additional perimeter windowed offices
- Large open area for workstations/cubicles/benching
- work room
- 2 pantries
- Storage closets

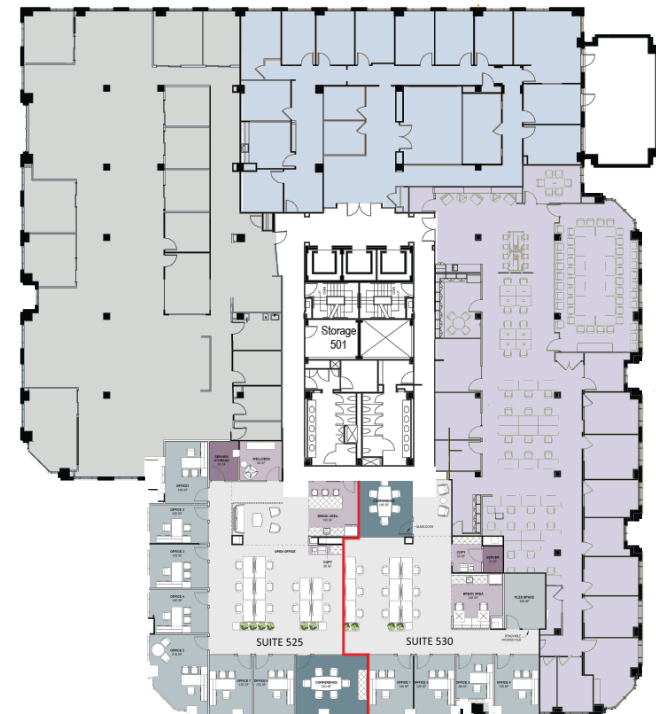


3,531 RSF

# Suite 525



- > 5<sup>th</sup> floor corner office
- > 7 private offices
- > Executive office with courtyard views
- > Large open work area
- > Wellness room
- > Kitchenette with microwave, dishwasher and breakfast bar
- > Lounge/reception area by entrance
- > Conference room





2,540 RSF

# Suite 530



- > New office on the 5<sup>th</sup> floor
- > Efficient floorplan
- > 4 private offices
- > Flex room that can serve as a 5<sup>th</sup> office, huddle room or storage
- > Open work area
- > Kitchenette with microwave and dishwasher
- > Conference room

