

FOR LEASE

Grace Ave Contractor's Plaza | Office Space
1311 SE Grace Ave | Battle Ground, WA 98604



900 Washington St, Suite 850, Vancouver, WA
360.750.5595 | www.fg-cre.com



Property Highlights

Building 1 – 763 SF Second Floor Office

Rental Structure

\$850/mo. (Base Rent)

\$280/mo. (Estimated NNN Charges)

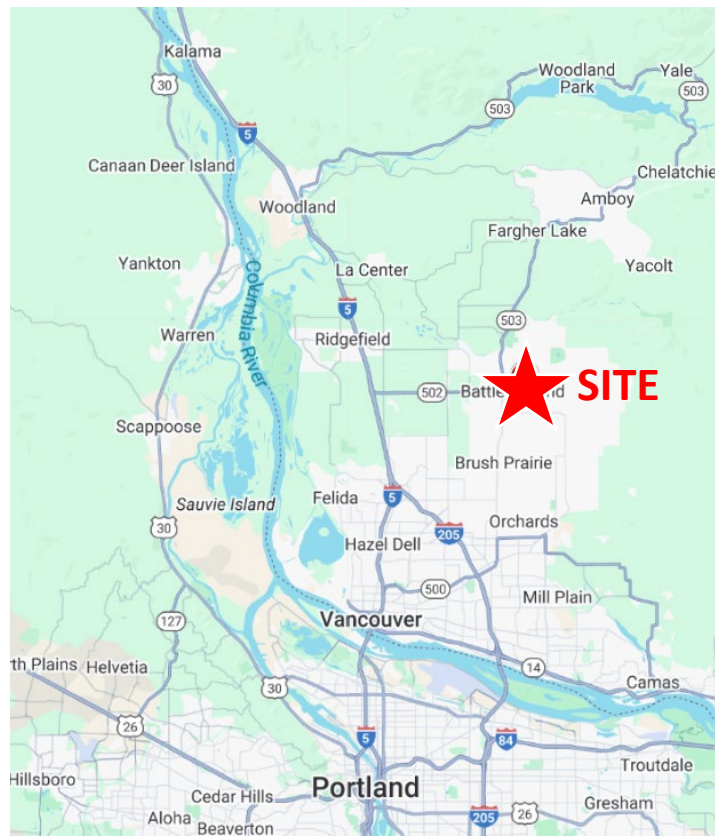
= \$1,130 Total Monthly Rent (Janitorial not included)

Key Features

- ◆ Located in a well-maintained business park
- ◆ Ideal for small business use
- ◆ Great natural light
- ◆ Parking: Ample on-site

FOR MORE INFORMATION:

Garret Harper, SIOR, CCIM
360.597.0572 | gharper@fg-cre.com



FOR LEASE

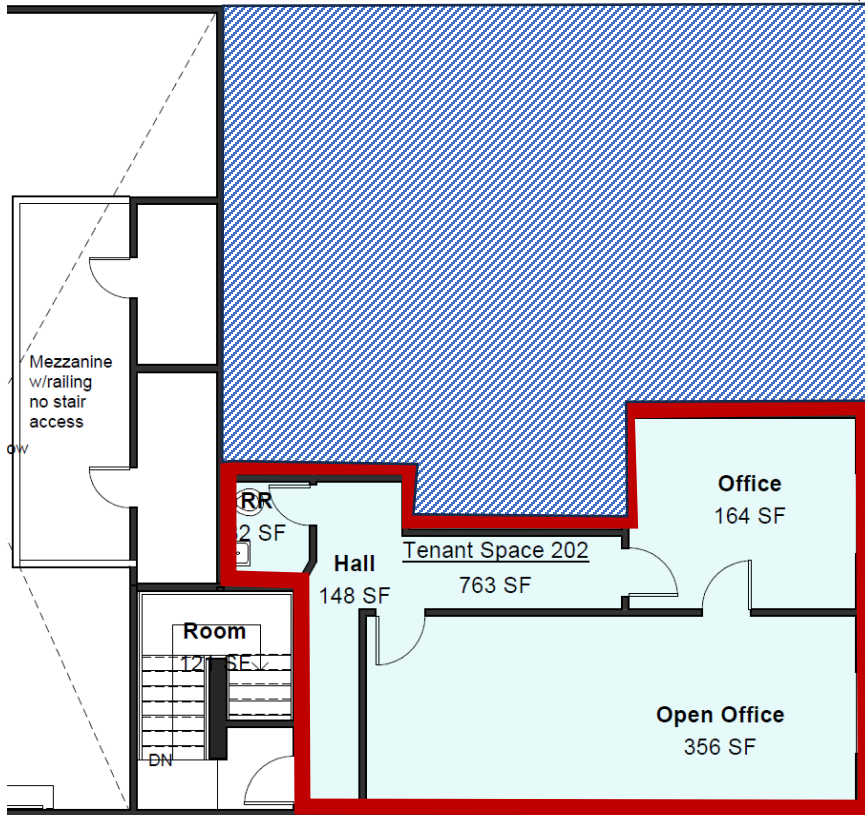
Grace Ave Contractor's Plaza | Office Space

1311 SE Grace Ave | Battle Ground, WA 98604



900 Washington St, Suite 850, Vancouver, WA
360.750.5595 | www.fg-cre.com

Suite 202 | 763 SF | Second Floor of Building 1



This statement with the information it contains is given with the understanding that all the negotiations relating to the purchase, rental or leasing of the property described above shall be conducted through this office. The above information, while not guaranteed, has been secured from sources we believe to be reliable.