

27501 Hildebrandt Rd, Romulus, MI 48174

77,500 SF - Available November 1, 2025

Peter Rogers

Senior Vice President

+1 248 351 2064

peter.rogers@cbre.com



Wyen Koan, CCIM

Senior Associate

+1 567 420 9990

wyen.koan@cbre.com



27501 Hildebrandt Rd
Romulus, MI 48174

For Sublease

Property Details

- + Size: 77,500 SF
- + Rate: \$7.50 NNN
- + Available November 1, 2025
- + Lease Term: Sublease through November 15, 2026
- + Office Area: 9,264 SF
- + One (1) grade level door (14' x 16')
- + Fifteen (15) loading docks (10' x 10')
- + Ceiling Height: 30 Feet
- + Infloor levelers and shelters
- + ESFR sprinklers
- + 20 trailer spaces available



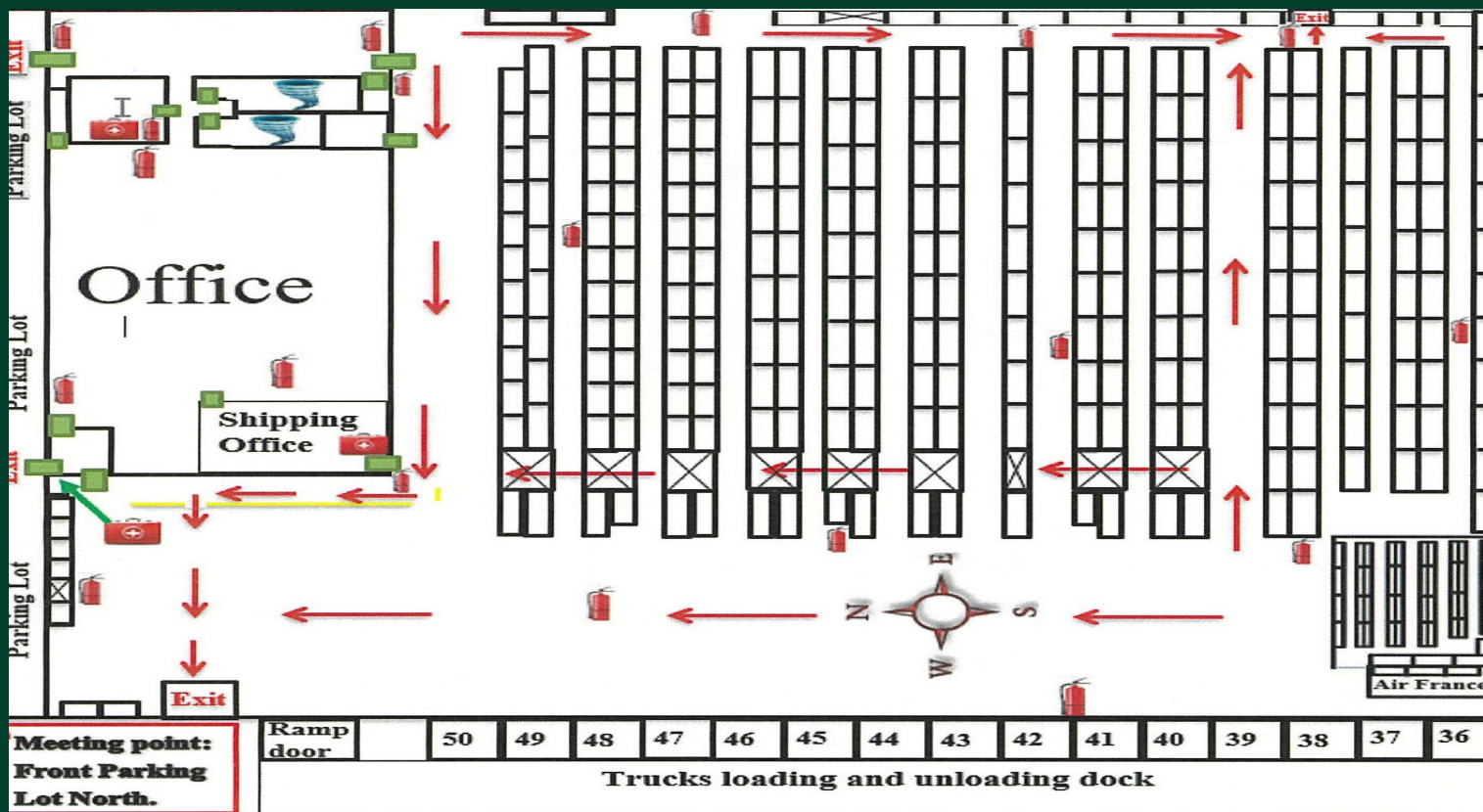
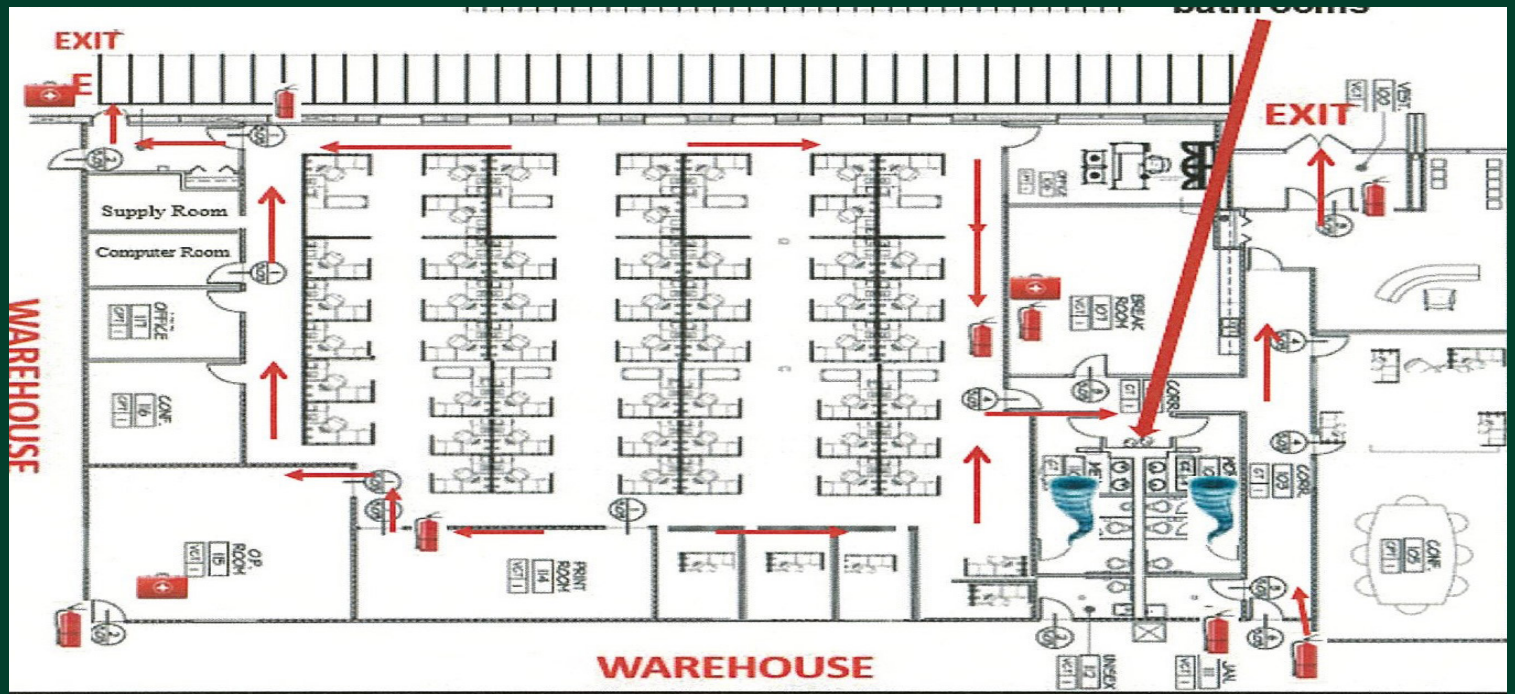
27501 Hildebrandt Rd
Romulus, MI 48174

For Sublease

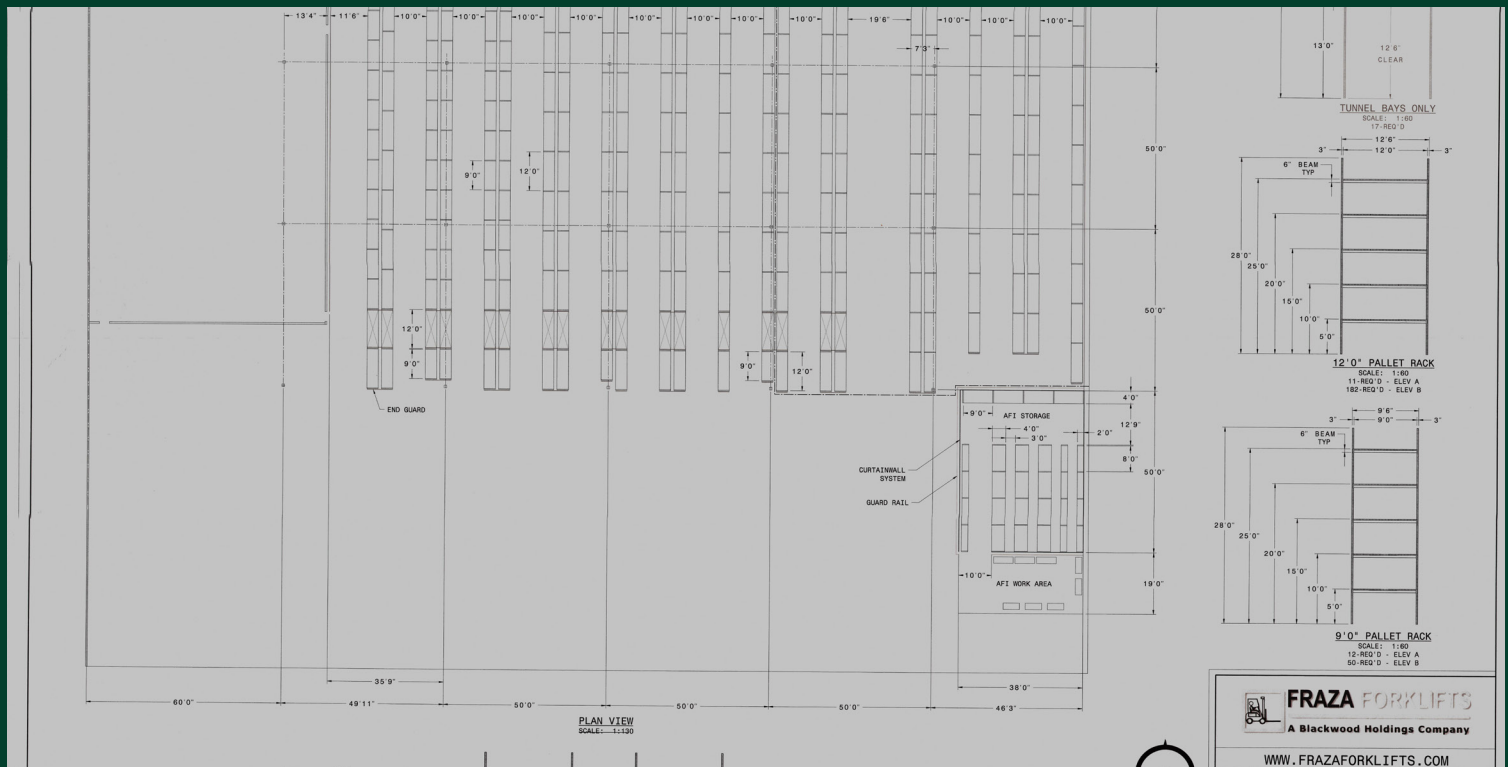
Interior View



Floor Plan



Floor Plan/Racking



Contact Us

Wyen Koan, CCIM
Senior Associate
+1 567 420 9990
wyen.koan@cbre.com

© 2025 CBRE, Inc. All rights reserved. This information has been obtained from sources believed reliable, but has not been verified for accuracy or completeness. You should conduct a careful, independent investigation of the property and verify all information. Any reliance on this information is solely at your own risk. CBRE and the CBRE logo are service marks of CBRE, Inc. All other marks displayed on this document are the property of their respective owners, and the use of such logos does not imply any affiliation with or endorsement of CBRE. Photos herein are the property of their respective owners. Use of these images without the express written consent of the owner is prohibited.