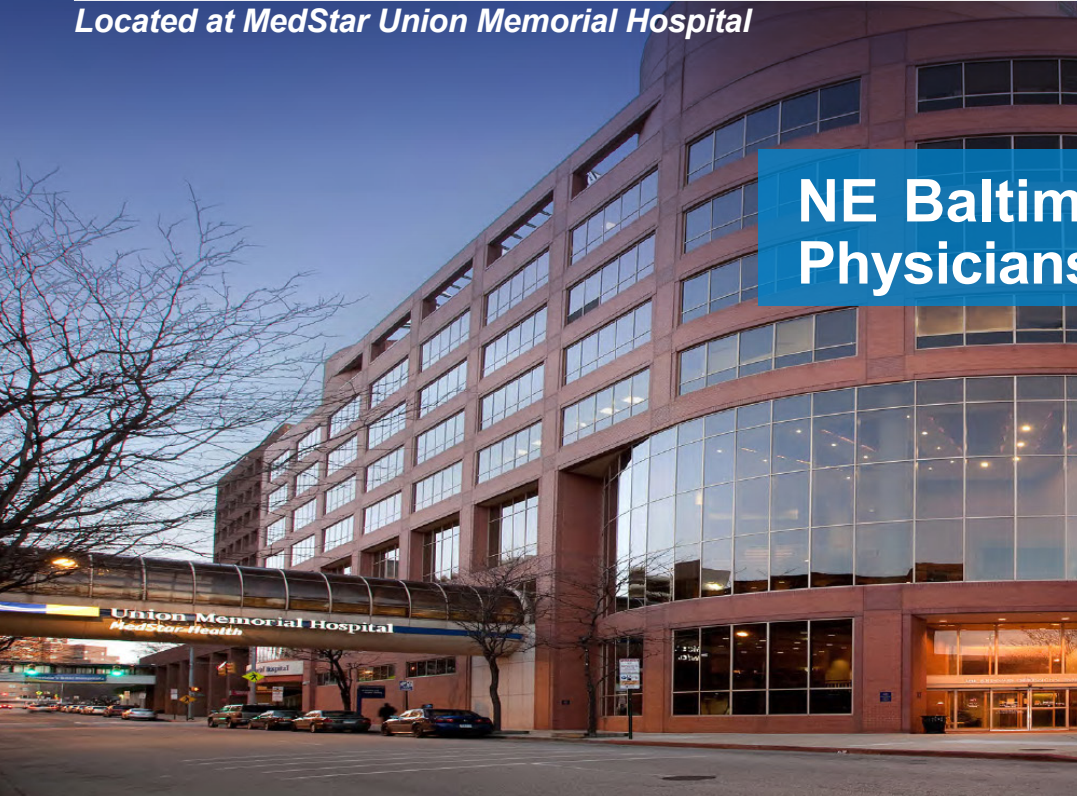


# Johnston Professional Building

Located at MedStar Union Memorial Hospital

NE Baltimore's Home for  
Physicians and Healthcare



- 80,294 SF, 8 Story Class B Medical Office Building
- Connected to MedStar Union Memorial Hospital and Curtis National Hand Center
- Easy access to I-83, Charles Street and Belair Road

- Covered garage parking connected to the building via covered walkway
- Name brand mix of healthcare providers, "built-in" referral source
- Surrounded by cutting edge medical research community

## Building Features

- Move-in ready medical suites
- Multi-specialty Tenant Base
- Build-to-suit improvement packages
- Public transit bus stop directly in front of the building
- New electronic tenant directory

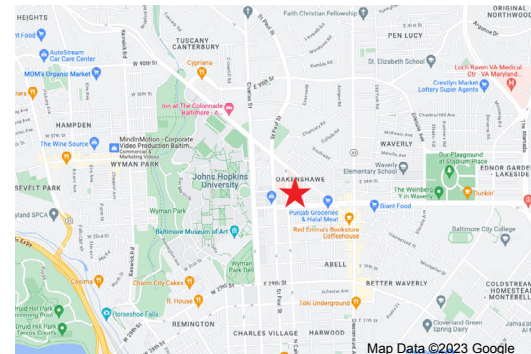
**OWNED AND OPERATED BY**



**\$38 PSF Full Service**

+

**Generous Tenant Improvement Packages**



## Building Highlights



On-campus of  
MedStar Union  
Memorial Hospital



On-campus lab  
and pharmacy



Convenient  
covered parking  
garage

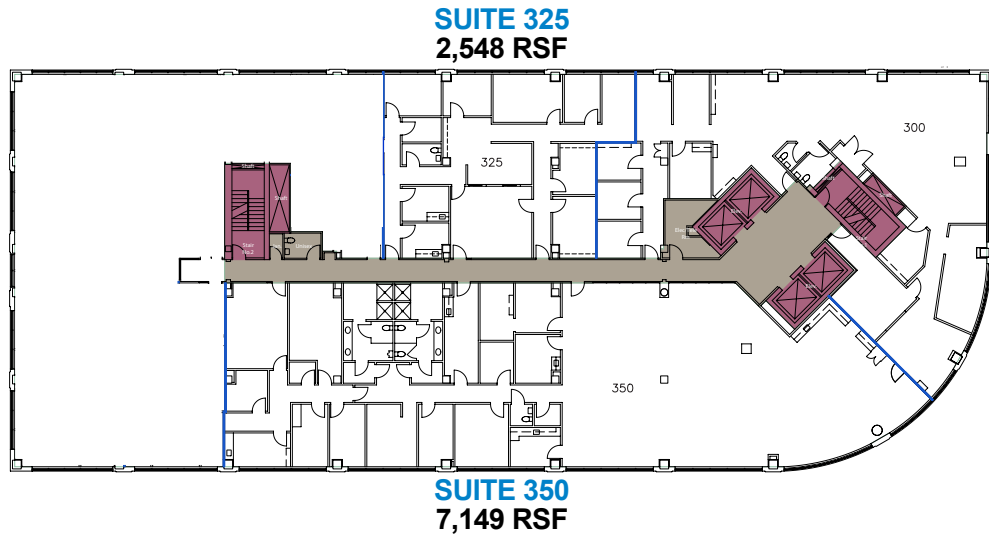


Physician  
Community Built-In  
Referral Sources

# JOHNSTON PROFESSIONAL BUILDING AVAILABILITY

## THIRD FLOOR

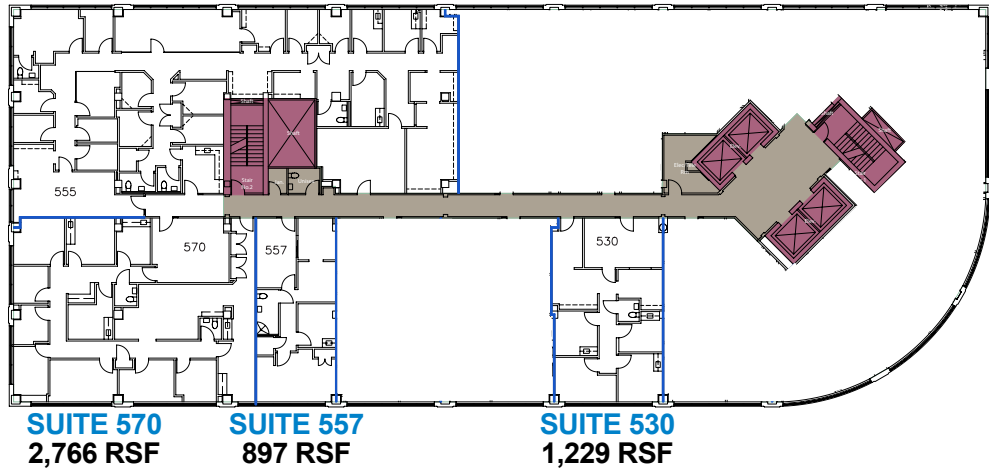
Up to  
13,793 RSF



## FIFTH FLOOR

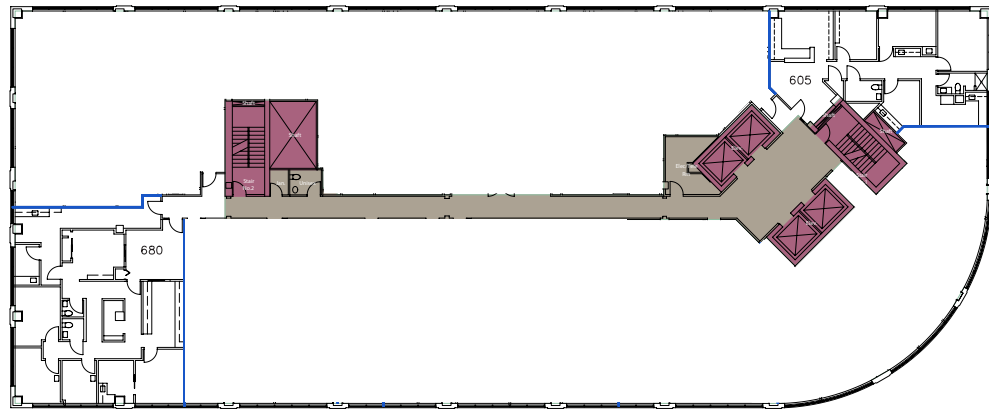
Up to  
8,370 RSF

**SUITE 555**  
4,707 RSF



## SIXTH FLOOR

**SUITE 680**  
2,050 RSF



For more information or to schedule a property tour, please contact:

**SARAH FEITEL-SANDERS:** 301.366.3879 | [sfeitel@hprgrealty.com](mailto:sfeitel@hprgrealty.com)

**LUKE POULOS:** 301.395.7108 | [lpoulos@hprgrealty.com](mailto:lpoulos@hprgrealty.com)

[HPRGrealty.com](http://HPRGrealty.com)



This document/email has been prepared by HPRG for advertising and general information only. HPRG makes no guarantees, representations or warranties of any kind, expressed or implied, regarding the information including, but not limited to, warranties of content, accuracy and reliability. Any interested party should undertake their own inquiries as to the accuracy of the information. HPRG excludes unequivocally all inferred or implied terms, conditions and warranties arising out of this document and excludes all liability for loss and damages arising there from. This communication is not intended to cause or induce breach of an existing listing agreement.

