

CHELSEA SQUARE

60 ARLINGTON

97-101 2ND

70 EVERETT

80 EVERETT

90 EVERETT

105 EVERETT

45-47 SPRUCE STREET

8,733 SF AVAILABLE

FLEX/INDUSTRIAL



CHELSEA SQUARE

Chelsea Square in Chelsea, MA is seven-(7) building +/-260,000 rentable square foot mixed use urban campus property and home to such companies as Chelsea Clock, Eastern Bank and a satellite location for Bunker Hill Community College. Chelsea Square can accommodate a variety of user types ranging from medical to office, light manufacturing and biotech.

Exceptionally well located with the Boston skyline as its backdrop, Chelsea Square is just minutes to downtown and Boston's CBD and Logan International Airport with immediate access to the MBTA's Silver Line and Commuter Rail.

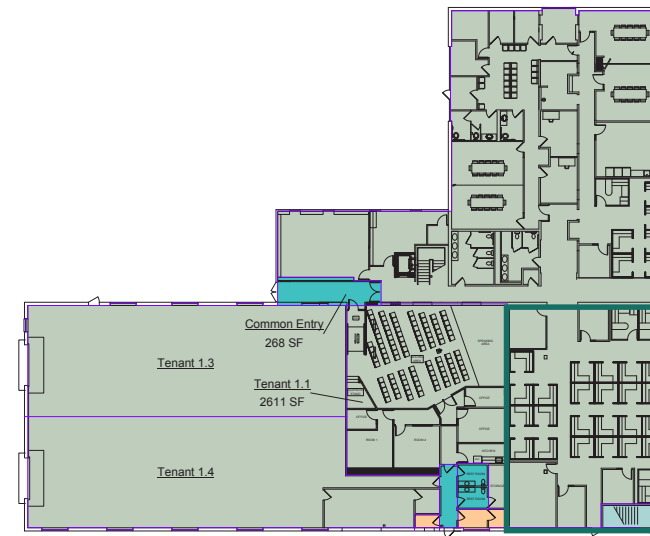
Area amenities include countless dining options such as Chelsea Station Bar & Grill, Dunkin Donuts, and Five Guys. The adjacent Mystic Mall is anchored by Market Basket with other well know retailers such as Home Goods and T.J. Maxx. Nearby lodging options include the Hampton Inn, Hilton Double Tree and the Encore Boston Harbor. Chelsea Square amenities include a grab and go café, on-site property management, an Eastern Bank branch and an MBTA Silver Line stop.

45-47 SPRUCE STREET

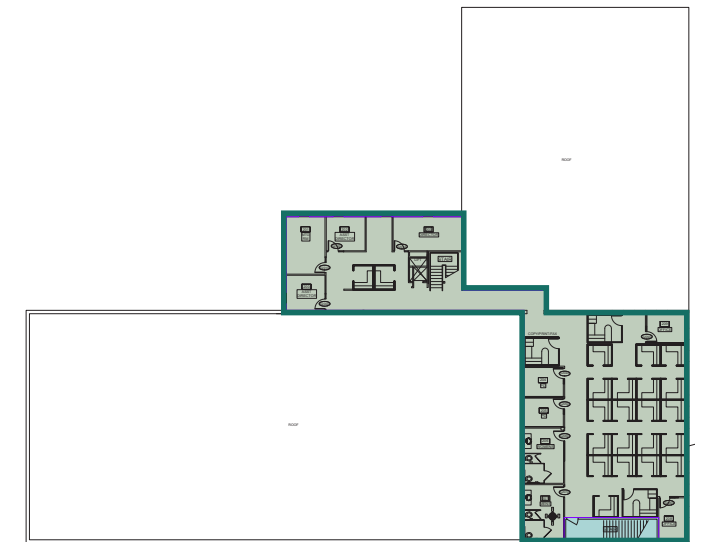
Availability:	8,733 SF	Tel/Data:	Comcast & Verizon
RBA:	27,000 SF	Power:	1,000 Amps, 120/208 Volt, 3-phase
Stories:	Two	Clear Height:	18'
Year Built:	1970	Loading:	Two (2) grade-level loading doors
Parking:	3/1,000 SF		






45-47 SPRUCE STREET

FLOOR 1
4,000 SF AVAILABLE



FLOOR 2
4,733 SF AVAILABLE



-  **5 MIN. WALK**
TO CHELSEA STATION
(COMMUTER RAIL & SILVER LINE)
-  **15 MIN. DRIVE**
TO BOSTON LOGAN AIRPORT
-  **0.1 MILE**
TO ROUTE 1 NORTH & SOUTH
-  **3 MILES** TO I-93 SOUTH **4 MILES** TO I-93 NORTH
-  **5 MILES**
TO I-90 MASS PIKE

 **CVS pharmacy**

 **DUNKIN'**

 **CHELSEA**

Encore
BOSTON HARBOR



CHELSEA SQUARE

FOR MORE INFORMATION PLEASE CONTACT:

CHRIS CURLEY
Excutive Vice President
617.457.3211
ccurley@hunnemanre.com

TYLER EWING
Excutive Vice President
617.457.3281
tewing@hunnemanre.com

PETER BEAN
Excutive Vice President
617.457.3238
pbean@hunnemanre.com

MIKE ALLEN
Vice President
617.457.3276
mallen@hunnemanre.com



303 Congress Street, Boston, MA 02210 / 617.457.3400 / www.hunnemanre.com

@2023 Hunneman. All rights reserved. All information has been obtained from sources believed reliable but no warranty or representation is verified for accuracy or completeness. Caution and independent investigation of property and information should be verified. Reliance on this information is at your own risk.