

CONTEMPORARY I-44 GARDEN OFFICE FOR LEASE



**2415 E SKELLY DR TULSA, OK 74105
TWENTY-SIX OAKS**

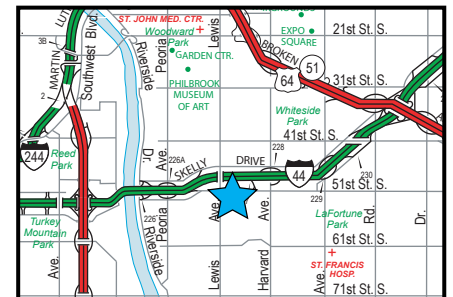


SIZES

- 1,438 SF Ground Level Office
(See Floorplan)

FEATURES

- Newly remodeled garden office space now available
- Premier 26 Oaks Office Complex
- Separate outside entrance with awning
- Beautifully designed contemporary finishes including:
 - Luxury Vinyl Plank Flooring
 - Smooth plastered 9' ceilings with canned lighting
 - French window doors/levered hardware
 - Full height windows with plantation shutters
 - Warm tone light grey wall paint
- Security System and IT services ready
- Convenient and direct I-44 and Lewis ingress/egress



The information contained herein is believed to be accurate but is not guaranteed as to accuracy and may change or be updated without notice.

Contact: Monty Berry, CCIM, Broker Associate

Office (918) 280-9900 | Cell (918) 695-4162 | Fax (918) 280-9902

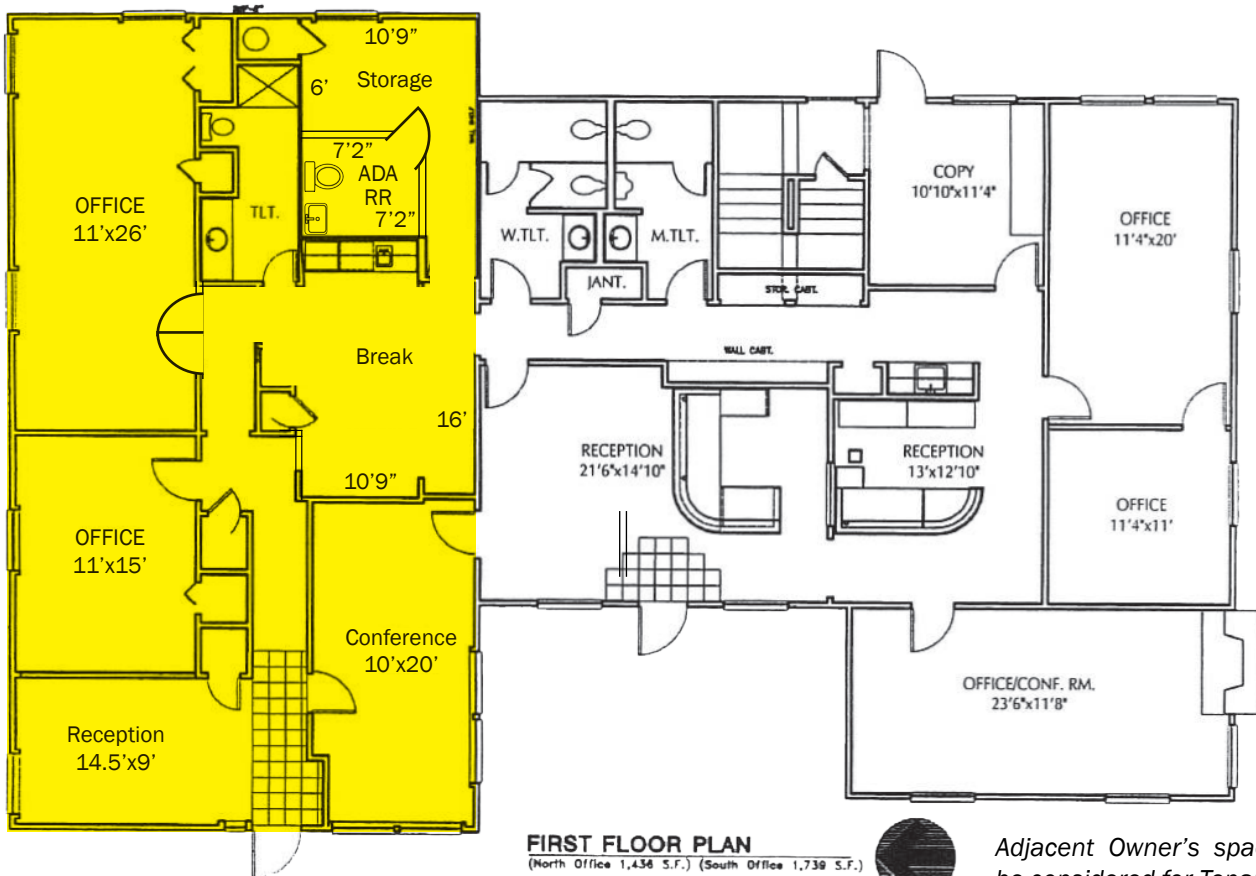
E-mail Monty@EquitasRealty.com



AERIAL



FLOORPLAN



FIRST FLOOR PLAN
 (North Office 1,434 S.F.) (South Office 1,739 S.F.)



Adjacent Owner's space could be considered for Tenant need.

PHOTOS



RECEPTION/LOBBY



CONFERENCE



EXECUTIVE OFFICE



BREAK AREA