

FOR LEASE > RETAIL SPACE

825 W. Henderson Avenue

PORTERVILLE, CALIFORNIA



> Location: Southeast corner of Highway 65 and Henderson Avenue, Porterville, CA

> Available for Lease: ±5,727 SF and ±12,216 SF

> Demographics:	Population	Avg HH Income	Number of HH
1 Mile Radius:	16,432	\$49,812	5,393
3 Mile Radius:	61,435	\$46,762	18,866
5 Mile Radius:	74,051	\$46,550	22,474
10 Mile Radius:	105,431	\$46,140	31,055

> Co-Anchors:



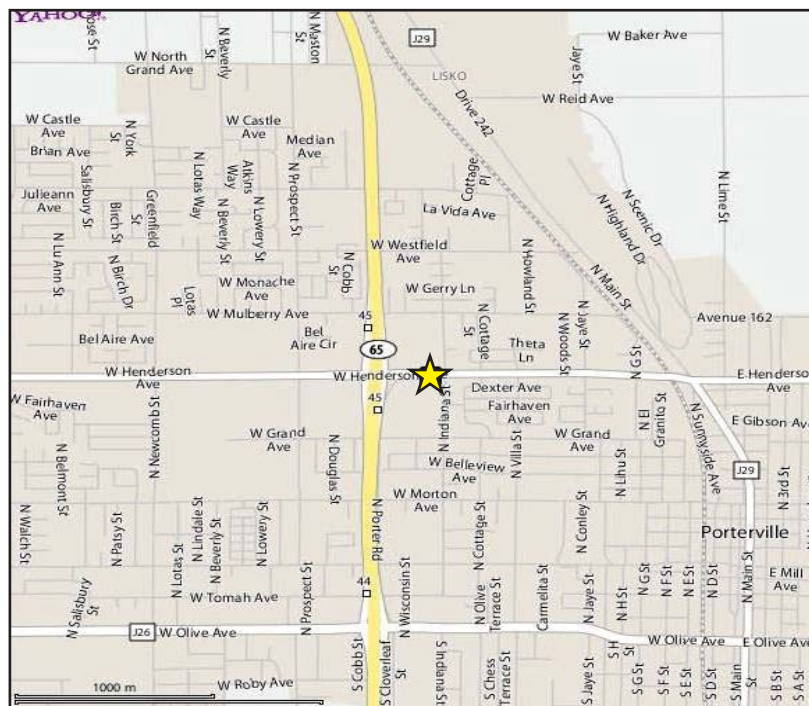
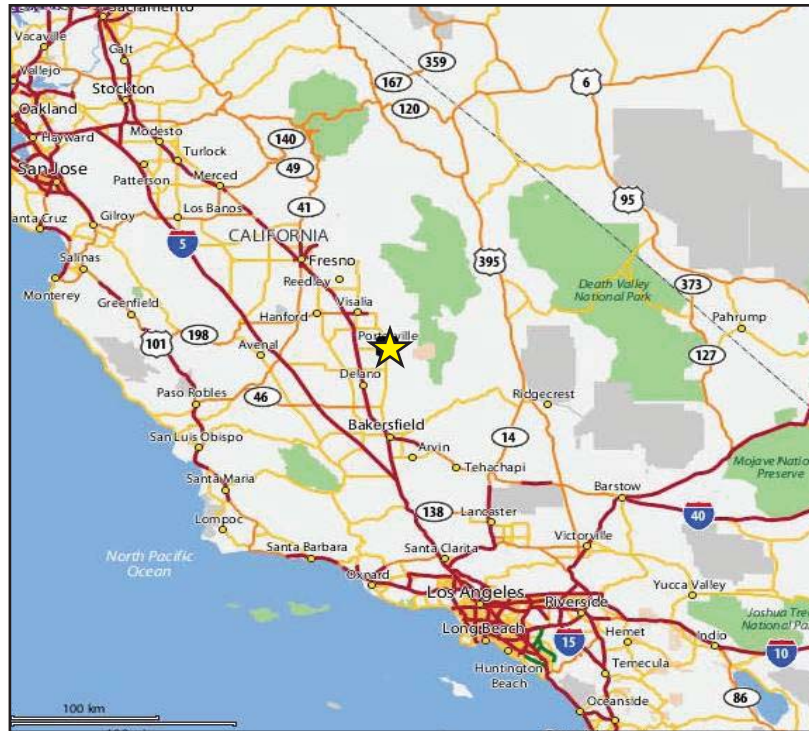
AGENT: MARK HENRY
559 221 1271 | EXT. 437
FRESNO, CA
mark.henry@colliers.com
DRE #00869280

COLLIERS INTERNATIONAL
7485 N. Palm Avenue, #110
Fresno, CA 93711
www.colliers.com

FOR LEASE > RETAIL SPACE

825 W. Henderson Ave.

PORTERVILLE, CALIFORNIA



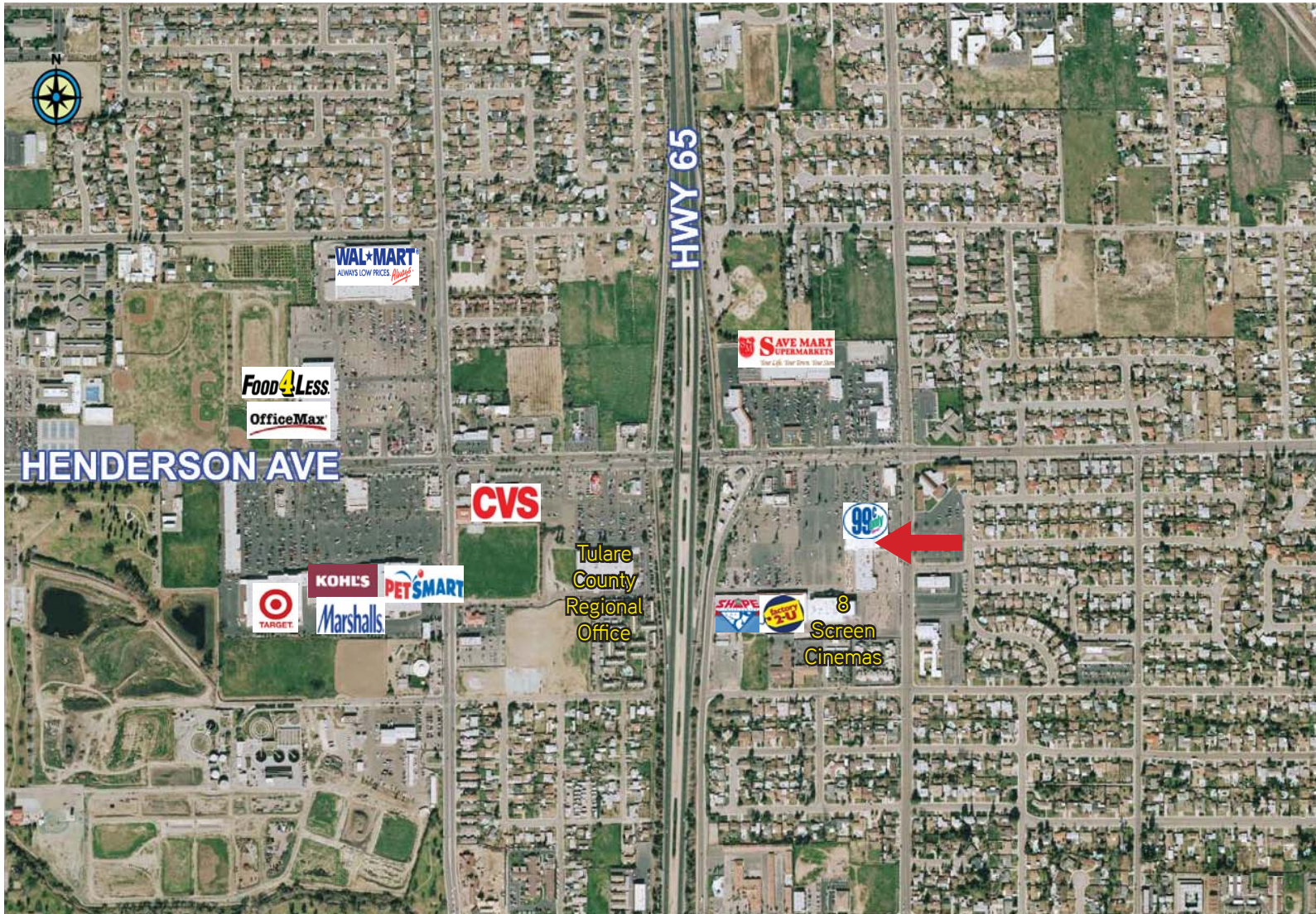
All information, representation and projections shown herein are based on information supplied by sources deemed to be reliable; however, they are not warranted by Colliers International and are subject to change without notice.

COLLIERS INTERNATIONAL
7485 N. Palm Avenue, #110
Fresno, CA 93711
www.colliers.com

FOR LEASE > RETAIL SPACE

825 W. Henderson Ave.

PORTERVILLE, CALIFORNIA



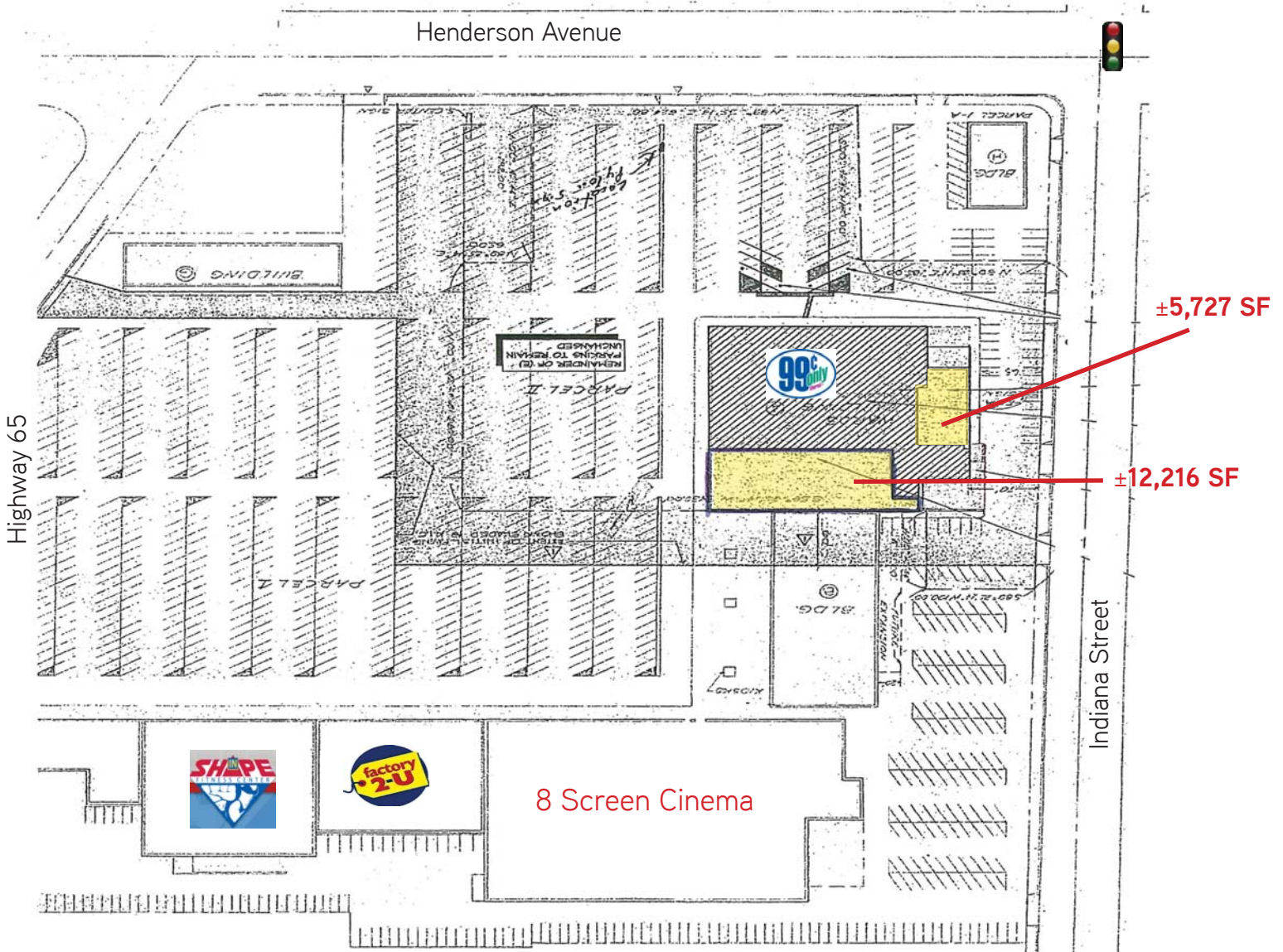
All information, representation and projections shown herein are based on information supplied by sources deemed to be reliable; however, they are not warranted by Colliers International and are subject to change without notice.

COLLIERS INTERNATIONAL
7485 N. Palm Avenue, #110
Fresno, CA 93711
www.colliers.com

FOR LEASE > RETAIL SPACE

825 W. Henderson Ave.

PORTERVILLE, CALIFORNIA



All information, representation and projections shown herein are based on information supplied by sources deemed to be reliable; however, they are not warranted by Colliers International and are subject to change without notice.

COLLIERS INTERNATIONAL
7485 N. Palm Avenue, #110
Fresno, CA 93711
www.colliers.com

FOR LEASE > RETAIL SPACE

825 W. Henderson Ave.

PORTERVILLE, CALIFORNIA



AGENT: MARK HENRY
559 221 1271 | EXT. 437
FRESNO, CA
mark.henry@colliers.com
DRE #00869280

