

OFFICE  
LEASE



# Downtown Everett Office Space

1721 Hewitt Ave | Everett, WA

**Jeff Ayers**

**Owner | Designated Broker**

206.600.9294

[jeff@ayerscommercialgroup.com](mailto:jeff@ayerscommercialgroup.com)

**Andrew Ayers**

**Broker**

206.300.0459

[andrew@ayerscommercialgroup.com](mailto:andrew@ayerscommercialgroup.com)

**Matthew Fay**

**Broker**

952.769.6534

[matthew@ayerscommercialgroup.com](mailto:matthew@ayerscommercialgroup.com)

**AYERS**  
COMMERCIAL  
GROUP

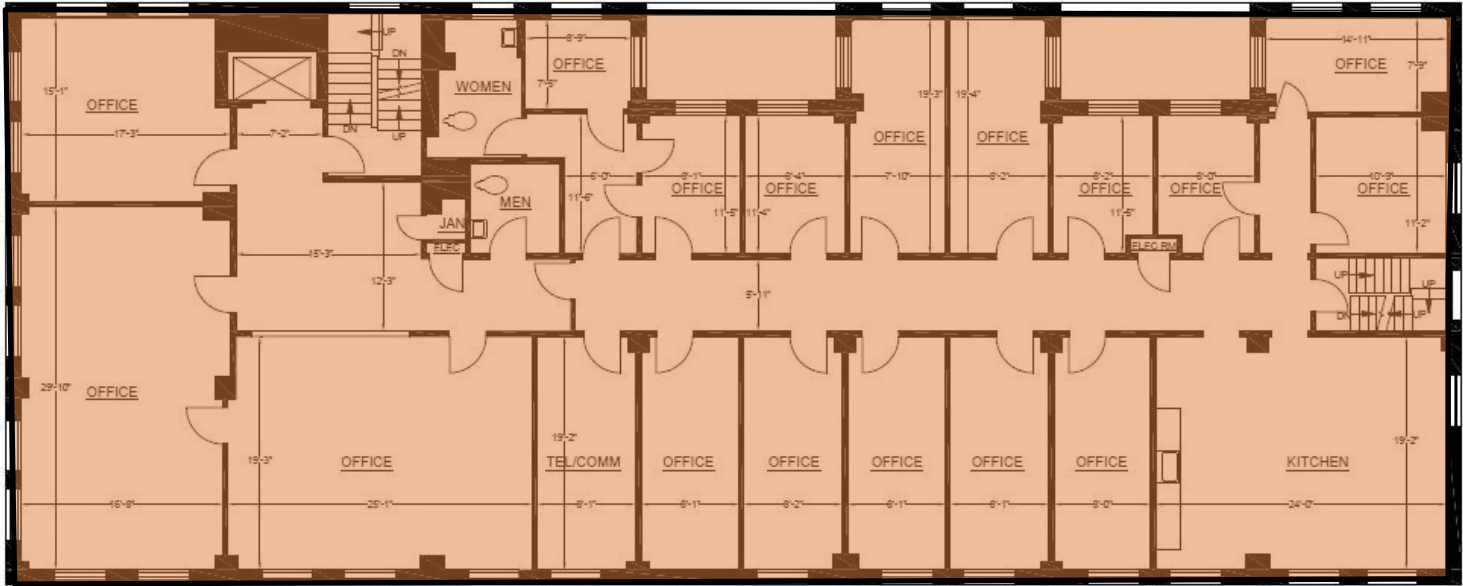
# PROPERTY FEATURES

<b>YEAR BUILT</b>	1924
<b>LEASE TYPE</b>	Full Service
<b>WATER/SEWER/GARBAGE</b>	Included in Rent
<b>ELECTRICITY</b>	Included in Rent
<b>PARKING</b>	Nearby Paid Garages/Lots Timed Street Parking Minimal Paid On-Site Parking
<b>JANITORIAL</b>	3X Per Week
<b>ELEVATOR</b>	Yes



# AVAILABLE SPACES—FLOOR 2

Suite	Square Feet	Base Rent	Notes
Whole 2nd Floor	5,760	\$9,520	Downtown Everett office space. Whole 2nd floor consisting of 15-16 Private offices, 2 conference rooms, kitchen/break room, private restrooms



# AVAILABLE SPACES—FLOOR 5

Suite	Square Feet	Base Rent	Notes
507-510	836	\$1,672	Large working space with additional private office.
515	380	\$760	3 private offices with reception area.



# AVAILABLE SPACES—FLOOR 6

Suite	Square Feet	Base Rent	Notes
601	857	\$1,714	Rare downtown Everett office with Air Conditioning. Layout consists of 3 private offices, open area, server room

