

AVAILABLE FOR LEASE

5455 E La Palma Ave, C-1  
Anaheim, CA 92807

AVAILABLE: ± 2200 SF



±2,200 SF office space located in a well-established industrial area with convenient access to major transportation routes. Features include 5 private offices and 2 restrooms, ideal for a variety of office or administrative uses. Competitively priced with flexible terms and negotiable rate.

## PROPERTY HIGHLIGHTS

- ±2,200 SF office space
- 5 private offices
- 2 restrooms
- Functional, efficient layout
- Convenient access to major transportation routes
- Ideal for office or administrative use
- Flexible terms, negotiable pricing

## CONTACT

Michael Shi, Managing Partner  
909.319.4661  
michael@tmgroupcre.com  
License #02161454

Tracy Lee, MBA, Broker Associate  
626.620.5100  
tracytmgroup@gmail.com  
License #02042338



UNIVERSAL ELITE  
COMMERCIAL

Universal Elite  
18645 Gake Ave Ste 233, City of Industry, CA 91748  
7700 Irvine Center Dr 680, Irvine, CA 92618  
License #02121545

All information is deemed reliable but not guaranteed.

Buyer to verify all information independently. Broker and owner make no warranties or representations as to the accuracy of the information provided.

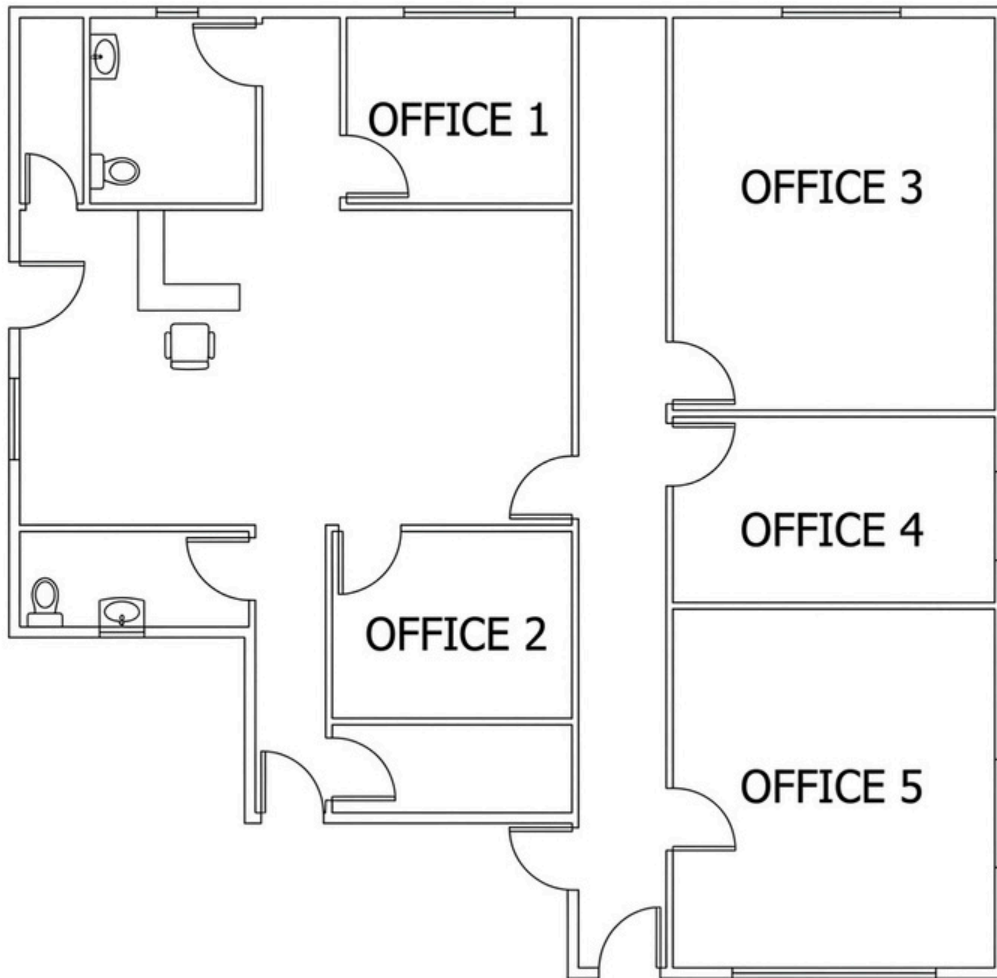
5455 E La Palma Ave, C-1 Anaheim,  
CA 92807

# FLOOR PLAN

Available: 2200 SF



UNIVERSAL ELITE  
COMMERCIAL





All information is deemed reliable but not guaranteed.  
Buyer to verify all information independently. Broker and owner make no warranties or representations as to the accuracy of the information provided.



5455 E LA PALMA AVE,  
C-1  
ANAHEIM, CA 92807

## CONTACT

Michael Shi, Managing Partner  
909.319.4661  
michael@tmgroupcre.com  
License #02161454

Tracy Lee, MBA, Broker Associate  
626.620.5100  
tracytmgroup@gmail.com  
License #02042338



UNIVERSAL ELITE  
COMMERCIAL

Universal Elite  
18645 Gake Ave Ste 233, City of Industry, CA 91748  
7700 Irvine Center Dr 680, Irvine, CA 92618  
License #02121545