

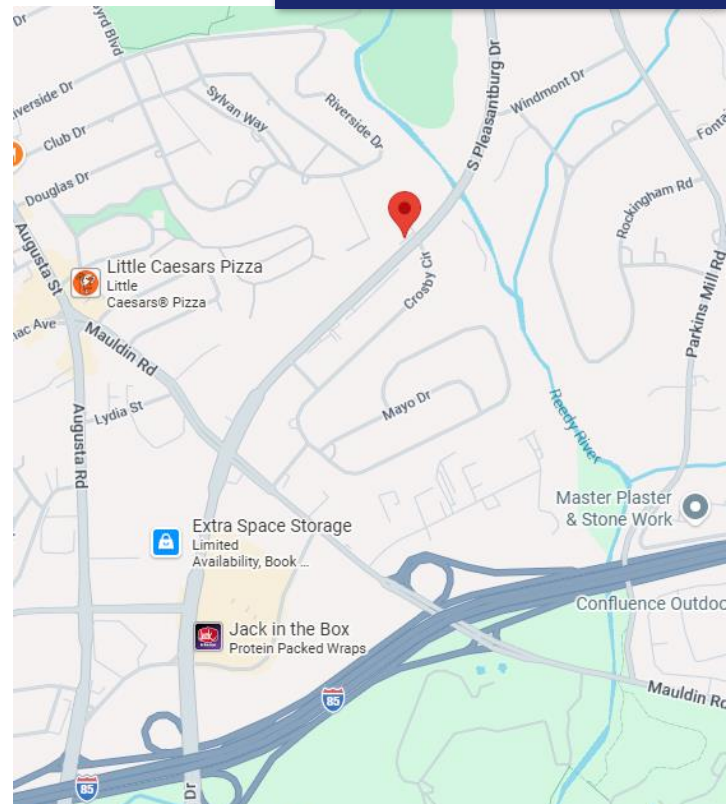


Great Location On High Traffic Hwy 291

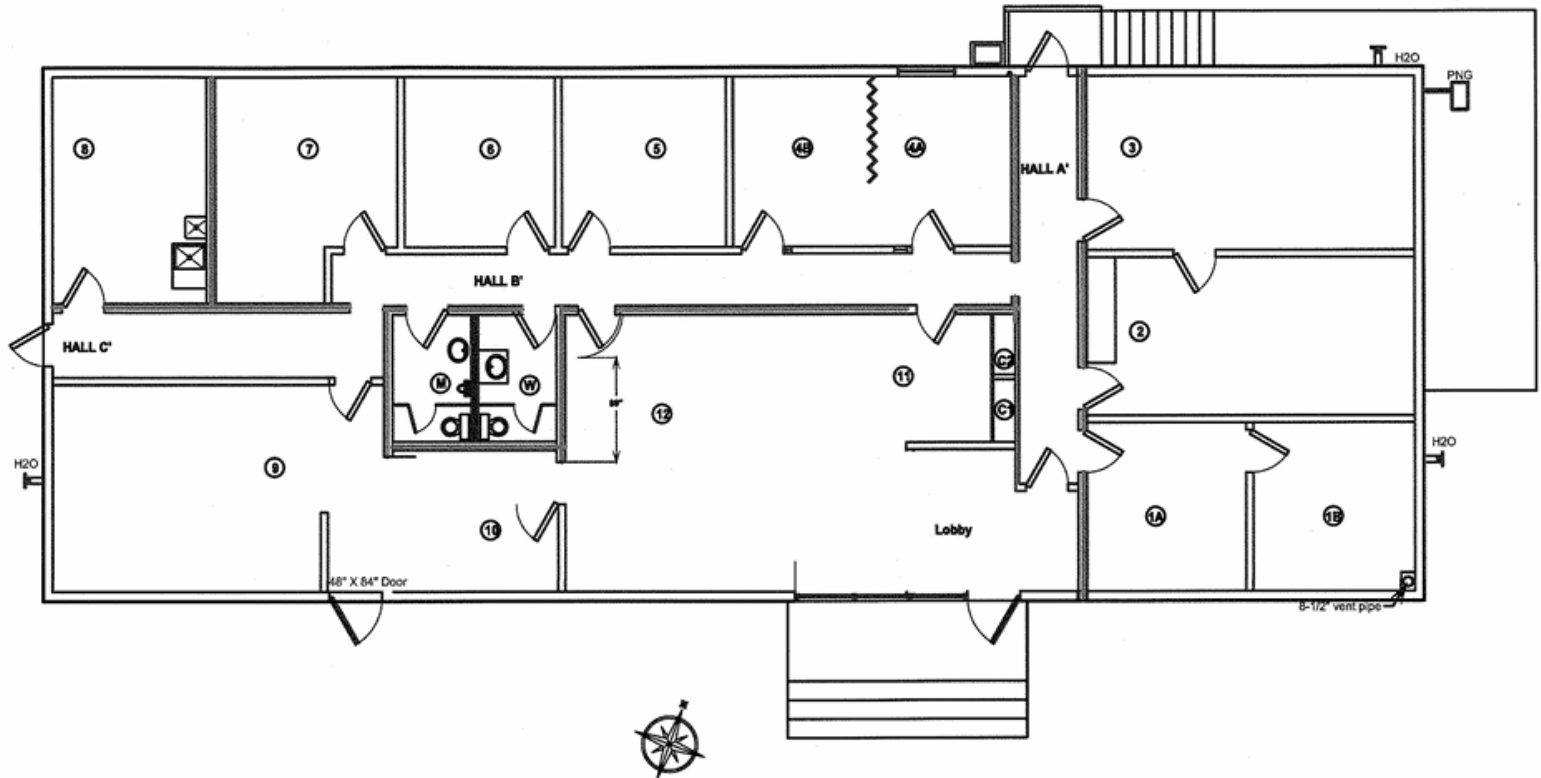
FOR SALE:
\$650,000.00

1200 S Pleasantburg Drive

- +/-3,700 sf office building on +/-0.33 acres
- Current tenant relocating – April 2026
- 12 offices, large open work space off lobby
- 2 restrooms
- Partial basement for mechanical room/storage
- 14 lined parking spaces (with room for more)
- Greenville County Tax Map #M015030300100
- Zoned MX-2, City of Greenville



Current Office Layout



Interior Pictures

