

164 LINCOLN HIGHWAY

Fairless Hills, PA 19030

 FOR LEASE

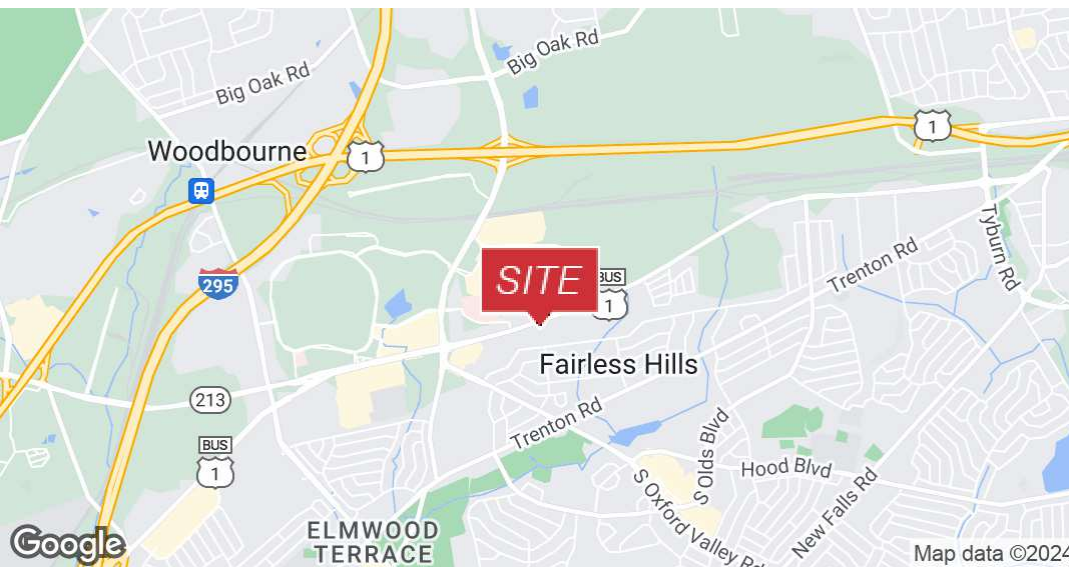
 2 OFFICE SUITES

 1,270 SF & 1,560 SF



PROPERTY DESCRIPTION

- Suite 102: 1,560 SF
- Suite 203: 1,270 SF
- Pylon signage
- Two-story, elevator served, multi-tenanted office building
- Close to shopping, restaurants, banks, hotels, the Oxford Valley Mall and Sesame Place via Business Route 1/Lincoln Highway
- Located on highly traveled Lincoln Highway
- Only 1/2 mile from Oxford Valley Mall and Aria Health-Bucks County
- 5 minutes from Interstate 95 and US Route 1



FOR MORE INFORMATION


Zena Charokopos

 215.396.2900 x103

 zena.charokopos@naimertz.com

NAI MERTZ DISCLAIMER: NO WARRANTY OR REPRESENTATION, EXPRESS OR IMPLIED, IS MADE AS TO THE ACCURACY OF THE INFORMATION CONTAINED HEREIN, AND THE SAME IS SUBMITTED SUBJECT TO ERRORS, OMISSIONS, CHANGE OF PRICE, RENTAL OR OTHER CONDITIONS, PRIOR SALE, LEASE OR FINANCING, OR WITHDRAWAL WITHOUT NOTICE, AND OF ANY SPECIAL LISTING CONDITIONS IMPOSED BY OUR PRINCIPALS. NO WARRANTIES OR REPRESENTATIONS ARE MADE AS TO THE CONDITION OF THE PROPERTY OR ANY HAZARDS CONTAINED THEREIN ARE ANY TO BE IMPLIED. OUTLINES ARE APPROXIMATE AND SHOWN ONLY TO IDENTIFY THE PARCEL IN CONSIDERATION.

NAI Mertz

 **NAI Mertz** | 210 E. Street Road, Suite 3B
Feasterville-Trevese, PA 19053
215-396-2900 | naimertz.com



164 LINCOLN HIGHWAY

164 Lincoln Highway Fairless Hills, PA 19030

 FOR LEASE

 SUITE 102

 1,560 SF

OCCUPIED
PA AUTO CREDIT



1ST
FLOOR

FOR MORE INFORMATION


Zena Charokopos

 215.396.2900 x103

 zena.charokopos@naimertz.com

NAI MERTZ DISCLAIMER: NO WARRANTY OR REPRESENTATION, EXPRESS OR IMPLIED, IS MADE AS TO THE ACCURACY OF THE INFORMATION CONTAINED HEREIN, AND THE SAME IS SUBMITTED SUBJECT TO ERRORS, OMISSIONS, CHANGE OF PRICE, RENTAL OR OTHER CONDITIONS, PRIOR SALE, LEASE OR FINANCING, OR WITHDRAWAL WITHOUT NOTICE, AND OF ANY SPECIAL LISTING CONDITIONS IMPOSED BY OUR PRINCIPALS NO WARRANTIES OR REPRESENTATIONS ARE MADE AS TO THE CONDITION OF THE PROPERTY OR ANY HAZARDS CONTAINED THEREIN ARE ANY TO BE IMPLIED. OUTLINES ARE APPROXIMATE AND SHOWN ONLY TO IDENTIFY THE PARCEL IN CONSIDERATION.

NAI Mertz

 **NAI Mertz** | 210 E. Street Road, Suite 3B
Feasterville-Trevese, PA 19053
215-396-2900 | naimertz.com



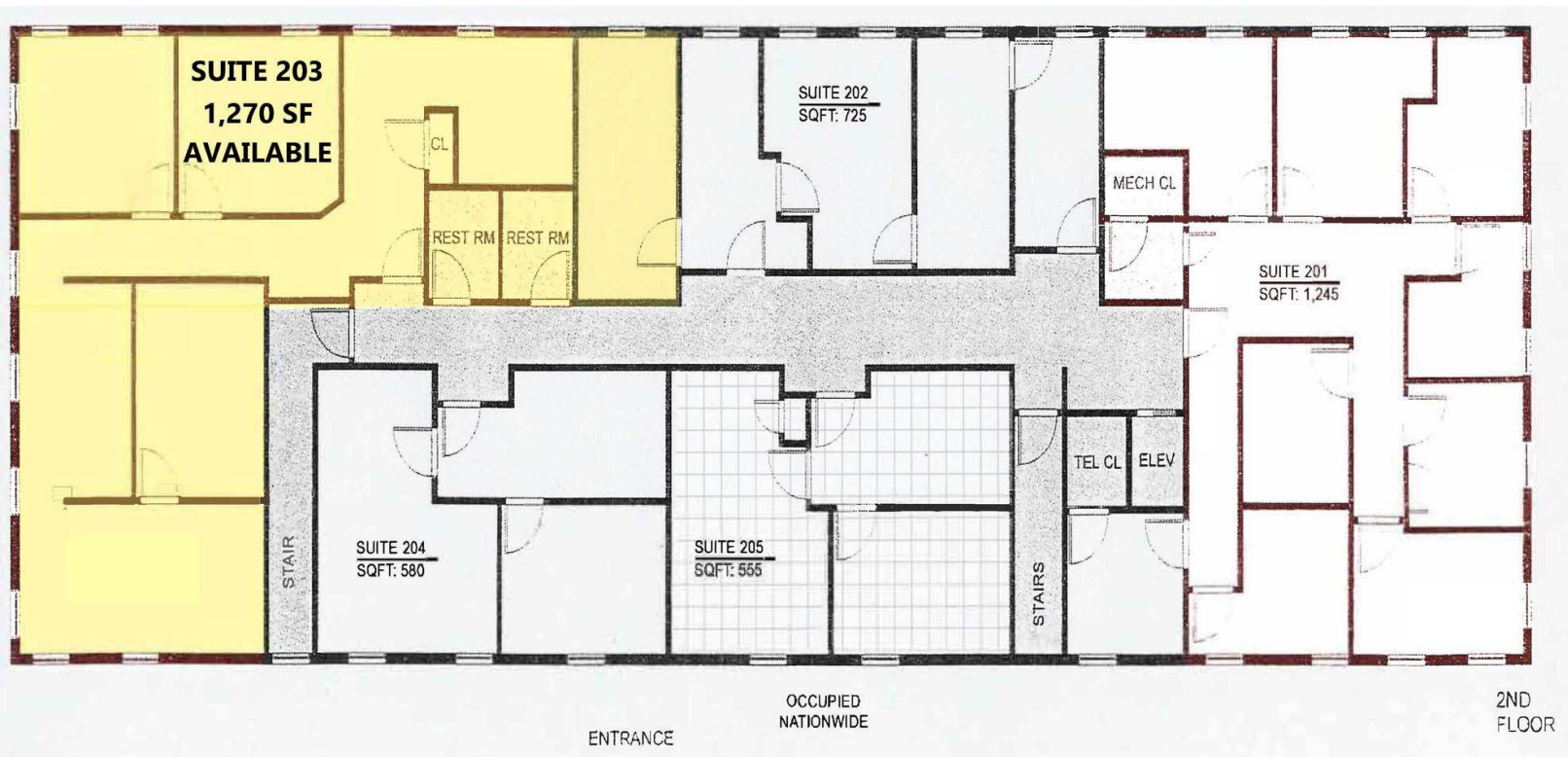
164 LINCOLN HIGHWAY

Fairless Hills, PA 19030

 FOR LEASE

 SUITE 203

 1,270 SF



FOR MORE INFORMATION


Zena Charokopos

 215.396.2900 x103

 zena.charokopos@naimertz.com

NAI MERTZ DISCLAIMER: NO WARRANTY OR REPRESENTATION, EXPRESS OR IMPLIED, IS MADE AS TO THE ACCURACY OF THE INFORMATION CONTAINED HEREIN, AND THE SAME IS SUBMITTED SUBJECT TO ERRORS, OMISSIONS, CHANGE OF PRICE, RENTAL OR OTHER CONDITIONS, PRIOR SALE, LEASE OR FINANCING, OR WITHDRAWAL WITHOUT NOTICE, AND OF ANY SPECIAL LISTING CONDITIONS IMPOSED BY OUR PRINCIPALS NO WARRANTIES OR REPRESENTATIONS ARE MADE AS TO THE CONDITION OF THE PROPERTY OR ANY HAZARDS CONTAINED THEREIN ARE ANY TO BE IMPLIED. OUTLINES ARE APPROXIMATE AND SHOWN ONLY TO IDENTIFY THE PARCEL IN CONSIDERATION.

NAI Mertz

 NAI Mertz | 210 E. Street Road, Suite 3B
Feasterville-Trevese, PA 19053
215-396-2900 | naimertz.com

