



# **GOLD AND COMPANY, LLC**

**WWW.GOLDCOMMERCIAL.NET**

***Commercial Real Estate in the Baltimore Metropolitan Area***



**4120 E. Chase St. Baltimore, MD 21205**

## **Gold And Company, LLC**

### ***For More Information:***

**Jim Chivers**  
**Sr. Vice President**  
**443.928.7522 cell**  
**jim@goldcommercial.net**

**Mitch Gold**  
**Broker**  
**410.456.2492**  
**mitch@goldcommercial.net**

**www.goldcommercial.net**

- **INDUSTRIAL LAND FOR SALE / LEASE**
- **14+ Acres**
- **I-2 Zoning—Heavy Industrial Zoning**
- **East Baltimore City Submarket**
- **Enterprise Zone Focus Area**
- **Qualified Opportunity Zone**
- **All Public Utilities**
- **+/- 5 Miles to the Baltimore Port**
- **Close to I-95**
- **Contact us For More Information**

This property offering is subject to change without notice. All information is deemed reliable but not guaranteed.



# ***Gold And Company***

***Commercial Real Estate in the Baltimore Metropolitan Area***

**4120 E. Chase St. Baltimore, MD 21205**

## **Additional Aerials**



**Jim Chivers / Mitch Gold  
Gold And Company, LLC  
5601 Newbury St.  
Baltimore, MD 21209**

**410.578.1300 (Office)**

**[www.goldcommercial.net](http://www.goldcommercial.net)**



# ***Gold And Company***

***Commercial Real Estate in the Baltimore Metropolitan Area***

**4120 E. Chase St. Baltimore, MD 21205**

## **Additional Aerials**



**Jim Chivers / Mitch Gold  
Gold And Company, LLC  
5601 Newbury St.  
Baltimore, MD 21209**

**410.578.1300 (Office)**

**[www.goldcommercial.net](http://www.goldcommercial.net)**

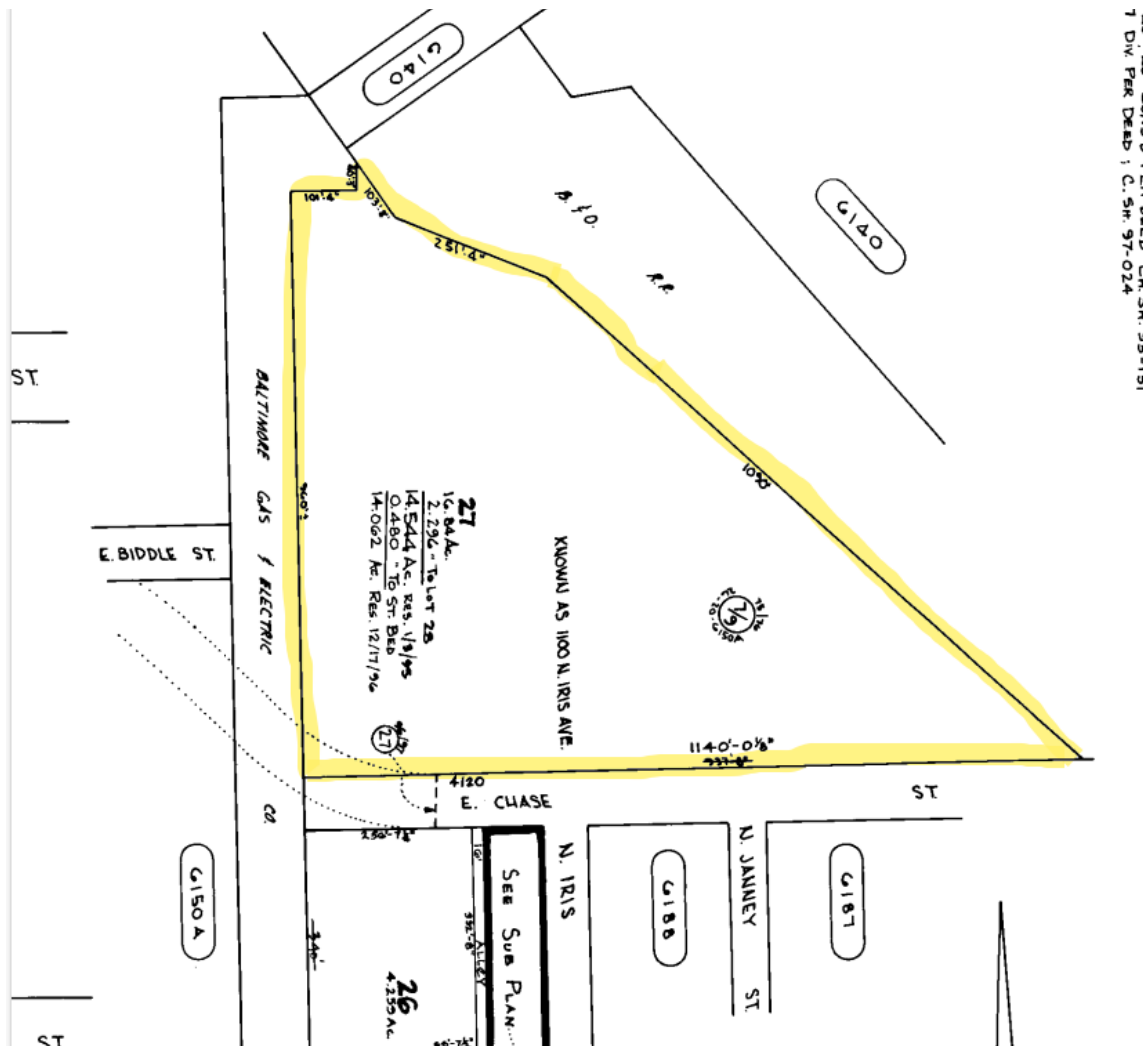


# Gold And Company

Commercial Real Estate in the Baltimore Metropolitan Area

**4120 E. Chase St. Baltimore, MD 21205**

## Block Map



1 DIV. PER DEED 1 C. 5H. 97-024

**Jim Chivers / Mitch Gold**  
**Gold And Company, LLC**  
**5601 Newbury St.**  
**Baltimore, MD 21209**

**410.578.1300 (Office)**  
**www.goldcommercial.net**

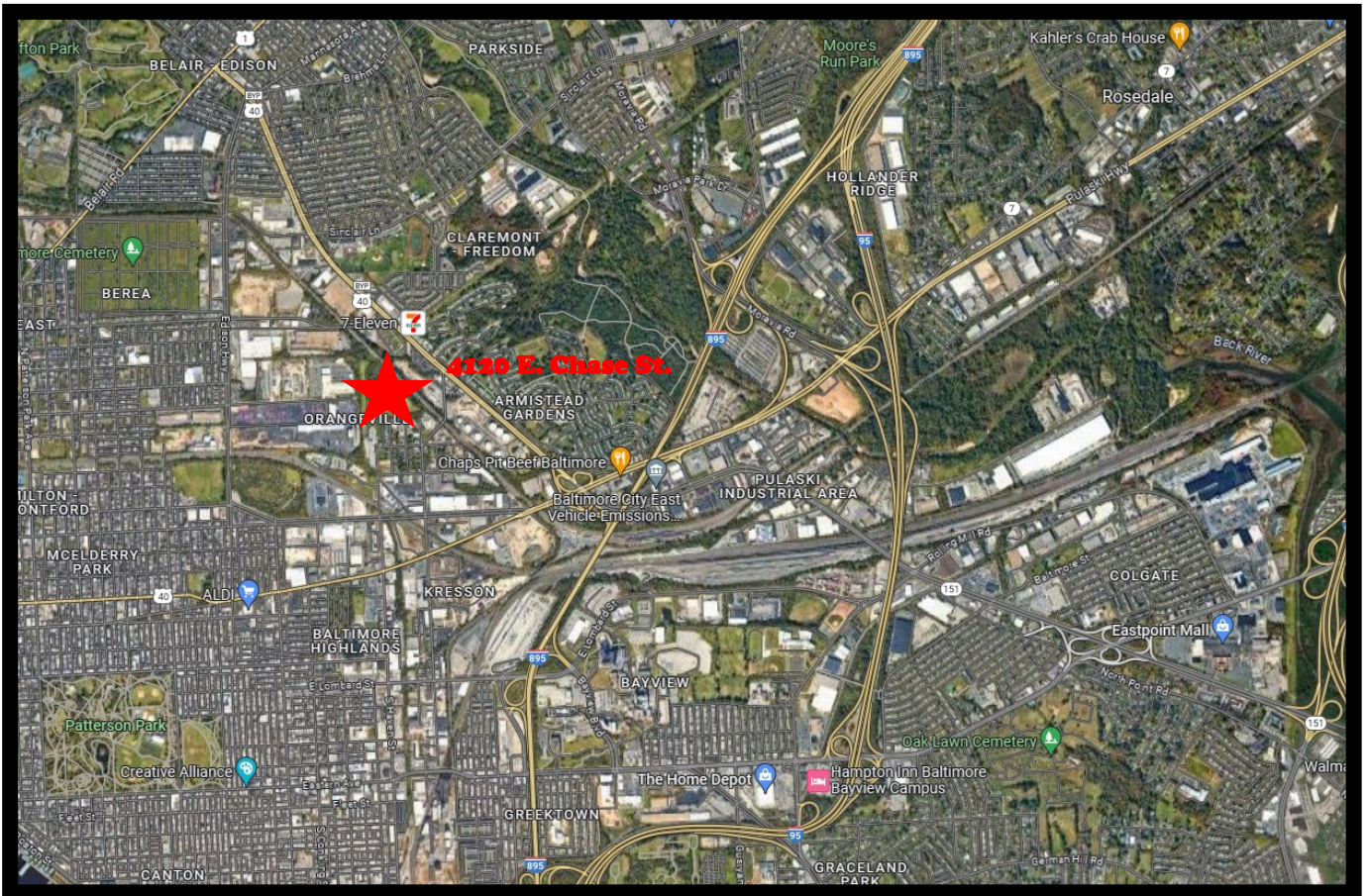


# **Gold And Company**

**Commercial Real Estate in the Baltimore Metropolitan Area**

**4120 E. Chase St. Baltimore, MD 21205**

## **Map**



**Jim Chivers**  
**Gold And Company, LLC**  
**5601 Newbury St.**  
**Baltimore, MD 21209**

**410.578.1300 (Office)**

**[www.goldcommercial.net](http://www.goldcommercial.net)**