



DEVELOPMENT SITE FOR SALE

820 E OHIO ST
PITTSBURGH, PA 15212



Presented By:

Kevin Riley

412.745.5000 x200

kevin@totumrealtyadvisors.com

420 Fort Duquesne Blvd Pittsburgh, PA 15222 // 412.745.5000 // totumrealtyadvisors.com

820 E OHIO ST

PITTSBURGH, PA 15212



EXECUTIVE SUMMARY



OFFERING SUMMARY

Sale Price:	Subject To Offer
Lot Size:	0.2 - 0.8 Acres
VPD Ohio Street:	15,000+
VPD I 279:	30,000+
Zoning:	Neighborhood Industrial

PROPERTY OVERVIEW

Located at the high-visibility intersection of East Ohio Street and Madison Avenue in Pittsburgh's historic Northside, this 0.2 to 0.8 acre parcel offers exceptional potential for a variety of commercial or mixed-use developments. With walking distance to Downtown this property is strategically positioned for businesses looking to capitalize on the city's ongoing growth. The site is surrounded by a dynamic mix of retail, residential, and commercial properties, ensuring a steady flow of foot traffic and excellent exposure. The flexible lot size and prominent location make it ideal for retail, office, or multifamily projects. Don't miss the chance to be a part of the continued revitalization of one of Pittsburgh's most iconic neighborhoods.

PROPERTY HIGHLIGHTS

- High visibility and easy access to I-279 & Route 28
- Flexible lot size
- All utilities at site

Presented By:

Kevin Riley

412.745.5000 x200

kevin@totumrealtyadvisors.com

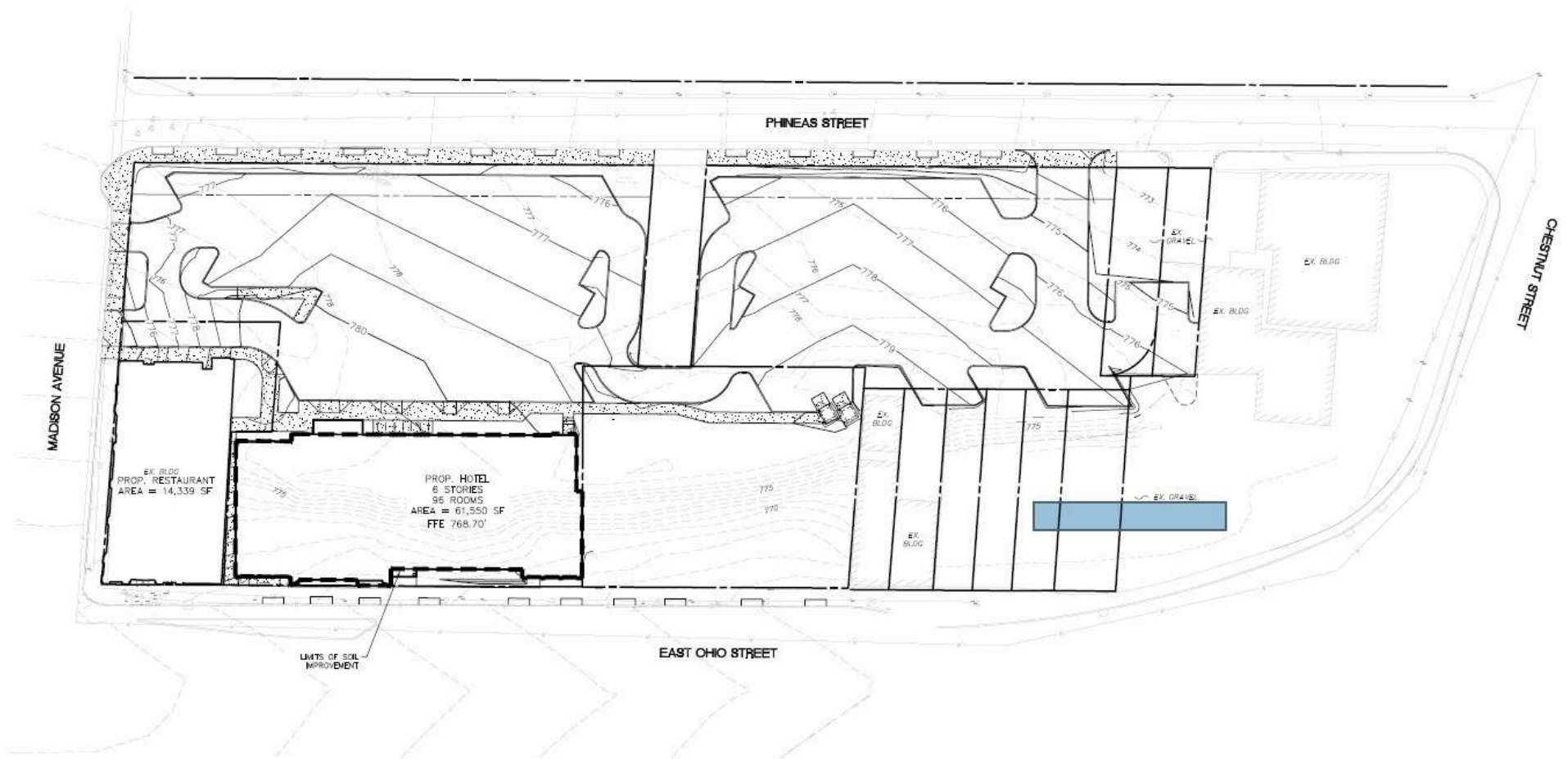
420 Fort Duquesne Blvd Pittsburgh, PA 15222 // 412.745.5000 // totumrealtyadvisors.com

820 E OHIO ST

PITTSBURGH, PA 15212



SITE PLANS



Presented By:

Kevin Riley

412.745.5000 x200

kevin@totumrealtyadvisors.com

420 Fort Duquesne Blvd Pittsburgh, PA 15222 // 412.745.5000 // totumrealtyadvisors.com

820 E OHIO ST

PITTSBURGH, PA 15212



ADDITIONAL PHOTOS



Presented By:

Kevin Riley

412.745.5000 x200

kevin@totumrealtyadvisors.com

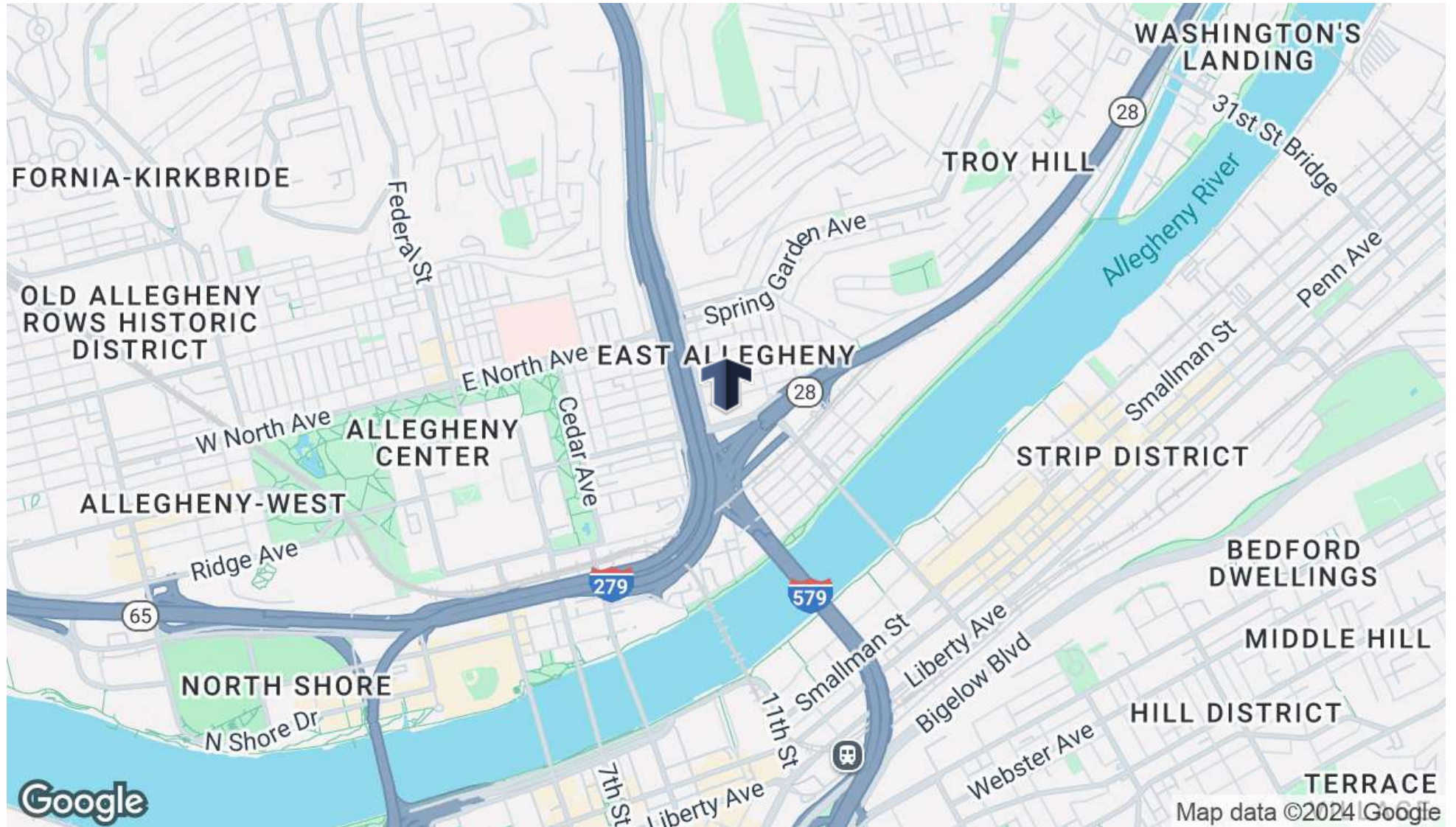
420 Fort Duquesne Blvd Pittsburgh, PA 15222 // 412.745.5000 // totumrealtyadvisors.com

820 E OHIO ST

PITTSBURGH, PA 15212



LOCATION MAP



Presented By:

Kevin Riley

412.745.5000 x200

kevin@totumrealtyadvisors.com

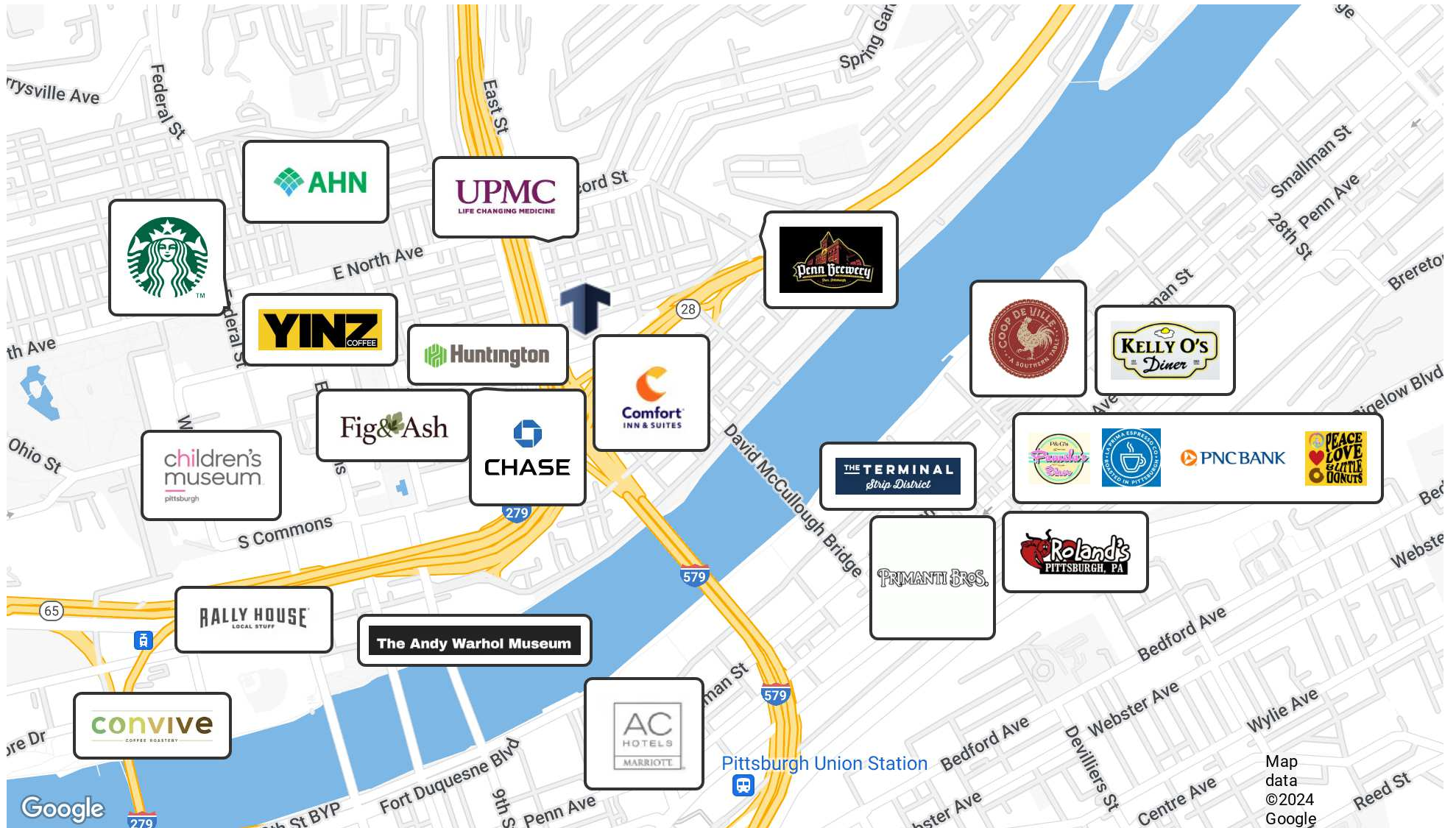
420 Fort Duquesne Blvd Pittsburgh, PA 15222 // 412.745.5000 // totumrealtyadvisors.com

820 E OHIO ST

PITTSBURGH, PA 15212



RETAILER MAP



Presented By:

Kevin Riley

412.745.5000 x200

kevin@totumrealtyadvisors.com

420 Fort Duquesne Blvd Pittsburgh, PA 15222 // 412.745.5000 // totumrealtyadvisors.com

Map
data
©2024
Google

820 E OHIO ST

PITTSBURGH, PA 15212

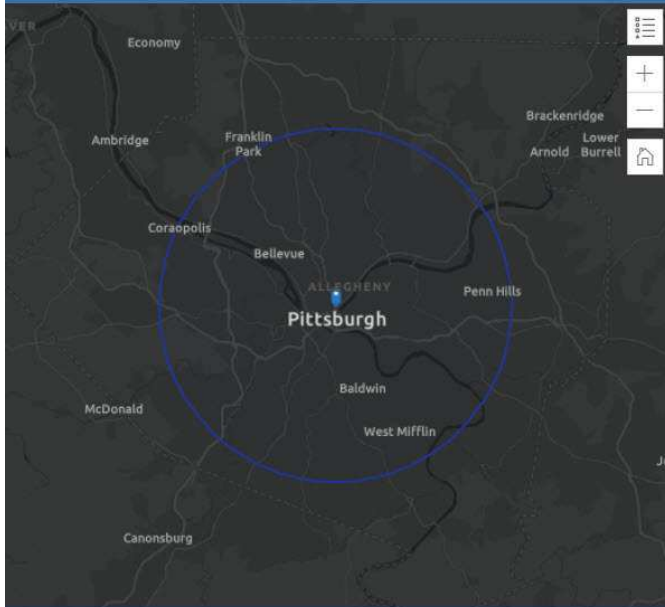


DEMOGRAPHICS MAP & REPORT

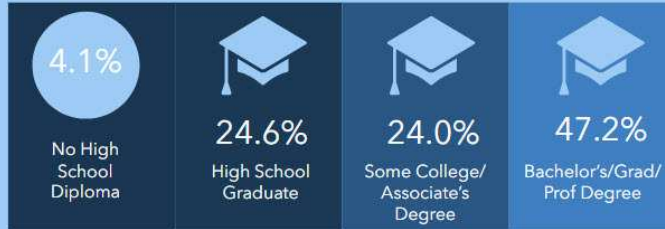
DEMOGRAPHIC PROFILE

820 E Ohio St, Pittsburgh, Pennsylvania, 15212

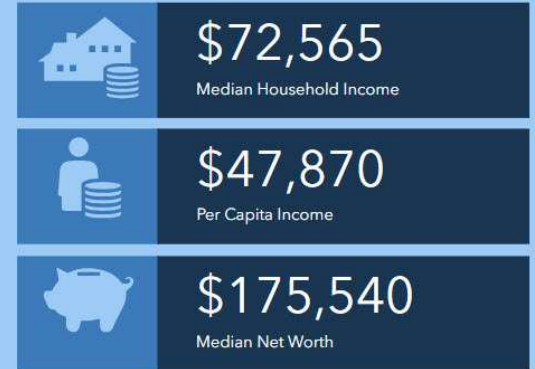
Ring of 10 miles



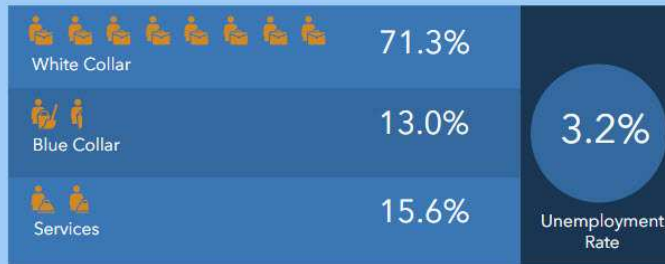
EDUCATION



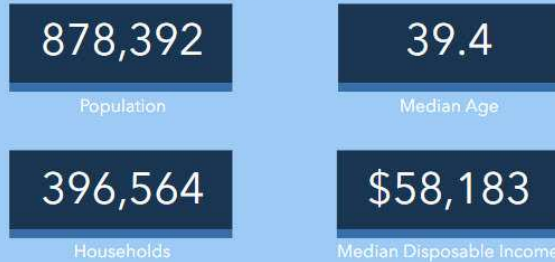
INCOME



EMPLOYMENT



KEY FACTS



Source: This infographic contains data provided by Esri (2024, 2029).
© 2024 Esri

Presented By:

Kevin Riley

412.745.5000 x200

kevin@totumrealtyadvisors.com

420 Fort Duquesne Blvd Pittsburgh, PA 15222 // 412.745.5000 // totumrealtyadvisors.com