

Land For Lease

Springdale, AR

1501 S 48th St
Springdale, AR 72762
www.cbre.com/fayetteville

Rate: Negotiable



Property Highlights

- + ±1.6 Acres Available
- + Owner will Build to Suit or Ground Lease
- + City Utilities at Site
- + I-49 Access from Hwy 412 & Don Tyson Pkwy
- + VPD: ±5,600
- + 6 Hotel Complexes Consisting of ±684 Rooms Within Walking Distance
- + Nearby:
 - Sam's Club
 - BNSF Logistics
 - Highland's Oncology
 - Home 2 Suites by Hilton
 - Waco Title Regional Office
 - Arkansas Children's Hospital

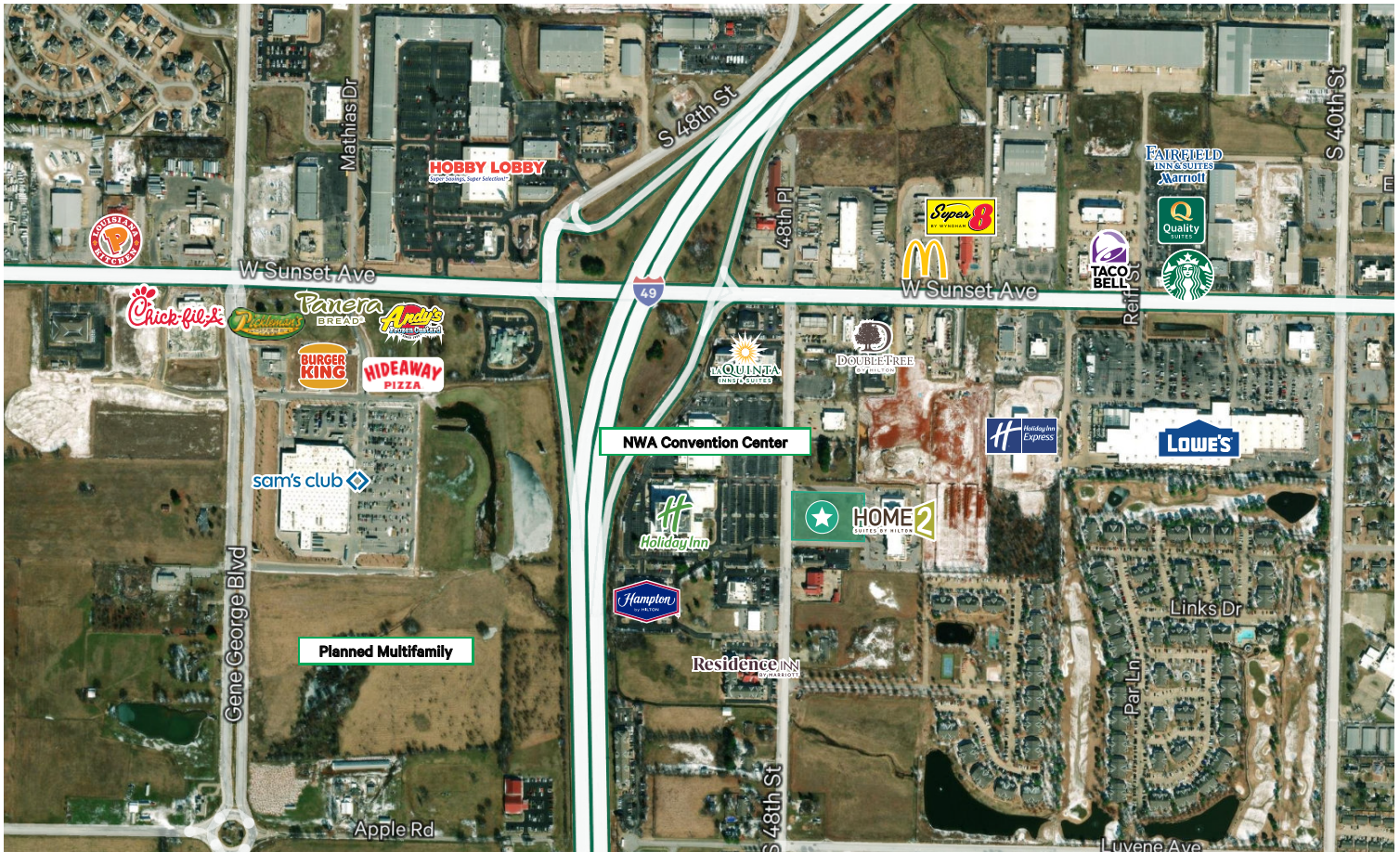
Commercial Land

1501 S 48th St | Springdale, AR 72762

For Lease



2022 Demographics	1 Mile	3 Miles	5 Miles
Population	5,665	46,421	109,965
Businesses	387	2,106	4,421
Employees	5,115	29,495	67,848
Largest Age Group	25-29	30-34	30-34
Households	2,187	15,983	38,048
Average Household Income	\$99,904	\$108,275	\$110,229



Contact Us

Hunter Groce

Senior Associate
+1 479 287 4241
hunter.groce@cbre.com

David Erstine, SIOR, CCIM

Senior Vice President
+1 479 249 6199
david.erstine@cbre.com

© 2023 CBRE, Inc. All rights reserved. This information has been obtained from sources believed reliable, but has not been verified for accuracy or completeness. You should conduct a careful, independent investigation of the property and verify all information. Any reliance on this information is solely at your own risk. CBRE and the CBRE logo are service marks of CBRE, Inc. All other marks displayed on this document are the property of their respective owners, and the use of such logos does not imply any affiliation with or endorsement of CBRE. Photos herein are the property of their respective owners. Use of these images without the express written consent of the owner is prohibited.

www.cbre.com/fayetteville

CBRE