

FOR LEASE

3027 ENGLISH ROWS AVENUE, NAPERVILLE, IL 60564



PROPERTY INFORMATION

- 3027 English Rows is located along Route 59 and has 35,000 Vehicles passing per day.
- The property was designed with authentic Victorian-inspired architecture.
- The building is located in a high household average income of 230k in a one mile radius.
- The property is located near three golf courses, three high schools, a middle school, and two large public parks. - With a large current tenant base at this location, there's lots of customer traffic with plenty of parking.

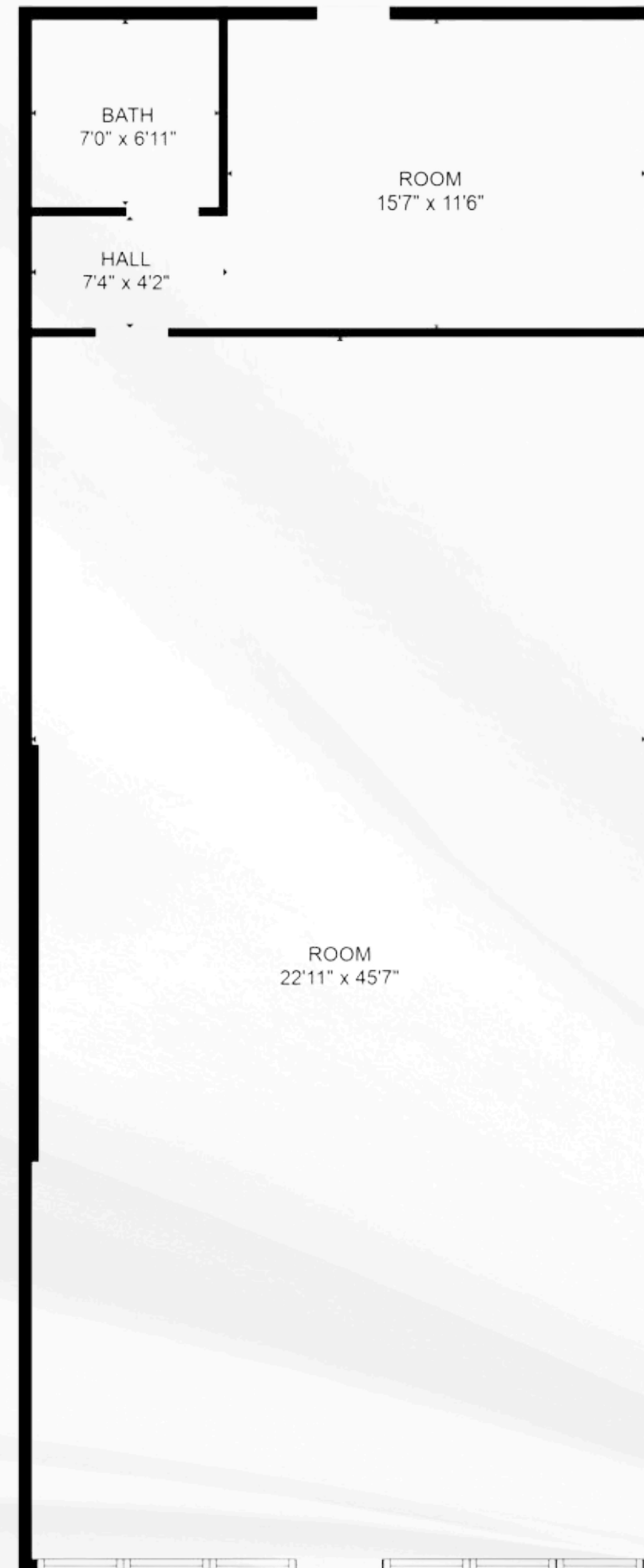


Kim Akkawi
872-463-4990

RETAIL SPACE

1ST FLOOR UNIT 111





FLOOR PLAN



1ST FLOOR UNIT 111



CHASE

Giordano's

POKE BROS.
ENJOY YOUR HAWAIIAN STYLE

KIDDIE ACADEMY
EDUCATIONAL CHILD CARE

CrossFit



Red Sun Spa

Little Gym

BEAUTY STUDIOS



Kind Lending