

Freestanding Retail

2472 Gulf to Bay Blvd.
Clearwater, FL 33765



Rendering of proposed facade change

Lisa McCaffrey

Executive Vice President
Retail Services
+1 813 871 8519
lisa.mccaffrey@colliers.com

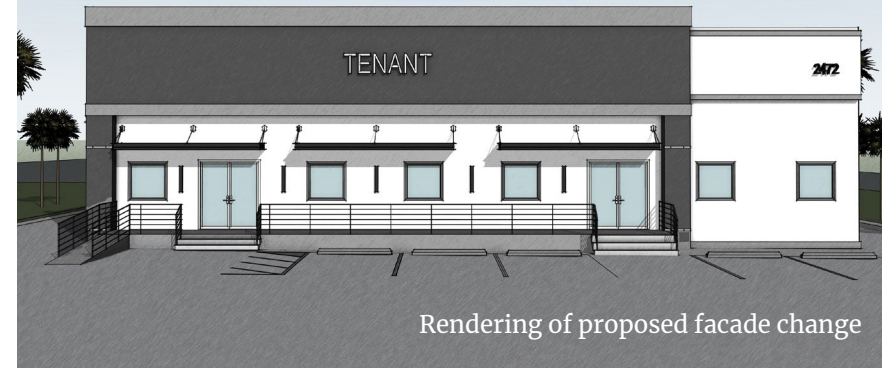
[View Online](#)
colliers.com



Freestanding Retail

Gulf to Bay Blvd.

- 6,500 SF freestanding building (can divide to 4,300± & 2,200± SF)
- High visibility on primary east-west corridor with 52,500 cars per day
- 40 parking spaces (front and rear)
- Pylon signage available
- Over 100,000 residents within 3-miles with an average household income of \$93,873. Daytime employment over 95,000 within the same radius



Rendering of proposed facade change



Existing front facade



Floor Plan



For Lease



Rear of Building

Area Demographics



Total Population

1-Mile: 15,943
3-Mile: 101,266
5-Mile: 249,798



Daytime Population

1-Mile: 17,518
3-Mile: 95,922
5-Mile: 258,219



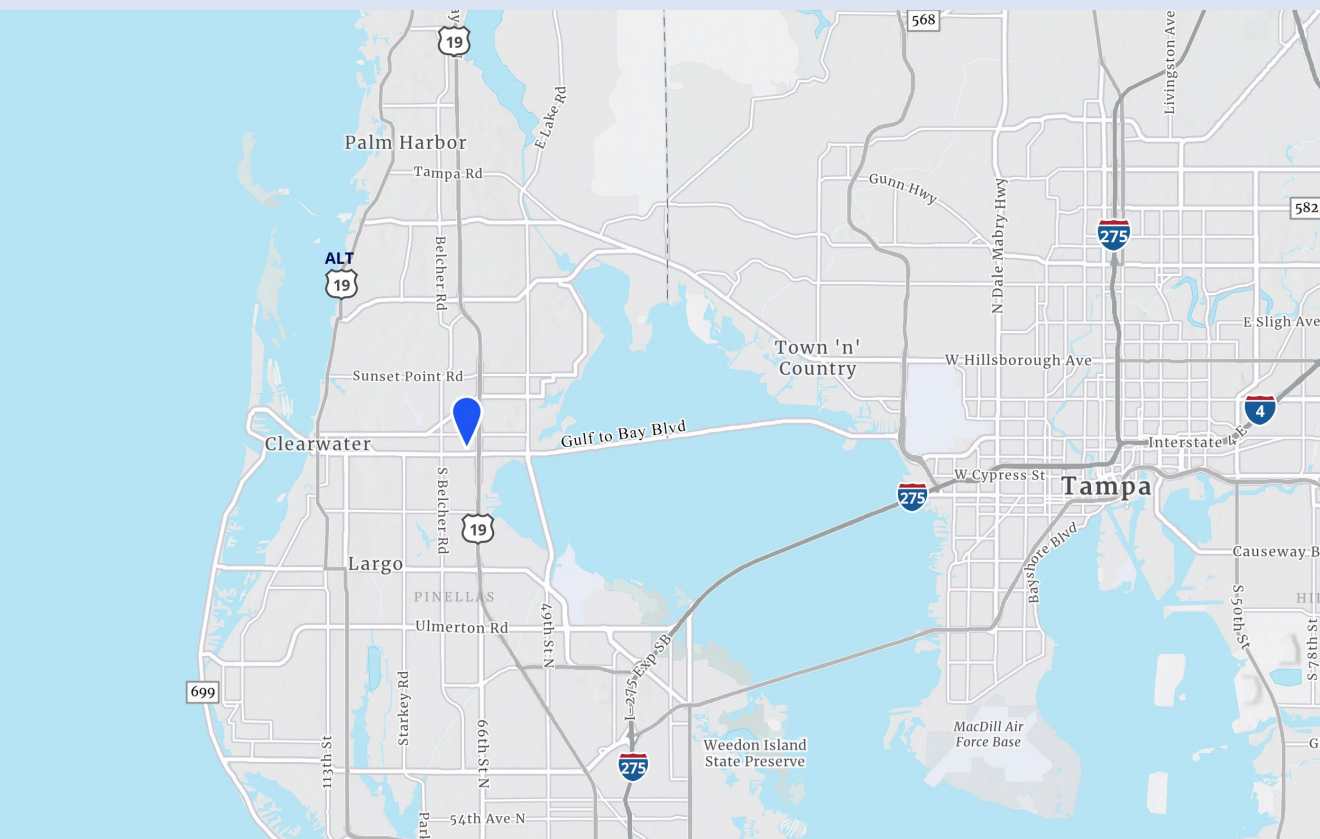
Average HH Income

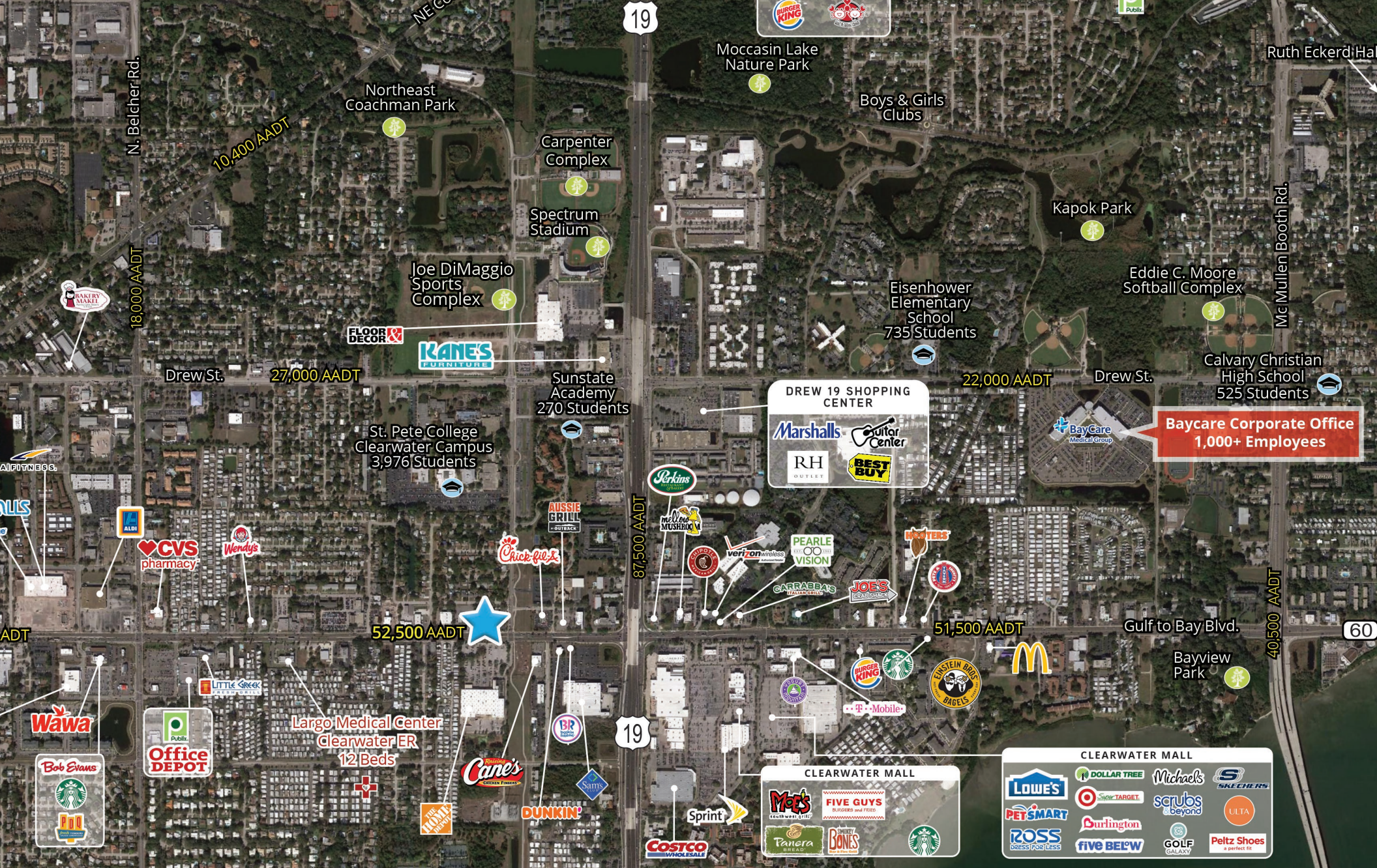
1-Mile: \$85,823
3-Mile: \$93,873
5-Mile: \$91,435



Median Age

1-Mile: 43.3
3-Mile: 47.6
5-Mile: 48.5





4830 W. Kennedy Blvd.
 Suite 300
 Tampa, FL 33609
 P: +1 813 221 2290

This document has been prepared by Colliers International for advertising and general information only. Colliers International makes no guarantees, representations or warranties of any kind, expressed or implied, regarding the information including, but not limited to, warranties of content, accuracy and reliability. Any interested party should undertake their own inquiries as to the accuracy of the information. Colliers International excludes unequivocally all inferred or implied terms, conditions and warranties arising out of this document and excludes all liability for loss and damages arising there from. This publication is the copyrighted property of Colliers International and/or its licensor(s). ©2024. All rights reserved.