



LAS VEGAS / NV 89118



5240
West Post Road

**±1.0 Acre of IP Zoned Paved,
Secured Yard**



LAUREN WILLMORE

Senior Associate
+1 702 369 4825
lauren.willmore@cbre.com
Lic. # S.0188698

CBRE



Property Overview

Rare opportunity to lease ± 1.0 Acre of fenced and paved yard space in the heart of the Southwest Submarket. This desirable property is located off W. Post Road and Decatur Boulevard in Las Vegas. This site is less than 10 minutes away from the Las Vegas Strip and is less than 5 minutes away from the 215 freeway.

- + Located near Post Road and Decatur Boulevard
- + Gate access via Sobb Avenue
- + Paved, striped, and gated asphalt pad
- + Yard features outdoor security pole lighting
- + M-D Zoning (Clark County)
- + A portion of APN : 163-36-701-048
- + Lease Type : GROSS
- + MONTHLY RATE : \$17,424 (Gross)
- + AVAILABILITY : January 1st, 2026

Don't miss the chance to secure this exceptional outdoor storage site in Las Vegas.

Contact us today to schedule a private tour and explore how this property can elevate your business operations!

Lauren Willmore
702 369-4825 (office)
lauren.willmore@cbre.com

Location

DISTANCES TO:

215 FREEWAY

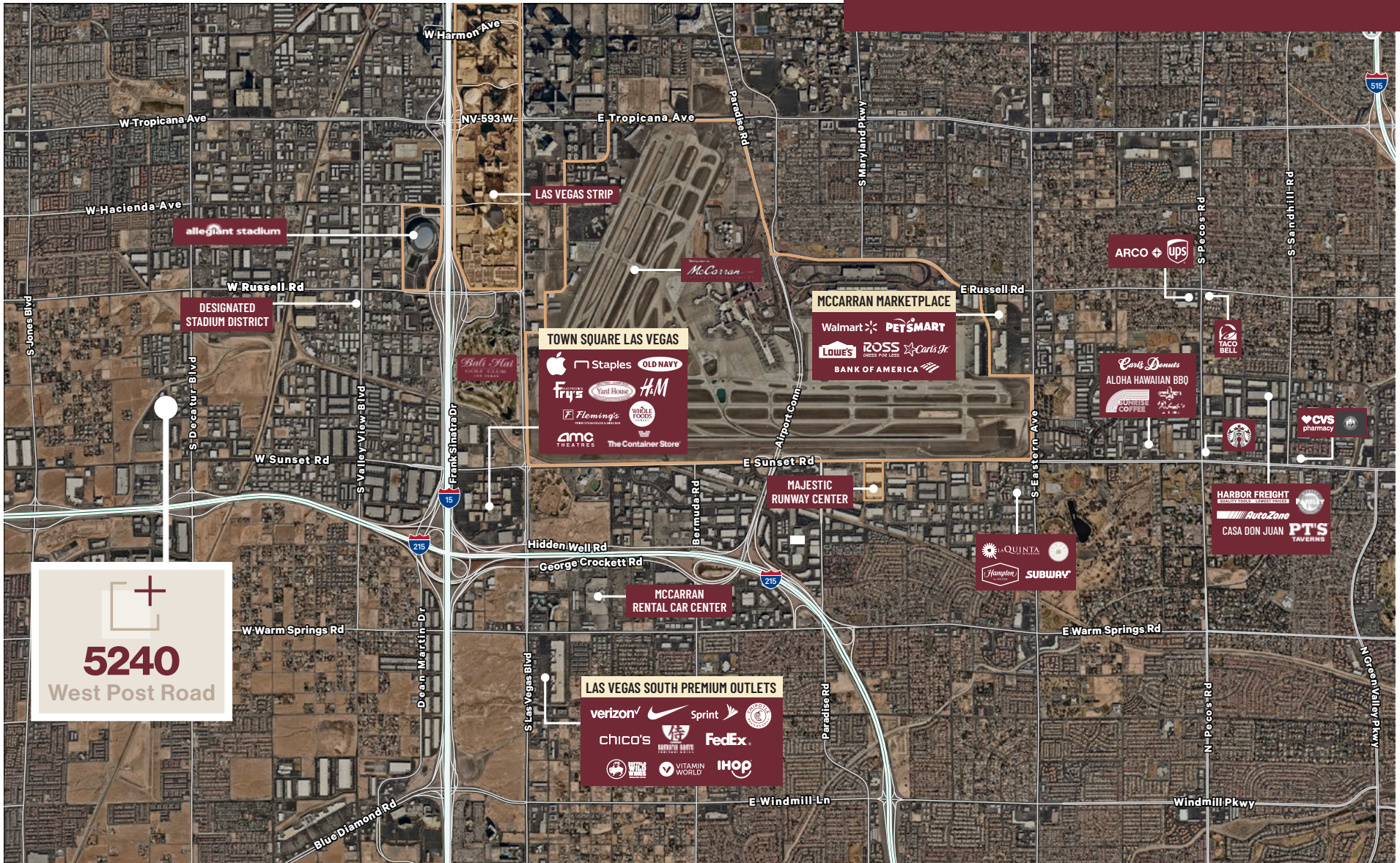
1 MILE

THE LAS VEGAS STRIP

5 MILES

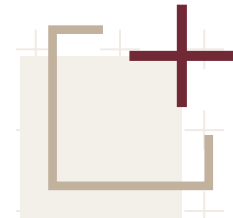
MCCARRAN INT'L AIRPORT

7 MILES





LAS VEGAS / NV 89118



5240
West Post Road

LAUREN WILLMORE

Senior Associate
+1702 369 4825
lauren.willmore@cbre.com
Lic. # S.0188698

MIKE WILLMORE

Senior Associate
+1702 369 4823
Mike.willmore@cbre.com
Lic. # S.0183520

KYLE KIRCHMEIER

Senior Associate
+1702 369 4862
kyle.kirchmeier@cbre.com
Lic. # S.0197013

DEAN WILLMORE, SIOR

Executive Vice President
+1702 369 4808
dean.willmore@cbre.com
Lic. # BS.0023886

CBRE

© 2025 CBRE, Inc. All rights reserved. This information has been obtained from sources believed reliable but has not been verified for accuracy or completeness. CBRE, Inc. makes no guarantee, representation or warranty and accepts no responsibility or liability as to the accuracy, completeness, or reliability of the information contained herein. You should conduct a careful, independent investigation of the property and verify all information. Any reliance on this information is solely at your own risk. CBRE and the CBRE logo are service marks of CBRE, Inc. All other marks displayed on this document are the property of their respective owners, and the use of such marks does not imply any affiliation with or endorsement of CBRE. Photos herein are the property of their respective owners. Use of these images without the express written consent of the owner is prohibited.