

Cypress Waters

FOR SUBLEASE

2999

OLYMPUS



6,425 SF AVAILABLE

Cypress Waters Office Park

2999 OLYMPUS BLVD | COPPELL, TX

**AVISON
YOUNG**



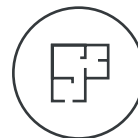
HIGHLIGHTS

Available space in amenity-rich Cypress Waters Office Park

- Amenities include a nine-hole putting green, complimentary lobby coffee bar, 6 miles of lakeside trails and a state-of-the-art fitness center
- Walkable to The Sound — a popular lakefront destination offering restaurants, retail, and year-round events
- 2999 Olympus showcases stunning views of North Lake and seamless access to the community's trail network
- 5-minute drive to DFW airport



Building size:
308,721 sf



Space details:
Suite 450 — 6,425 rsf
Expiration — Sep 2028



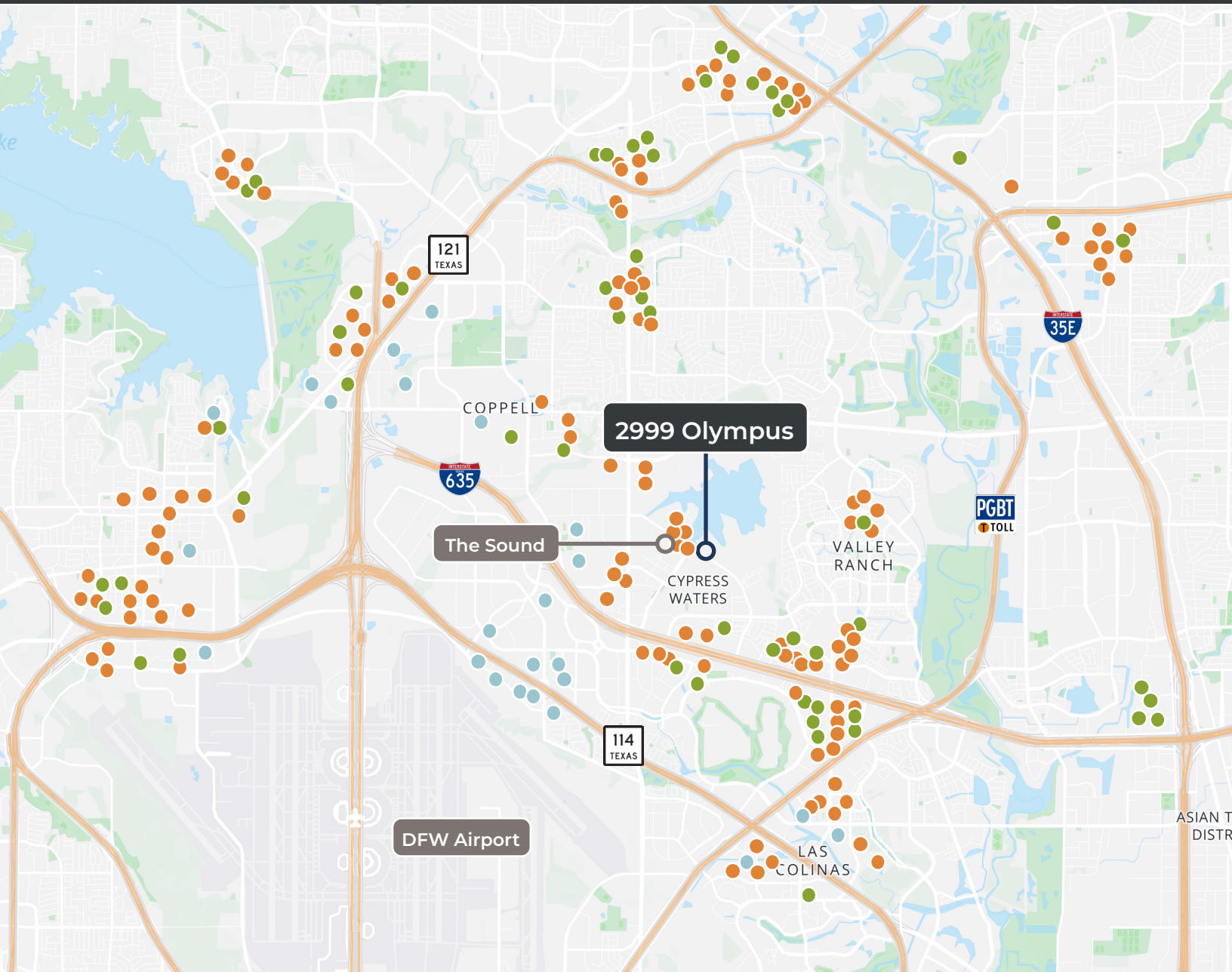
Quoted rental rate:
\$30.00 NNN
OPEX \$10.00 + E \$1.00
Furniture available



Year built:
2022



Parking:
5.50/1,000 sf



● RESTAURANT ● RETAIL ● HOTEL

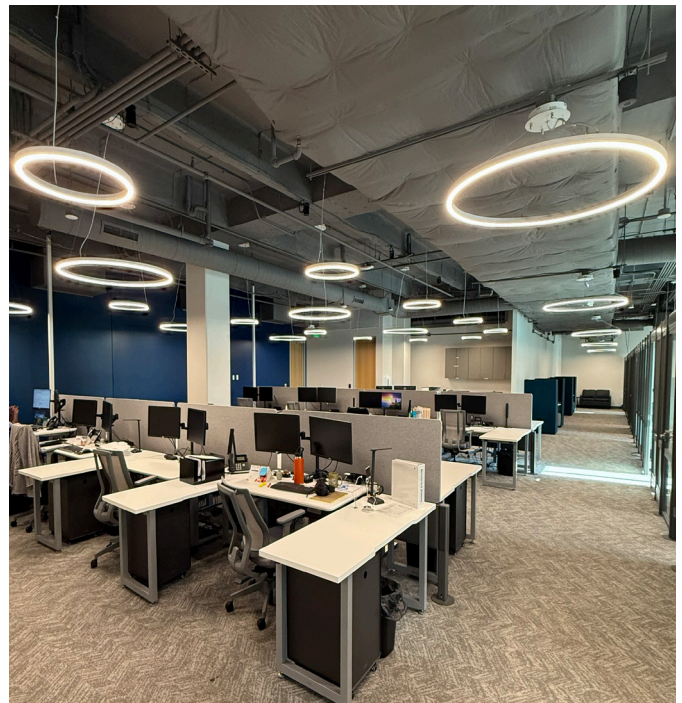
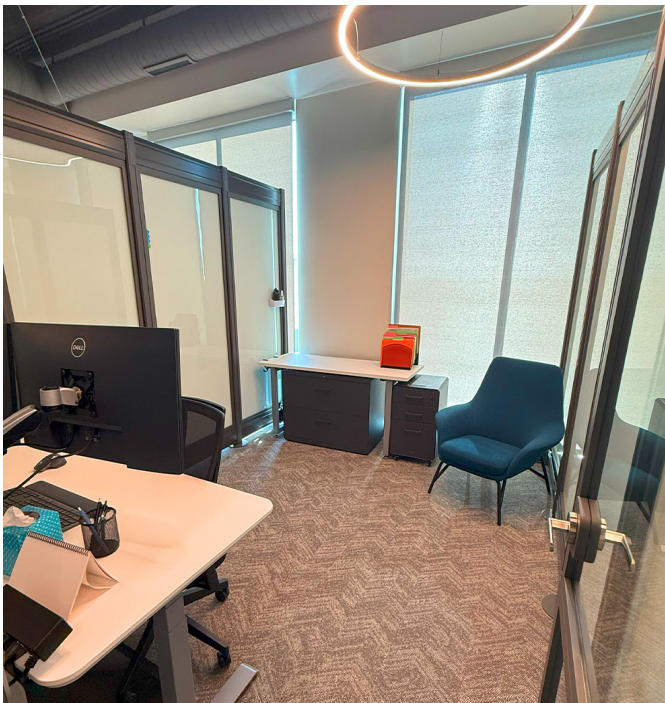
70+
restaurant
options
within 4 miles

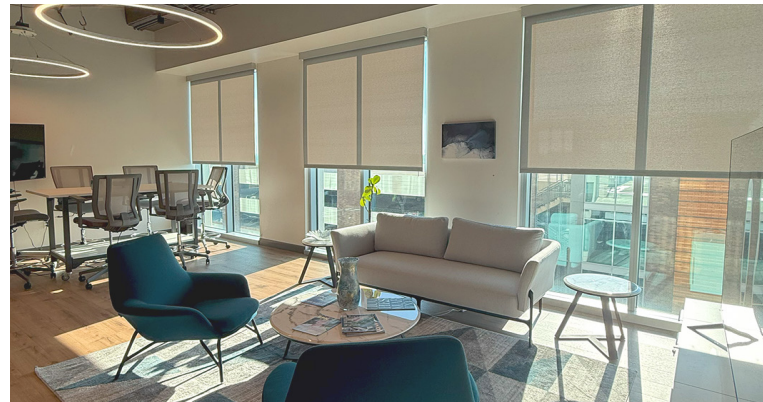
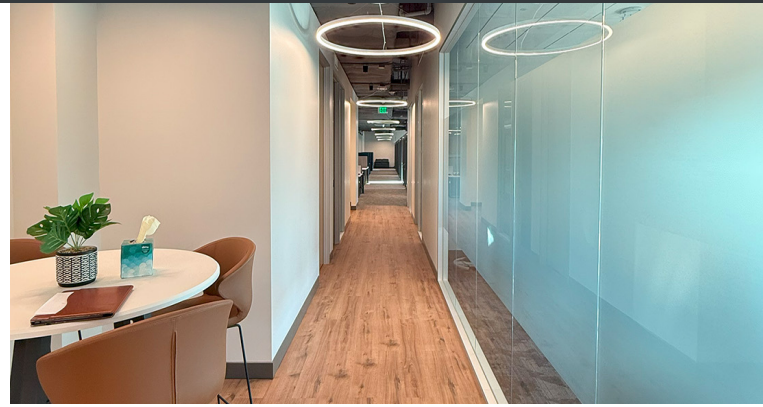
40+
retail
options
within 6 miles

15
lodge
options
within 4 miles

5
nature
trails
within 6 miles

SUITE 450 | 6,425 RSF





Get More Information

Daniel Rudd, Principal
214 629 7600
daniel.rudd@avisonyoung.com

Nathan Cobb, Occupier Solutions
214 973 3374
nathan.cobb@avisonyoung.com

**AVISON
YOUNG**

AvisonYoung.com