



# JAPAN CENTER EAST & WEST

SAN FRANCISCO | CALIFORNIA

HALEY KLEIN [haley@mavenproperties.com](mailto:haley@mavenproperties.com)  
KRYSTAL CHANNICK [krystal@mavenproperties.com](mailto:krystal@mavenproperties.com)

**maven**  
RETAIL



# JAPAN CENTER EAST & WEST

*San Francisco, CA*

**Japantown**, one of three remaining in the United States, consists of about six square city blocks in San Francisco. The main thoroughfare is Post Street, between Fillmore Street and Laguna Street.

Japan Center East & West are located in the heart of Japantown and include over 100,000 square feet of shops and restaurants.

Japan Center represents Japanese culture with one-of-a-kind retailers and restaurants and it can accommodate both large and small businesses, ranging in size from as little as 300 to as large as 15,000 square feet.

The Peace Plaza, which is situated between the East and West buildings, is a gathering place for locals and tourists, and a host for many festivals and community-oriented events. The largest event is the Cherry Blossom Festival which takes place each spring.

The property is easily accessible by public transportation, and also contains ample underground and street parking.





# JAPAN CENTER CO-TENANCY

With its famous communal tables, the chefs at **BENIHANA** perform the ancient art of Teppanyaki. Benihana San Francisco is one of 70 Benihana restaurants in the United States, Caribbean, and Central and South America.



**DAISO**, founded in 1977, has a range of over 100,000 products, of which over 40 percent are imported. Many of their products are unique house-hold items such as kitchenware and cleaning products.



**ANDERSEN BAKERY** carries a full range of baked products to complement a freshly baked bread program. The inspiration for making Danish pastries, and 'European style' bread, came from a study trip to Denmark in 1959, by Japanese founder Shunsuke Takaki.



**UJI TIME**, a treat shop known for its adorable fish-shaped cones stuffed with soft serve, has expanded to Japan Center. The famed taiyaki cone is a take on the traditional Japanese dessert in the shape of a fish, usually filled with red bean paste – but Uji Time takes it to another level by stuffing the cone with soft serve.



Since its inception in 1986, **Nijiya Market** has continued to offer a large variety of Japanese food products. Currently, Nijiya Market operates 12 stores in California and Hawaii, including the location in the Japan Center Mall.



**OMA** short for **OMAKASE**, is one of the newest Japan Center spots where the guests entrust the chef with the meal selection. As Japan Center's newest Michelin rated spot, Chef Wilson Chan takes pride in his use of the freshest ingredients, masterful techniques and bursts of innovation.



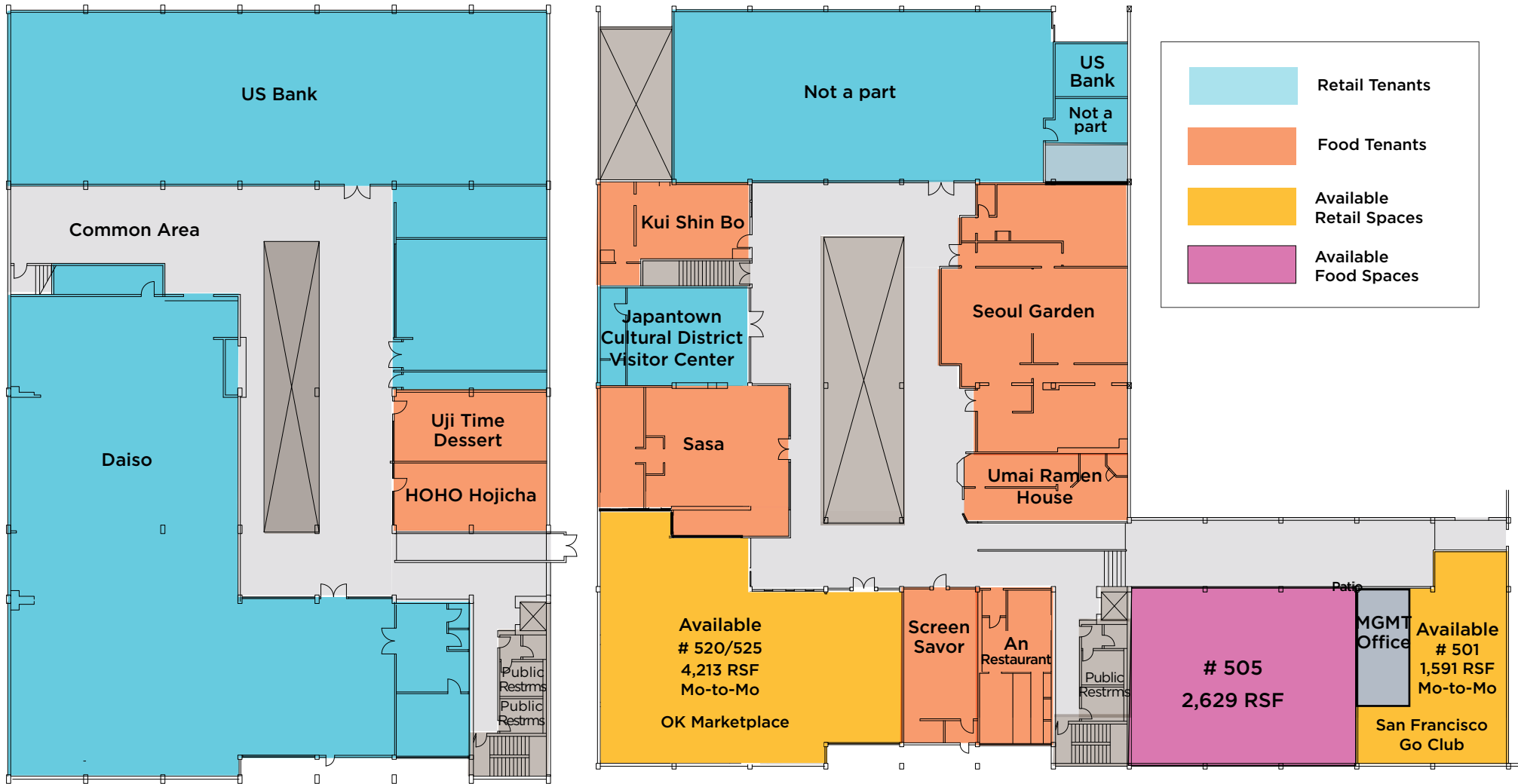
# JAPAN CENTER CO-TENANCY







# JAPAN CENTER EAST FLOOR PLAN | 22 PEACE PLAZA



## JAPAN CENTER EAST

### AVAILABLE RETAIL SPACES

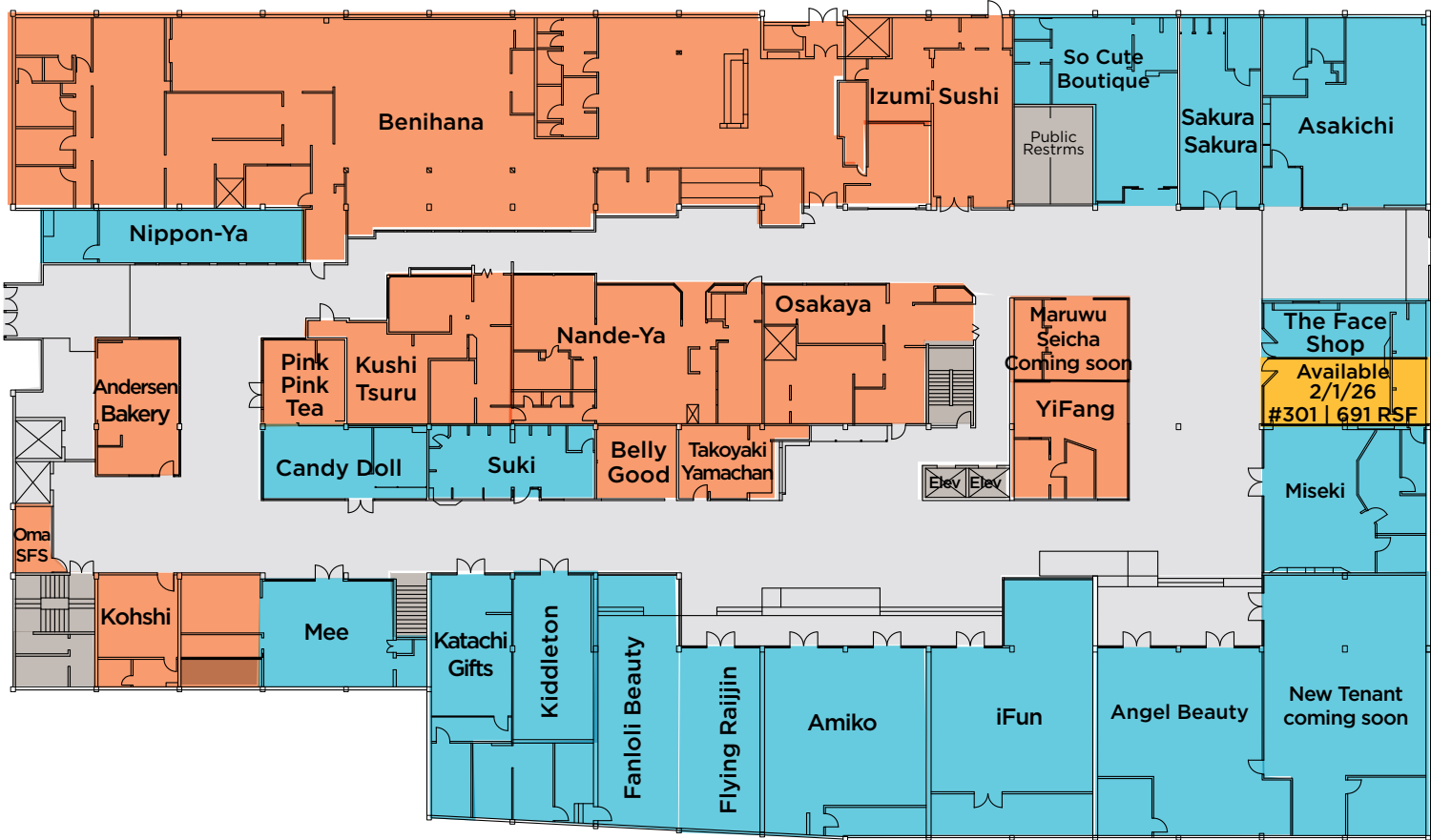
# 501 - 1,591 RSF  
# 520/520A/525 - 4,213 RSF


## JAPAN CENTER EAST


### AVAILABLE FOOD SPACES

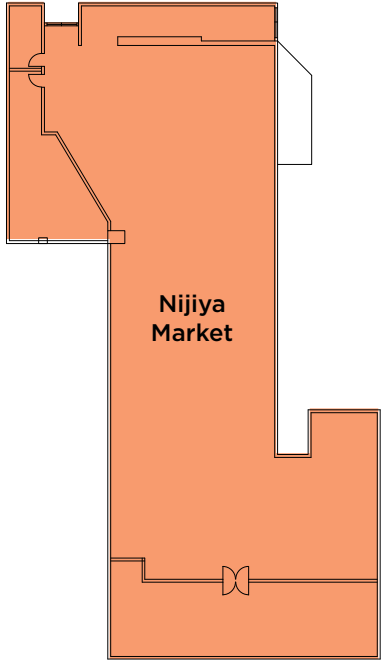
# 505 - 2,629 RSF

JAPAN CENTER WEST FLOOR PLAN | 1737 POST STREET



 Retail Tenants

 Food Tenants



**JAPAN CENTER WEST**

AVAILABLE SPACES RETAIL

# 301 - 691 RSF



SAN FRANCISCO BAY

MARINA

NORTH BEACH

GARDENIAS

PACIFIC HEIGHTS

JAPANTOWN NEIGHBORHOOD

GARDENIAS

OSAKA WAY

HOTEL KABUKI

AMC KABUKI

KINOKUNIYA BUILDING & WEBSTER BRIDGE

JAPAN CENTER WEST

POST STREET

GEARY BOULEVARD

KABUKI SPRINGS & SPA

THE PROGRESS

JANE THE BAKERY

THE FILLMORE

WISE SONS DELI

WELLS FARGO

PEACE PLAZA

JAPAN CENTER EAST

LAGUNA STREET

GEARY BOULEVARD

WEBSTER STREET

FILLMORE STREET

WALK SCORE

100  
WALK SCORE

95  
BIKE SCORE

79  
TRANSIT SCORE

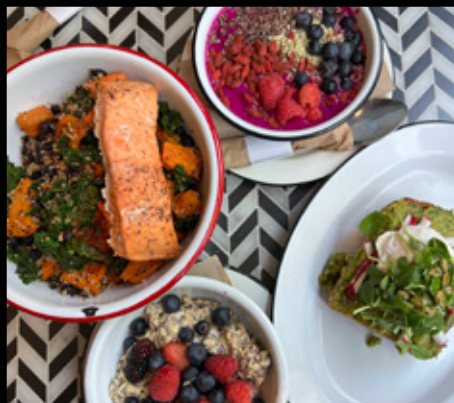
MUNI BUSES: N, S, J, M



## THE NEIGHBORHOOD



HED11



JANE ON FILLMORE



MATTINA



7 ADAMS



STATE BIRD PROVISIONS



BOOM BOOM ROOM



AMC KABUKI 8



COPRA



KABUKI HOTEL

## JAPANTOWN



SHEBA JAZZ LOUNGE



JANE THE BAKERY



THE FILLMORE



# JAPANTOWN PEACE PLAZA RENOVATION PROJECT

Japantown Peace Plaza is a major cultural landmark celebrating iconic structures like the historic Peace Pagoda monument. The outdoor plaza is over 30,000 square feet in area and built over a parking garage. Named the Peace Plaza Vision Plan, the renovation project will bring to life the vision proposed for

the central public space in San Francisco's Japantown. The plaza will be completed with new pavers, landscape planters and irrigation, decorative walls, curbs and railings, lighting and electrical systems. The Peace Plaza is expected to fully reopen by early 2026.





**“The Plaza is the beating heart of Japantown: attracting visitors, supporting businesses and sharing Japanese heritage, history and culture.”**

Speaker Emerita Nancy Pelosi





SAN FRANCISCO | CALIFORNIA

# JAPAN CENTER EAST & WEST

**maven**  
RETAIL

## CONTACT

**HALEY KLEIN**

office 415.404.7330  
haley@mavenproperties.com  
DRE #1907308

**KRYSTAL CHANNICK**

office 858.231.2219  
krystal@mavenproperties.com  
DRE #01969079

NOTICE: This information has been secured from sources we believe to be reliable but we make no representations, warranties, express or implied, as to the accuracy of the information. Listing broker has been given enough information to provide only a preliminary interest in the property. The materials are not to be considered fact. The information contained herein is not a substitute for thorough due diligence investigation. References to square footage, zoning, use, or age are approximate. Please contact the San Francisco Planning Department to verify zoning at (415) 558-6378, as neither broker or landlord represent that this space is suitable for your use. Tenant or Buyer must verify the information at their own expense and bears all the risk for any inaccuracies. By receiving these materials you are agreeing to the disclaimers set forth herein. DRE#01878802

466 Green Street Suite #203 | San Francisco, CA 94133 | 415.781.7700 | DRE #01878802