

For Sale in La Verne, CA 91759

2211 3RD ST

*±9,961 SF Religious Facility (2 buildings)
Situated on ±8,679 SF / 0.20 acres*



Exclusively listed by

ERIC KNOWLES

213.660.9337

eric.knowles@kidder.com

LIC N° 00944210

ROBERT FLETCHER

213.225.7246

robert.fletcher@kidder.com

LIC N° 01706060

RILEY ROHDE

858.369.3041

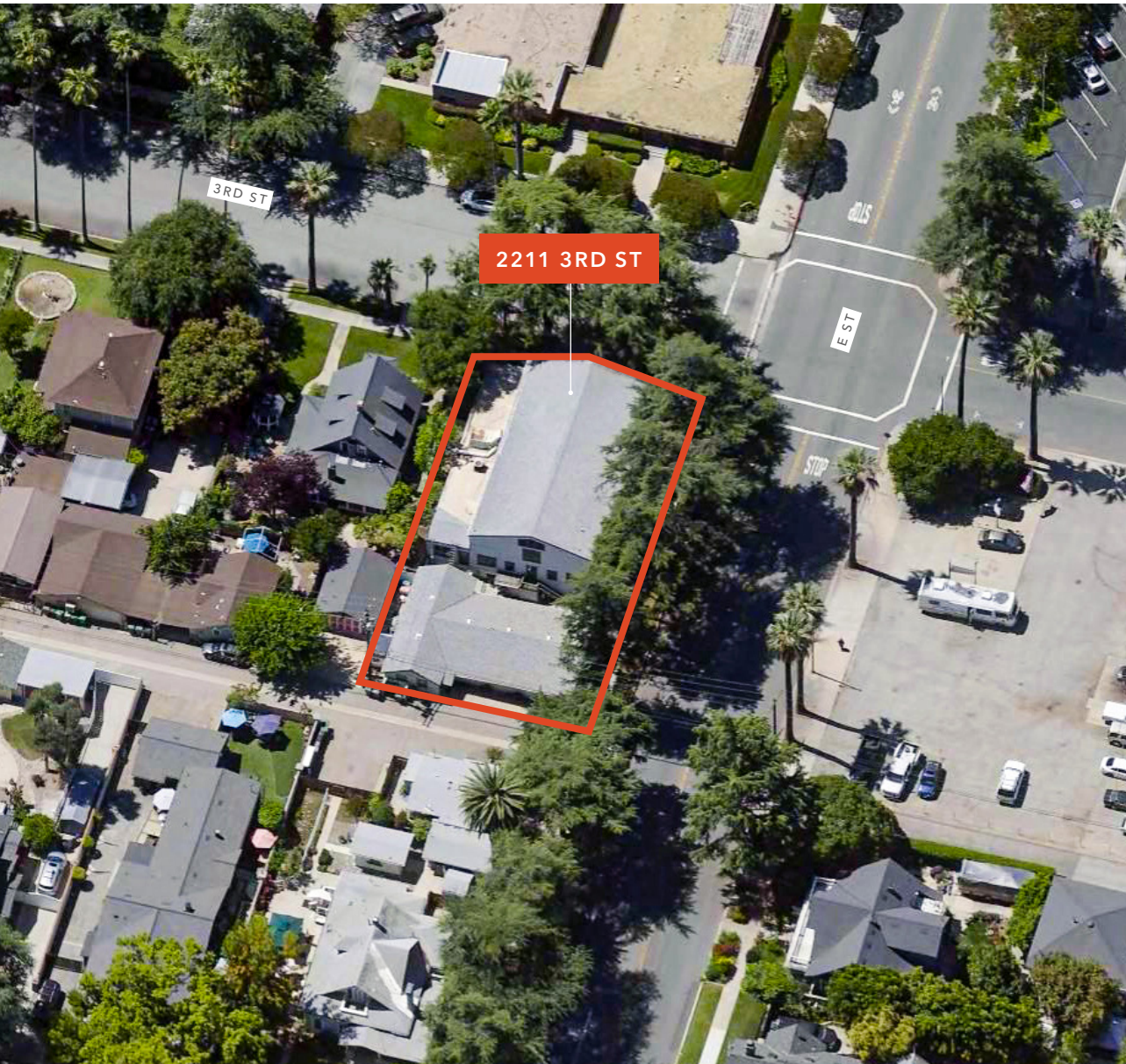
riley.rohde@kidder.com

LIC N° 02207141

KIDDER.COM

km Kidder Mathews

2211 3RD ST



Unique opportunity to acquire an existing, well-located religious facility conveniently situated between the I-210 and I-10 near Arrow Hwy

| | |
|----------------------------|---|
| TOTAL BUILDING SF | ±9,961 SF |
| GROSS LAND SF | ±8,679 SF |
| OFFICE / ADMIN BUILDING SF | ±1,879 SF |
| SANCTUARY BUILDING | ±8,064 SF |
| MAIN SANCTUARY | ±275 people |
| FELLOWSHIP HALL | Kitchen, classrooms, offices, and storage spaces |
| ZONING | Lordsburg Specific Plan (LSP) |
| LOCATION | One block from Old Town Square in La Verne, just north of Arrow Hwy |
| APN | 8377-009-013 |
| SALE PRICE | \$4,100,000 |

AVAILABLE FOR SALE

KIDDER MATHEWS



2211 3RD ST



AVAILABLE FOR SALE



KIDDER MATHEWS

2211 3RD ST



Exclusively listed by

ERIC KNOWLES
213.660.9337
eric.knowles@kidder.com
LIC N° 00944210

ROBERT FLETCHER
213.225.7246
robert.fletcher@kidder.com
LIC N° 01706060

RILEY ROHDE
858.369.3041
riley.rohde@kidder.com
LIC N° 02207141

KIDDER.COM

This information supplied herein is from sources we deem reliable. It is provided without any representation, warranty, or guarantee, expressed or implied as to its accuracy. Prospective Buyer or Tenant should conduct an independent investigation and verification of all matters deemed to be material, including, but not limited to, statements of income and expenses. Consult your attorney, accountant, or other professional advisor.

km Kidder
Mathews