

//RETAIL/MULTIFAMILY FOR SALE



PROPERTY DESCRIPTION

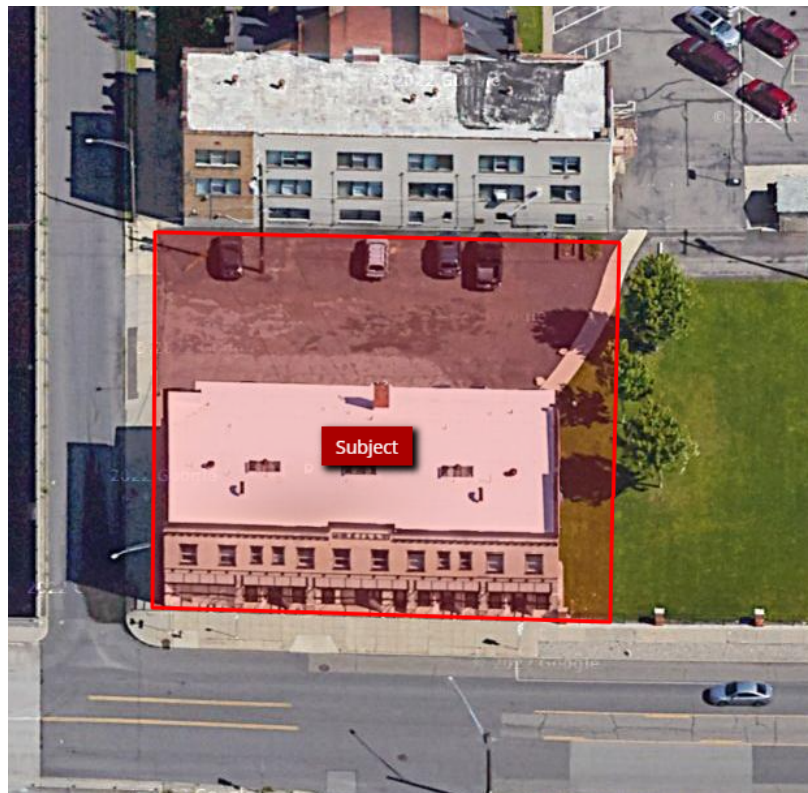
The property offers 8 1bed/1bath units over retail/office space and is located on the Northeast corner of Broadway and N Maple St. The building can be seen from Maple St and offers a good amount of visibility. The property is within close proximity to Kendall Yards, the Courthouse, Downtown Spokane, Riverpark Square, and the Spokane Arena.

PROPERTY FEATURES

- Property Type: Mixed-Use Retail/Office/Multifamily
- Seller Financing is Available
- Building SF: 15,000 SF
- Parcel Size: .32 Acres
- Occupancy: Owner occupies the units upstairs and the main floor space
- APN#: 25131.4510
- Zoning: CC1
- Built: 1901
- Number of Floors: 3
 - Basement: Dirt and Concrete Floor
 - First Floor: Retail/Office Space
 - Second Floor: 8 1bed/1bath units

PRICE: \$1.5 MILLION

[View Drone Footage](#)



// PRESENTED BY:

RYAN OBERG

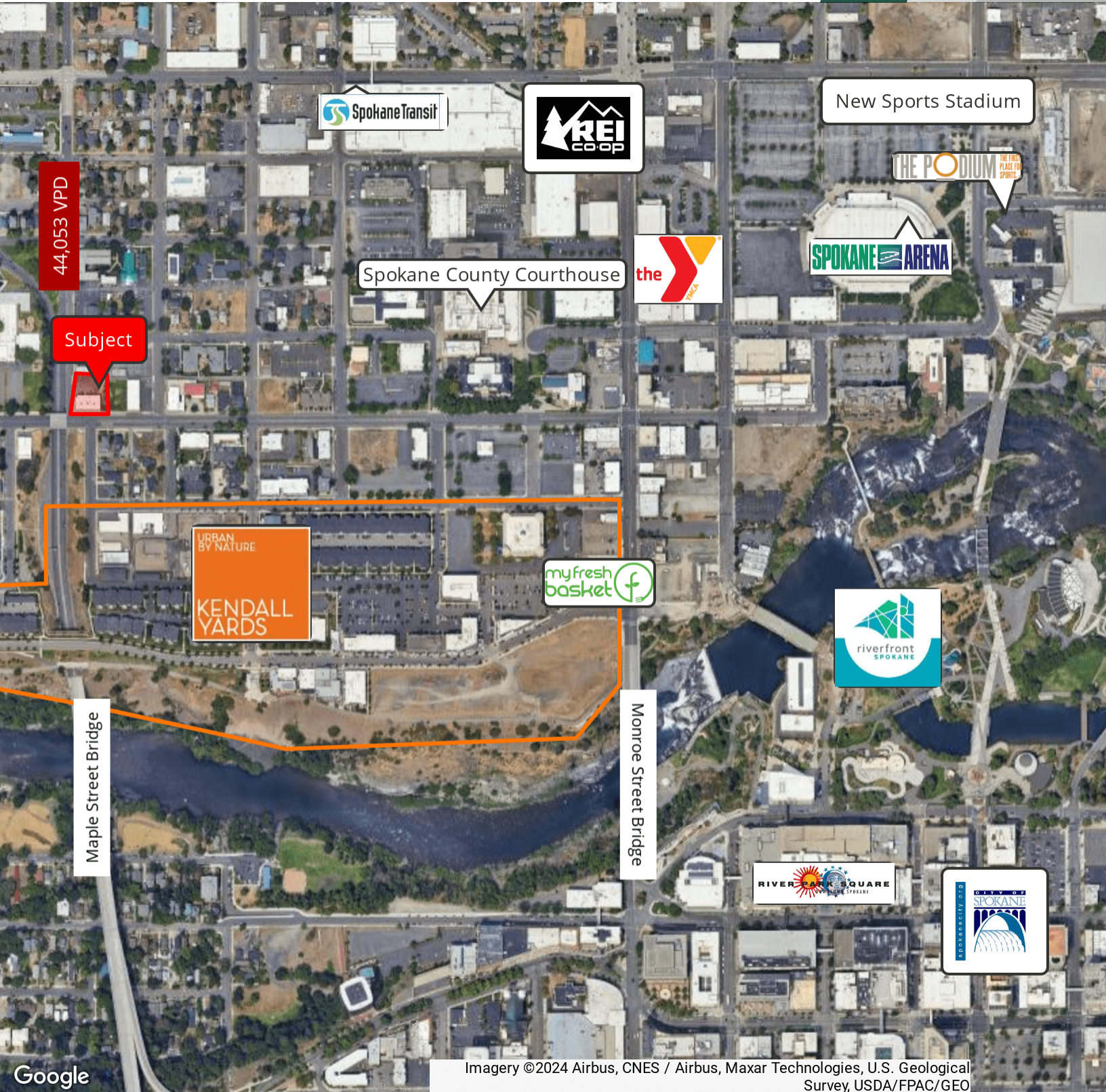
COMMERCIAL LEASING & SALES BROKER

509.990.8423

RYAN.OBERG@G-B.COM



// RETAILER MAP



Google

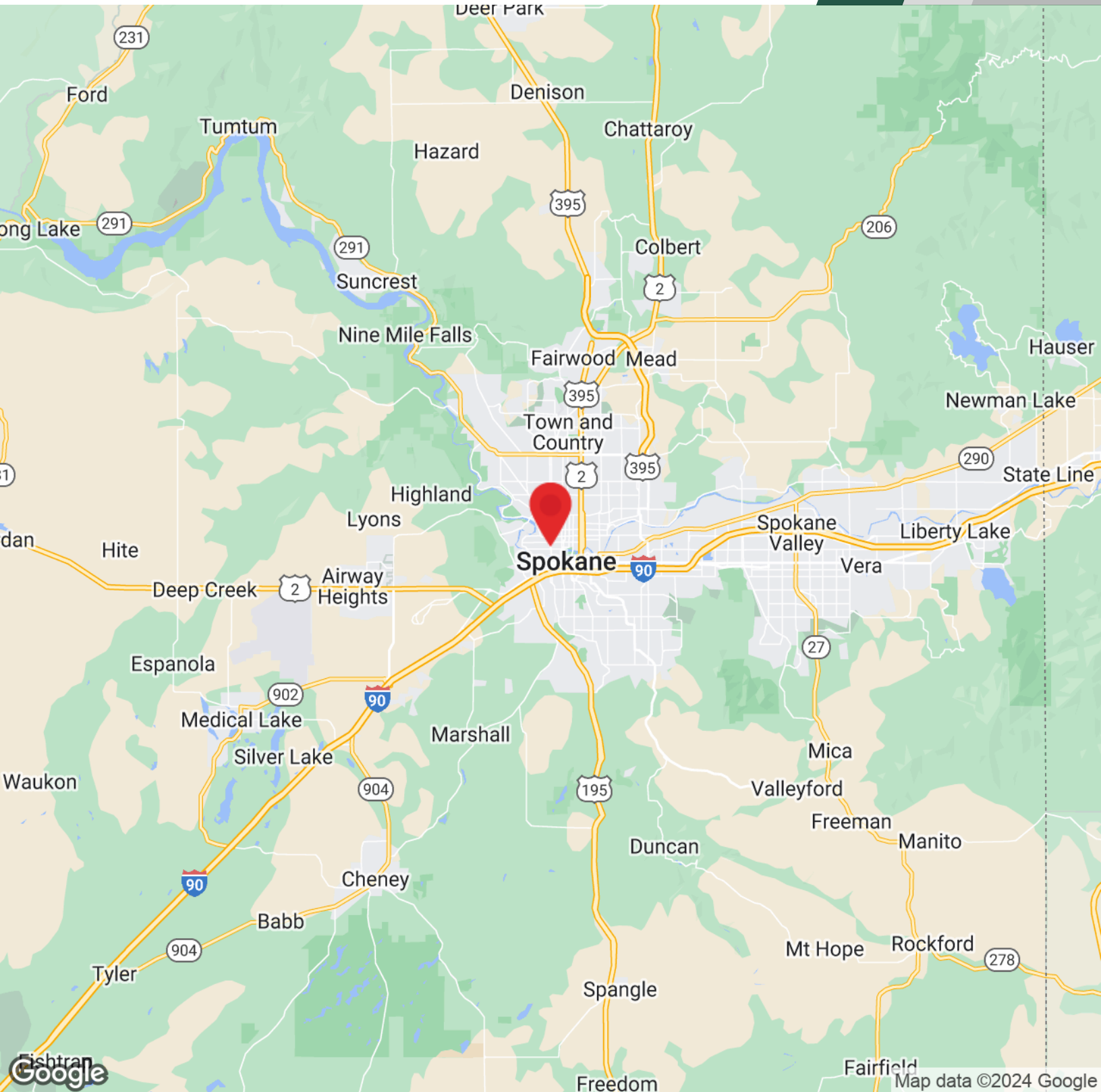
Imagery ©2024 Airbus, CNES / Airbus, Maxar Technologies, U.S. Geological Survey, USDA/FPAC/GEO

// PRESENTED BY:

RYAN OBERG
COMMERCIAL LEASING & SALES BROKER
509.990.8423
RYAN.OBERG@G-B.COM



// LOCATION MAP

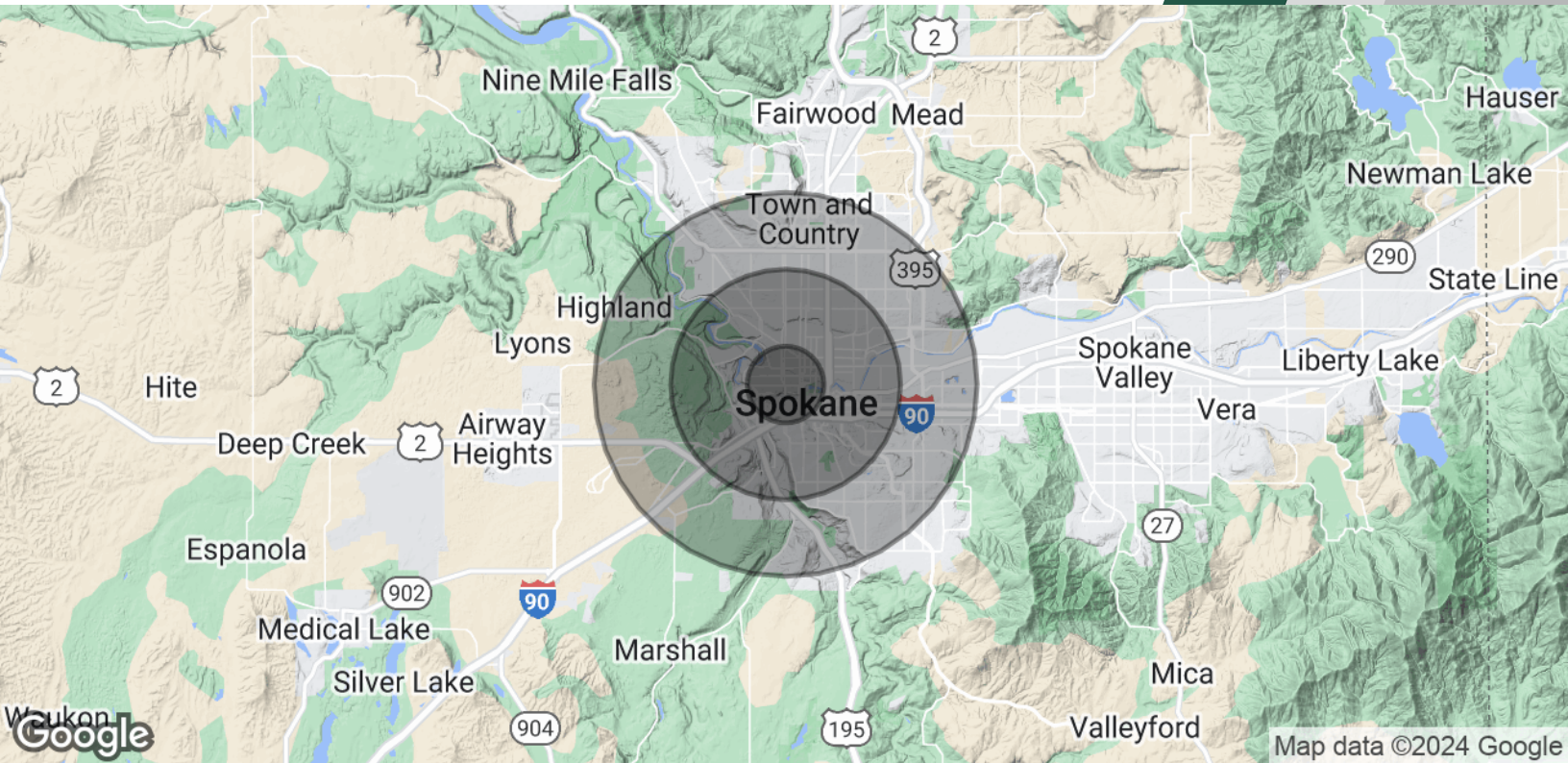


// PRESENTED BY:

RYAN OBERG
COMMERCIAL LEASING & SALES BROKER
509.990.8423
RYAN.OBERG@G-B.COM



// DEMOGRAPHICS MAP & REPORT



POPULATION	1 MILE	3 MILES	5 MILES
Total Population	14,803	101,440	212,658
Average Age	39.9	37.0	38.0
Average Age (Male)	39.0	36.4	36.9
Average Age (Female)	40.3	37.8	39.2
HOUSEHOLDS & INCOME	1 MILE	3 MILES	5 MILES
Total Households	8,945	47,763	96,564
# of Persons per HH	1.7	2.1	2.2
Average HH Income	\$43,220	\$60,871	\$65,732
Average House Value	\$147,769	\$188,630	\$202,250

* Demographic data derived from 2020 ACS - US Census

// PRESENTED BY:

RYAN OBERG
 COMMERCIAL LEASING & SALES BROKER
 509.990.8423
 RYAN.OBERG@G-B.COM

