

# 9400 PLACE

9340 - 9400 SW Beaverton Hillsdale Hwy | Beaverton, OR 97005

## FOR LEASE



## OFFICE SPACE AVAILABLE FOR LEASE

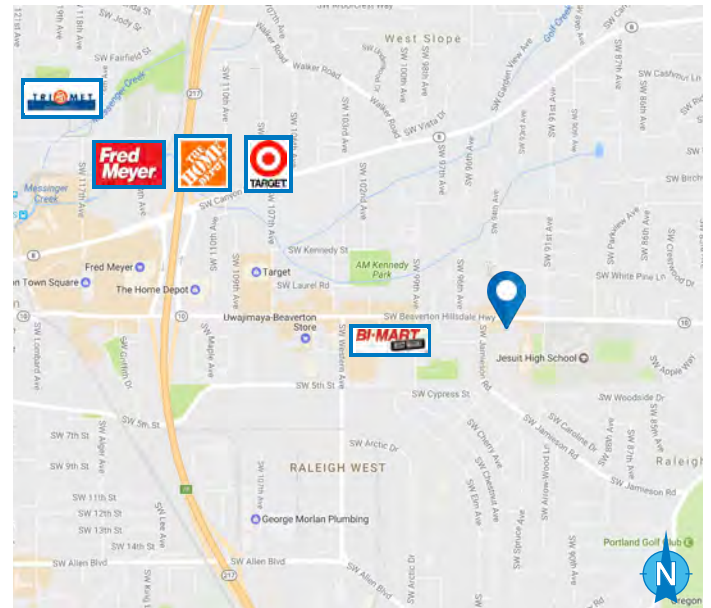
**BUILDING 9400 - \$21 PSF, FS**

### THIRD FLOOR

- **FULL FLOOR HEADQUARTERS SUITE - 35,067 RSF**

### FEATURES

- Bright, natural light with offices along window line
- Courtyard setting; elevator served
- Professionally managed
- Ample parking with 3.5/1000 ratio
- Along SW Beaverton Hillsdale Highway
- Adjacent to Jesuit High School
- Walk to amenities; close to Beaverton Town Square
- Easy access to 217
- Safe, secure building with 24/7 tenant access
- Washington County taxes



11.18.2025

For more information or a property tour, please contact:

**DUANE LINK**

503.225.8465

Duanel@norris-stevens.com

## Norris & Stevens

INVESTMENT REAL ESTATE SERVICES



Information contained herein has been obtained from others and considered to be reliable; however, a prospective purchaser or lessee is expected to verify all information to their own satisfaction.

900 SW 5th Avenue • 17th Floor • Portland, OR 97204  
503.223.3171 • norris-stevens.com

# 9400 PLACE

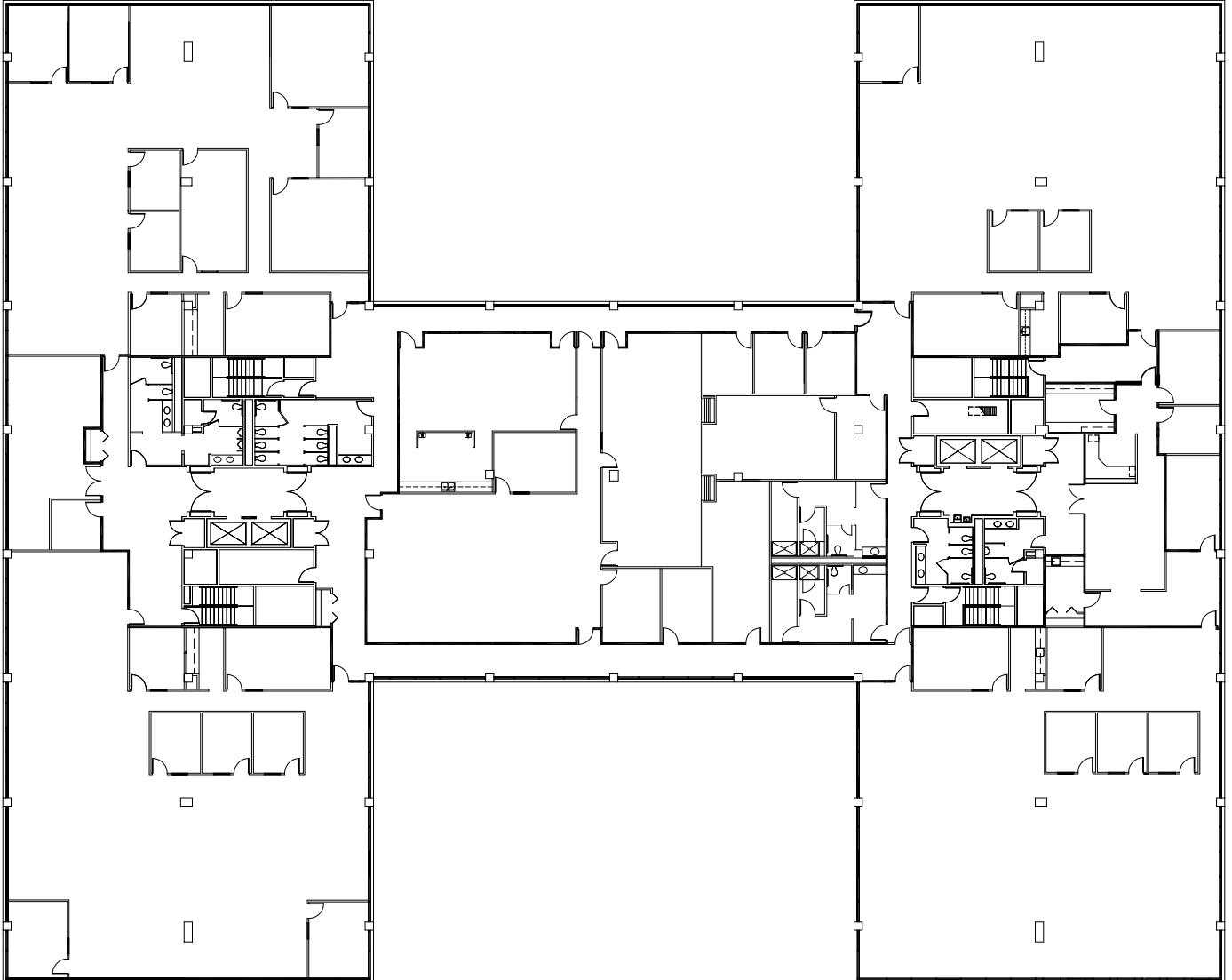
9340 - 9400 SW Beaverton Hillsdale Hwy | Beaverton, OR 97005

## FOR LEASE

### FLOOR PLANS

#### BUILDING 9400 THIRD FLOOR

**FULL FLOOR HEADQUARTERS SUITE AVAILABLE - 35,067 RSF**



For more information or a property tour, please contact:

**DUANE LINK**

503.225.8465

Duanel@norris-stevens.com

## Norris & Stevens

INVESTMENT REAL ESTATE SERVICES

TCN  
WORLDWIDE  
REAL ESTATE SERVICES

AMO

Information contained herein has been obtained from others and considered to be reliable; however, a prospective purchaser or lessee is expected to verify all information to their own satisfaction.

900 SW 5th Avenue • 17th Floor • Portland, OR 97204  
503.223.3171 • [norris-stevens.com](http://norris-stevens.com)