



Industrial Space For Lease/ Sale

400 Mound City Rd West Memphis, Arkansas 72301

Property Highlights

- Prime location Only 0.7 miles from the I-40 on ramp and 2.3 miles from the I-55 on ramp.
- Partial Occupancy: A single tenant currently occupies 11,000 SF, 6.58 acres and 8 loading docks with lease expiring February 28, 2032.
- Property ideal for industrial / manufacturing
- 24,109 SF Building
- 9 Drive Through Bays
- Clear Height: 18 ft.
- Small office
- Acreage: 1.6 AC
- Lease rate: \$6.00/SF/YR



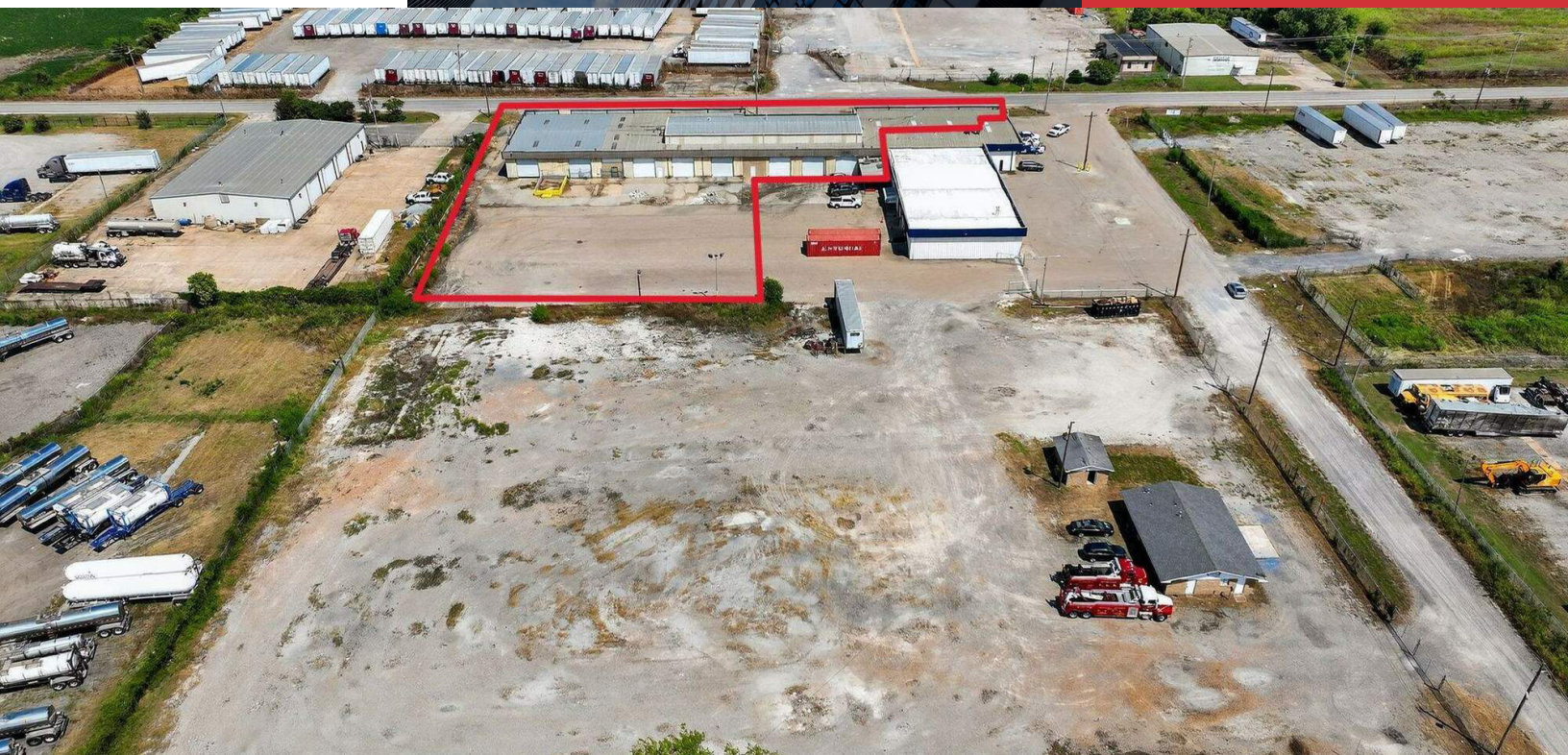
For More Information



Van Spear

Senior Vice President
O: 870 735 6221
vspear@saigcompany.com

400 Mound City Rd, West Memphis, AR 72301



400 Mound City Rd, West Memphis, AR 72301

We obtained the information above from sources we believe to be reliable. However, we have not verified its accuracy and make no guarantee, warranty or representation about it. It is submitted subject to the possibility of errors, omissions, change of price, rental or other conditions, prior sale, lease or financing, or withdrawal without notice. We include projections, opinions, assumptions or estimates for example only, and they may not represent current or future performance of the property. You and your tax and legal advisors should conduct your own investigation of the property and transaction.

For Lease/Sale

24,109 SF
Industrial Space



400 Mound City Rd, West Memphis, AR 72301

We obtained the information above from sources we believe to be reliable. However, we have not verified its accuracy and make no guarantee, warranty or representation about it. It is submitted subject to the possibility of errors, omissions, change of price, rental or other conditions, prior sale, lease or financing, or withdrawal without notice. We include projections, opinions, assumptions or estimates for example only, and they may not represent current or future performance of the property. You and your tax and legal advisors should conduct your own investigation of the property and transaction.

400 Mound City Road West Memphis, AR

Write a description for your map.



400 Mound City Rd, West Memphis, AR 72301

We obtained the information above from sources we believe to be reliable. However, we have not verified its accuracy and make no guarantee, warranty or representation about it. It is submitted subject to the possibility of errors, omissions, change of price, rental or other conditions, prior sale, lease or financing, or withdrawal without notice. We include projections, opinions, assumptions or estimates for example only, and they may not represent current or future performance of the property. You and your tax and legal advisors should conduct your own investigation of the property and transaction.